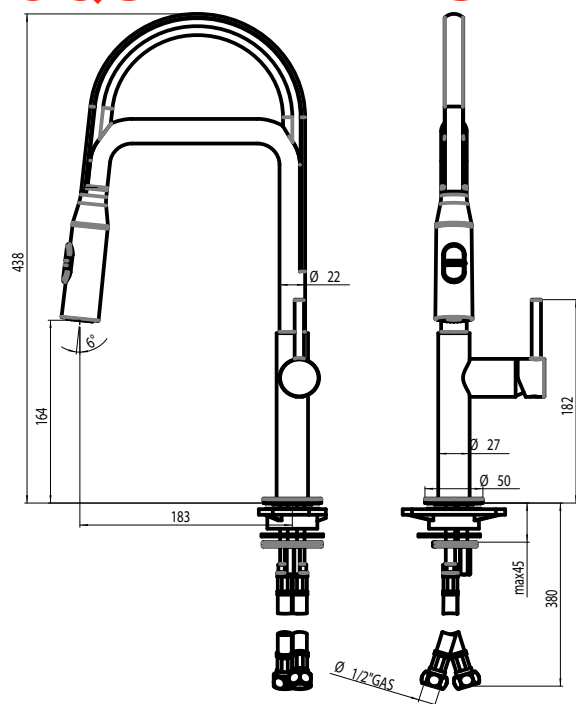


# TEKNOBILI

## ACQUERELLI PULL OUT SINK MIXER



### SPECIFICATIONS

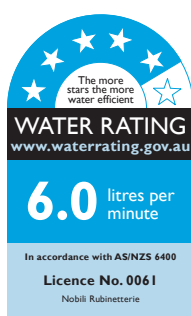
<b>Recommended use</b>	Domestic, hotel and commercial
<b>Colour availability</b>	Chrome White flexible hose
<b>Pressure rating</b>	Maximum continuous operating pressure 1000 kpa. Note: For best performance and longer life we recommend 150-500 kPa.
<b>Temperature rating</b>	Maximum continuous working temperature 80°
<b>Suitable Hot Water Units</b>	Storage tank: Yes Continuous Flow: Yes Gravity Feed: Not recommended
<b>WELS</b>	Stars: 5 Flow rate: 6 L/Min
<b>Spray</b>	Normal and veggie
<b>Standards</b>	AS/NZS 3718



To see the complete Teknobili range go to [www.reece.com.au/bathrooms](http://www.reece.com.au/bathrooms)

### CLEANING RECOMMENDATIONS

This kitchen product should not be cleaned with abrasive materials. Damage caused by any improper treatment is not covered by the product warranty - refer to Warranty Conditions on the last page.



**Disclaimer:** Products in this specification manual must by regulation be installed by licensed and registered trade people. The manufacturer/distributor reserves the right to vary specifications or delete models from their range without prior notification. Dimensions are nominal measurements only. Dimensions and set-outs listed are correct at time of publication however the manufacturer/distributor takes no responsibility for printing errors.

Tech Page Version 1

# TEKNOBILI

## ACQUERELLI PULL OUT SINK MIXER

### INSTALLATION INSTRUCTIONS

#### Note

The installation must comply with requirements of AS/NZS 3500. Mixer must be installed by a qualified plumber.

#### Important

Your mixer comes to you already factory assembled and tested. We do not recommend the dismantling of any internal part of the mixer. The mixers are factory tested and sealed so as to give the best performance.

1. Please flush out pipe work prior to connecting the new mixer.
2. All mixers should be installed with isolating stop cocks. Arco brand recommended.
3. This mixer is suitable for high pressure applications where both hot and cold water supply pressures are at 150kPa or above. Equal pressure for hot and cold water supply is required for this mixer.
4. Fit fixing rods (37) into mixer body (13).
5. Place the rubber gasket (33) and dress ring (32) into

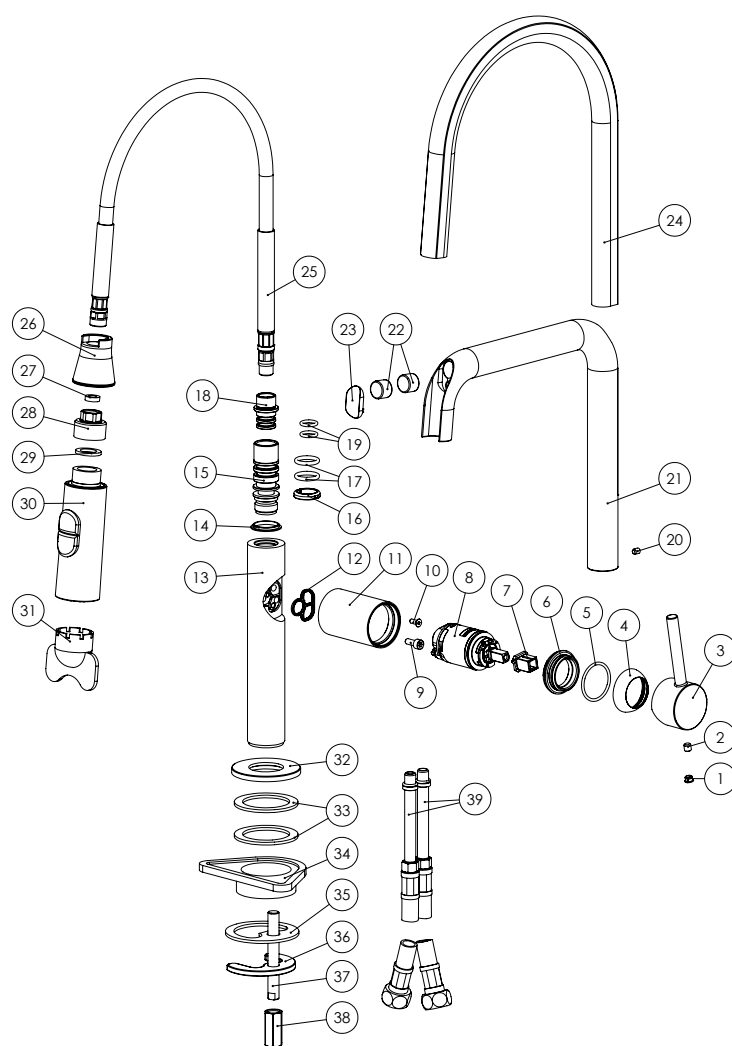
position.

6. Place the mixer body (13) into the sink hole making sure first that the flexible hoses (39) are firmly tightened into the base of the mixer body.
7. Do not use Teflon tap on threads.
8. From underneath, apply rubber gasket (33), stabilizing plate (34), plate seal (35) and horse shoe plate (36).
9. Lock the mixer onto the sink by tightening the hex nut (38).

### SERVICING - REPLACEMENT OF CARTRIDGE

1. Lift chrome cover (1) and unscrew the grub screw (2) using allen key.
2. Remove sink mixer handle (3), cartridge dome (4) and unscrew the cartridge lock nut (6).
3. Pull out cartridge (8) and replace with new, making sure the cartridge sit properly into the mixer body. Replace the lock nut (6), cartridge dome (4) and sink mixer handle (3).
4. Tighten grub screw (2) and push in chrome cover (1).

### EXPLODED VIEW



Item	Description	Part No.
1.	Chrome Cover	
2.	Grub Screw	
3.	Mixer Handle	
4.	Cartridge dome	
5.	O-Ring	
6.	Cartridge Lock Nut	
7.	Thermal Barrier	
8.	Cartridge	
9.	10mm Screw	
10.	8mm Screw	
11.	Cartridge Sleeve	
12.	Cartridge Sealing Gasket	
13.	Body	
14.	Mounting Plate	
15.	Outlet Connection Assembly	
16.	Lock Nut	
17.	Outlet O-Ring	
18.	Hose Connector Assembly	
19.	O-Rings	
20.	Grub Screw	
21.	Hose Guide Support Arm	
22.	Magnet	
23.	Cap for Support Arm	
24.	White Flexible Hose	
25.	Hose	
26.	Hand Piece Connector	
27.	Gasket	
28.	Hose Swivel Connector	
29.	Rubber Gasket	
30.	Pull Down Handpiece	
31.	Aerator key	
32.	Dress ring	
33.	Rubber Gasket	
34.	Stabalising plate	
35.	Plate Seal	
36.	Horse shoe plate	
37.	Fixing rod	
38.	Hex nut	
39.	Flexible hoses	

Plumbers, please ensure a copy of the installation instructions is left with the end user for future reference

# TEKNOBILI

## ACQUERELLI PULL OUT SINK MIXER



### REECE PRODUCT QUALITY GUARANTEE

You have purchased a quality product from Reece Pty Ltd ABN 84 004 097 090 ("Reece"). This product is covered by a 15 year replacement product warranty and a 12 month warranty over spare parts and labour.

#### 15 YEAR WARRANTY – DOMESTIC USE

This warranty covers faults in the product construction, material and assembly. Products which are within 15 years from the date of purchase, found upon inspection by an authorised Reece representative, to be defective in construction, material or assembly, will be repaired or exchanged with an equivalent product free of charge. Replaced items become Reece's property. This warranty also covers any spare parts included under "Manufacturer's Provisions" below.

All replacement products will be available for collection without charge to the customer at the nearest Reece branch to the customer's location, or elsewhere as agreed between the customer and Reece.

#### Manufacturer's Provisions

The following spare parts are covered by the full 15 year warranty of the product:

- Mixer Cartridge

#### Labour and Spare Parts

The labour for the replacement of products and spare parts to which this warranty applies will be supplied by Reece or relevant supplier using licensed plumbers engaged by Reece or relevant supplier within 1 year from the date of purchase.

Spare parts other than those listed in the Manufacturer's Provisions above, which are within 1 year from the date of purchase found upon inspection by an authorised Reece representative to be defective in construction, material or assembly, will be replaced free of charge.

#### Warranty Conditions

This warranty will apply only under all of the following conditions:

- The item has been installed by a licensed plumber
- The item has been installed for and subjected to domestic residential use only
- Failure is due to a fault in the manufacture of the product
- Proof of purchase (including the date of purchase) is provided
- The installation of the product is in accordance with the instructions provided

This warranty does not cover products purchased as an ex-display without being fully checked and tested for sale by the manufacturer.

This warranty does not include faults caused by:

- Unsuitable or improper use
- Incorrect installation or installation not in accordance with the instructions provided
- Installation or part installation by the purchaser or any person other than a LICENSED PLUMBER
- Normal wear and tear
- Inadequate or complete lack of maintenance
- Chemical, electrochemical or electrical influences
- Harsh detergents or abrasive cleaners used on product finishes

#### 1 YEAR WARRANTY – COMMERCIAL USE

'Commercial' use is all use other than for normal domestic residential purposes, including use in non-business places as in public buildings, schools, sports centres and in establishments that contain private bathrooms with high frequency of use by many individuals, such as hotels, motels, retirement villages and hospitals.

The Commercial warranty covers this product against manufacturing faults in the construction, material and assembly of both the finished products and any spare parts for a period of 1 year from the date of purchase. Products and spare parts which are found upon inspection by an authorised Reece representative to be defective in construction, material or assembly will be repaired or exchanged free of charge. Replaced items become Reece's property. The labour for the replacement of products and spare parts to which this warranty applies will be supplied by Reece or relevant supplier using licensed plumbers engaged by Reece or relevant supplier. The Warranty Conditions and exclusions which apply to the domestic use warranty also apply to this commercial warranty.

#### EXCLUSIONS

To the fullest extent permitted by law, Reece excludes all liability for damage or injury to any person, damage to any property, and any indirect consequential or other loss or damage.

#### CLAIM PROCEDURE

For all warranty queries customers are to contact the branch where the product was purchased. These details can be found on your purchase invoice.

Our goods come with guarantees that cannot be excluded under the Australian Consumer Law. You are entitled to a replacement or refund for a major failure and for compensation for any other reasonably foreseeable loss or damage. You are also entitled to have the goods repaired or replaced if the goods fail to be of acceptable quality and the failure does not amount to a major failure.

**Don't risk it, use a licensed plumber.™**