

Nobili Oz T7 Pull Down Spray Sink Mixer Chrome (4 Star)

Note

Mixer must be installed by a qualified plumber.

Important

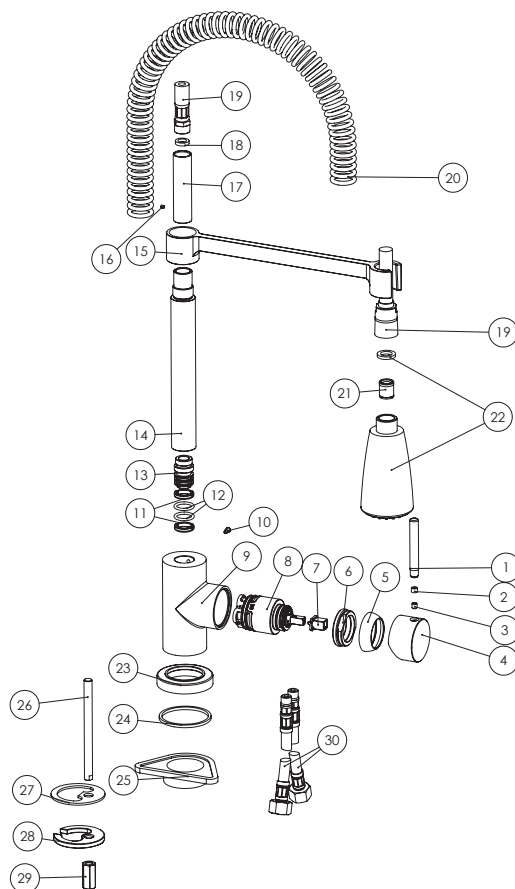
Your mixer comes to you already factory assembled and tested. We do not recommend the dismantling of any internal part of the mixer. The mixers are factory tested and sealed so as to give the best performance.

1. Please flush out new pipe work prior to connecting the new mixer.
2. All mixers should be installed with isolating stop cocks (Arco brand recommended).
3. In some areas where the incoming water exceeds 500kpa, an approved pressure limiting device must be installed. Equal pressure for hot and cold water supply is required for this single lever mixer.
4. Mixers are recommended for use on mains pressure and instantaneous systems only.

5. Place the base washer into position (24).
6. Fit the mixer body (9) into the sink hole making sure first that the flexible tails of flexible (30) are firmly tightened into base of the body.
7. Do not use Teflon tape on threads.
8. From underneath apply the fixing plate (25) prior to positioning the under bench washer (27), horse shoe plate (28) and hex nut (29).
9. Lock the mixer onto the sink by tightening the hex nut (29).
10. Connect the flexible hoses to the hot and cold isolating stops, hand tighten plus half a turn of the nut to provide a watertight joint. Ensure that the hoses are not under tension, twisted or kinked and if bent have a minimum radius of 30mm.

SERVICING - Replacement of Cartridge

1. Remove handle lever (1) and remove silicone washer (2), unscrew the grub screw (3).
2. Remove handle body (4) and dome (5), unscrew locking nut (6).
3. Lift out cartridge (8) and replace with new, making sure the two lugs on bottom of the cartridge sit properly into the allocated holes at the base of the mixer body (9).



Exploded View

Item Description	Spare Part Code
1 Lever	9501105
2 Silicone washer	
3 Grub screw	
4 Handle body	
5 Dome	
6 Locking nut	
7 Insert	
8 Cartridge	9501106
9 Mixer body	
10 Outlet locking screw	
11-13 Outlet fixing assembly	
14 Outlet riser	
15 Arm	
16 Grub screw	
17 Short outlet riser	
18 Washer	
19 Nylon hose	
20 Flexible coil	
21 Double check valve	
22 Handpiece	192251
23 Dress ring	
24 Base washer	
25 Fixing plate	
26 Fixing rod	
27 Under bench washer	
28 Horse shoe plate	
29 Hex nut	
30 Hot water flexible tail	192034
Cold water flexible tail	192035

Plumbers, please ensure a copy of the installation instructions is left with the end user for future reference.