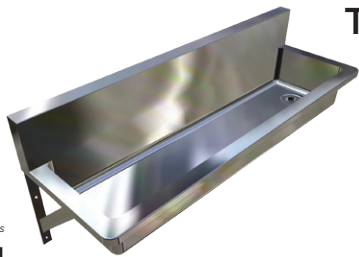


# PWD Wall Mounted Trough



## TPWD

Scan QR code  
to view our  
installation notes



### Product Info:

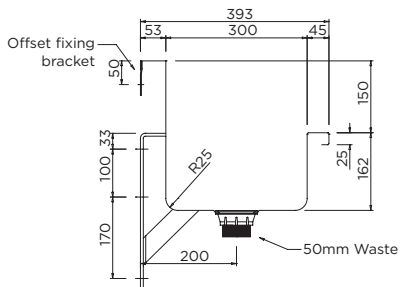
- Rear hob for concealing tapware connections
- Radius external and internal trough corners
- Versatile design suited to drinking or hand washing
- Wall brackets and 50mm waste supplied
- Available with tapware (see Tapware section)
- Available in standard and custom lengths

### To order this item please advise:

- Tap quantity and code (if required)
- Trough length
- Waste position – Left or Right

### Suggested Mounting Heights (mm)

	infant	primary	secondary
wash	550	650	700
drink	550	700	900



## INSTALLATION NOTES

- 1) Fixture strength is ultimately determined by the load capacity of the supporting structure (noggins recommended for stud wall construction) and use of appropriate fixings (i.e. sleeve anchors for masonry walls).
- 2) Trough is mounted to wall via two end brackets (inserted into end fascias of trough) and an offset bracket positioned at the rear of the splashback.
- 3) An additional centre bracket that supports the underside of the fixture is supplied for troughs over 2000mm.
- 4) Front support legs supplied only by specific request.
- 5) Troughs can be supplied with multiple tap styles where required.
- 6) Tapware connections should be housed within the 50mm cavity in the trough splashback.

## Suggested Tapware:

(see Tapware Section: 11 for complete range of options)



**TW-9104**  
Timed Flow Bib Tap



**TW-9203**  
Deluxe Timed Flow Bib Tap



**TW-0007**  
Top Activated Timed Flow Bib Tap



**TW-SET-01**  
Wall Mounted Tap Set



**TW-0048**  
Top Lever Timed Flow Bib Tap



**TW-9106**  
Front Lever Timed Flow Bib Tap

