



WOLFEN™

# INSTALLATION MANUAL

---

9509294 Wolfen 800 Back to Wall Rimless Pan Single Flap with Backrest  
White (4\*)

---

9509296 Wolfen 800 Back to Wall Rimless Pan Single Flap with Backrest  
Grey (4\*)

---

9509298 Wolfen 800 Back to Wall Rimless Pan Single Flap with Backrest  
Blue (4\*)

---





# WOLFEN™

## CONTENTS

Intro	02
Technical Information	03
Installation Instructions	04 - 07
Cleaning	09
Warranty	10

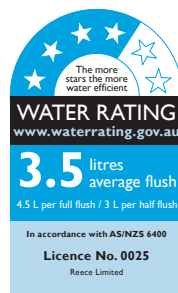
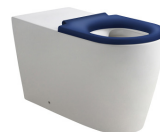
## Delivering unrivalled quality

Designed for absolute performance, Wolfen's 800 Closed Coupled Back to Wall Pan sets new standards in quality, hygiene and flushing performance. A Rimless, raised height design combined with precision engineering and extended footprint ensures suitability for care and ambulant environments.

Available in blue, grey and white single flap seats, raised height buttons and fixed arm back-rest to meet the requirements of AS1428.

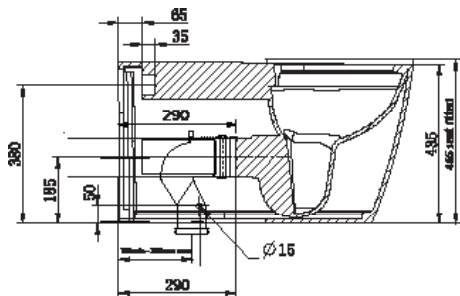
# TECHNICAL INFORMATION

Model	Wolfen 800 Back to Wall Pan with Single Flap Seat (4*)
Product Code	9509293   9509295   9509297
Material	Pan - Vitreous China Cistern - Vitreous China Seat - Urea
Colour	Pan - White Seat - White
Weight	Pan 50kg Seat 1.1kg
Water Inlet Position	Back Inlet
Toilet Seat	Single Flap Seat
Rim Configuration	Rimless
Set Out (mm)	185 min - 285 max
Inlet Valve Pressure	500 kPa
Spare Parts	9508007 Wolfen Single Flap Toilet Seat White 9508008 Wolfen Single Flap Toilet Seat Blue 9508009 Wolfen Single Flap Toilet Seat Grey
	9508717 Wolfen Seat Buffers (Sideways)
	9508718 Wolfen Fixing Kit

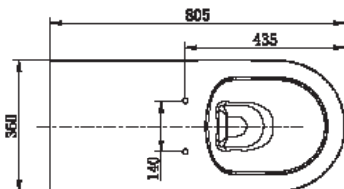


# INSTALLATION INSTRUCTIONS

## Wolfen 800 Back to Wall Pan with Single Flap Seat (4\*)



Notes: All measurements should be taken from the finished wall/floor



**Set-Up**

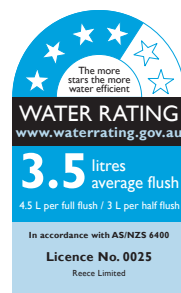
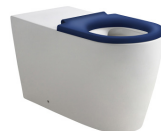
1. Rough in positions of water inlet pipe, waste outlet and fixing bracket holes. Ensure inlet connection extends 100mm from finished wall.
2. Prepare waste outlet according to required set out (190mm min - 290mm max) and drill floor fixing brackets into position (60mm inside traced mark of pan rim).

**S-Trap Installation**

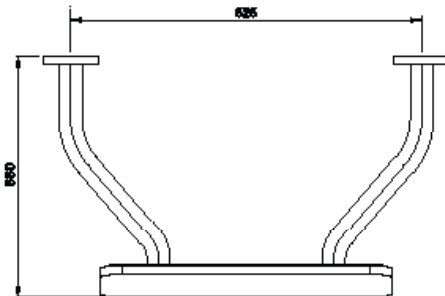
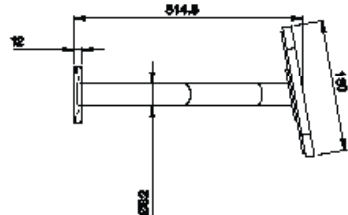
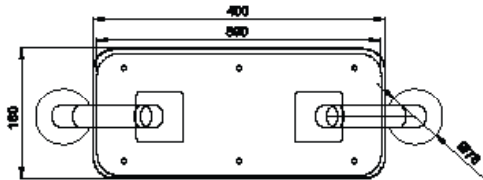
1. Lubricate the rubber fins of the pan bend and position the waste pipe at the required height. Fix the pan connector back to the wall using the rod and bracket.
2. Lift pan over floor fixing brackets and push pan back to wall. Ensure you make a firm connection with inlet pipe and connect pan spigot into waste bend firmly. Flush test and check for leaks
3. Ensure that pan is level. Fix pan to floor using fixing screws and flexible sealant. Install single flap seat

# TECHNICAL INFORMATION

Model	Wolfen 800 Back to Wall Pan Single Seat with Backrest White (4*)	Wolfen 800 Back to Wall Pan Single Seat with Backrest Blue (4*)	Wolfen 800 Back to Wall Pan Single Seat with Backrest Grey (4*)
Product Code	9509294	509296	509298
Material	Pan - Vitreous China Cistern - Vitreous China Seat - Urea	Pan - Vitreous China Cistern - Vitreous China Seat - Urea	Pan - Vitreous China Cistern - Vitreous China Seat - Urea
Colour	Pan - White Seat - White	Pan - White Seat - White	Pan - White Seat - White
Weight	Pan 50kg Seat 1.1kg	Pan 50kg Seat 1.1kg	Pan 50kg Seat 1.1kg
Water Inlet Position	Back Inlet	Back Inlet	Back Inlet
Toilet Seat	Single Flap Seat	Single Flap Seat	Single Flap Seat
Rim Configuration	Rimless	Rimless	Rimless
Set Out (mm)	185 min - 285 max	185 min - 285 max	185 min - 285 max
Inlet Valve Pressure	500 kPa	500 kPa	500 kPa
Components	9508007 Wolfen Single Flap Toilet Seat White	9508008 Wolfen Single Flap Toilet Seat Blue	9508009 Wolfen Single Flap Toilet Seat Grey
	9507171 Wolfen Back Rest with Fixed Armst		
Spare Parts	9508718 Wolfen Fixing Kit		
	508717 Wolfen Seat Buffers (Sideways)		



<b>Model</b>	Wolfen Back Rest with Fixed Arms
<b>Product Code</b>	9507171
<b>Colour</b>	Stainless Steel Arms White Back Rest
<b>Finish</b>	Brushed Arms
<b>Material</b>	304 Grade Stainless Steel Arms UV stabilised HDPE Back Rest 316 Grade Stainless Steel Coach Screws



# INSTALLATION INSTRUCTIONS

## Wolfen Back Rest with Fixed Arms

9507171

### Important Note

The Wolfen back rest should be properly assembled, installed and cared for. Failure to follow the below instructions may result in serious injury.

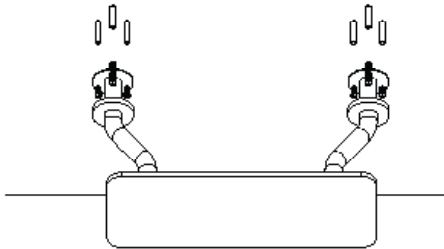
The back rest bar meets AS 1428.1-2009 and is manufactured from high quality stainless steel with a HDPE back rest. It has been tested to a loading of 1100N. Proper care must be taken to install the grab bar to an appropriate load bearing base, using appropriate fixing bolts.

### Installation Instructions

1. Confirm the contents of the box, The box should contain 1 back rest and 6 screws.

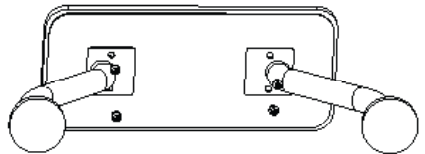
### IMPORTANT INSTALLATION NOTE:

Where there is an inwall cistern installed, take care to ensure that no screws are drilled into the concealed cistern.



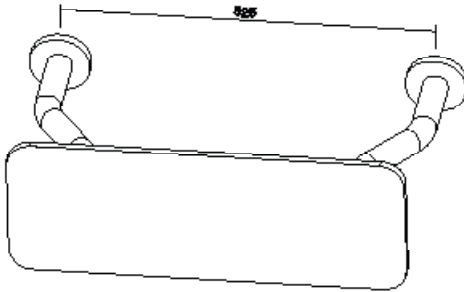
2. Assemble the two legs to the stainless panel.

Ensure that the wall the back rest is to be mounted to contains sufficient timber to provide proper structural support.





3. Using the mounting flange plates as a template, mark the centre of the screw hole locations and drill the holes.



4. Install the back rest with the screws provided. Inspect each screw to ensure it is screwed in fully

5. Twist the flanges onto the mounting flange plates.

#### **Maintenance**

Clean product with mild soap and water.

## **CLEANING**

We recommend the use of soap water or approved cleaners. This product should not be cleaned with abrasive materials. Damage caused by any improper treatment is not covered by the product warranty. Refer to Warranty Conditions.

# REECE PRODUCT QUALITY GUARANTEE



You have purchased a quality product from Reece Australia Pty Ltd ABN 84 004 097 090 ("Reece"). This product is covered by a 5 year replacement product warranty and a 12 month warranty over spare parts and labour.

## 5 YEAR WARRANTY

This warranty covers faults in the product construction, material and assembly. Products which are within 5 years from the date of purchase, found upon inspection by an authorised Reece representative, to be defective in construction, material or assembly, will be repaired or exchanged with an equivalent product free of charge. Replaced items become Reece's property.

All replacement products will be available for collection without charge to the customer at the nearest Reece branch to the customer's location, or elsewhere as agreed between the customer and Reece.

## Labour and Spare Parts

The labour for the replacement of products and spare parts to which this warranty applies will be supplied by Reece or relevant supplier using licensed plumbers engaged by Reece or relevant supplier within 1 year from the date of purchase. Spare parts other than those listed in the Manufacturer's Provisions above, which are within 1 year from the date of purchase found upon inspection by an authorised Reece representative to be defective in construction, material or assembly, will be replaced free of charge.

## Warranty Conditions

This warranty will apply only under all of the following conditions:

- The item has been installed by a licensed plumber
- Failure is due to a fault in the manufacture of the product
- Proof of purchase (including the date of purchase) is provided
- The installation of the product is in accordance with the instructions provided

This warranty does not cover products purchased as an ex-display without being fully checked and tested for sale by the manufacturer.

This warranty does not include faults caused by:

- Unsuitable or improper use
- Incorrect installation or installation not in accordance with the instructions provided
- Installation or part installation by the purchaser or any person other than a LICENSED PLUMBER
- Normal wear and tear
- Inadequate or complete lack of maintenance
- Chemical, electrochemical or electrical influences
- Harsh detergents or abrasive cleaners used on product finishes

## EXCLUSIONS

To the fullest extent permitted by law, Reece excludes all liability for damage or injury to any person, damage to any property, and any indirect consequential or other loss or damage.

## CLAIM PROCEDURE

For all warranty queries customers are to contact the branch where the product was purchased. These details can be found on your purchase invoice.

Our goods come with guarantees that cannot be excluded under the Australian Consumer Law. You are entitled to a replacement or refund for a major failure and for compensation for any other reasonably foreseeable loss or damage. You are also entitled to have the goods repaired or replaced if the goods fail to be of acceptable quality and the failure does not amount to a major failure.

**Don't risk it, use a licensed plumber.™**

IF AFTER CHECKING THE  
INSTALLATION INSTRUCTIONS  
AND IMPORTANT  
INFORMATION, THE PROBLEM  
HAS NOT BEEN IDENTIFIED,  
CUSTOMERS ARE TO  
CONTACT THE BRANCH  
WHERE THE PRODUCT WAS  
PURCHASED. THESE DETAILS  
CAN BE FOUND ON YOUR  
PURCHASE INVOICE.

General contact details for  
Reece are as follows:

Reece Australia Pty Ltd

118 Burwood Hwy

Burwood VIC 3125

+61 3 9274 0000

[admin@reece.com.au](mailto:admin@reece.com.au)



**WOLFEN™**

[reece.com.au/wolfen](https://reece.com.au/wolfen)