

POSH SOLUS MK2 SHOWER/BATH MIXER DIVERTER

INSTALLATION INSTRUCTIONS

Note

Mixer must be installed by a qualified plumber.

Equal pressure for hot and cold water supply is required for this single lever mixer. This product may not be suitable where hot water pressure is insufficient.

Important

Your mixer comes to you already factory assembled and tested. We do not recommend the dismantling of any internal part of the mixer. The mixers are factory tested and sealed so as to give the best performance.

1. Please flush out new pipe work prior to connecting the new mixer.
2. In some areas where the incoming water exceeds 500kpa, an approved pressure limiting device must be installed. Equal pressure for hot and cold water supply is required for this single lever mixer.
3. Mixers are recommended for use on mains pressure and instantaneous systems only.
4. When installing the mixer make sure that the cap and handle (1 & 3) are removed with the shower diverter cover plate (9).

5. In a typical installation, the mixer is mounted on a timber/metal noggin and secured with saddles.

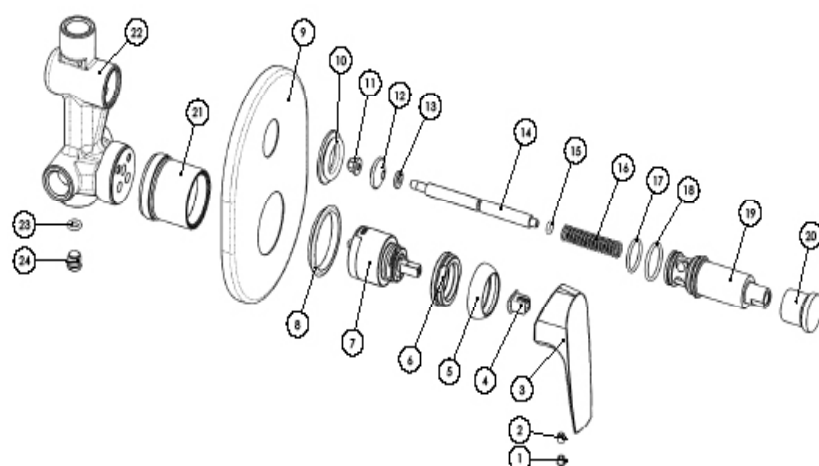
Note: Arrow stamped on the outlet must face up toward shower. If the mixer is to be used as a bath mixer, the pipe will need to be looped to go to the bath outlet. 6. Connect mixer to hot and cold water supply.

6. Connect to bath and shower outlets. 8. Pressure check all connections. Leaking joints are not covered by the warranty.
7. During construction protect the exposed finished surface by using the plastic cover provided.
8. When ready for finishing, remove the plastic cover and reassemble handle and cap (1 & 3).

SERVICING - REPLACEMENT OF CARTRIDGE

1. Call the plumber, preferably the one that installed the mixer (most problems are caused by supply lines not being cleaned out properly prior to mixer installation). Remove indicator cap (1) and unscrew the locking screw (2).
2. Lift off lever (3) and remove dress ring and locking nut (5 & 8).
3. Lift out cartridge (7) and replace with new, making sure the two lugs on bottom of the cartridge sit properly into the allocated holes at the base of the body (22).

EXPLODED VIEW



Item	Description
1	Indicator cap
2	Grub screw
3	Handle
4	Thermal cap
5	Dome
6	Locking nut
7	Cartridge
8	Internal plate seal
9	Shower mixer diverter cover
10-20	Diverter Assembly
21	Cartridge housing
22	Main body

Plumbers, please ensure a copy of the installation instructions is left with the end user for future reference