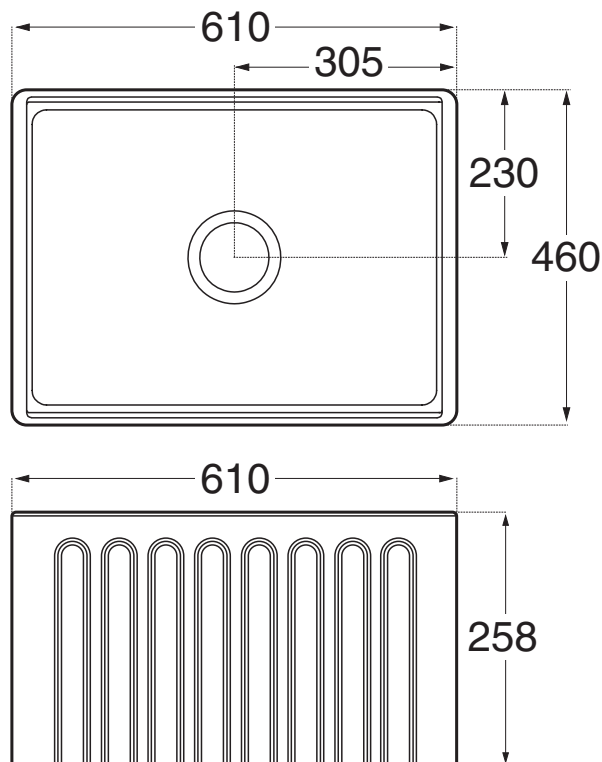


# Memo Harper Butler Sink Fine Fireclay

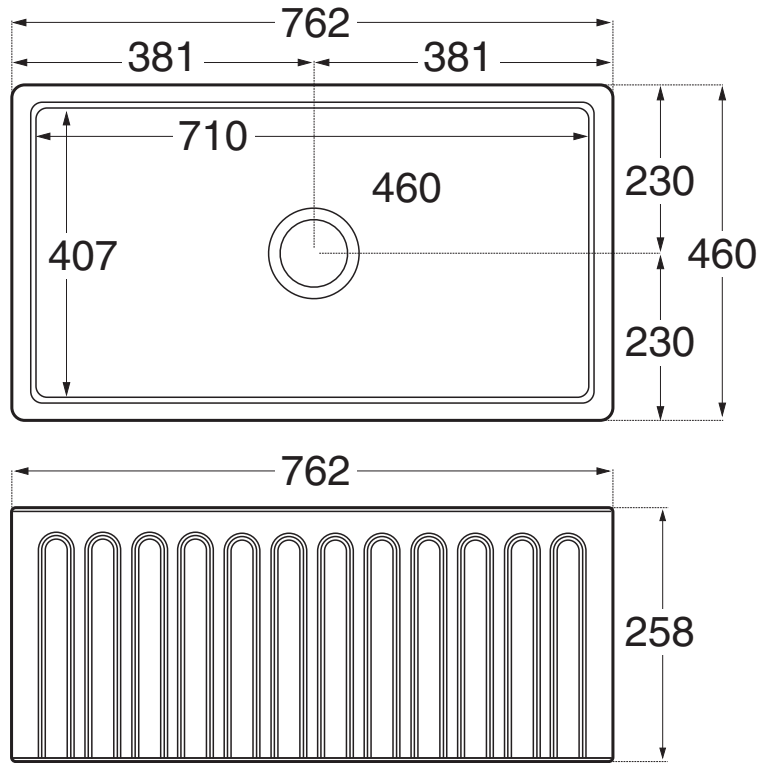
## IMPORTANT NOTE

- Read these instructions carefully before you begin this installation.
- Observe all local plumbing and building codes.
- Due to the various cut out sizes possible, and natural variation in fireclay, a template is not supplied.
- Prior to installation, unpack the new sink and inspect it for damage. Return the sink to its protective carton until you are ready to install it.
- Due to the variety of installations possible with this sink, you may need to use procedures other than those described.
- It is very important that proper high-quality materials and silicones are used with your sink
- The cabinet and frame shown in these instructions are generic and may not represent the actual design or structure.
- Due to the nature of undercounter installations, it is recommended that undercounter sink installations be performed by trained and experienced installers.
- To ensure a safe and damage-free installation, two people should install the sink.
- All information in these instructions is based on the latest product information available at the time of publication.

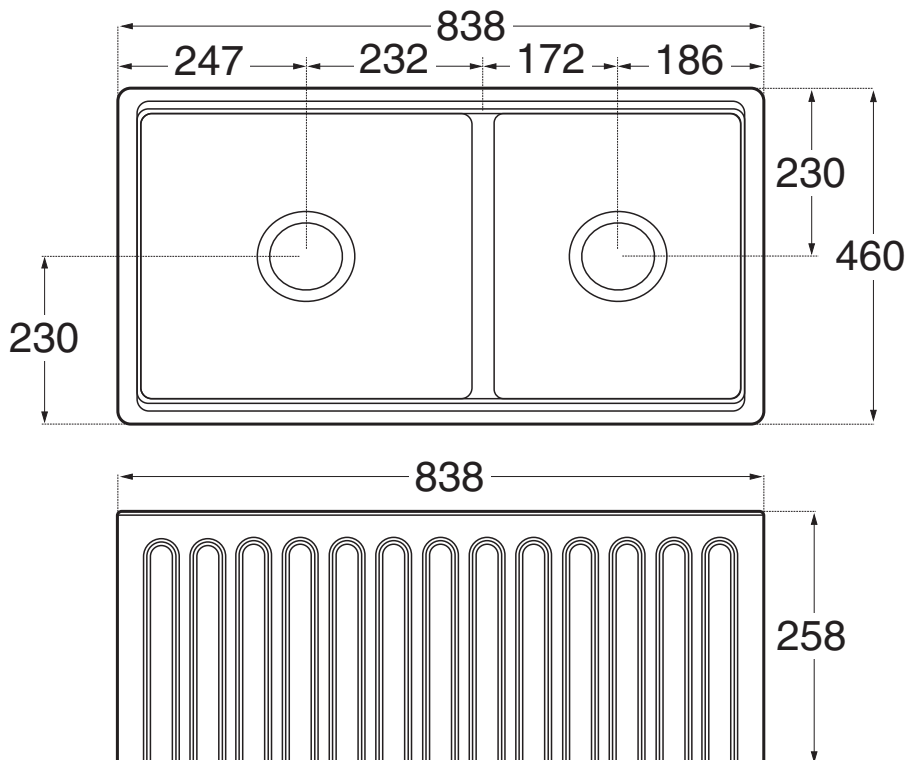
## Memo Harper Butler Sink Fine Fireclay 610mm



**Memo Harper Butler Sink Fine Fireclay 762mm**

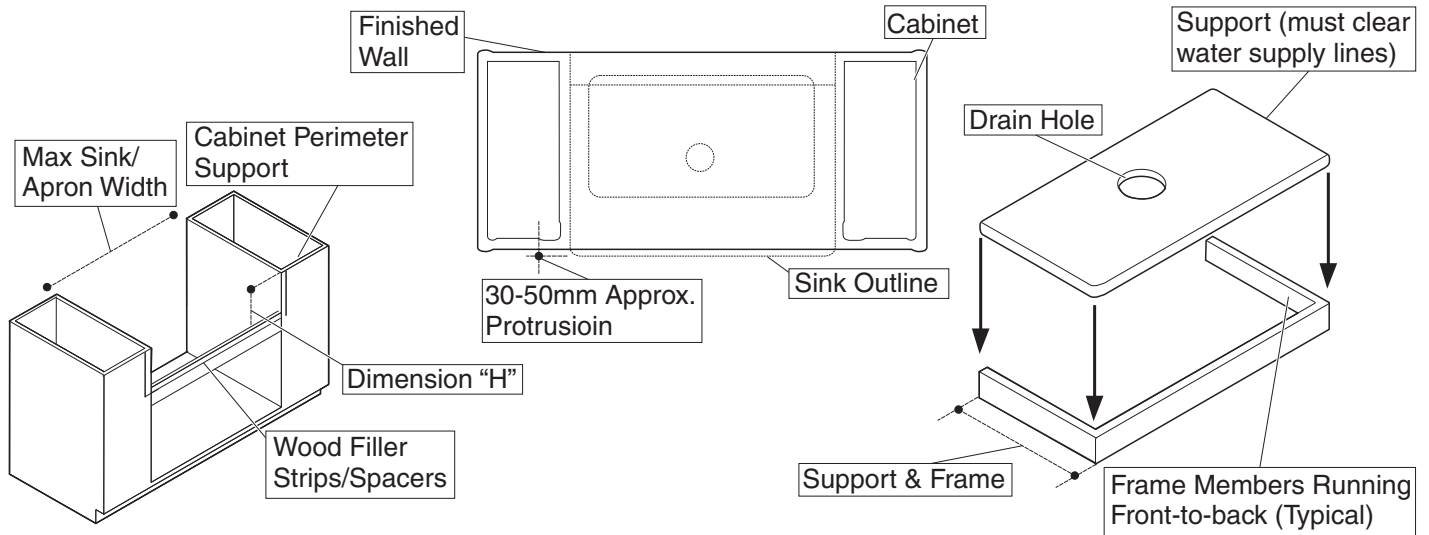


**Memo Harper Butler Sink Fine Fireclay 838mm**

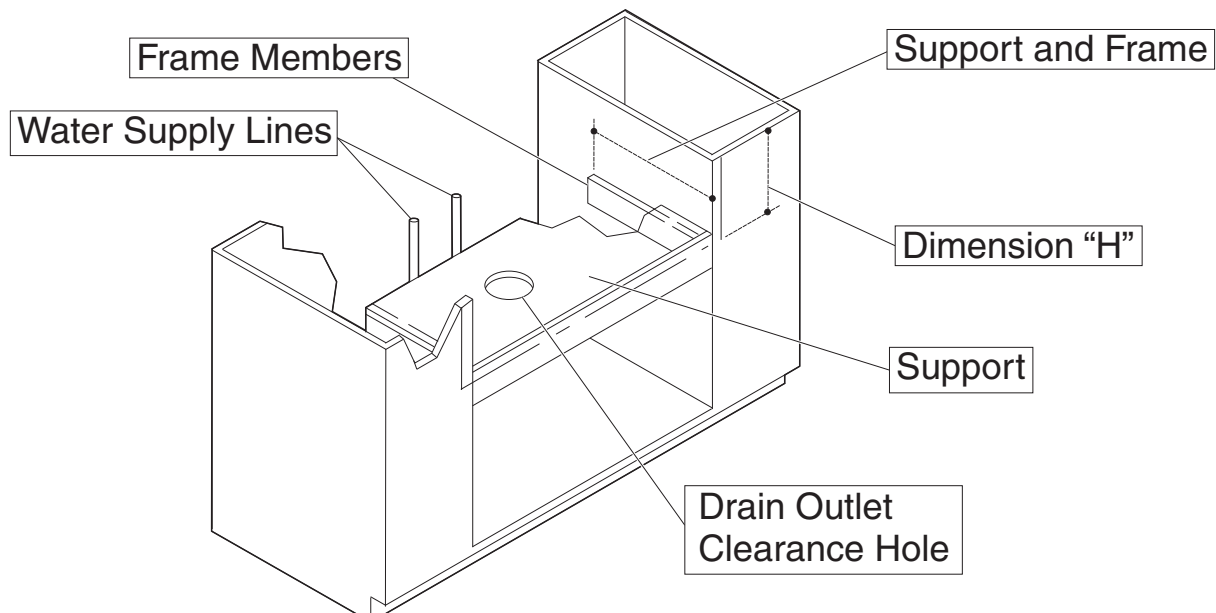


# Memo Harper Butler Sink Fine Fireclay

## 2. CABINET/SUPPORT FRAME CONSTRUCTION

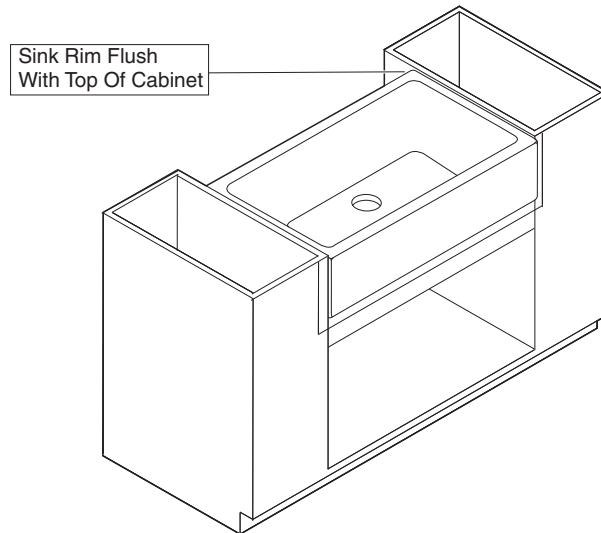


1. Measure the width of the sink (the top of the sink is approximately 6 mm wider than the bottom).
2. The cabinet opening should equal the maximum sink width to ensure a minimum gap between the sink and the cabinet.
3. **NOTE:** If the sink is not available at the time of installation, make allowances to add wood filler strips or spacers to the cabinet opening after the frame and before the sink is installed.
4. We recommend the sink extends 30 to 50mm beyond the front of the cabinet, but this is only for aesthetic reasons, and is the choice of the owner.
5. Construct a wood support frame to fit inside the cabinet opening. Allow adequate clearance for the pipes between the support and the finished wall.
6. Position the support frame in the cabinet opening so that when installed, the top of the sink will be level and flush with the top of the cabinet (Dimension H).
7. Secure the support frame to the cabinet. Position the securing hardware to allow for easy removal should the sink need to be removed or replaced.
8. Locate and cut out the waste outlet clearance hole in the support. The hole diameter **must** clear the garbage disposal mounting system, if used.

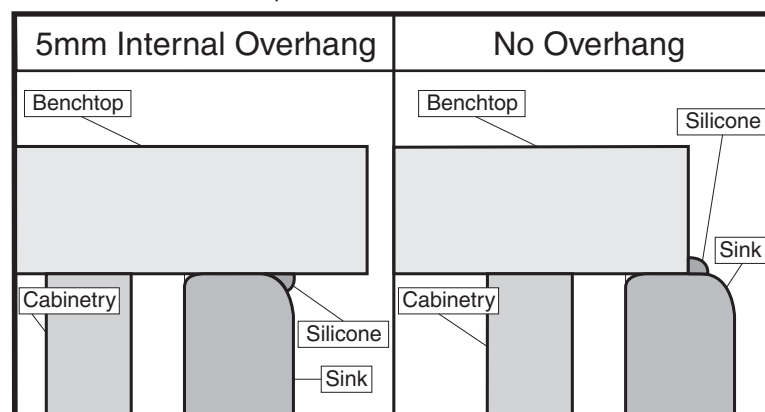


# Memo Harper Butler Sink Fine Fireclay

## 3. INSTALLING THE SINK AND BENCHTOP



1. Verify that the sink will fit in the cabinet opening. If necessary, adjust the opening by sanding the opening or adding wood filler strips.
2. Carefully position the sink within the frame, making sure to centre the sink in the cabinet.
3. Apply a 2.5 cm spot of sealant at each corner of the frame where it will contact the sink.
4. **NOTE:** Use shims to level the sink if needed. If using shims additional sealant will be needed.
5. Install the basket waste or garbage disposal to the sink according to the manufacturer's instructions. Ensure silicone is used between the top flange of the basket waste and the sink, to ensure water does not leak out of the sink when plugged off.
6. Optional: Apply sealant between the cabinet and the side of the sink.
7. Verify that the sink is level. The top of the sink should be flush with the top of the cabinet to allow proper countertop installation. Adjust or shim between the sink and support if needed.
8. Carefully measure the sink and the bench top to determine the exact location of the sink cut-out in the benchtop. Some use a 5mm internal stone overhang on the back and sides. Some prefer to install it flush with no overhang.
9. Cut and polish benchtop
10. Place bench top on top of cabinet and sink, install tapware, and use silicone between sink and benchtop



## Care Details

We recommend the use of soapy water or approved cleaners. This product should not be cleaned with abrasive materials. For more detailed cleaning instructions, please refer to Granite Sink Care and Maintenance Instructions. Damage caused by any improper treatment is not covered by the product warranty - refer to Warranty Conditions.

**Plumbers, please ensure a copy of the installation instruction is left with the end user for future reference.**