

American Standard Signature Hygiene Rim Close Coupled Back to Wall Bottom Inlet Pan White (4 Star)

9509599

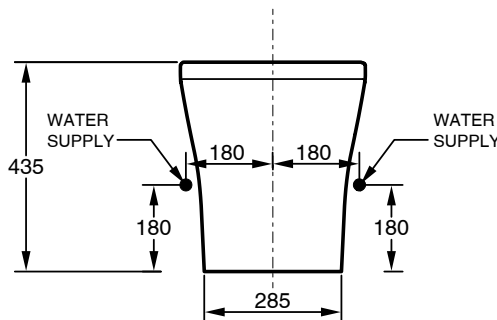
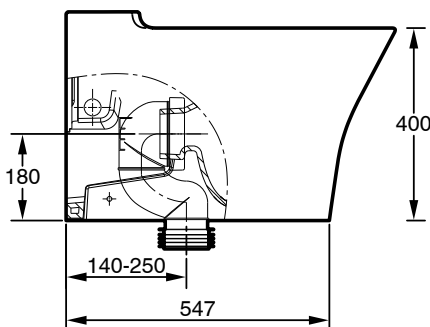
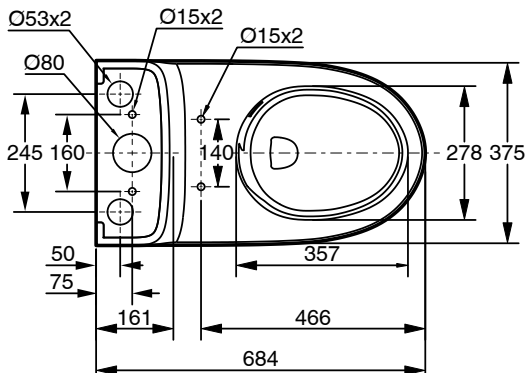
SPECIFICATIONS

Recommended Use	Domestic;Hotel;Commercial
Pan Material	Vitreous China
Weight of Pan (kg)	34
Rim Configuration	Hygiene
Toilet Configuration	Close Coupled;Back to Wall
Pan Outlet Type	S Trap with Supplied Conversion Bend
Water Inlet Position	Bottom
Mounting	Floor
Toilet Seat Included	No

WARRANTY

Warranty - Domestic Use (Years)	10
Spare Parts & Labour (Years)	1

Please refer to Warranty Page for full Terms and Conditions



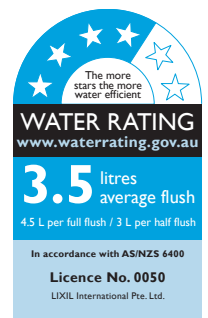
Dimensions are nominal measurements only.

CLEANING RECOMMENDATIONS:

We recommend the use of soapy water or approved cleaners. This product should not be cleaned with abrasive materials. Damage caused by any improper treatment is not covered by the product warranty. Refer to Warranty Conditions

Disclaimer: Products in this specification manual must by regulation be installed by licensed and registered trade people. The manufacturer/distributor reserves the right to vary specifications or delete models from their range without prior notification. Dimensions are nominal measurements only. Dimensions and set-outs listed are correct at time of publication however the manufacturer/distributor takes no responsibility for printing errors.

Published 19/03/2025



To see the complete American Standard range go to www.reece.com.au/bathrooms