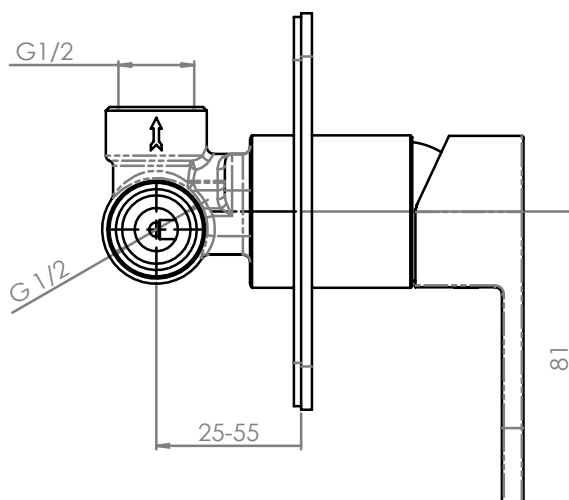
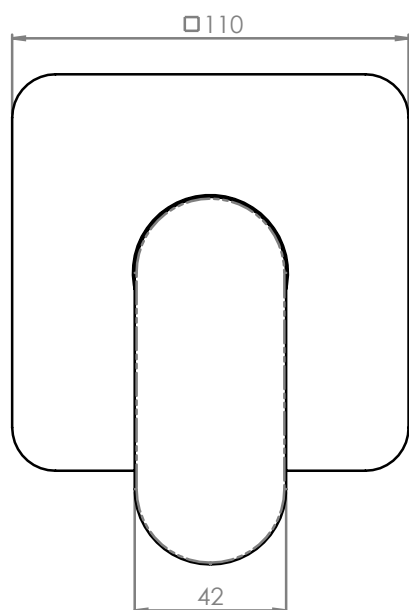


Nobili Up Shower Mixer Chrome



SPECIFICATIONS

Recommended use	Domestic, hotel and commercial
Colour availability	Chrome
Pressure rating	Maximum continuous operating pressure 1000 kPa. Note: For best performance and longer life we recommend 150-500 kPa.
Temperature rating	Maximum continuous working temperature 80°
Suitable Hot Water Units	Storage tank: Yes Continuous Flow: Yes Gravity Feed: Not recommended
Standards	AS/NZS 3718



CLEANING RECOMMENDATIONS

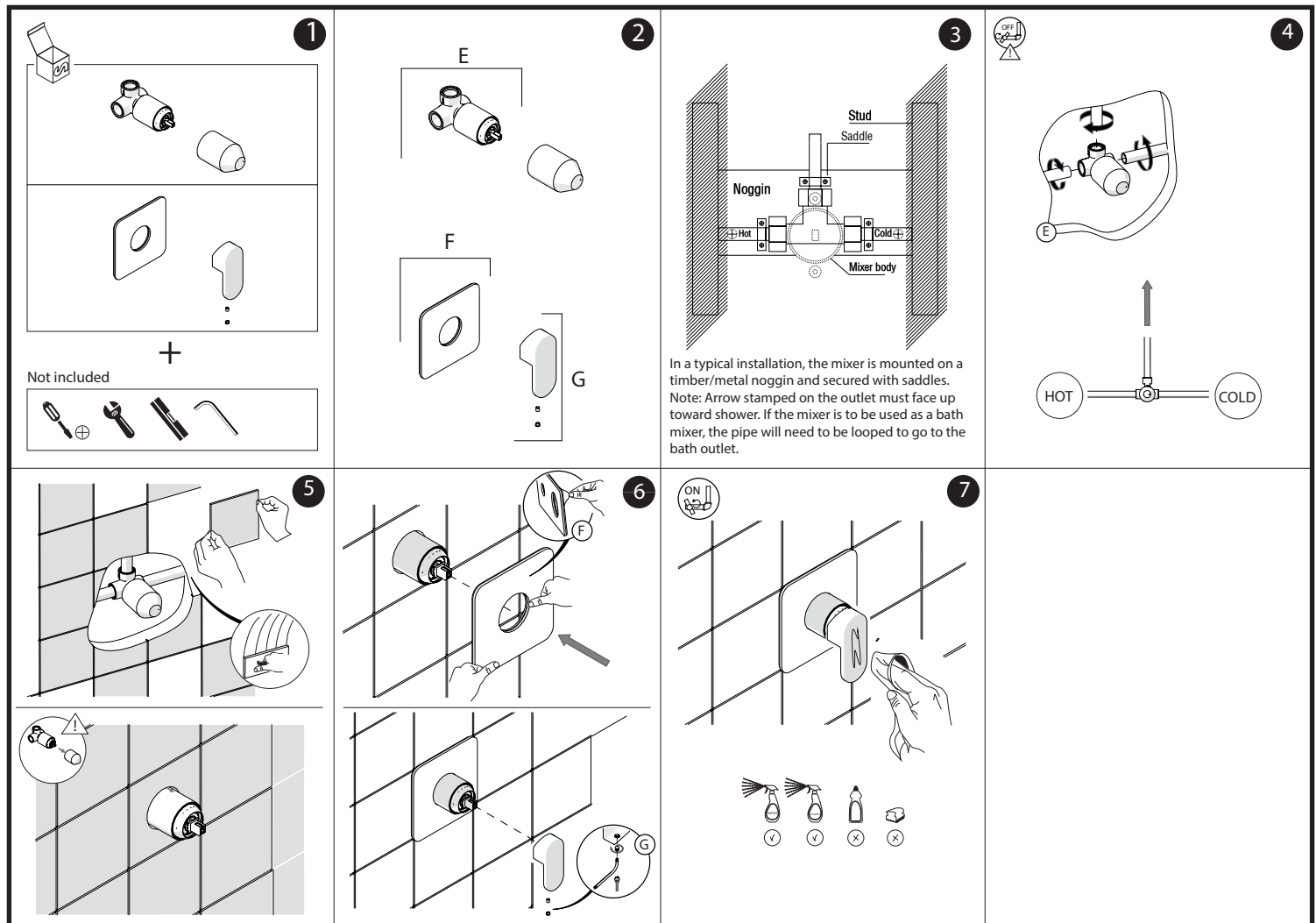
This product should not be cleaned with abrasive materials eg. steel wool/scourers. Do not use any corrosive or abrasive cleaning agents containing acids or scouring agents. Bleaches can also discolour products and therefore should not be used. Damage caused by any improper treatment is not covered by the product warranty- refer to Warranty Conditions

Nobili Up Shower Mixer Chrome

INSTALLATION INSTRUCTIONS

Important Note

Mixer must be installed to requirements of AZ/NZS 3500 by a qualified plumber. Your mixer comes to you already factory assembled and tested. We do not recommend the dismantling of any internal part of the mixer. The mixers are factory tested and sealed so as to give the best performance.

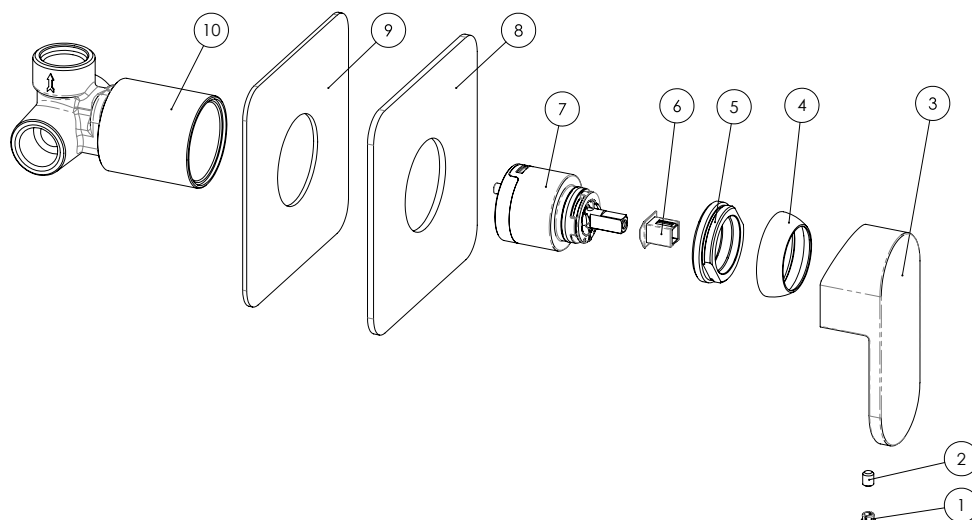


Nobili Up Shower Mixer Chrome

SERVICING - CARTRIDGE REPLACEMENT

1. Remove chrome cover (1) and unscrew the grub screw (2).
2. Lift off mixer handle (3) and remove cartridge dome (4) and cartridge lock nut (5).
3. Remove cartridge (7) and replace with new, making sure the two lugs on bottom of the cartridge sit properly into the allocated holes at the base of the shower mixer body (10).
4. Replace the cartridge lock nut (5), cartridge dome (4) and mixer handle (3).
5. Tighten grub screw (2) and push in chrome cover (1).

EXPLODED VIEW



Item	Description
1	Chrome Cover
2	Grub Screw
3	Mixer Handle
4	Cartridge Dome
5	Cartridge Lock Nut
6	Thermal Barrier
7	Cartridge
8	Backplate
9	Backplate Sealing Foam
10	Mixer Body