



LIPSTICK MINI STOP VALVE LEAD FREE

LIPSTICK MINI STOP VALVE is quarter turn angle valve with anti-lime system inside.

- Three surface finishings: Polished chrome plated, matt black and white.
- Metal handle: ergonomic, compact and high endurance.
- **VITAQ system**: more life less lime scale at higher temperatures:
 - Increase your installation life span.
 - Smoother open/close operation.
 - Eliminating lime scale from building up over time.
- One piece stamped body, compact and resistant.
- Double O-ring on ball-stem to secure external leak tightness.
- 100% of the valves are tested for outer and inner leakage.



TECHNICAL DATA SHEET LIPSTICK MINI STOP VALVE

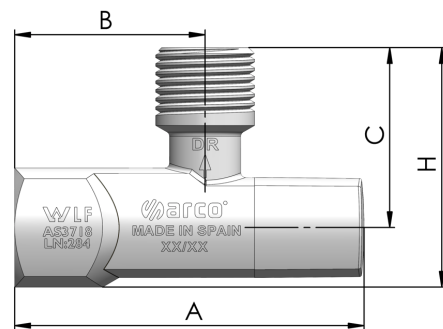
PRODUCT SCOPE

Quarter turn mini stop valves 15mm x 15mm installed upstream of a terminal fitting to shut off water supply in a quick and safe way isolating the device to service or repair. Intended for use in residential and commercial potable water distribution networks. It includes VITAQ system for preventing lime scale problems.

GENERAL DIMENSIONS, PRESSURE & TEMPERATURE

Code	Size	A (mm)	B (mm)	C (mm)	H (mm)	PN (KPa)	Temp. range (°C)
AS540	1/2F x 1/2M	73	40	38	50	1.600	0 up to 80
AS541	1/2F x 1/2M	73	40	38	50	1.600	0 up to 80
AS542	1/2F x 1/2M	73	40	38	50	1.600	0 up to 80

(*) For continuous hot water use up to 80°C (excluding freezing)



FINISHINGS



AS540



AS542

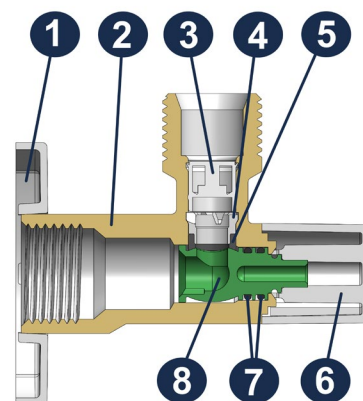


AS541



MATERIALS

Item	Component	Material	Finishing
1	Rosette	ABS / ZAMAK**	According to model
2	Body	CW511L Brass	According to model
3	Check valve	POM & Inox	-
4	Supporting clip	POM	-
5	Seat	EPDM	-
6	Handle	ZAMAK	According to model
7	O-ring	EPDM	-
8	Ball-Stem	Anti-lime Polymer	VITAQ



(*) ABS for AS540 and ZAMAK for AS541 & AS542

VITAQ SYSTEM

The system created to solve problems of limescale in installations, extending the valves service life by protecting them from the main pain points in any installation:

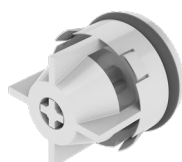
- Handle blocking. After several years limescale can block the valve manoeuvre, making difficult the downstream devices maintenance or repair. VITAQ system avoids the blocking by preventing the lime scale growth.
- Bore reduction. Lime scale can grow up and reduce the bore of the valve, VITAQ system keeps the flow rate over the time.



NON RETURN VALVE

These valves incorporate a check valve system according to standard AS/NZS 2845.1:2022.

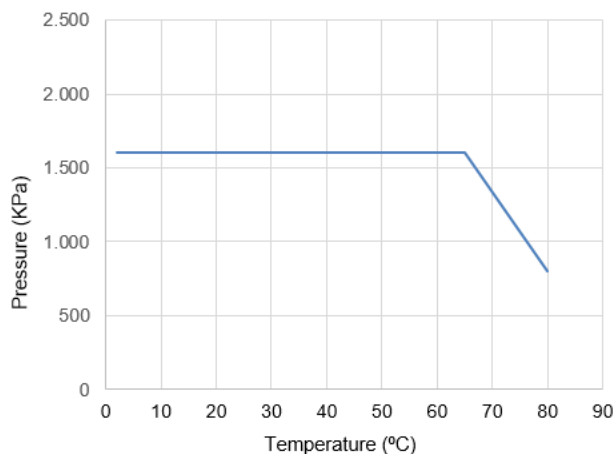
The integrated check valve is installed close the outlet of the valve prevents from backflow from down stream network and devices, resulting in safer water.





TECHNICAL DATA

Pressure vs temperature



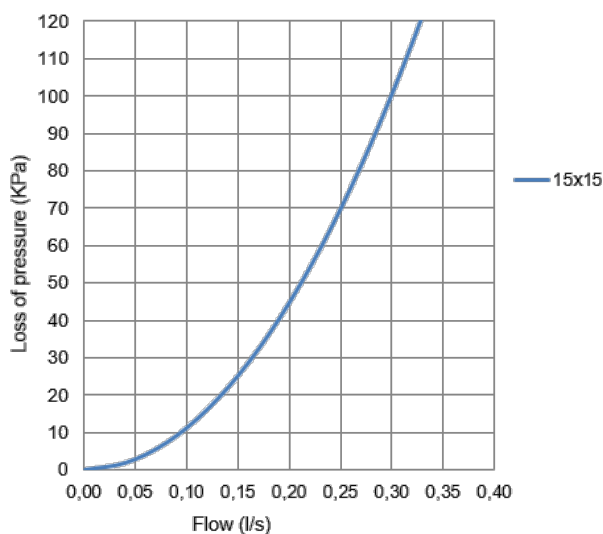
Compatibility with fluids

Fluid	Compatibility
Drinking water	Excellent

For any other fluid, please contact Arco technical Service.

Hydraulic features.

Flow vs Loss of pressure



Size	15 x 15
Kv	1,08

Kv (m³/h), cubic meters per hour that flow through the valve generating a loss of pressure of 1 bar.

INSTALATION INSTRUCTIONS

This product is designed to be used in drinking water supply, in compliance with the Lead-Free requirements of the National Construction Code Volume 3. For installation refer to AS/NZS 3500.

Nominal Pressure 1.600 Kpa. Temperature range 0 to 80°C excluding freezing.

1. Switch off flow of water to the installation area.
2. Apply sealing material tape to the thread of the inflow pipe.
3. Thread the valve onto the inflow pipe.
4. Connect hose to fixture and to the outflow connection of the valve, ensure that connections are watertight.
5. Check operation of valve by turning the handle a full quarter turn to ensure connections are watertight.



All products have an enviromental impact during its life cicle, even once retired. All the components of this product can be recycled. Once the use is over, leave the valve in any recycling green point. Válvulas Arco reserves the right to change the product or any of its technical specifications without prior notice.

FT01530ING – Edition 2024-07