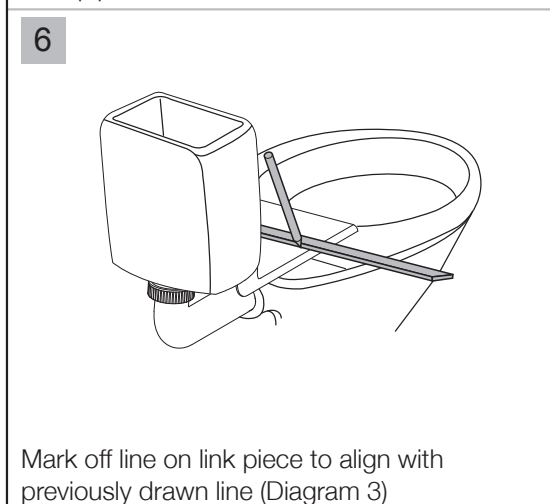
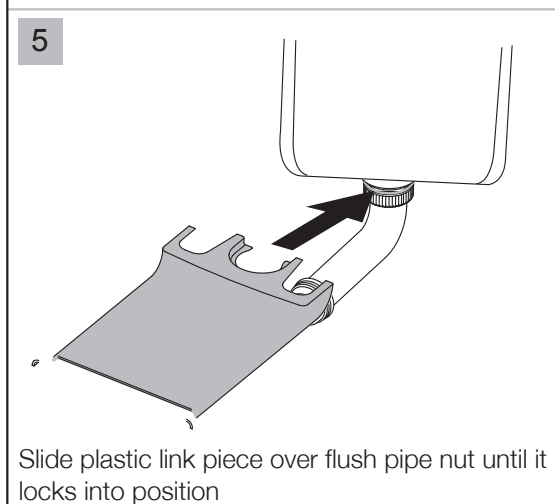
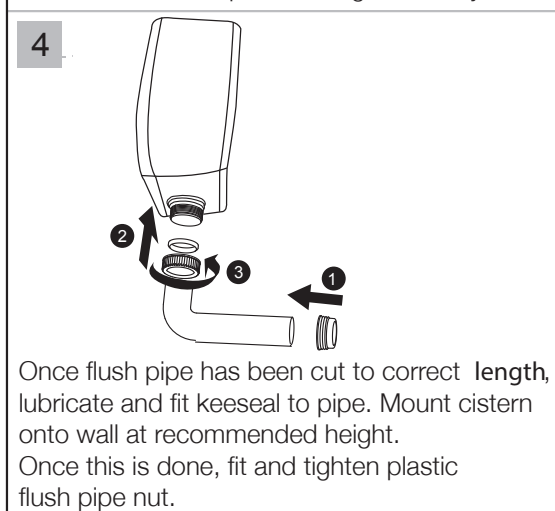
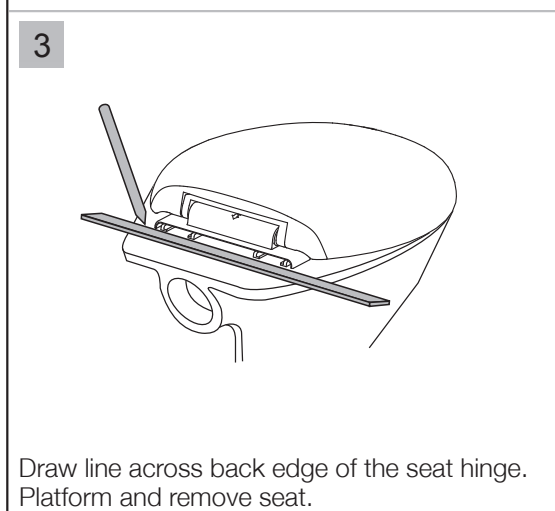
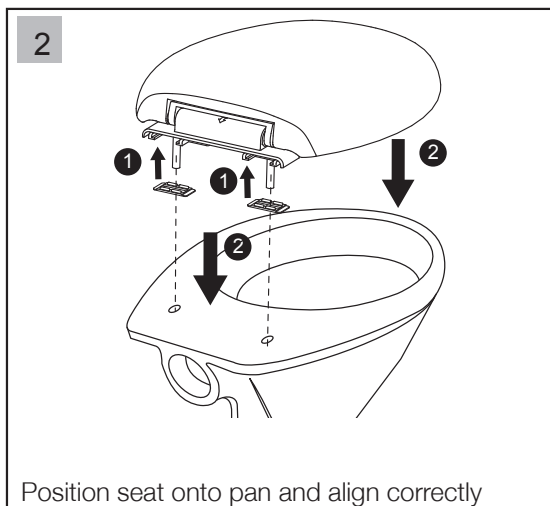
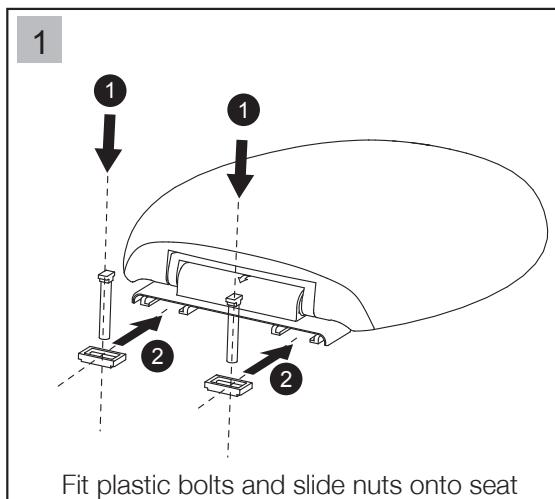


## Posh Solus Link Toilet Suite White (4 Star)

### INSTALLATION INSTRUCTIONS

1. Check that that pan is installed within dimensional tolerances. Place suite in position. Mark out the fixing holes for the cistern (cistern should be fixed to a noggin or solid wall).
2. If required, modify flush pipe to fit pan and cistern.
3. To install the link piece, flush pipe and seat, refer to the instructions opposite.

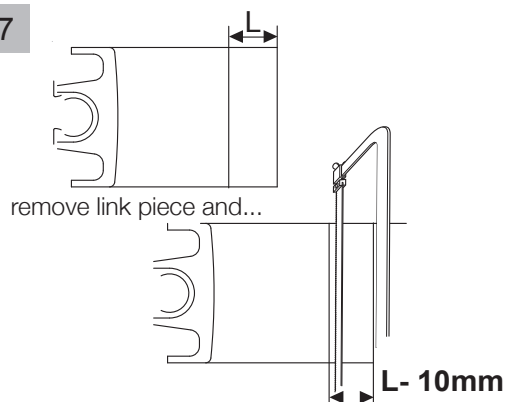


**Plumbers, please ensure a copy of the installation instructions is left with the end user for future reference**

Published 16/06/2020

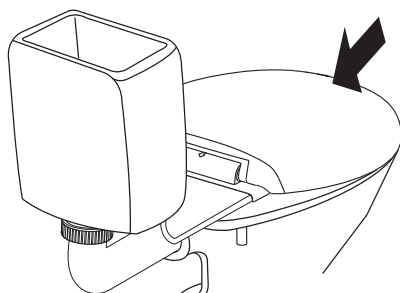
## Posh Solus Link Toilet Suite White (4 Star)

**7**



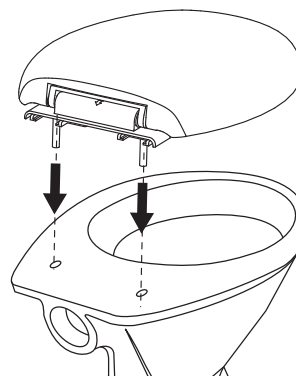
Cut off as per distance (L) less 10mm.  
Reinstall link piece

**9**



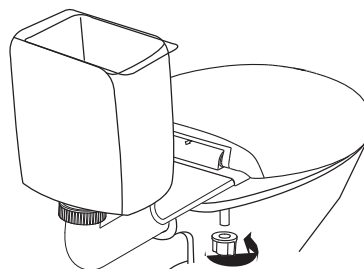
Slide/position seat into link piece

**8**



Reposition seat back onto pan and slightly  
tighten seat fixing bolts

**10**



Fully tighten bolts to lock seat and link into  
position. Ensure all connections are secure  
and water tight.