

HVAC Gear Operated Lugged Butterfly Valve

DN 50-300 Non-Potable Water

Specifications

Recommended use	Dura Industrial butterfly valves are selected for use in HVAC and non-potable water applications. The Dura Industrial butterfly valve is a soft sealing valve for installation with flanges drilled in accordance with AS 2129 Table E. Engineered for long-term, maintenance-free performance.
Features	Light-weight compact design. Ductile Iron with EPDM encapsulated stainless steel seat. Epoxy coating to provide corrosion resistance. Low torque operation.
Pressure	Working - 1600kPa Shell Test - 2400kPa Seat - 1760kPa
Temperature Range	-10°C to 120°C
Warranty	12 Months
Standards	ATS 5200.012 Flange - AS2129 Table E Top Flange - ISO5211/1

Product Image



Materials

Item	Description	Material
1	Gear Box	See 'Gear Box Materials'
2	Bushing	PTFE
3	O-Ring	EPDM
4	Taper Pin	Stainless Steel 316
5	Disc	CF8 Alloy
6	Seat	EPDM
7	Body	Ductile Iron
8	Stem	Stainless Steel 410
9	Bolt	Stainless Steel
10	Key	Carbon Steel

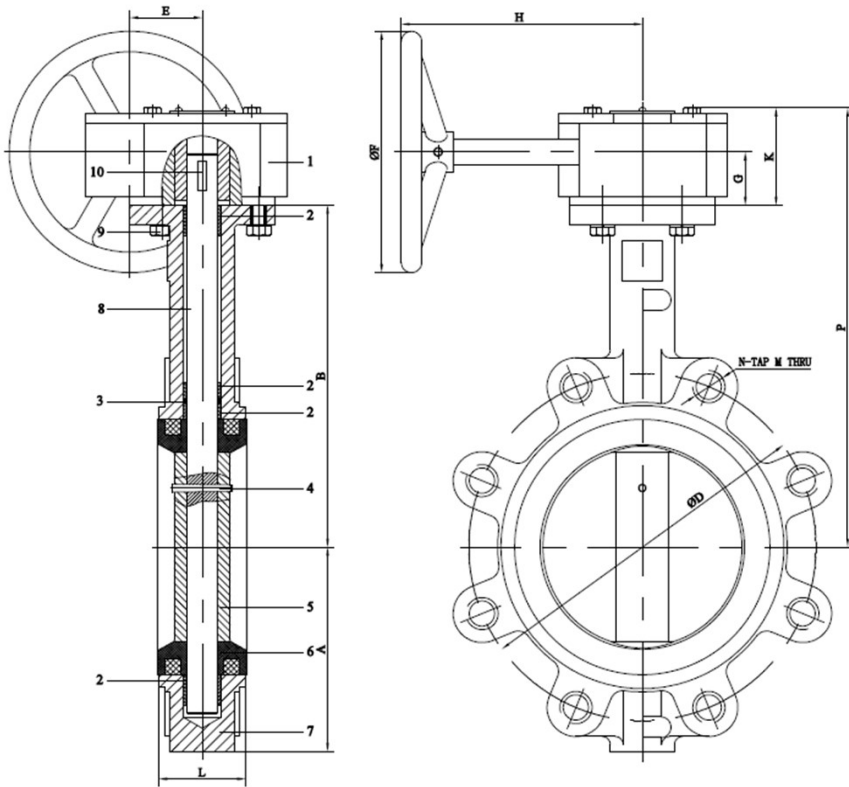
Gear Box Materials

	DN 50-150	DN 200-300
Housing	Ductile Iron	Cast Iron
Cover	Cast Iron	Aluminium
Worm	Carbon Steel	Carbon Steel
Worm Gear	Ductile Iron	Ductile Iron
Shaft	Stainless Steel 304	Stainless Steel 304
Handwheel	Cast Iron	Cast Iron

HVAC Gear Operated Lugged Butterfly Valve

DN 50-300 Non-Potable Water

Product Drawing



Dimensions

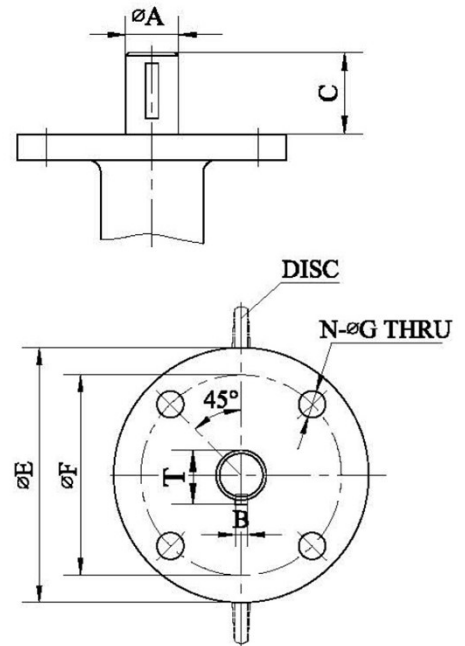
Code	Description	Size DN	Weight kg	Bolt Holes	A mm	B mm	AS2129 TABLE øD	E M	N	E mm	øF mm	G	H	L mm	Torque N·M
1103476	DURA IND BFLY VALVE LUGGED TE GEARED 50	50	6	4	76	162	114	M16	4	44	135	28	139	42	19
1103477	DURA IND BFLY VALVE LUGGED TE GEARED 65	65	6.5	4	89	174	127	M16	4	44	135	28	139	45	31
1103478	DURA IND BFLY VALVE LUGGED TE GEARED 80	80	7	4	95	181	146	M16	4	44	135	28	139	45	40
1103479	DURA IND BFLY VALVE LUGGED TE GEARED 100	100	9	8	114	200	178	M16	8	44	135	28	139	52	65
1103480	DURA IND BFLY VALVE LUGGED TE GEARED 125	125	12	8	127	213	210	M16	8	44	135	28	139	54	102
1103481	DURA IND BFLY VLV LUG TE GEARED 150	150	13.1	8	139	225	235	M20	8	44	135	28	139	56	148
1103482	DURA IND BFLY VLV LUG TE GEARED 200	200	25	8	177	260	292	M20	8	62	275	39.5	211	60	240
1103483	DURA IND BFLY VLV LUG TE GEARED 250	250	34	12	203	292	356	M20	12	62	275	39.5	211	66	380
1103484	DURA IND BFLY VLV LUG TE GEARED 300	300	43	12	242	337	406	M24	12	78	275	40	220	77	538

Disclaimer: Products in this specification manual must by regulation be installed by licensed and registered trade people. The manufacturer/distributor reserves the right to vary specifications or delete models from their range without prior notification. Dimensions and set-outs listed are correct at time of publication however the manufacturer/distributor takes no responsibility for printing errors.

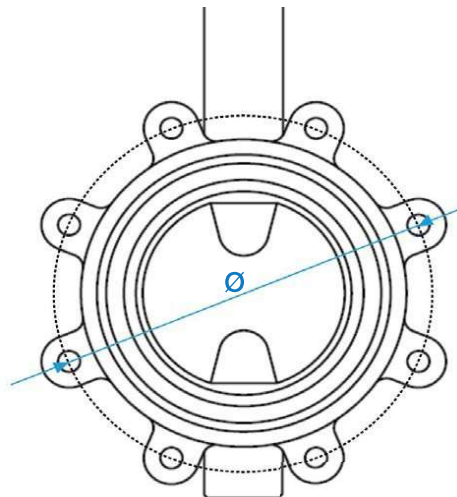
HVAC Gear Operated Lugged Butterfly Valve

DN 50-300 Non-Potable Water

Top Flange Dimensions							
Size DN	ϕA	B	C	ϕE	ϕF	N- ϕG	T
50	12.7	3	28	65	50	4- $\phi 7$	13.9
65	12.7	3	28	65	50	4- $\phi 7$	13.9
80	12.7	3	28	65	50	4- $\phi 7$	13.9
100	15.88	5	28	90	70	4- $\phi 9.5$	17.9
125	19.05	5	28	90	70	4- $\phi 9.5$	21.05
150	19.05	5	28	90	70	4- $\phi 9.5$	21.05
200	22.23	5	38	125	102	4- $\phi 11.5$	24.2
250	28.58	8	38	125	102	4- $\phi 11.5$	31.6
300	31.75	8	38	125	102	4- $\phi 11.5$	34.8



Pitch Circle Diameter (ϕ)	
Size DN	Pitch Circle Diameter (ϕ) mm
50	114
65	127
80	146
100	178
125	210
150	235
200	292
250	356
300	406



Handwheel (Spare Part)			
Code	Description	Size DN	Weight kg
1103491	DURA IND HW SUIT B/FLY GBOX 50-80MM	50-80	0.75
1103492	DURA IND HW SUIT B/FLY GBOX 100MM	100	0.75
1103493	DURA IND HW SUIT B/FLY GBOX 125-150	125-150	0.75
1103494	DURA IND HW SUIT B/FLY GBOX 200MM	200	2.5
1103495	DURA IND HW SUIT B/FLY GBOX 250MM	250	2.5
1103496	DURA IND HW SUIT B/FLY GBOX 300MM	300	2.5



Disclaimer: Products in this specification manual must by regulation be installed by licensed and registered trade people. The manufacturer/distributor reserves the right to vary specifications or delete models from their range without prior notification. Dimensions and set-outs listed are correct at time of publication however the manufacturer/distributor takes no responsibility for printing errors.

DURA
INDUSTRIAL