

HEAVY DUTY GAS



GAS

260L
275L

CAPACITY

51 MJ/hr
200 MJ/hr

INPUT

5
YEAR

CYLINDER
WARRANTY¹⁸

Indoor or
Outdoor

INSTALLATION

Everhot Heavy Duty Gas is a robust commercial water heater range designed to provide between 380 and 970 litres of hot water in the first hour and 190 to 750L/hr recovery hour after hour at 50°C temperature rise.

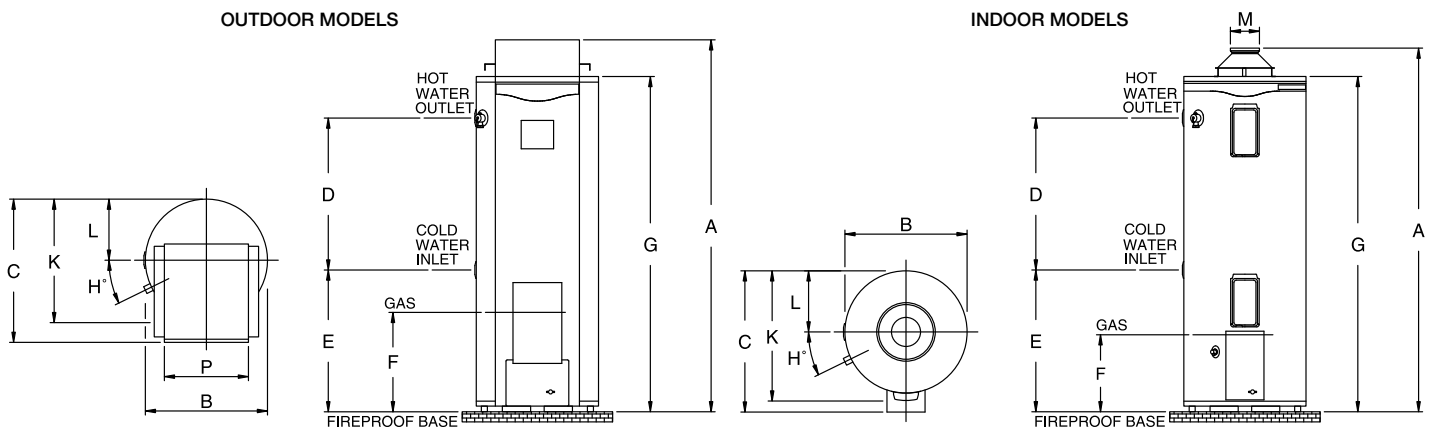
FEATURES

- Available in the most popular capacities of 260L / 51MJ/hr input and 275L / 200MJ/hr input
- Indoor and outdoor natural gas models available
- Direct replacement for the most popular heavy duty gas models
- Heavy duty enamel and multiple anodes¹⁹ provide long service life
- Indoor 275 model has automatic flue damper reducing heat loss by up to 60% compared to AGA maximum allowance
- Hot surface ignition on 275L models
- 82°C capable for sanitising applications on 275L models
- Manifold multiple units together for greater capacity and output
- Mains pressure
- Made in Australia
- 5 year cylinder warranty¹⁸
- Full warranty support through a comprehensive national service network



SPECIFICATIONS		OUTDOOR MODELS		INDOOR MODELS	
Everhot Heavy Duty Gas	Model	632260	632275	622260	622275
Storage Capacity	litres	260	275	260	275
Thermal Input (natural gas)	MJ/hr	51	200	51	200
Recovery @ 50°C rise	L/hr	190	750	190	750
First Hour Delivery	L	380	970	380	970
Water Hot and Cold Connections	BSPF	Rp 1¼	Rp 1¼	Rp 1¼	Rp 1¼
Gas Connection	BSPF	Rp ½	Rp ¾	Rp ½	Rp ¾
T&PR Valve Connection	BSPF	Rp ¾	Rp ¾	Rp ¾	Rp ¾
T&PR Valve Setting	kPa	1000	1000	1000	1000
ECV	kPa	850	850	850	850
Max. Water Supply Pressure					
without ECV fitted	kPa	800	800	800	800
with ECV fitted	kPa	680	680	680	680
Max. Thermostat Setting	°C	65	82	65	82
Min. Thermostat Setting	°C	off	60	off	60
Electrical Connection		-	2m 10A plug and lead	-	2m 10A plug and lead
Electrical Rating 240V 50Hz		-	250 Watts / 1.1 Amps	-	150 Watts / 0.65 Amps
Maintenance Rate	MJ/day	30.7	50.7	33.9	26.1
Dimensions					
A	mm	1640	1865	1660	1895
B	mm	590	640	590	640
C	mm	680	780	670	780
D	mm	990	760	990	760
E	mm	330	700	330	700
F	mm	295	340	297	340
G	mm	1520	1695	1520	1695
H	degrees	27	36	27	36
K	mm	655	722	655	722
L	mm	295	320	295	320
M	mm	-	-	100	200
P	mm	420	320	-	-
Approx. Weight (inc. packaging)	kg	112	170	102	161

Technical data is subject to change.



- 18. Warranty: 5 Year cylinder warranty, 1 Year parts and labour on all other components in commercial installations. Conditions apply. See the Everhot warranty set out in the Owner's Guide and Installation Instructions or view online at www.reece.com.au/Everhot
- 19. Black anode suitable up to 600mg/L Total Dissolved Solids only available

