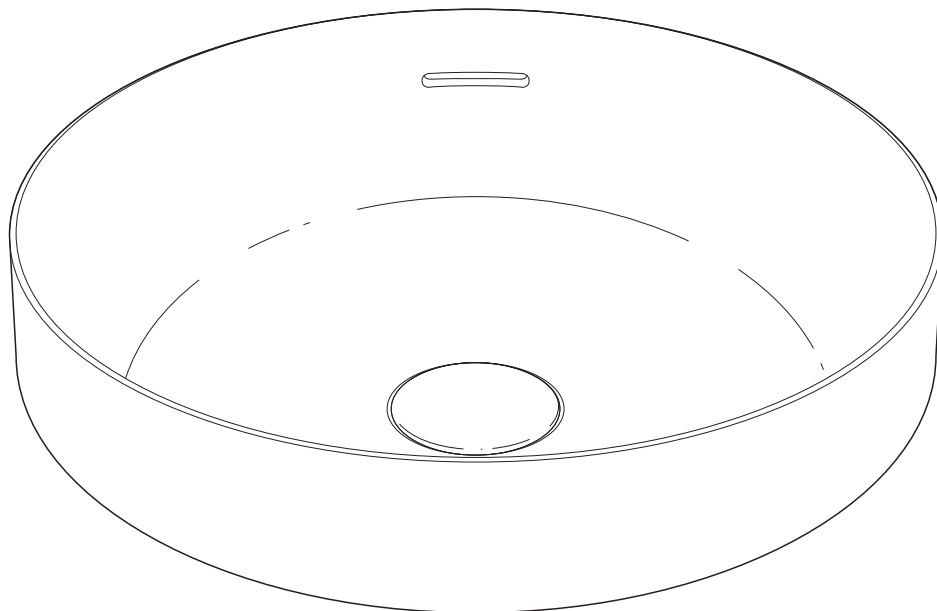


KADO

Lussi Thin Round Semi Inset Basin 380mm (No Taphole)



Pre-Installation Check



Please unwrap the basin and check it carefully to ensure it has not been damaged in handling or transport.



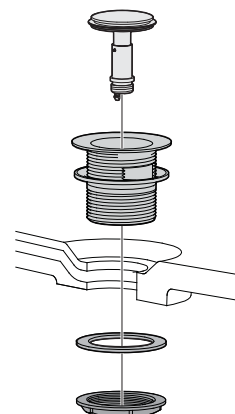
Basin must be installed to the requirements of AS/NZS 3500 by a qualified plumber



If using wall mounted tapware, please take into consideration the length of the outlet to the position of the Basin on the Benchtop.
If the Tapware is to be bench mounted, allow suitable bench top width for fitting the tapware.

Waste Assembly

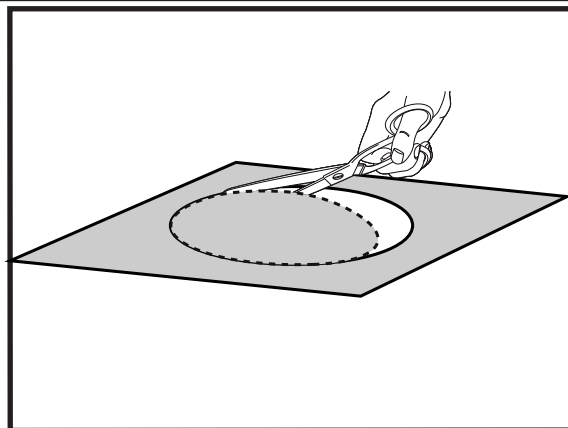
1. Fit the supplied (40mm) solid surface overflow pop up waste plug to basin.



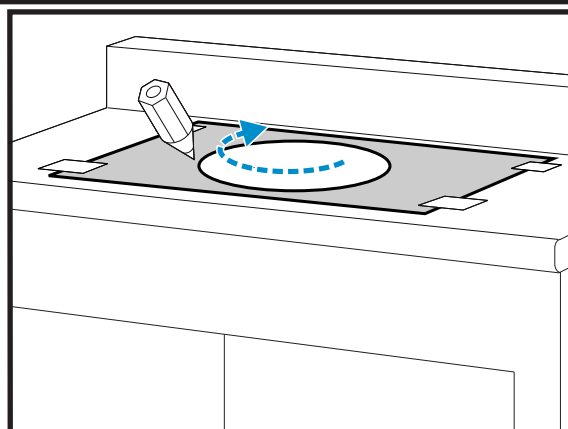
KADO

**Lussi Thin Round Semi Inset Basin 380mm
(No Taphole)****Installation**

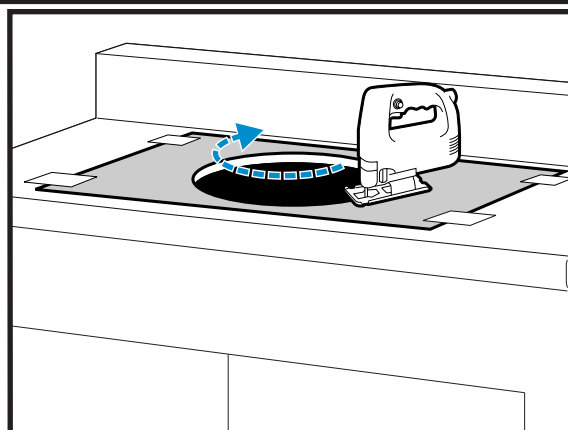
2. Cut out marked section on supplied Template.



3. Position supplied cut out Template onto the bench top and mark off.



4. Cut hole in bench top to Template size.

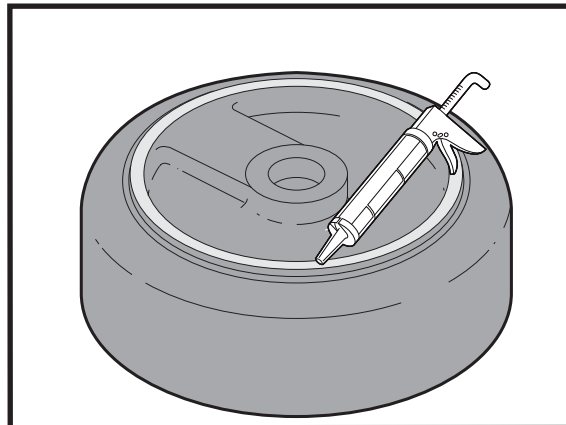


KADO

Lussi Thin Round Semi Inset Basin 380mm (No Taphole)

5. Apply waterproof sealant (not supplied) to the rim of the basin and to the bench top.

Note: Use non-acetic neutral cure sealant.

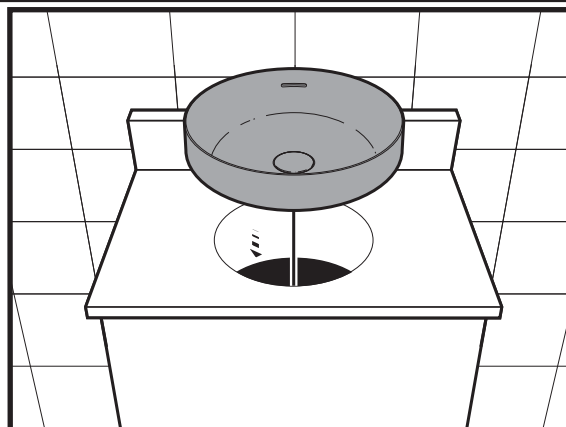


6. Fit basin onto the bench top and press firmly all around to achieve good seal. Ensure it is positioned evenly.

7. Remove surplus sealant.

Note: Do not use for 24 hours, allow silicone to dry or refer to instructions as per manufacturer of sealant.

8. Once all plumbing has been done fill basin and check for any leaks.



Care Details

Care and Maintenance

- For general cleaning use soapy water or an approved cleaner for solid surfaces.
- For a deeper periodic clean, to maintain the matte surface use the Kado Solid Surface Care Maintenance Kit (can be purchased separately).
- When marks or dirt appear on the surface that general cleaning does not fully remove, the solid surface Cleaning and Maintenance paste can be used, wipe any residue from surface and finish off by wiping and drying with soft clean cloth. Can also use fine sandpaper 1500-2000 grit to remove minor scratching or stubborn residue stains.
- Damage caused by any improper treatment is not covered by the product warranty. Refer to Warranty Conditions.

Plumbers, please ensure a copy of the installation instruction is left with the end user for future reference.

