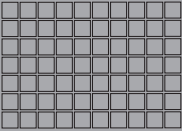
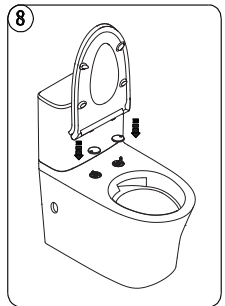
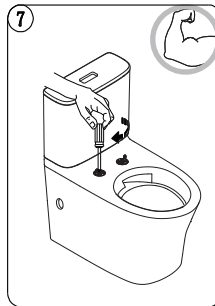
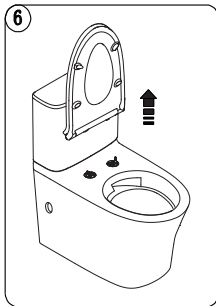
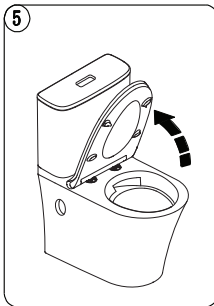
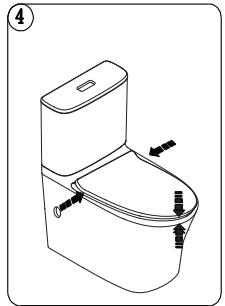
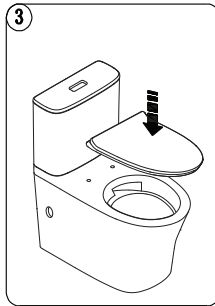
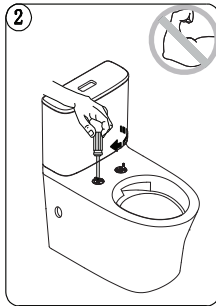
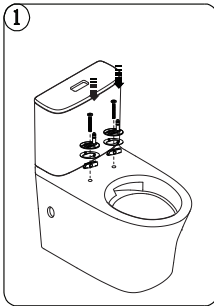
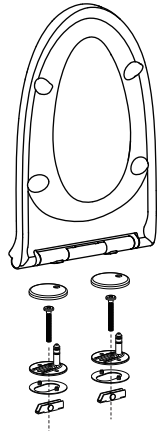


SIGNATURE SEAT & COVER
CL6155M-6D

American Standard



Seat and Cover Installation Manual



Warning: Do not stand or place heavy objects on the seat cover. Do not use inappropriate cleaners (toilet cleaner, residential cleaner, bleach, benzene, paint thinner, cleaning powder, cresol or any other strong acid and strong alkali, ect corrosive solution) to clean the seat cover or hinge base. Wipe seat and cover with the wet and soft cloth that is wrung dry. Keep children out of the seat, to avoid body injury. Do not open/close the seat and cover using excessive force. Do not expose the product to direct sunlight.

Note: The hole at back of the seat cover is for the production process constraint, not a defect