



# Grease Trap Brochure

## Sizes from 50L to 10,000L





## GRAF - Setting standards in quality

For 50 years, Otto GRAF GmbH has been offering high-class plastic products to its customers. In 1974, GRAF developed its first pioneering range of rainwater harvesting products. Today we are market leaders in numerous countries for rainwater harvesting systems.

### High Quality Manufacturing

GRAF is investing continuously in the expansion of the headquarters in Teningen near Freiburg (Breisgau). The facility has now an approximate area of 155,000 m<sup>2</sup> and is one of the most modern production facilities for plastic products in the world. Our choice of Germany for the new production site was easy. On one hand, we feel an obligation to the site because of our history. On the other, we would like to offer our customers products of the highest quality.

### Where Quality comes from

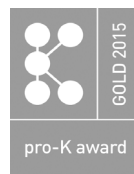
To ensure consistent high product quality, you need optimised production processes and outstanding quality management. Every individual tank at the new production site in Teningen is checked for dimensional accuracy, wall thickness and weight. All production parameters, e.g. material composition, machine settings and staff involved in the production process, are documented for each individual product.

### Our Goal: Your Satisfaction

More than 100,000 satisfied customers already benefit from the advantages of GRAF rainwater harvesting systems.



Manufacturing certified according to ISO 9001





## High Quality Manufacturing

**Our products have to satisfy a huge number of different requirements, which is why GRAF is an expert in all the common procedures for manufacturing plastic products and has access to the optimum manufacturing process for every product.**

### Ecological Products from the technology leader

GRAF uses state-of-the-art production facilities. This is the only way to guarantee superlative quality at attractive prices. GRAF broke new ground by using injection embossing to make the Carat underground tank. To manufacture this tank, the company developed and constructed the world's largest injection moulding machine.

### Durable and 100% recyclable

Right from the product development

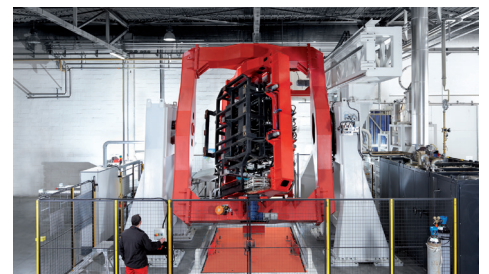
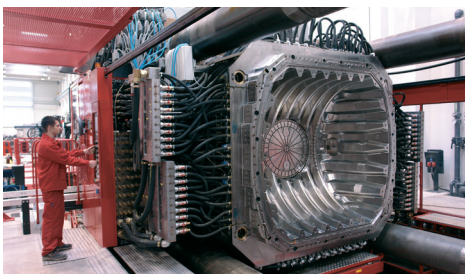
stage, GRAF attaches great importance to durable design. Long product lives ensure that fewer resources are used and the environment impact is minimised. All products manufactured by GRAF are also 100% recyclable.

Some products are also made from recycled materials- yet another boost to the environmental credentials of the GRAF product range. This means that not only do GRAF products protect the environment during use but their manufacturing process is also ecologically sound.

### Sustainable production process

While GRAF products help protect the environment, they are also manufactured in an environmentally-sound way. For example, the injection moulding process consumes up to 85% less energy than normal.

The heat generated during manufacturing is processed by a modern heat recovery system and is used to heat the production and logistics building.



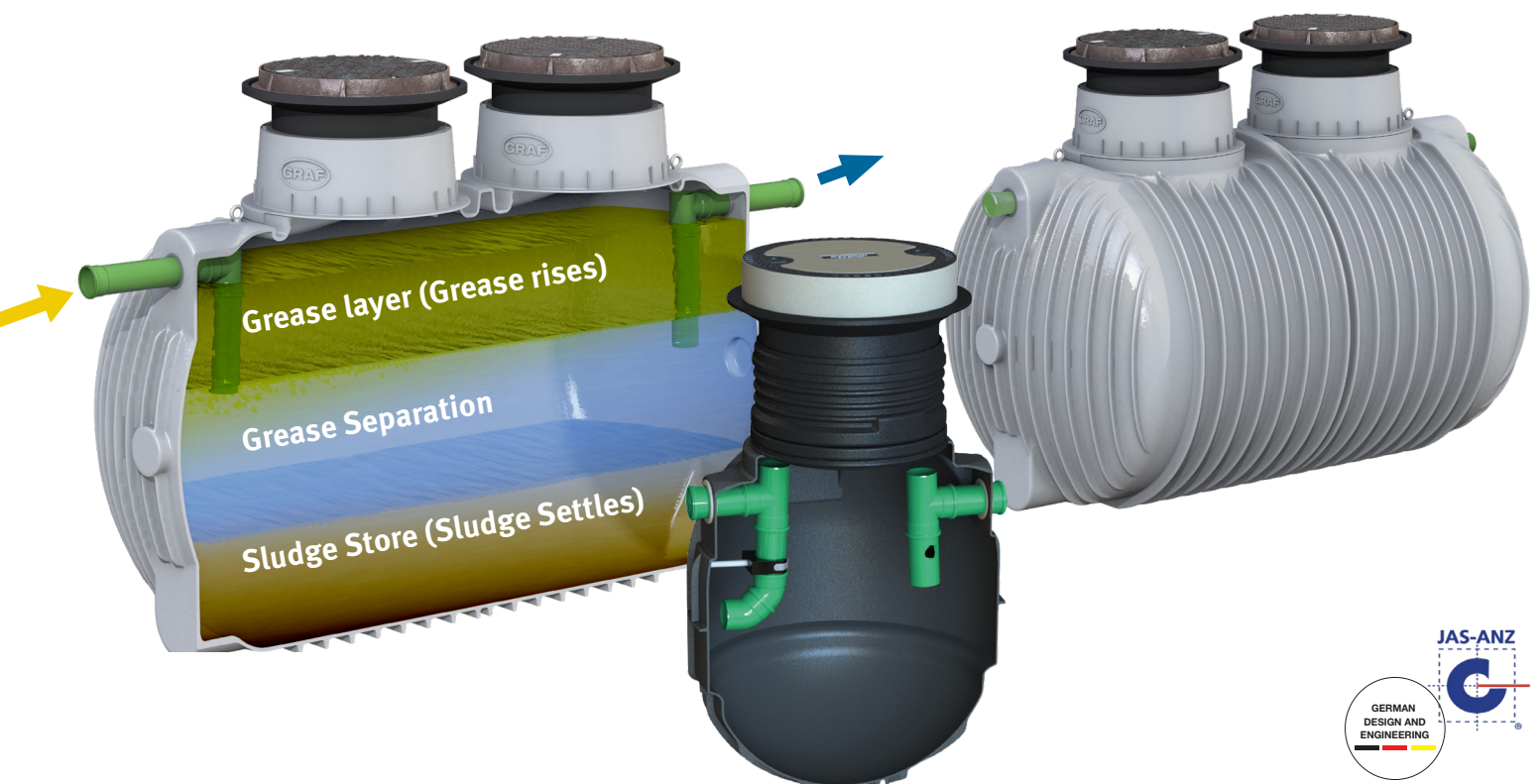
# Grease Trap - Overview



Businesses that discharge wastewater containing Fats, Oils and Grease (FOG), are required to install a grease separator before discharging into the sewer line. If left untreated, wastewater containing high levels of FOG can cause damages to the sewer infrastructure including wastewater treatment plants.

A passive grease separator works on the basis of phase separation. Fats and oils have a lower

density than water thus they will float on the surface. Solids which instead have a higher density than water, will sink at the bottom of the separator. Once the FOG are removed, the wastewater flows to the sewer line. The grease separator must be sized appropriately to allow sufficient separation time, please refer to your local water authority or council for details.



# Grease Trap - Product Features & Benefits

## — Telescopic Covers

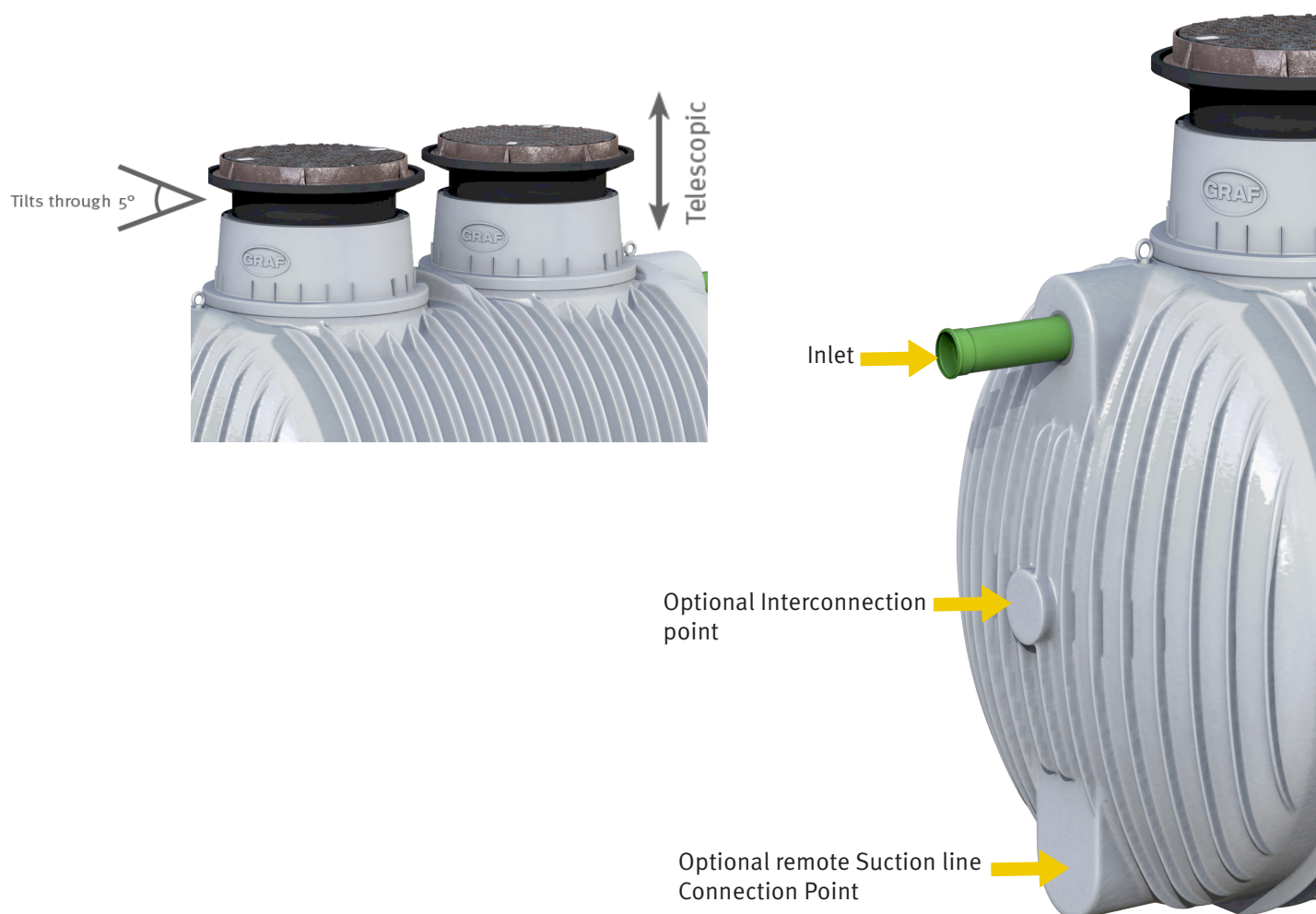
- The signature GRAF lids come with up to 300mm of extension
- Adjustable between 140mm - 440mm
- 5 degree tilt to finish flush with the ground level
- Additional 300mm extension if necessary - Product Code 1908906

## — Tank Features

- Designed with a stable base to ensure safety onsite during installation
- Delivered the correct way up reducing the time, costs, and health & safety risk of rotating a unit up to 275kg while suspended from an excavator or crane
- Remains in the desired position and does not roll during the backfill and compaction of the excavation
- Smooth Internal surface for ease of maintenance with optional remote suction line
- Mid-connection points for interconnecting tanks for larger volumes
- Lower connection for remote suction

## — Approvals

- Approved with major municipalities and local councils around Australia
- Lids compliant to AS 3966
- Rotomolded polyethylene tanks certified to AS/NZA 1546:1
- 10 year warranty
- Watermarked Fittings
- Structural integrity assessed using FEA



\*For all instruction details including venting connection, please refer to our installation instructions supplied with the product.

# Grease Trap - Sizing Guide



## Undersink Grease Trap

Tank Volume (l)*	DN (mm)	Length (mm)	Width (mm)	Height (mm)	Inlet Invert Level (mm)**	Weight - kg (without cover)	Reece Code
50	50	520	355	530	155	3.6	1910660
85	50	600	410	610	160	5.7	1910661

\*Effective Tank Volume

\*\*Dimensions can be increased with a 300mm extension riser



## Sapphire

Tank Volume (l)*	DN (mm)	Diameter (mm)	Height (mm)	Inlet Invert Level (mm)**	Weight - kg (without cover)	Class B	Class D
600	100	1125	1490 - 1690	705 - 905	41	1963006	1963011
900	100	1155	1790 - 1990	790 - 990	70	1963007	1963012
1000	100	1155	2110 - 2310	790 - 990	100	1963008	1963013
1500	100	1,155	2425 - 2625	747 - 947	98	1963029	1963030

\*Effective Tank Volume

\*\*Dimensions can be increased with a 300mm extension riser



## SC Grease Trap

Tank Volume (l)*	DN (mm)	Length (mm)	Width (mm)	Height (mm)	Inlet Invert Level (mm)**	Weight - kg (without cover)	Class B	Class D
2,000	100	3,000	1,180	1,475 - 1,775	670 - 970	193	1963051	1963057
3,000	100	3,000	1,415	1,715 - 2,015	670 - 970	240	1963052	1963058
4,000	100	3,000	1,565	1,880 - 2,180	650 - 950	236	1963053	1963059
5,000	100	3,000	1,735	2,045 - 2,345	685 - 985	306	1963054	1963060
8,000	100	3,490	2,240	2,650 - 2,950	780 - 1080	446	1963055	1963061
10,000	100	3,490	2,240	2,650 - 2,950	750 - 1050	446	1963056	1963062

\*Effective Tank Volume

\*\*Dimensions can be increased with a 300mm extension riser

# Grease Trap - Accessories

## Trafficable Tank Covers

Class B and D solid lids available, all gas and water tight as per AS 3996.

**Class B**  
Solid Lid



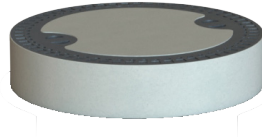
1909450

**Class D**  
Solid Lid



1909452

**Class B/D**  
Concrete Infill Lid



\*POA

## Accessories



**GA-1 Warning System**  
for grease level (service due),  
Incl. 10m electric cable

1910663



**GA-2 Warning System**  
for grease level (service due),  
and high level (overflow alarm),  
Incl. 5m electric cable

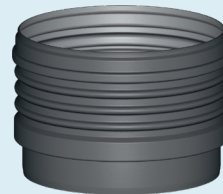
1910664



**Internal High Pressure Cleaning Kit**

Set of spray nozzles fit to the tank which can be plumbed to the main water supply for cleaning the internal surface of the arrestor

\*POA



**Extension Riser**  
max of 300mm for use  
in areas of deep sewer  
pipework

1908906

### Remote Suction Pipe Kit

Bottom connection with seal including  
cam lock fitting

\*POA



Contact your nearest Reece store for more information.  
Make sure you check out other available GRAF products.

RAINWATER	STORMWATER	WASTEWATER	TRADEWASTE
 <p>Platin (1,500l - 5,000l)</p>	 <p>XR Pump Station (600l - 10,000l)</p>	 <p>XR Pump Station (600l - 10,000l)</p>	 <p>Undersink Grease Trap (50l - 85l)</p>
 <p>Platin XL (7,500l - 10,000l)</p>	 <p>Platin XL (15,000l - 25,000l)</p>	 <p>Septic System (2,700l - 6,500l)</p>	 <p>Grease Trap (600l - 1,500l)</p>
 <p>Carat (2,700l - 6,500l)</p>	 <p>Storm Bloc</p>	 <p>Infiltration Tunnel (130l - 300l)</p>	 <p>Oil Trap (600l - 10,000l)</p>
 <p>Carat XL (8,500l - 10,000l)</p>	 <p>Channel Drain (100mm, 150mm, 200mm)</p>	<p><b>Don't risk it, use a licensed plumber.™</b></p> <p> <b>GRAF Australia</b>            1300 131 971            info@grafaustalia.com.au            www.grafaustalia.com.au  <b>Australasian Head Office</b>            43B Sparks Road, Henderson WA 6166  <b>Melbourne Depot:</b>            1/965 Duncans Rd, Werribee South VIC 3030         </p>  	

**GRAF Australia Pty Ltd.**

- Head Office  
43B Sparks Road,  
Henderson WA 616

**Distribution Centres**

- Unit 1/ 10 – 12 Claude Boyd  
Parade, Bells Creek, QLD 4551
- 1/965 Duncand Road,  
Werribee South, VIC 3030

info@grafaustalia.com.au  
www.grafaustalia.com.au

Tel.: +61 1300 131 971  
Fax.: +61 (08) 6499 2688