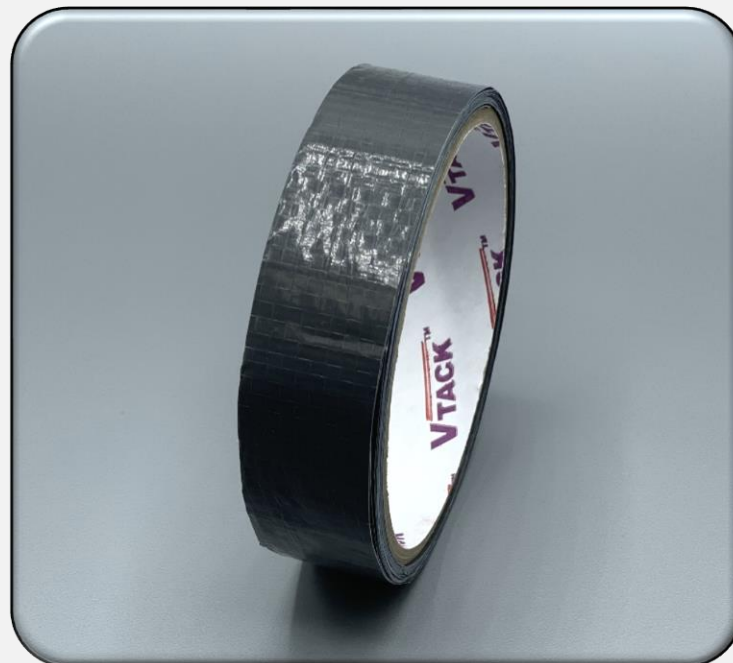


DESCRIPTION:

4025 VTACK™ Duct Hang Strap is manufactured from a premium grade only 100% Polyethylene Fiber, constructed with a strong 9 x 9 weave and for extra strength coated with a tough PE film on both sides. The 4025 is Fire Retardant, UV stable and will not fade in direct sunlight, it is waterproof, washable and mildew resistant. Ideal for supporting flexible duct work and all other ideal industrial applications. The 4025 Duct Support is fully compliant to the requirements of Australian standard AS1530.3-1999, for “Materials Fire Tests on Building Materials”.

**FEATURES & BENEFITS:**

- **AS1530.3 FIRE RATED COMPLIANCE**
- **Designed to support duct load**
- **Prevents shape duct distortion and sagging**
- **Hi-Tensile strength construction**

TECHNICAL DATA August 2022

	Unit	
Product Name		4025 DUCTSTRAP
Construction	p/25mm	9 x 9, 1000D, 100% PE Yarn
Weight (Base)	g/m ²	66
Coating Weight (per side)	g/m ²	34
Construction Total Density	g/m ²	134
Classification		Hi-Tensile
Finished Width	mm	25
Roll Length	mtr	50
Roll Outer Diameter	mm	125
Corona Treated	YES/NO	YES
Tensile Strength	kN/m	7.5 – Machine Direction 4.5 – Cross Direction
Edge Tear Resistance	kN/m	80 (min)
Presentation		Laminated Finish
Quality Control		No delamination allowed
Fire Retardant (when tested to AS/NZS 1530.3; Flammability Index = <5)		-PASS-
Product Form		Supplied 48 rolls p/carton

PRODUCT SIZE:

- Available in 25mm x 50m rolls

INSTALLATION INSTRUCTIONS:

- Intervals of installations to be no greater distance than 1.5mtr
- The maximum permissible sag between supports shall be 40mm/m of supporting spacing
- Wrap the 4025 Strap completely around the duct and suspend/support to building structure
- 4025 Strap must be in contact with the flexible duct for at least a quarter of its circumference
- Ensure the 4025 Strap is positioned under the duct flat & not twisted to evenly distribute the load
- 4025 Strap should be adequately attached to the building structure

The technical information, recommendations and other statements contained in this document are based upon tests or experience that AFC believes are reliable, but the accuracy or completeness of such information is not guaranteed. The information supplied herein is presented in good faith and believed to be accurate to the best knowledge of the supplier. It is also predicated on normal use of the product. However, since conditions of use are beyond our control, we make no warranties, expressed or implied as to the use of this information or to the suitability of product for a particular purpose. No deviation is authorised. E&OE.