

Movement by Perfection



The Royal League in ventilation, control and drive technology



[Product documentation](#)

Type  
FN050-VDQ.4I.V7P1

Article number  
142500

## Product documentation

Customer  
Actrol

Project  
Axial Fans

ZIEHL-ABEGG Contact  
Kenz Zacharias  
Tel. +61288832854  
kenz.zacharias@ziehl-abegg.com.au

ZIEHL-ABEGG Subsidiary  
Australia  
ZIEHL-ABEGG Australia Pty Ltd (VIC)  
181 Calarco Drive  
Derrimut  
VICTORIA 3030  
AUSTRALIA  
Phone +61 3 99310899  
Fax +61 3 99310499  
www.ziehl-abegg.com.au  
info@ziehl-abegg.com.au

Type  
FN050-VDQ.4I.V7P1

Article number  
142500



### Contents

1.	Product specification	3
2.	Characteristic Curve	4
3.	Drawing	5
4.	Connection diagram	6
5.	EU-Declaration of conformity	7

### 1. Product specification

#### Technical data

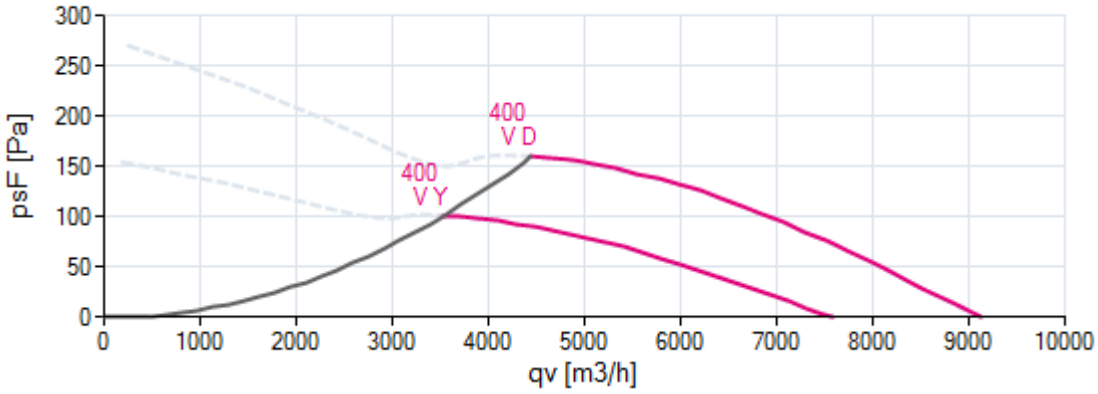
Article number	142500
Type	FN050-VDQ.4I.V7P1
Designation	Axial fan with sickle blades
Rated values	3~400V±10% D/Y 50Hz P <sub>1</sub> 0,84/0,54kW 1.45/ 0.96A ΔI=15% 1340/ 940/min COSY 0,80 70°C
Electrical connection	Terminal box K62
Min. operating temperature °C	-40***
Mounting type terminal box	Mounted on Stator
Type of protection	IP54
Thermal class	THCL155
Connection diagram	1360-108XA
Rating plate	1x fixed
Fitting position	H/Vu/Vo
Motor protection	thermal contact
Impregnation	Moisture and hot climate protection
Quality of bearings	ball bearing with long-time lubrication
Material Rotor	Aluminium
Painting rotor	Rotor 1 coat painted
colour rotor	RAL 7030 (stone grey)
Material blades	Aluminium
Painting impeller	1 coat painted
Colour blades	RAL 7030 (stone grey)
Guard grille type	ring grill
Control	--
Other	Balancing quality G 4,0
Painting housing	Bell mouth 1 coat paint
Colour housing	RAL 7030 (stone grey)
Painting mot.suspens	Motor suspension 1 coat paint
colour suspension	RAL 7030 (stone grey)
Weight kg	18,30
ErP Data	Efficiency $\eta_{statA}$ : 34,2 % Efficiency grade: $N_{actual} = 41,3 / N_{target} = 40^*$ *ErP 2015

\*\*\* Occasional operation  $\leq -20^{\circ}\text{C}$  and in consideration of lowest temperature according to product documentation permissible. For cooling applications with continuous operation  $\leq -20^{\circ}\text{C}$  cold design on request.

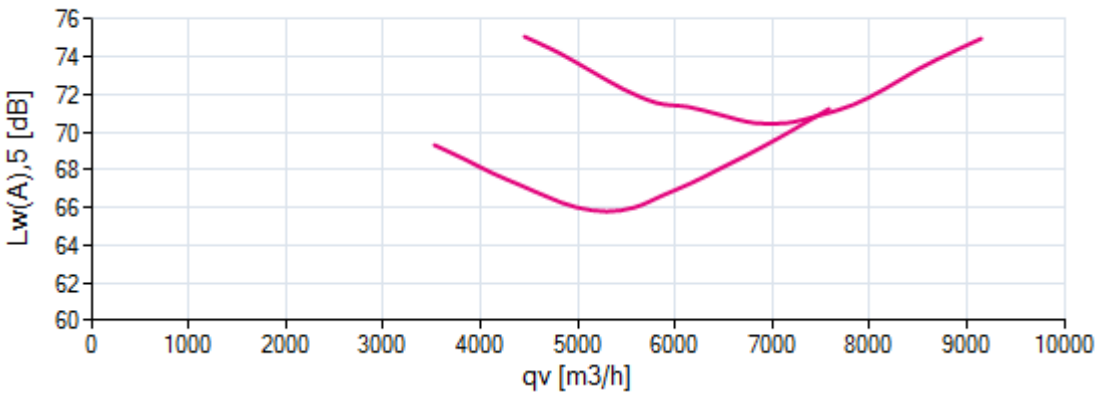
### 2. Characteristic Curve

FN050-VDQ.4I.V7P1 Gemessen in Volldüse ohne Berührschutzgitter in Einbauart A nach ISO 5801  
3~ 400V 50Hz D Messdichte 1,16

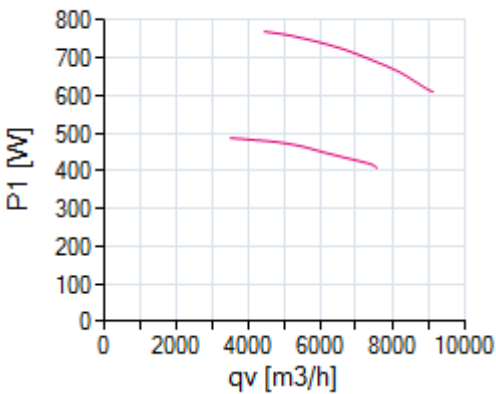
#### Air performance



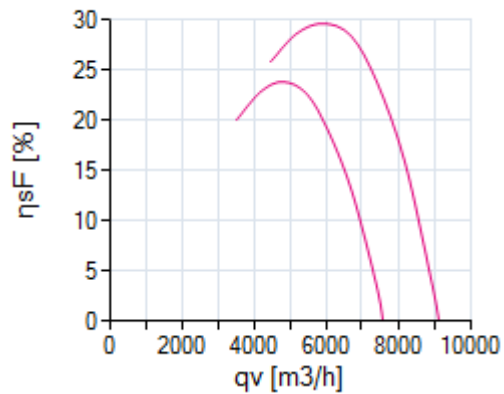
#### Acoustics



#### Power input



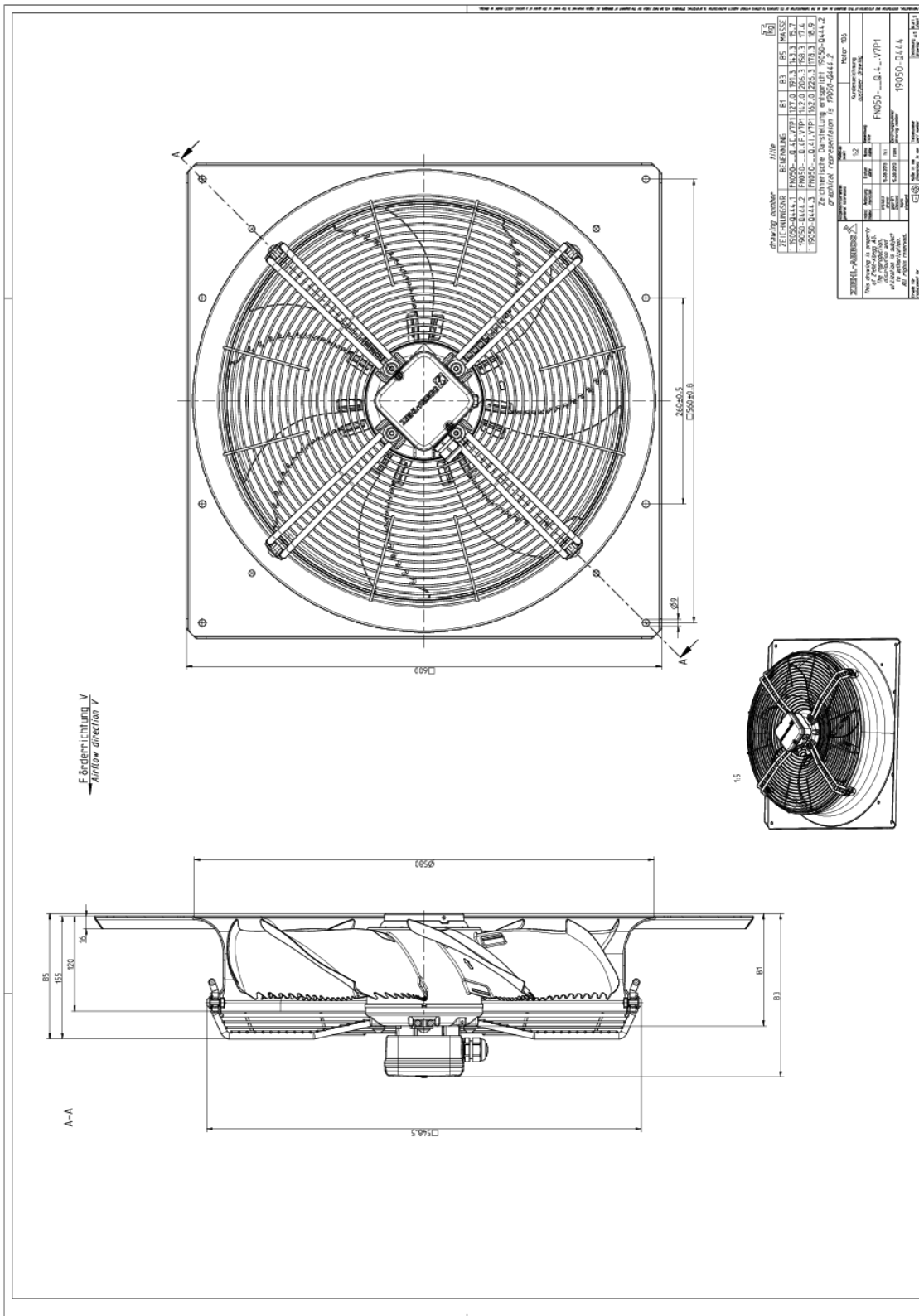
#### Efficiency



Please note: It's not allowed to use this fan in the stall area!\*

\*In doubt please ask your responsible ZIEHL-ABEGG sales contact.

### 3. Drawing



Dimensions in mm

Shown drawing is just to show the dimensions of the fan.

www.ziehl-abegg.com  
22/05/2019 12:51:04 PM

Movement by Perfection | Bewegung durch Perfektion

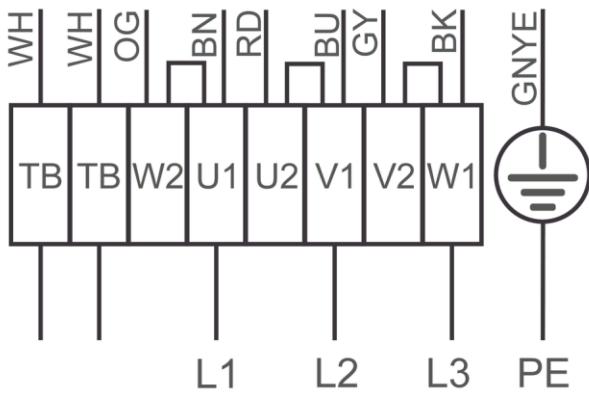
### 4. Connection diagram

#### 1360-108XA

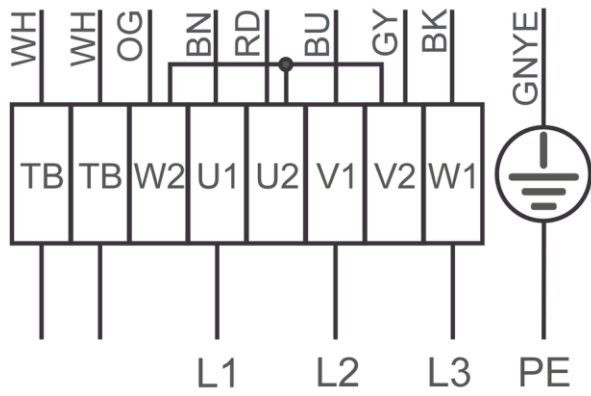
3~ motor, 2 speeds ( $\Delta/Y$  switch over) with thermostatic switch (if built in). Without bridge when using speed change-over switch.

- BN brown
- BU blue
- BK black
- RD red
- GY grey
- OG orange
- WH white
- GNYE green-yellow

High speed/D-connection



Low speed/Y-connection



## 5. EU-Declaration of conformity

### EC-Declaration of conformity

- Translation -  
(english)

ZA75-GB 1616 Index 011  
00285644-GB

**Manufacturer:** ZIEHL-ABEGG SE  
Heinz-Ziehl-Straße  
74653 Künzelsau  
Germany

**The manufacturer is solely responsible for issuance of the declaration of conformity.**

#### The products:

- External rotor motor MK..., MW..
- Axial fan FA..., FB..., FC..., FE..., FF..., FS..., FT..., FH..., FL..., FN..., FV..., DN..., VR..., VN..., ZC..., ZF..., ZN..
- Centrifugal fan RA..., RD..., RE..., RF..., RG..., RH..., RK..., RM..., RR..., RZ..., GR..., ER..
- Cross-flow fan QK..., QR..., QT..., QG..

#### The engine type:

- Asynchronous internal or external rotor motor
- Asynchronous internal or external rotor motor with integrated frequency inverter, except EDP system
- Electronically commutated (EC) internal or external rotor motor
- Electronically commutated internal or external rotor motor with integrated EC Controller, except EDP system

#### These products comply with the following EU directives:

- EMC Directive 2014/30/EU
- Low voltage directive 2014/35/EU
- ErP Directive 2009/125/EC, in conjunction with Regulation (EU) no. 327/2011

#### The following harmonized standards are in use:

EN 60034-1:2010 + Cor.:2010                    EN 61000-6-3:2007 + A1:2011 + AC:2012  
EN 60204-1:2006 + A1:2009 + AC:2010                    EN 61000-6-2:2005 + AC:2005  
EN 60529:1991 + A1:2000 + A2:2013

Compliance with the ErP Directive 2009/125/EC does not refer to external rotor motors MK..., MW..

All ErP-relevant information comprises measurements which are determined using a standardised measurement set-up. More details can be obtained from the manufacturer.

Compliance with the EMC Directive 2014/30 / EU refers only to those products when they are connected by mounting / operating instructions. If these products are integrated into a system or supplemented with other components (eg. sensing controls) and operated, the manufacturer or operator is responsible of the overall system for compliance with the EMC Directive 2014/30 / EU.

Künzelsau, 20.04.2016  
(Location, date of issue)

ZIEHL-ABEGG SE  
Dr. W. Angelis  
Technical Director Air Movement Division  
(Name, Function)

(Signature)

**ZIEHL-ABEGG**



The Royal League in ventilation, control and drive technology

## Intelligent control technology for any application

**ZIEHL-ABEGG system capabilities:**  
Everything from a single source – perfectly matched for optimal performance

Please contact us. We would be pleased to design an individual solution for your requirements.

We would like to welcome you on our worldwide exhibitions. Please find our next exhibitions [here](#).