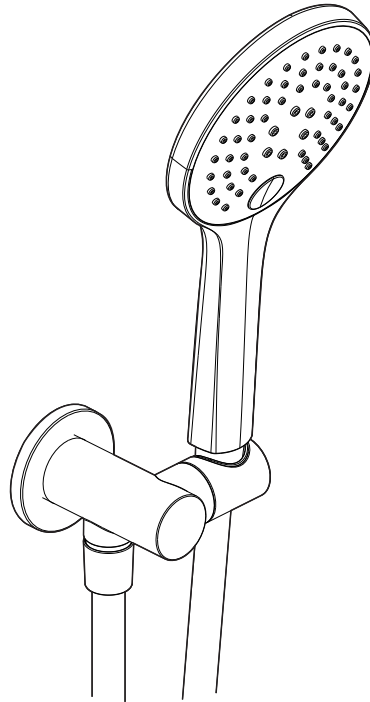
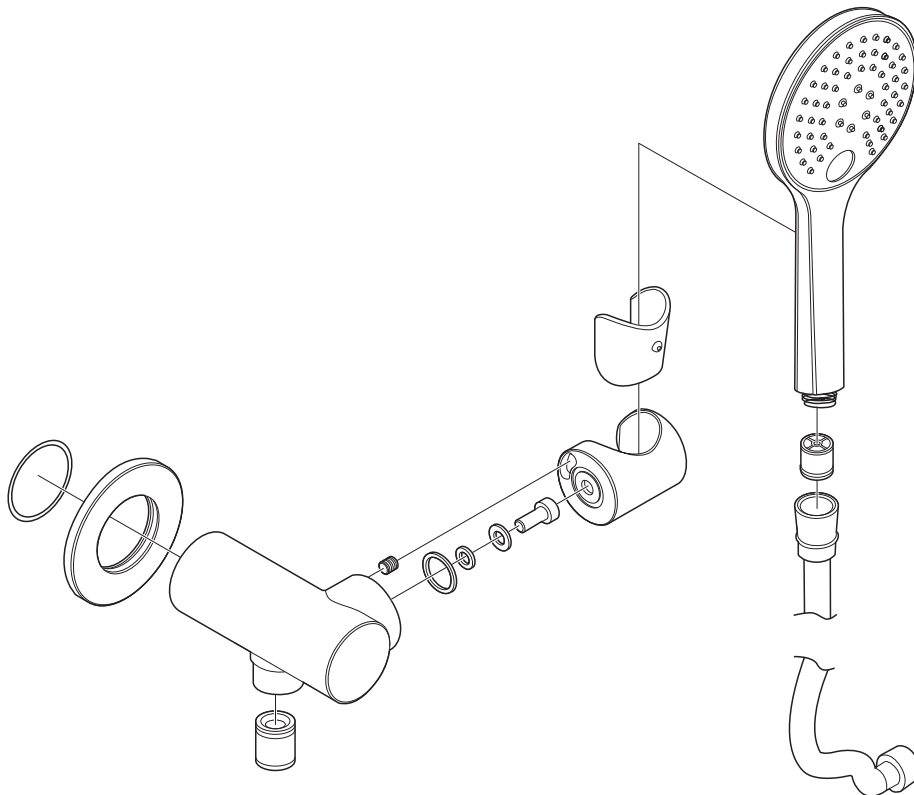


# mizu

## Mizu Drift Handshower With Water Inlet Wall Bracket (3\*)



### Diagram



### Installation Instructions



It is recommended that this product be installed by a qualified licensed plumber to AS/NZS 3500.

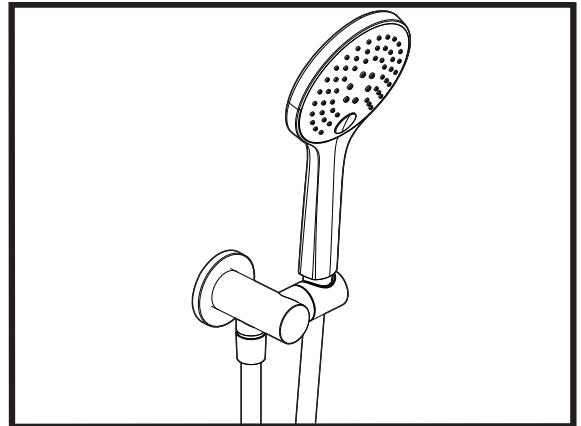
Installation



All connections must be checked for leaks and is the responsibility of the installer to ensure a waterproof seal has been achieved. Flush out new pipework prior to connecting the Handshower.



This Handshower is suitable for high pressure Storage Tank and Continuous Flow applications with a minimum operating pressure of 150kPa and maximum 500kPa. Not suitable for Gravity Feed Hot Water Unit applications.

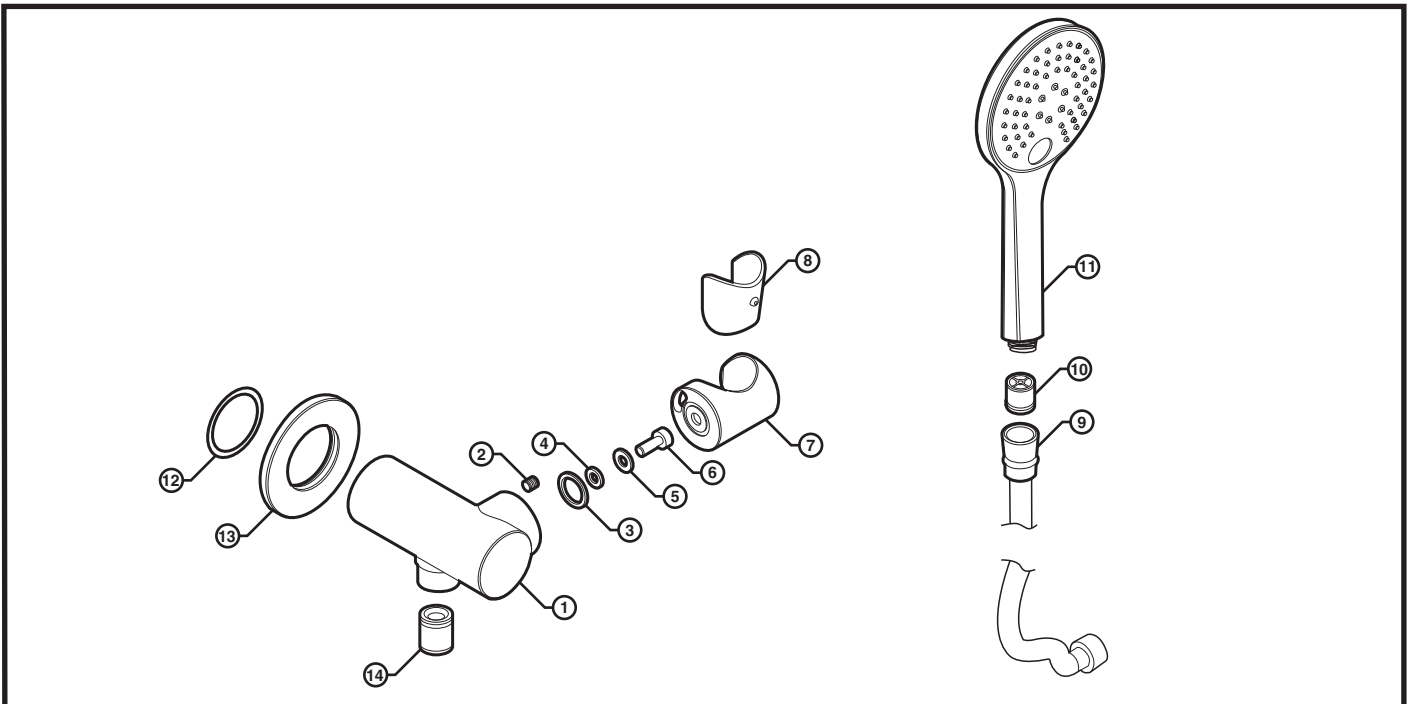


- If retrofitting, remove older shower and clean exposed thread
- Apply a thread sealant.

- **NOTE: Ensure that the male connection thread is no longer than 18±2mm off the finished wall.**
- Slide cover Plate (13) opening through the wall Elbow rear (1).
- Hand-tighten wall Elbow (1) to wall connection thread, ensuring that the hose connection faces downward.
- Connect the Hose (9) and Handpiece (11) using the washers supplied (Hand-tighten only).



Maximum hot Temperature 60°C, minimum 1°C.



Care Details

We recommend the use of soapy water or approved cleaners. This product should not be cleaned with abrasive materials. Damage caused by any improper treatment is not covered by the product warranty. Refer to Warranty Conditions

Plumbers, please ensure a copy of the installation instruction is left with the end user for future reference.

