

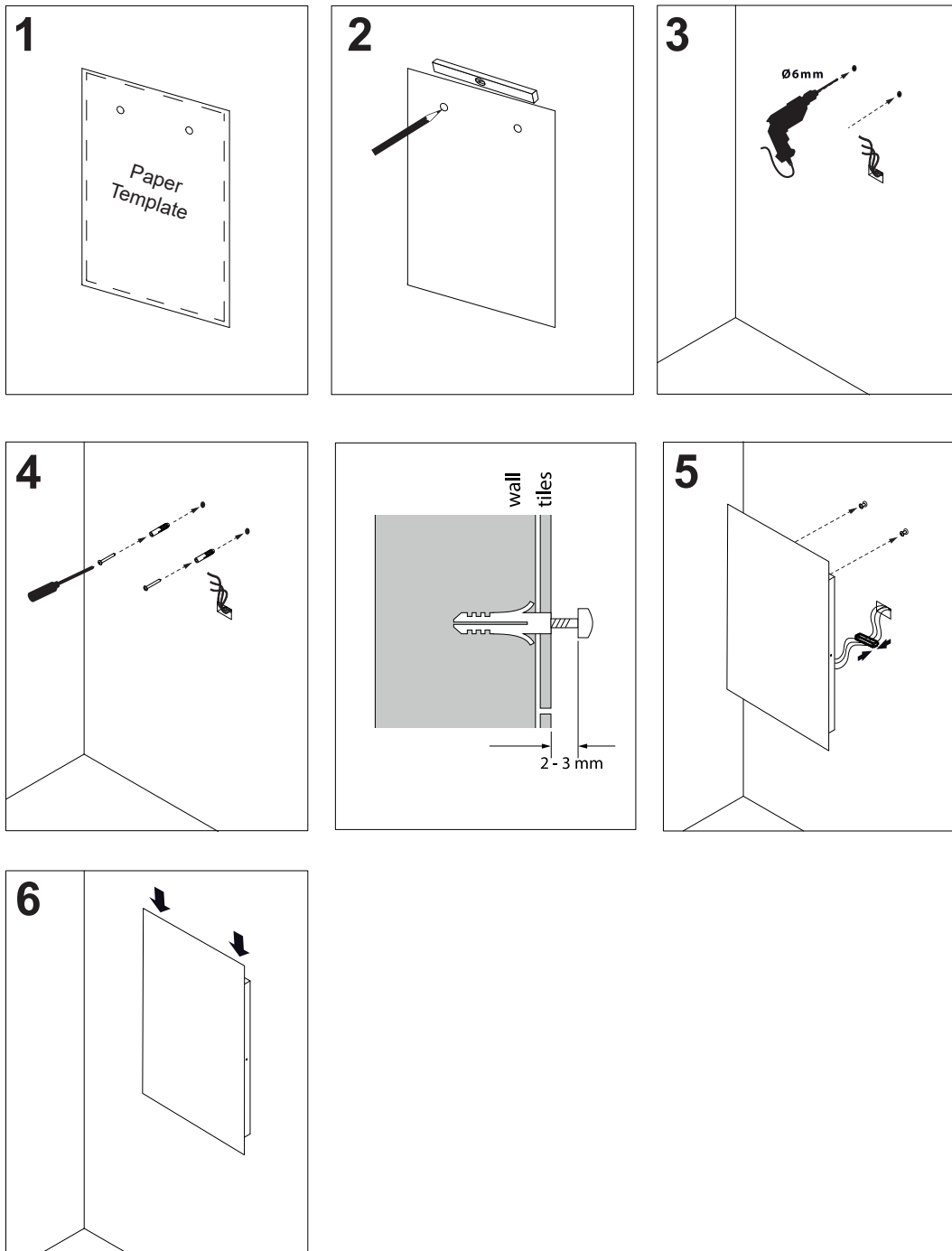


## KADO

## Kado Aspect Round LED Mirror 800

1. Place the included template to the back of the mirror to ensure the holes on the template match the mounting holes on the mirror.
2. Tape the supplied template to the wall taking in consideration the position of the mounting holes. With a spirit level, position template and mark each fixing point.
3. Ensure there are no water or electrical sources behind the fixing points and drill wall as per markings.
4. Insert screw anchors suited to the type of wall to which the mirror will be fixed. (Only screws in the case of wood studs)
5. Complete all required electrical connections in the included electrical junction box and hang the mirror on screws.
6. Place screws into the keyholes on the back of the mirror. Once all screws are positioned in keyholes, push mirror down to secure.

\*Diagrams are not to dimension or exact product shape, guide only



Please ensure a copy of the installation instructions is left with the end user for future reference