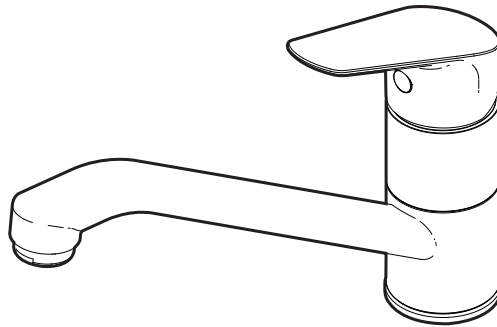


### Solus Sink Mixer (4 Star)



## Installation Instructions



**Mixer must be installed to the requirements of AS/NZS 3500 by a qualified plumber. Your mixer comes to you already factory assembled and tested. We do not recommend the dismantling of any internal part of the mixer. The mixers are factory tested and sealed so as to give the best performance.**



**Avoid prolonged exposure to any chemical solution containing chlorides or acids. Surface damage caused by acids will void warranty.**



**Do not use steel wool or any abrasive cleansers.**



**Clean with mild detergent or clear liquid cleansers. Wipe dry with a clean soft cloth.**



**All mixers should be installed with isolating stop cocks.**



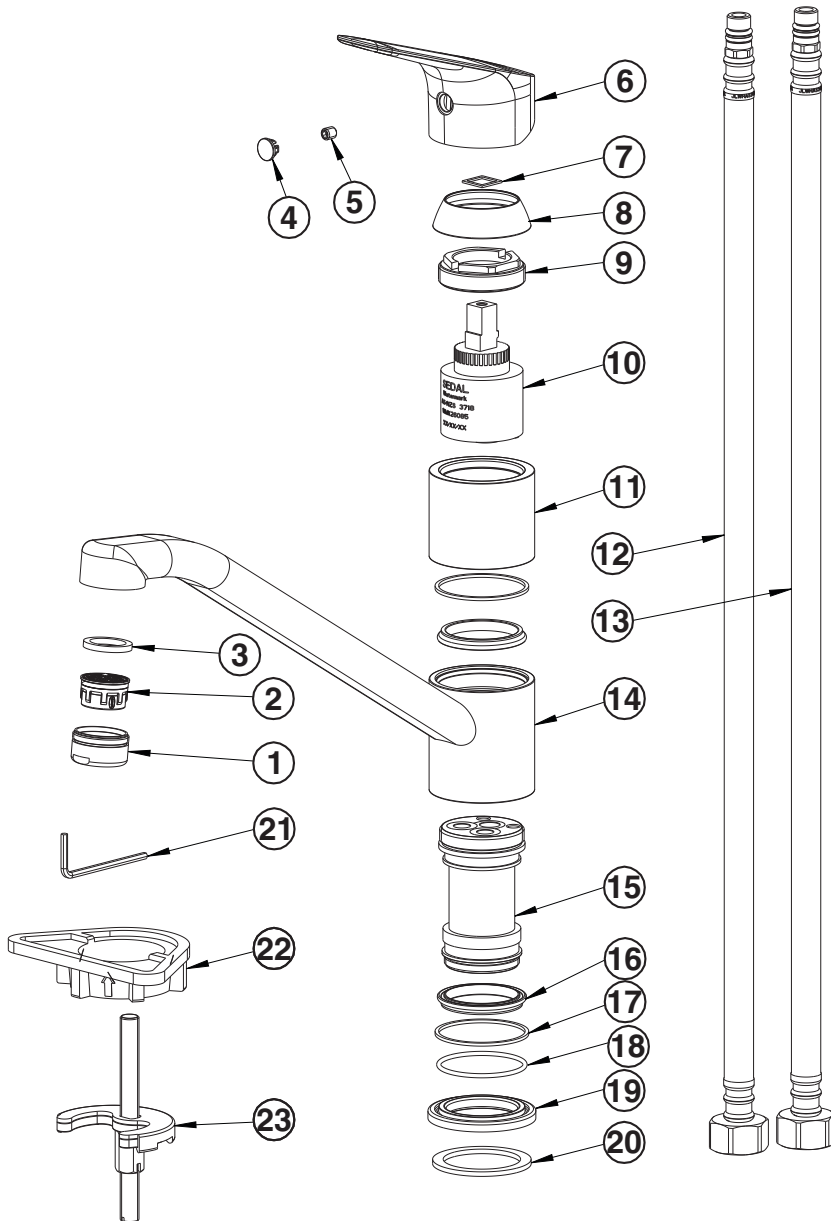
**Flush out new pipe work prior to connecting the new mixer.**

**Note: This tap is suitable for high pressure applications where both hot and cold water supply pressures are at 150kpa or above.**

1. Fit with isolating stops on both hot and cold water supply.
2. Attach flexible Mixer Tails (**12 & 13**) to corresponding hot and cold inlets on mixer Body (**15**).
3. Place base Dress Ring Washer (**20**) at base of Mixer Body (**19**).
4. Position mixer over tap hole and feed through Flexible Tails (**12 & 13**) one at a time.
5. From underneath, guide hot and cold flex hoses around horseshoe fixing plate from Fixing Kit (**23**). If installing directly onto stainless steel sink, feed through Stabiliser Support Plate (**18**) first. From underneath, fit horseshoe bracket and washer from Fixing Kit (**23**) onto threaded rod. Fit Hex nut from Fixing Kit (**23**) onto threaded rod.
6. From above, align mixer into final position. From underneath, fully tighten fixing hex nut till mixer is firmly secured into final position.
7. From underneath, screw flexi tail nuts onto corresponding hot and cold isolation valves until watertight seal is achieved. Refer below for precautions (Note -Isolation valves not included).
8. Turn on water supply and operate mixer. Check for leaks on any connections. Ensure that mixer is operating correctly.

**NOTE: Do not over tighten hose tail into the mixer, do not stretch the flexi hoses.  
Do not twist hose braiding to tighten hoses, do not excessively bend hoses.  
Do not use Teflon tape or thread locking compound on any of the threaded connections.**

### Solus Sink Mixer (4 Star)



Pt. #	Qty.	Description
1	1	Aerator Complete
2	1	Mixer Handle Complete
3	1	Plastic spacer Gasket
4	1	Cartridge Dome Cover
5	1	Cartridge Lock Nut
6	1	Cartridge 35mm
7	1	Spout Locking Sleeve
8	1	Flexible Mixer Tail (Hot)
9	1	Flexible Mixer Tail (Cold)
10	1	Spout
11	1	Manifold Body
12	1	Body O Rings and Washers
13	1	Dress Ring Pre-fitted
14	1	Dress Ring Washer
15	1	Allen Key
16	1	Stabiliser Support Plate
17	1	Fixing Kit

### Care Details

We recommend the use of soapy water or approved cleaners. This product should not be cleaned with abrasive materials. Damage caused by any improper treatment is not covered by the product warranty. Refer to Warranty Conditions

Plumbers, please ensure a copy of the installation instruction is left with the end user for future reference.