



WOLFEN

# INSTALLATION MANUAL

---

26138 Wolfen Care Plastic Link Suite White With Back Rest (4\*)

---

33091 Wolfen Care Plastic Link Suite Blue With Back Rest (4\*)

---

33092 Wolfen Care Plastic Link Suite Grey With Back Rest (4\*)

---

1832131 Wolfen Care Plastic Link Suite White (4\*)

---

26135 Wolfen Care Plastic Link Suite Blue (4\*)

---

26136 Wolfen Care Plastic Link Suite Grey (4\*)

---





**WOLFEN™**

# CONTENTS

Intro	03
Technical Information	04
Installation Instructions	05 - 10
Cleaning	10
Warranty	11

## Delivering unrivalled quality

Designed for absolute performance, Wolfen's Care Link Suite sets new standards in quality, hygiene and flushing performance. A box rim, raised height design combined with precision engineering and extended footprint ensures suitability for care and ambulant environments.

Available in blue, grey and white single flap seats, raised height buttons and fixed arm backrest (sold separately) to meet the requirements of AS1428.

The installation of this Toilet Suite shall be in line with the normal minimum requirements in AS/NZS 3500.2 and PCA Plumbing Code Australia as referenced in National Construction Code.

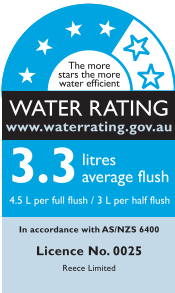
For installation reference must also be made to AS1428.1.2021 in regard to positioning, circulation space and for selection of colour in relations to luminance contrast.

Supplied flush pipe is suitable to meet AS 1428.1 and ambulant requirements with adjustment of the flush pipe.

For installation reference must also be made to AS1428.1.2021 in regard to positioning, circulation space and for selection of colour in relations to luminance contrast.

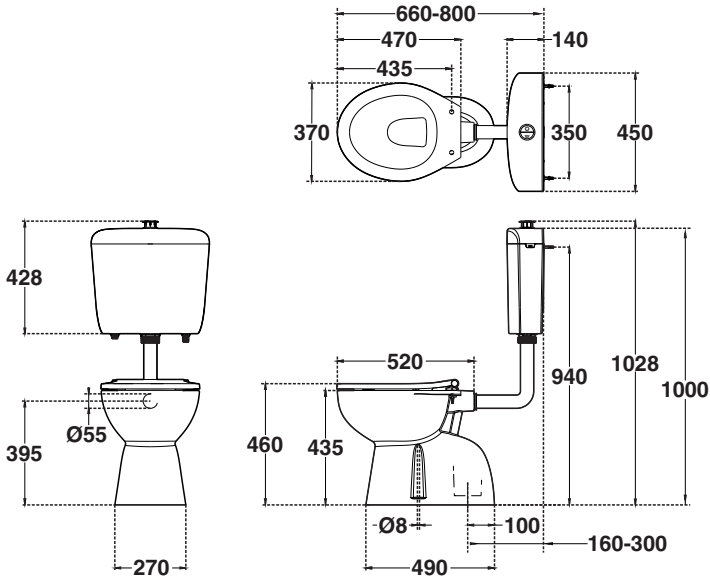
# TECHNICAL INFORMATION

Model	Wolfen Care Plastic Link Suite (4*)	Wolfen Care Plastic Link Suite With Back Rest (4*)
Product Code	1832131, 26135, 26136	26138, 33091, 33092
Material	Pan - Vitreous China Cistern - Vitreous China Seat - Urea Back Rest - N/A	Pan - Vitreous China Cistern - Vitreous China Seat - Urea Back Rest - 204 Stainless Steel & HDPE
Colour	Pan - White Seat - White, Blue, Grey	Pan - White Seat - White, Blue, Grey
Toilet Seat	Single Flap Seat	Single Flap Seat
Rim Configuration	Box Rim	Box Rim
Set Out (mm)	170 min - 300 max	170 min - 300 max
Inlet Valve Pressure	Max 500 kPa	Max 500 kPa
Buttons	Chrome raised height buttons	Chrome raised height buttons



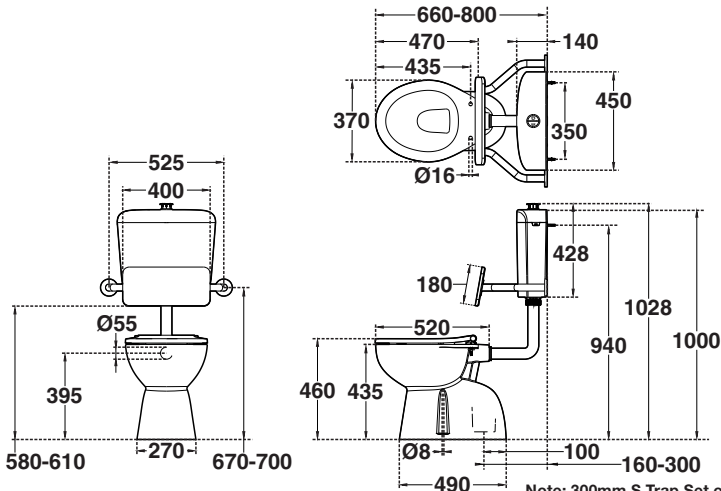
# INSTALLATION INSTRUCTIONS

## Wolfen Plastic Cistern Suite with Single Flap Seat (4\*)



Note: 300mm S Trap Set out to achieve required, 800mm overall projection as per AS1428.1 - Accessible

## Wolfen Plastic Cistern Suite with Single Flap Seat & Back Rest (4\*)

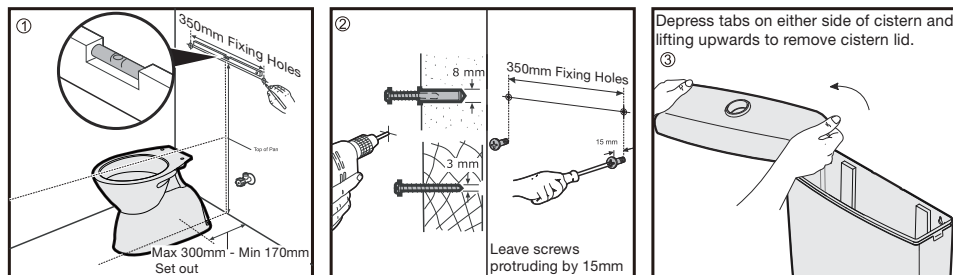


Note: 300mm S Trap Set out to achieve required, 800mm overall projection as per AS1428.1 - Accessible

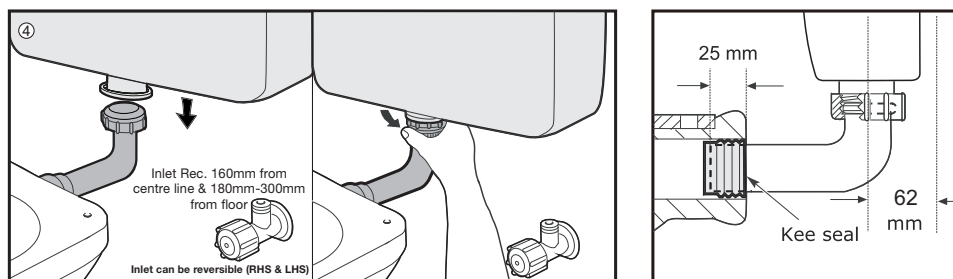
# INSTALLATION INSTRUCTIONS

**Note:** For timber stud and non-structural walls, the cistern should be fixed to a noggin or solid wall.

**Note:** Flush pipe and fittings are packed inside cistern.

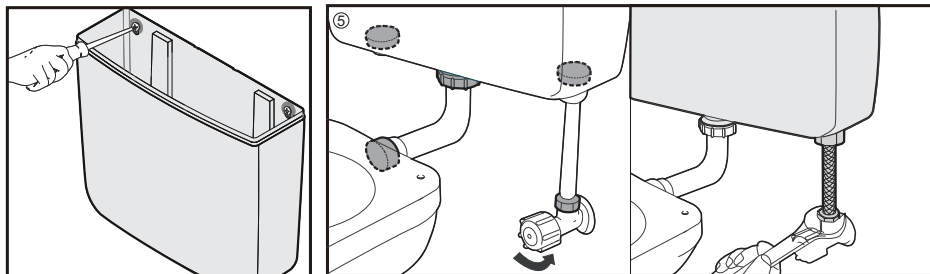


1. Check that the pan is installed within dimensional tolerances. Mark out the fixing holes for cistern.
2. In masonry, drill 8mm diameter holes and insert the plugs provided. In timber, drill 3mm diameter pilot holes.
3. Depress tabs on either side of cistern, lifting upwards to remove cistern lid.

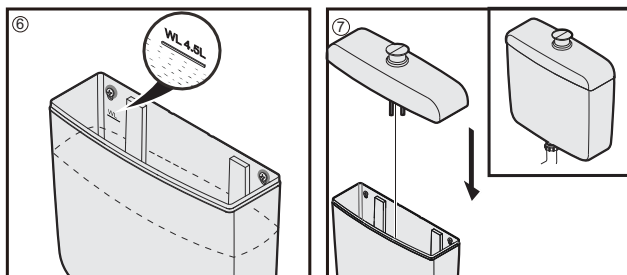


4. Lower the cistern onto the pipe and hook it over mounting screws.
5. Hand tighten coupling nut.
6. If required, cut the flush pipe to length within dimensional tolerances. Lubricate the kee seal with soap, water and fit the pipe into the pan. Fit the coupling nut and seal onto flush pipe.

# INSTALLATION INSTRUCTIONS



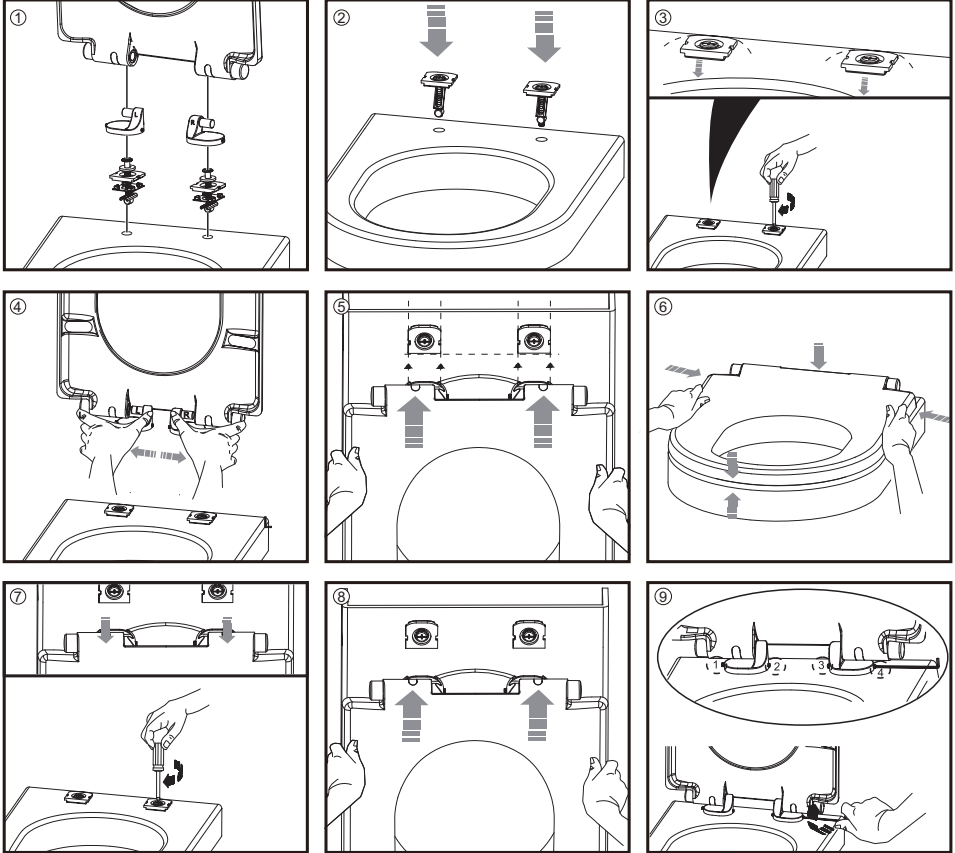
7. Ensure cistern is level as mounting screws are secured.
8. Fit the water supply pipe using approved fittings.
9. Turn on the water. Operate the cistern and check for leaks.



10. Water level marking (Factory setting) 4.5/3L. Ensure water level fills to marked water level line.
11. Carefully refit the lid, then test flush operation.

# INSTALLATION INSTRUCTIONS

Wolfen Single Flap Seat 1813643 1813644 ,1813645





# INSTALLATION INSTRUCTIONS

## Wolfen Back Rest with Fixed Arms

26138

### Important Note

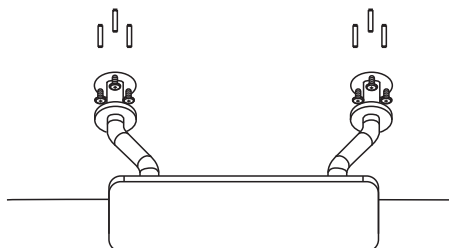
The Wolfen back rest should be properly assembled, installed and cared for. Failure to follow the below instructions may result in serious injury.

The back rest bar meets AS 1428.1-2021 and is manufactured from high quality stainless steel with a HDPE back rest. It has been tested to a loading of 1100N. Proper care must be taken to install the grab bar to an appropriate load bearing base, using appropriate fixing bolts.

As per AS1428 bottom edge of back rest needs to be Min 120mm from top of seat to a Max of 150mm.

### Installation Instructions

**1.** Confirm the contents of the box, The box should contain 1 back rest and 6 screws.

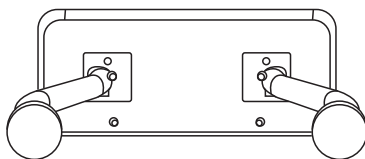


### IMPORTANT INSTALLATION NOTE:

Where there is an inwall cistern installed, take care to ensure that no screws are drilled into the concealed cistern.

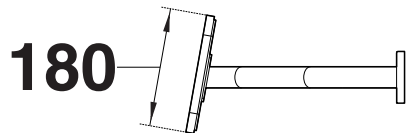
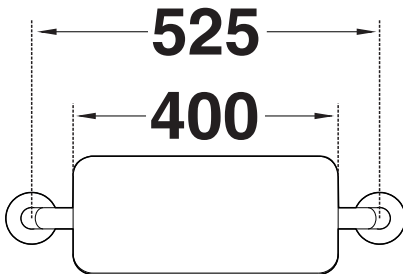
**2.** Assemble the two legs to the stainless panel.

Ensure that the wall the back rest is to be mounted to contains sufficient timber to provide proper structural support.



# INSTALLATION INSTRUCTIONS

<b>Model</b>	Wolfen Back Rest with Fixed Arms
<b>Product Code</b>	26138
<b>Colour</b>	Stainless Steel Arms White Back Rest
<b>Finish</b>	Brushed Arms
<b>Material</b>	304 Grade Stainless Steel Arms UV stabilised HDPE Back Rest 316 Grade Stainless Steel Coach Screws



## CLEANING

We recommend the use of soap water or approved cleaners. This product should not be cleaned with abrasive materials. Damage caused by any improper treatment is not covered by the product warranty. Refer to Warranty Conditions.

# REECE PRODUCT QUALITY GUARANTEE



You have purchased a quality product from Reece Australia Pty Ltd ABN 84 004 097 090 ("Reece"). This product is covered by a 5 year replacement product warranty and a 12 month warranty over spare parts and labour.

## 5 YEAR WARRANTY

This warranty covers faults in the product construction, material and assembly. Products which are within 5 years from the date of purchase, found upon inspection by an authorised Reece representative, to be defective in construction, material or assembly, will be repaired or exchanged with an equivalent product free of charge. Replaced items become Reece's property.

All replacement products will be available for collection without charge to the customer at the nearest Reece branch to the customer's location, or elsewhere as agreed between the customer and Reece.

## Labour and Spare Parts

The labour for the replacement of products and spare parts to which this warranty applies will be supplied by Reece or relevant supplier using licensed plumbers engaged by Reece or relevant supplier within 1 year from the date of purchase. Spare parts other than those listed in the Manufacturer's Provisions above, which are within 1 year from the date of purchase found upon inspection by an authorised Reece representative to be defective in construction, material or assembly, will be replaced free of charge.

## Warranty Conditions

This warranty will apply only under all of the following conditions:

- The item has been installed by a licensed plumber
- Failure is due to a fault in the manufacture of the product
- Proof of purchase (including the date of purchase) is provided
- The installation of the product is in accordance with the instructions provided

This warranty does not cover products purchased as an ex-display without being fully checked and tested for sale by the manufacturer.

This warranty does not include faults caused by:

- Unsuitable or improper use
- Incorrect installation or installation not in accordance with the instructions provided
- Installation or part installation by the purchaser or any person other than a LICENSED PLUMBER
- Normal wear and tear
- Inadequate or complete lack of maintenance
- Chemical, electrochemical or electrical influences
- Harsh detergents or abrasive cleaners used on product finishes

## EXCLUSIONS

To the fullest extent permitted by law, Reece excludes all liability for damage or injury to any person, damage to any property, and any indirect consequential or other loss or damage.

## CLAIM PROCEDURE

For all warranty queries customers are to contact the branch where the product was purchased. These details can be found on your purchase invoice.

Our goods come with guarantees that cannot be excluded under the Australian Consumer Law. You are entitled to a replacement or refund for a major failure and for compensation for any other reasonably foreseeable loss or damage. You are also entitled to have the goods repaired or replaced if the goods fail to be of acceptable quality and the failure does not amount to a major failure.

**Don't risk it, use a licensed plumber.™**

IF AFTER CHECKING THE  
INSTALLATION INSTRUCTIONS  
AND IMPORTANT  
INFORMATION, THE PROBLEM  
HAS NOT BEEN IDENTIFIED,  
CUSTOMERS ARE TO  
CONTACT THE BRANCH  
WHERE THE PRODUCT WAS  
PURCHASED. THESE DETAILS  
CAN BE FOUND ON YOUR  
PURCHASE INVOICE.

General contact details for  
Reece are as follows:

Reece Australia Pty Ltd  
57 Balmain St  
Cremorne VIC 3121  
(03) 9274 0000  
[admin@reece.com.au](mailto:admin@reece.com.au)



**WOLFEN™**

[reece.com.au/wolfen](https://reece.com.au/wolfen)