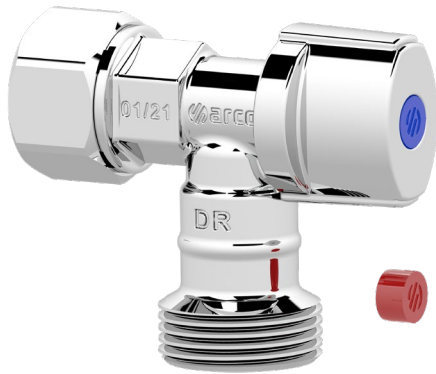




## WASHING MACHINE STOP GIRO LEAD FREE

WASHING MACHINE STOP GIRO is a quarter turn angle valve with loose nut and anti-lime system inside.



- **VITAQ system:** more life less lime scale at higher temperatures:
  - Increase your installation life span and the flow comfort.
  - Eliminating lime scale from building up over time.
  - Smoother open/close operation.
- **GIRO system,** patented loose nut system connection, for easy installation.
- Reinforced barb cone washer, with VITAQ system.
- Metal handle with inox screw and double index: Compact and chrome plated for more endurance. Each part includes one red and one blue index.
- One piece stamped body, compact and resistant.
- Double o-ring on ball-stem to secure external leak tightness.
- 100% leak tested in factory. Double tested low and high pressure.



## TECHNICAL DATA SHEET WASHING MACHINE STOP GIRO

### PRODUCT SCOPE

Quarter turn washing machine valves 15 mm x 20 mm installed upstream of a terminal fitting to shut off water supply in a quick and safe way isolating the device to service or repair. Intended for use in residential and commercial potable water distribution networks. It includes GIRO system for an easy and quick installation as well as VITAQ system for preventing lime scale problems.

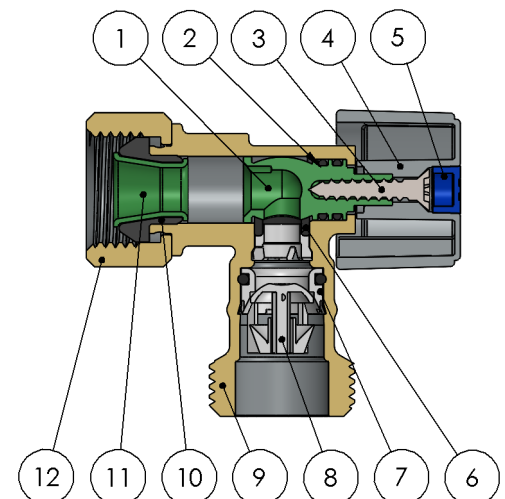
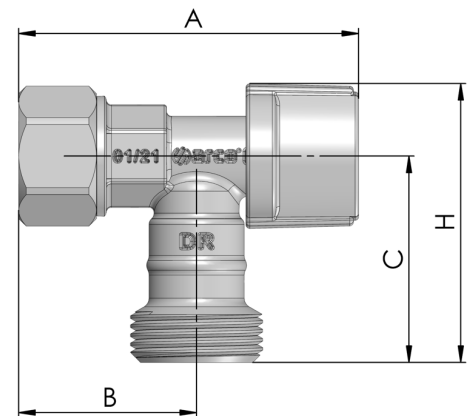
### GENERAL DIMENSIONS, PRESSURE & TEMPERATURE

Code	Size	A (mm)	B (mm)	C (mm)	H (mm)	PN (KPa)	Temp. range (°C) (*)
AS500	1/2F x 3/4M	68	36	41	56	1.600	0 up to 80

(\*) For continuous hot water use up to 80°C (excluding freezing)

### MATERIALS

Item	Component	Material	Finishing
1	Ball-stem	Anti-lime polymer	VITAQ
2	O-ring	EPDM	-
3	Screw	Stainless steel	-
4	Handle	ZAMAK	Chrome plated
5	Index	ABS	Blue / Red
6	Seat	NBR	-
7	Supporting clip	POM	-
8	Check valve	POM & Inox	-
9	Body	CW511L Brass	Chrome plated
10	Washer	EPDM	-
11	Barb	Anti-lime polymer	VITAQ
12	Nut	Brass CW614N	Chrome plated





## OTHER FEATURES

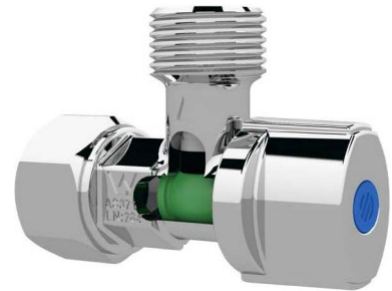
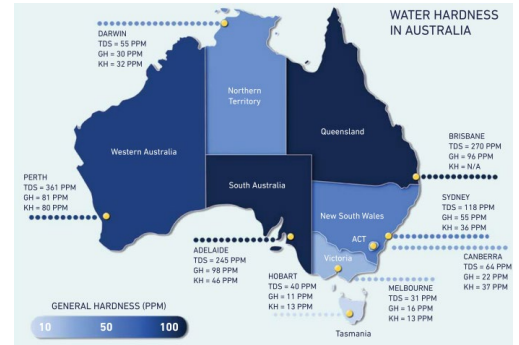
### VITAQ SYSTEM

Calcium in water is directly linked to the geological properties of the soil. Water filtered through limestone holds more calcium than water passing through rocky soil. Water hardness is measured by the amount of calcium and magnesium ions it contains.

Limescale builds up in pipes, taps, fittings, and sanitary ware, and it can eventually block them completely. It causes damage to electrical appliances, heating elements and obstructs water pumps. Sometimes the whole installation needs to be removed.

The system created to solve problems of limescale in installations, extending the valves service life by protecting them from the main pain points in any installation:

- Handle blocking. After several years limescale can block the valve manoeuvre, making difficult the downstream devices maintenance or repair. VITAQ system avoids the blocking by preventing the lime scale growth.
- Bore reduction. Lime scale can grow up and reduce the bore of the valve, VITAQ system keeps the flow rate over the time.



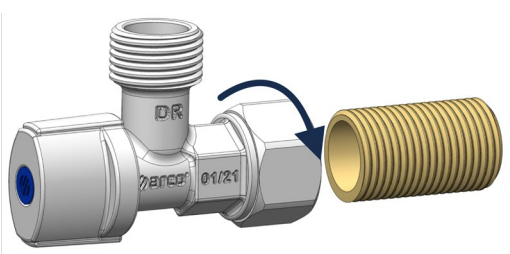
### GIRO SYSTEM

GIRO system is patented loose nut system connection, for easy installation. Its compact design enables quicker and easier installation in tight spaces. Giro also features a cone washer paired with a reinforced barb ensuring a strong seal, every time. It's resistant to hard water thanks to VITAQ technology, eliminating limescale from building up over time.

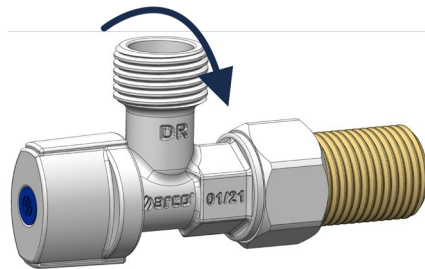


Installation is easy and quick. **Thread** the loose nut connection to the threaded pipe with your hand (no tooling is required), leave it not too tight, ensure that the valve can rotate axially. **Adjusts** the valve in the correct orientation. Once located at your convenience, **tighten** the loose nut preferably using a spanner. Do not over tight the loose nut to avoid cutting the cone washer.

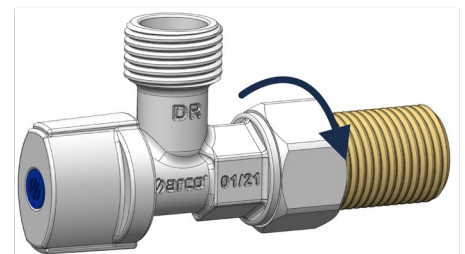
#### 1 THREAD



#### 2 ADJUST

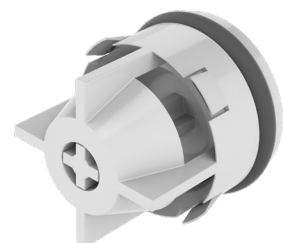


#### 3 TIGHTEN



### NON RETURN VALVE

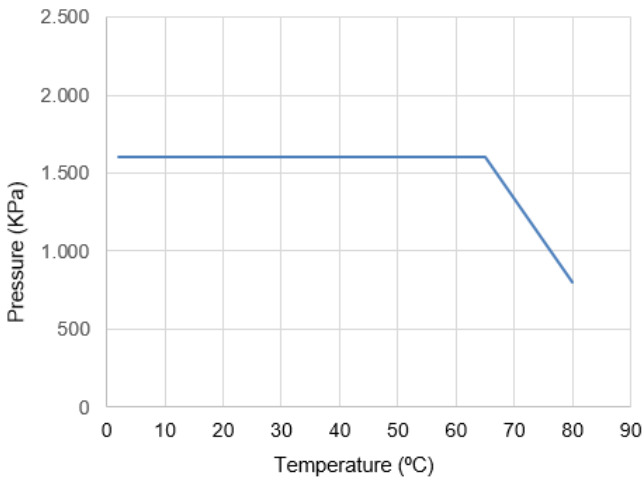
These valves incorporate a check valve system according to standard AS/NZS 2845,1:2022. The integrated check valve is installed close the outlet of the valve prevents from backflow from down stream network and devices, resulting in safer water.



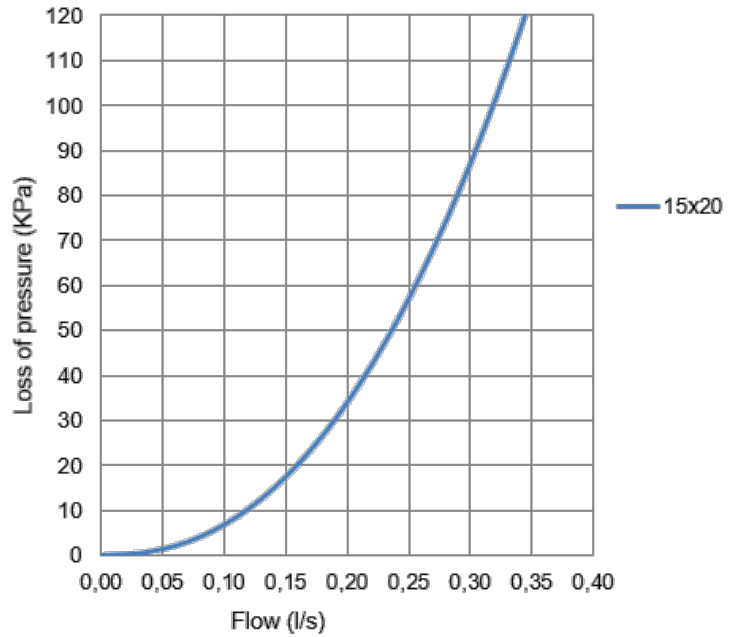


## TECHNICAL DATA

### Pressure vs temperature



### Hydraulic features. Flow vs Loss of pressure



### Compatibility with fluids

Fluid	Compatibility
Drinking water	Excellent

For any other fluid, please contact Arco technical Service.

Size	15 x 20
Kv	1,15

Kv (m<sup>3</sup>/h), cubic meters per hour that flow through the valve generating a loss of pressure of 1 bar.

## INSTALATION INSTRUCTIONS

This product is designed to be used in drinking water supply, in compliance with the Lead-Free requirements of the National Construction Code Volume 3. For installation refer to AS/NZS 3500.

1. Switch off flow of water to the installation area.
2. Do not apply sealing material tape to the thread of the inflow pipe. This valve is fitted with an internal cone sealing washer.
3. Thread the valve onto the inflow pipe. Do not apply excessive torque, it can damage the washer.
4. Connect hose to fixture and to the outflow connection of the valve, ensure that connections are watertight.
5. Check operation of valve by turning handle a full quarter turn to ensure connections are watertight.

These valves are intended to work in full open or full close position, intermediate positions may damage them.



All products have an environmental impact during its life cycle, even once retired. All the components of this product can be recycled. Once the use is over, leave the valve in any recycling green point. Válvulas Arco reserves the right to change the product or any of its technical specifications without prior notice.

FT02500 ING – Edition 2024-07