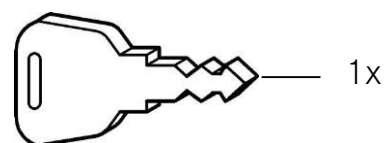
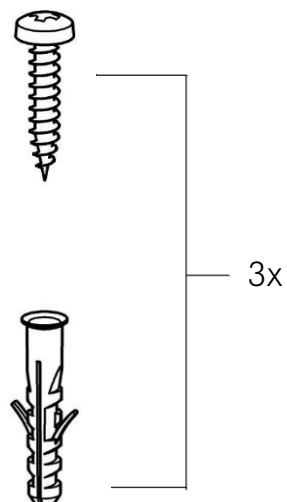
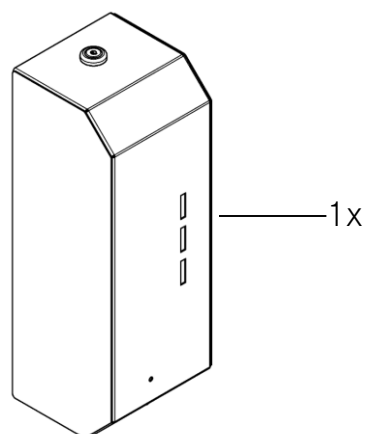
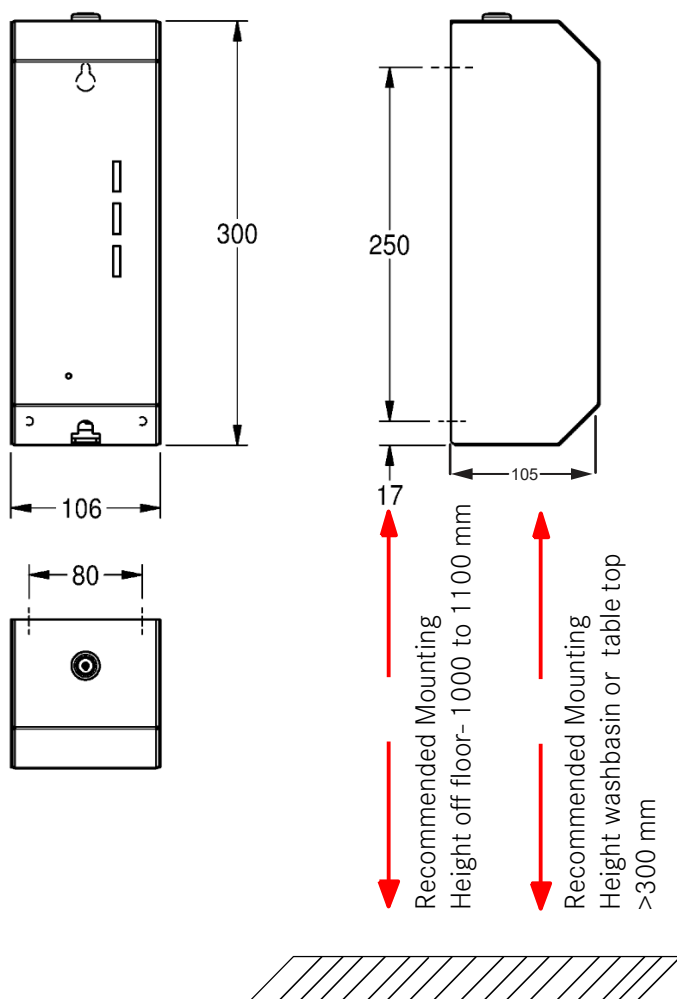


MOUNTING INSTRUCTIONS

TOUCH FREE SENSOR SOAP DISPENSER

FRK202067N / 2030063572

106 x 300 x 105mm (Width x Height x Depth)



PRODUCT MATERIAL:

1. SS304L Grade Stainless steel; all the surfaces have satin-finish.

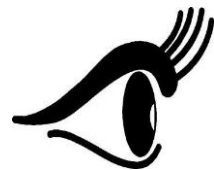
INSTALLATION GUIDELINES:

1. Use the keys provided to open the door of the sanitizer dispenser unit.
2. Place the unit on the wall and mark the exact point and the mounting hole distance.
3. Drill mounting holes on the wall using the reference marked dots
4. Fix the plastic dowel in to the hole and make sure they are flushed with the wall.
5. Now place the unit on the wall and install the screws into the mounting holes.
6. Install the soap pump & tank with 6 pcs. 1.5 V Alkaline AA batteries(not include in delivery)
7. Make sure the screws are all the way in and the screw heads are the only visible parts.

REPLACEMENT PARTS:

1. Lock and key set- (EACCS157 Lock & Key) - 2030041135
2. Soap pump & tank (EACCS024 Soap tank w/ dispensing tube) - 2000103311
3. Control Unit w/o battery (ESTRX625-ELECT Control Unit w/o battery) - 2000103232

NOTE:



www.franke.com/ae/en/ws
