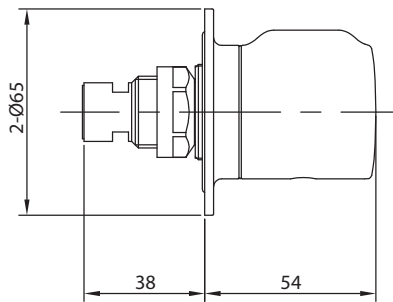
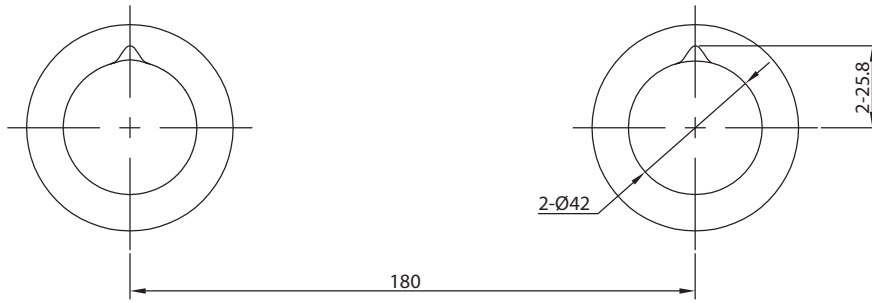


# FLOW WALL TOP ASSEMBLIES



Dimensions are nominal measurements only.

## SPECIFICATIONS

<b>Recommended Use</b>	Domestic, Hotel & Commercial	
<b>Colour</b>	Chrome	
<b>Material</b>	Brass	
<b>Pressure Rating</b>	Minimum Continuous Working Pressure	150 kPa
	Maximum Continuous Working Pressure	500 kPa
<b>Temperature Rating</b>	Minimum Continuous Working Temperature	1°C
	Maximum Continuous Working Temperature	75°C
<b>Suitable Hot Water Units</b>	Storage Tank	Yes
	Continuous Flow	Yes
	Gravity Feed	No
<b>Cartridge Type</b>	Ceramic Disc	
<b>Retrofit Suitability</b>	Suitable	



To see the complete MILLI range go to [www.reece.com.au/bathrooms](http://www.reece.com.au/bathrooms)

## CLEANING RECOMMENDATIONS

We recommend the use of soapy water or approved cleaners.

This product should not be cleaned with abrasive materials.

Damage caused by any improper treatment is not covered by the product warranty. Refer to Warranty Conditions.

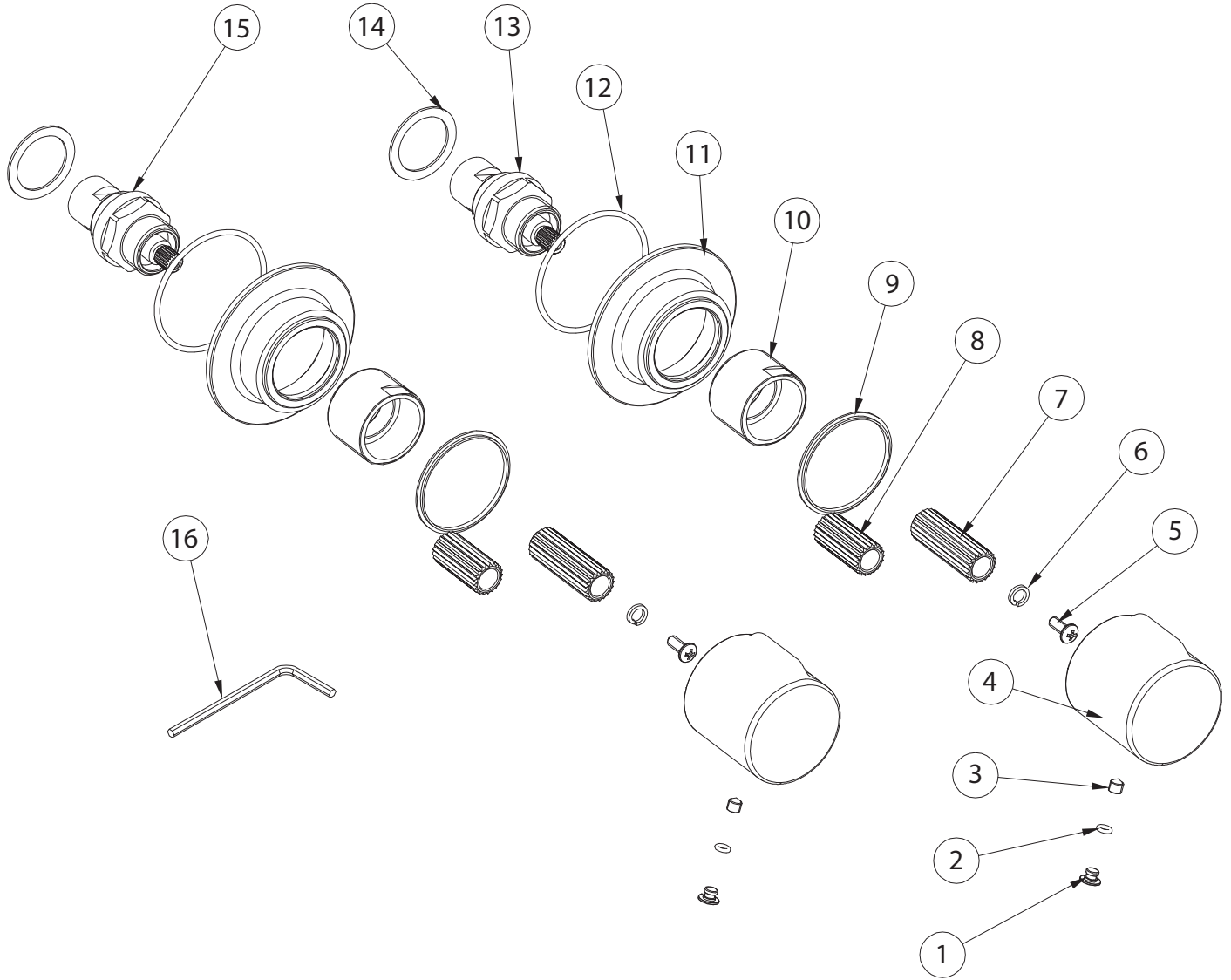
# FLOW WALL TOP ASSEMBLIES

## INSTALLATION INSTRUCTIONS

1. Check the breach is between 3-21mm from the finished wall
2. Check seats in recess tap bodies are in good condition and free of foreign materials. Reseat if required
3. Separate locknut and fibre washer from cartridge
4. Grip the cartridge on the hexagonal flats and install cartridge fully into breach until it seats. Do not overtighten. Do not tighten cartridge into position by rotating spindle
5. Turn spindle to off position and turn on water at mains. Check that cartridge has fully seated. If dripping occurs then gently tighten cartridge further until dripping stops
6. Firmly tighten cartridge locknut and fibre washer into position
7. Screw bush connector onto cartridge locknut
8. Screw wall flange with O Ring fitted into position until it is tight against the wall
9. Turn cartridge spindles to the fully OFF position and assemble handle. Select spline connector (long or short) and cut down if required
10. Ensure that the handle fins are pointing up when in the off position
11. Fix the handle by tightening the grub screw with allen key and then push plug into position

# FLOW WALL TOP ASSEMBLIES

## COMPONENT LISTING



No.	Description
1	Handle Cap
2	O Ring
3	Grub Screw
4	Handle
5	Screw
6	Washer
7	Spline 37.5mm
8	Spline 27.5mm

No.	Description
9	Washer
10	Threaded Bush Connector
11	Wall Flange
12	O Ring
13	Cartridge (Cold)
14	Fibre Washer
15	Cartridge (Hot) with locknut
16	Allen Key