



APPLICATIONS



TOILET



HAND BASIN



WALL HUNG TOILET



SHOWER

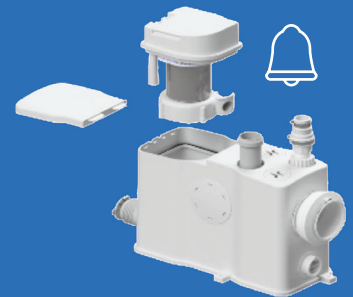


WMTS 106:2019
Certificate No. 23048
Manufacturer: SFA
Brand: Saniflo

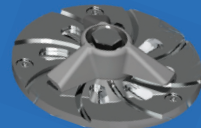
PRODUCT REFERENCE:
SA222

Sanimulti®

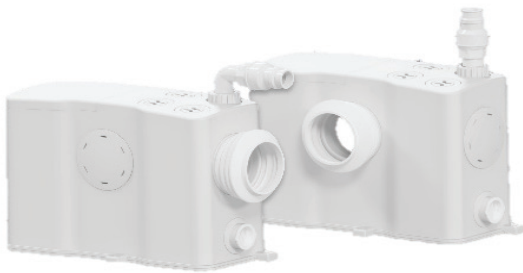
Sanimulti® is a versatile macerator with two different pan connection options making it ideal for all types of applications. The Sanimulti can be used in domestic or commercial projects.



Removable motor cassette for ease of service



Robust blade suitable for heavy usage



TECHNICAL CHARACTERISTICS

Discharge Pipework	25 mm
Motor Power	560 Watts
Voltages	220-240 V/50 Hz
Working Waste Water Temp	40°C
Product Weight	9.5 kg
Overall Measurements	505 x 361 x 205 mm
Inlet Pipework	100-40 mm
IP Rating	IP44

WHY CHOOSE THIS PRODUCT?

Ideal for commercial applications with optional "plug & play" alarm interlock connectivity for water and power isolation

Robust stainless steel macerator blade for intensive use

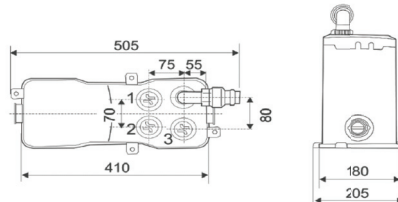
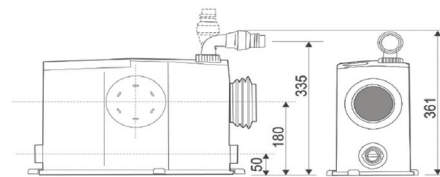
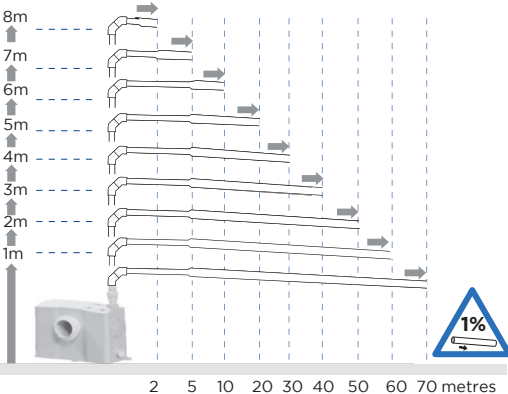
Factory pre-mounted non return valve (supplied)

Macerator needs minimum 4.5 L of unrestricted flush for optimal function

Can be equipped with Sanialarm Interlock (sold separately)

VERTICAL/HORIZONTAL PERFORMANCE

Increase size of horizontal run by one pipe size after 5m. All horizontal pipework requires a minimum of 1:100 fall.



FLOW RATE PERFORMANCE CHART

Discharge height (m)

