

### Franke Olten Gooseneck Pull Out Sink Mixer Matte Black (4\*)

#### SPECIFICATIONS

Recommended Use	Domestic
Colour	Brushed Black
Material	Stainless Steel
Recommended Pressure Range	150 - 500 kPa
Max Continuous Working Pressure	500 kPa
Suitable for Storage Tank Hot Water	Yes
Suitable for Continuous Flow Hot Water	Yes
Suitable for Gravity Feed Hot Water	No

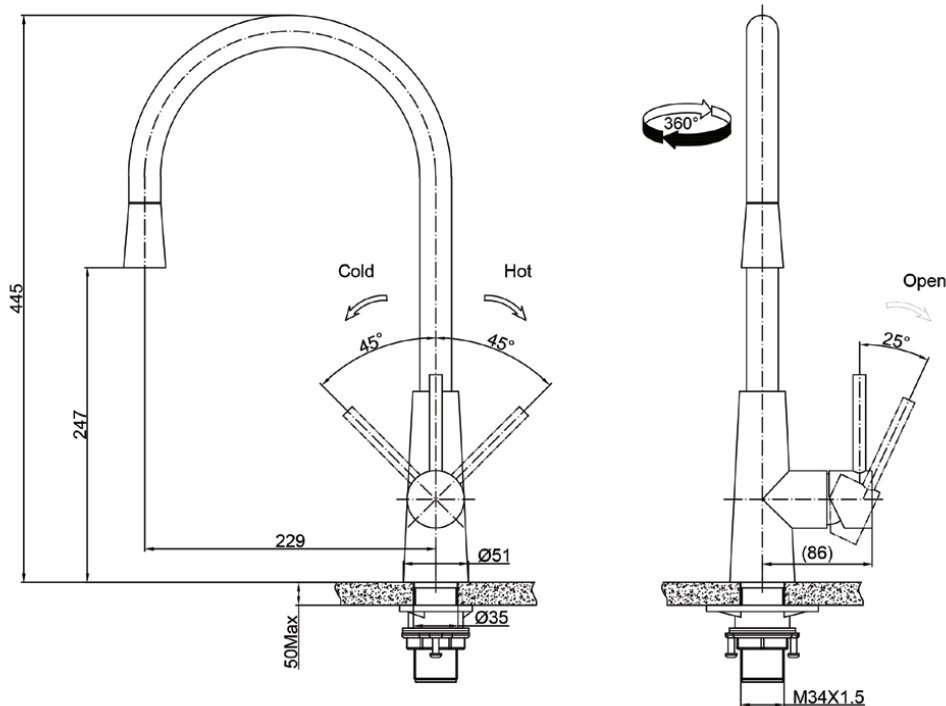
#### WARRANTY

Warranty	15 years*
<i>Please refer to Warranty Page for full terms and conditions</i>	



\*Tap Support Included

To see the complete Franke range go to [www.reece.com.au/bathrooms](http://www.reece.com.au/bathrooms)



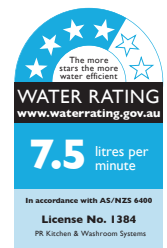
Dimensions are nominal measurements only.

#### CLEANING RECOMMENDATIONS:

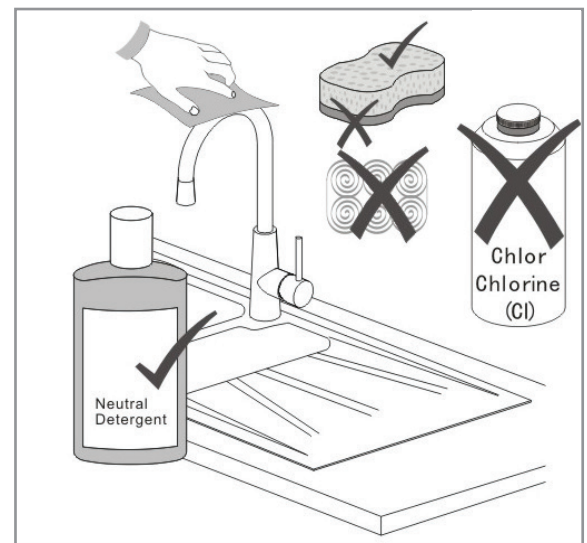
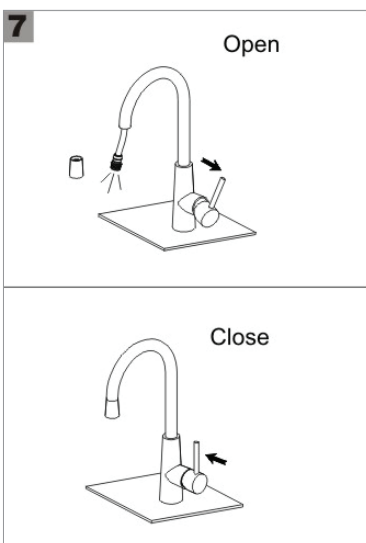
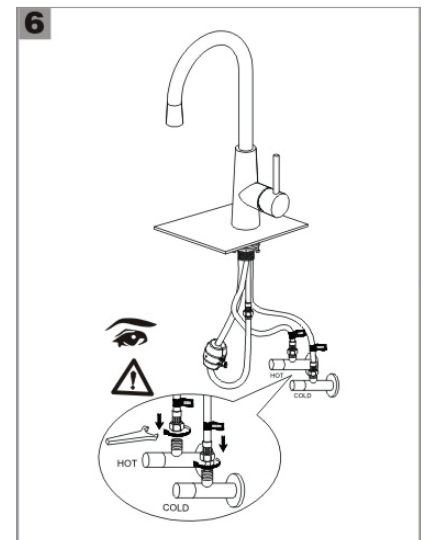
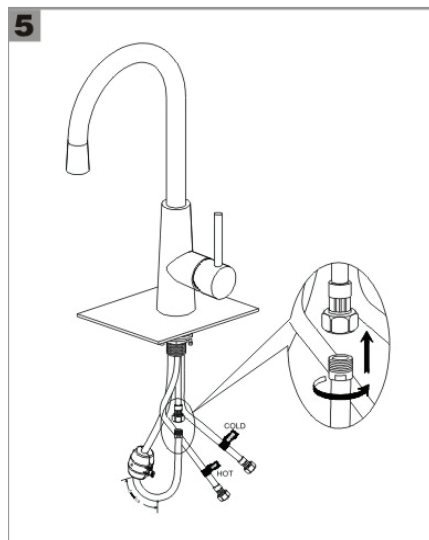
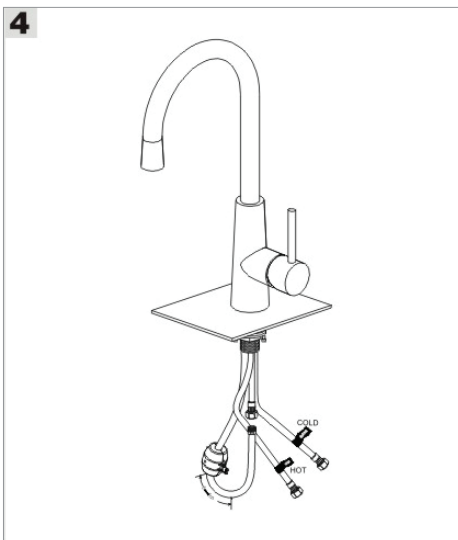
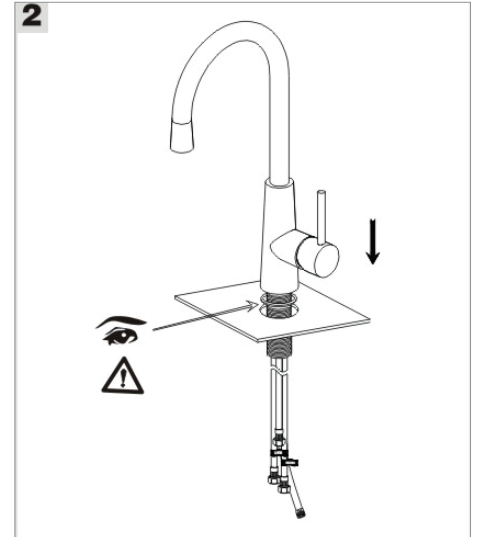
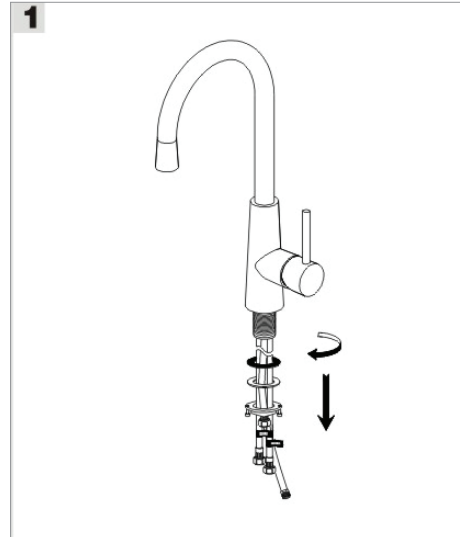
We recommend the use of soapy water or approved cleaners. This product should not be cleaned with abrasive materials. Damage caused by any improper treatment is not covered by the product warranty. Refer to Warranty Conditions

**Disclaimer:** Products in this specification manual must by regulation be installed by licensed and registered trade people. The manufacturer/distributor reserves the right to vary specifications or delete models from their range without prior notification. Dimensions are nominal measurements only. Dimensions and set-outs listed are correct at time of publication however the manufacturer/distributor takes no responsibility for printing errors.

Published 04/07/2019



# Franke Olten Mixer Installation Instructions



FRANKE

## Franke Olten Mixer Care Instructions

- Periodically clean the aerator filter
- Install filter valves under the sink and periodically clean the filters
- Do not use detergents, solvents, chemical agents, abrasive sponges, wire wool or alcohol etc. which would irreparably damage the surface of the product and ruin its appearance, sheen and matte finishes.
- Clean with soapy water and dry with a soft cloth
- Dry the product after use if the water is very hard or aggressive, as it may leave deposits, which would damage the surface.
- Do not install the tap when the water pressure exceeds 500kPa (in this case, pressure limiting valves are required).
- Rinse the water pipes before installing the tap