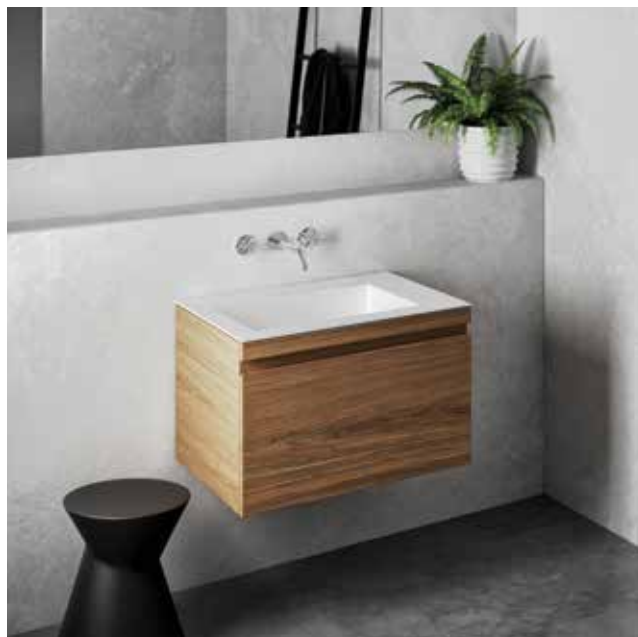


URBAN MK II WALL HUNG VANITY UNIT



Inspired by evolving modern architecture, Urban has been created to complement contemporary interiors and transitional styles. The chic streamlined design of Urban is flexible and practical, intended to suit a wide variety of environments and applications.

SPECIFICATIONS

Recommended Use	Domestic, Hotel and Commercial
Material	Exterior: Timber Laminate on HMR board, Powder Coat on HMR board Interior: Laminate on HMR board
Cabinet Colour	Oak, Matt Storm Grey, Matt White
Bench Top Colour	Solid Surface Matt White
Fixing	Bolted/screwed to wall by a licensed trades person Fixings not supplied Installer to determine appropriate wall fixings
Basin	Urban Slimline Inset Basin. Cannot be sold separately Solid Surface Matt White
Basin Configuration	Integrated Left Hand Bowl or Double Bowl
Bowl Capacity	16 Litres
Tap Hole Availability	0, 1 or 3 Tapholes (Tapware not included)
Overflow	No
Plug & Waste	Supplied with 32-40mm Chrome Pop Up Waste
Drawers	Soft Close Drawers Includes Adjustable Internal Divider
Handle Type	Finger Pull
Micro Trap	Supplied with a 40mm pvc micro trap



To see the complete OMVIVO range go to
www.reece.com.au/bathrooms

VARIATIONS	700	900	1200	1400 Double
Width mm	700	900	1200	1400
Depth mm	490	490	490	490
Height mm	457	457	457	457
Number of Drawers	1	1	2	2

Disclaimer: Products in this specification manual must by regulation be installed by licensed and registered trade people. The manufacturer/distributor reserves the right to vary specifications or delete models from their range without prior notification. Dimensions are nominal measurements only. Dimensions and set-outs listed are correct at time of publication however the manufacturer/distributor takes no responsibility for printing errors.

Tech Page Version 1



URBAN MK II WALL HUNG VANITY UNIT

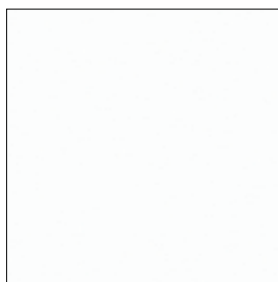
CABINET OPTIONS



OAK



MATT STORM GREY



MATT WHITE

DETAILED CLEANING INSTRUCTIONS

Regular cleaning will assist to keep your solid surface looking fantastic and reduce wear and dirt build up. Spills should be cleaned promptly.

Clean with mild detergent or soapy water and a soft cloth, sponge or non-scratch scourer*.

For stubborn marks start with the non-scratch scourer and a mild detergent, if required use a diluted very mild abrasive cleaner* cleaning in light circular motions.

Intense clean/repair: For extreme marks and light scratches a very Light buff in circular motions using the finest grade sand/glass paper will restore the surface. A heavier grade of sandpaper will scratch the surface which can be removed by then using a light sand paper. Avoid applying excessive pressure or clean/rub the same area for a prolonged time unless repairing a scratch or damage.

*Always test 'non scratch' and 'mild abrasive' products in a non-conspicuous area first to ensure suitability as brands can differ.

Important notes: If the product is created from a combination of Solid surface and another material such as glass or Softskin, it is important that the cleaning instructions for Solid surface are not carried out on the alternate material. Damage may occur which will void your warranty.

To maintain a uniform appearance, you may need to clean the entire surface. Never use sharp products such as steel wool or aggressive, commercial grade / strong cleaners or chemicals (e.g. acetone, trichloroethylene, acids, and caustic soda) as these may damage and scratch the surface. For best results always finish by wiping surface clean of all detergents and dry with a soft clean cloth.

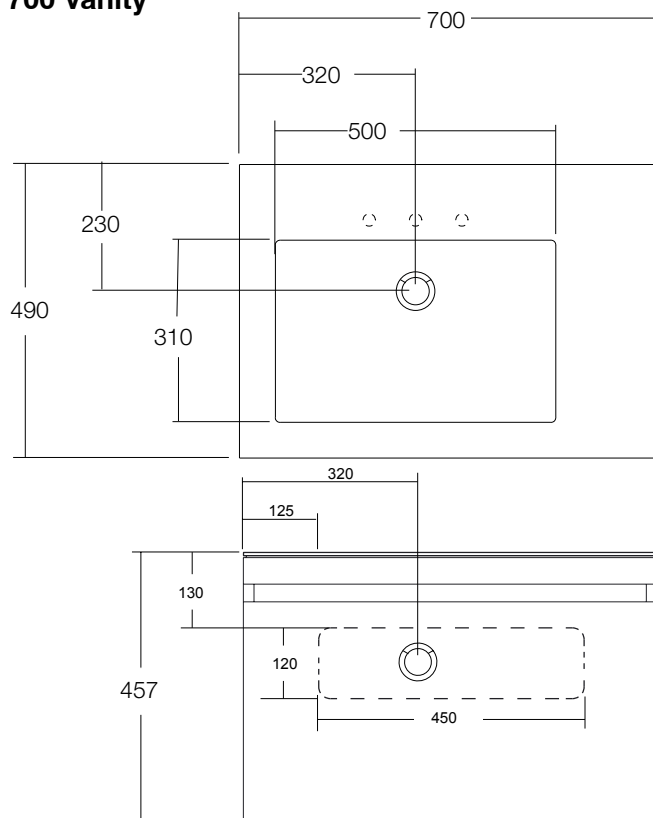
Your furniture should be cleaned with a mild, non-acidic, non-abrasive detergent and soft cloth. Finish by cleaning off detergents with a soft slightly damp cloth and towel dry. Always clean spills and water immediately. It is important that the cleaning instructions for your solid surface basin are not carried out on the vanity as this will scratch the finish.

Damage caused by any improper treatment is not covered by the product warranty – refer to Warranty Conditions.

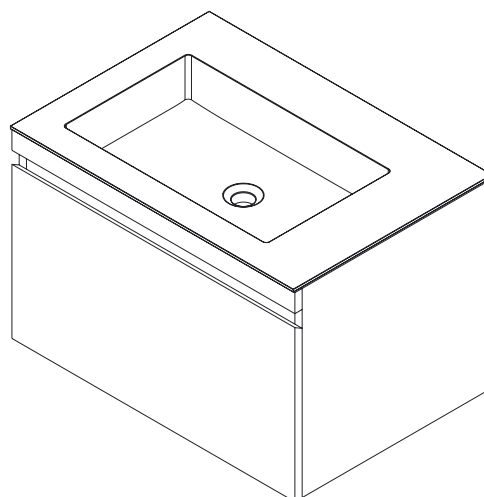
URBAN MK II WALL HUNG VANITY UNIT

LINE DRAWINGS

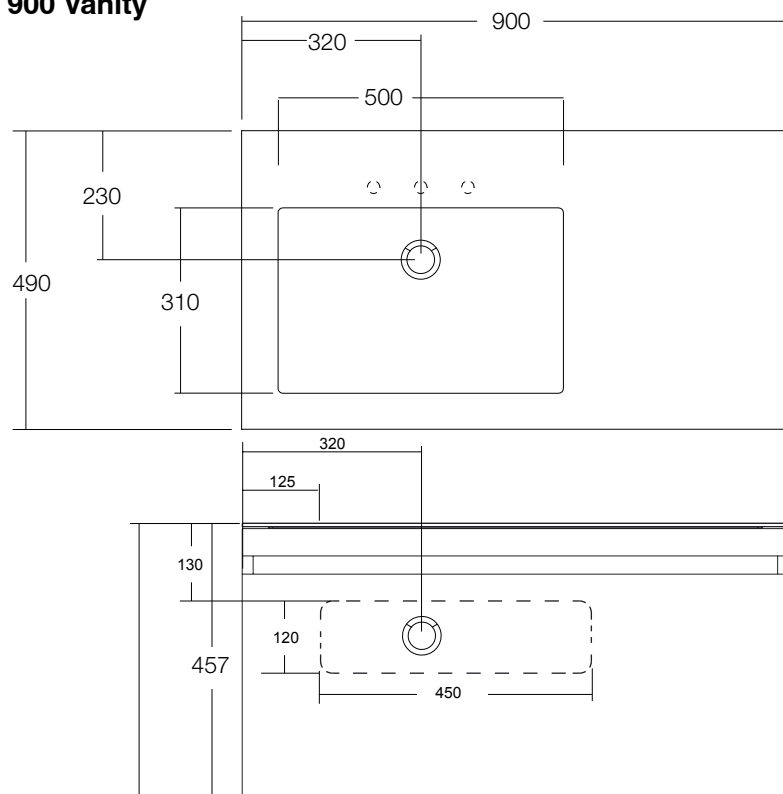
700 Vanity



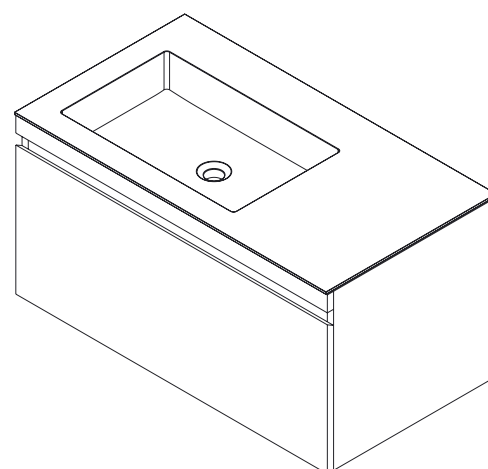
FRONT ELEVATION
BACK PANEL CUT OUT - - - -



900 Vanity



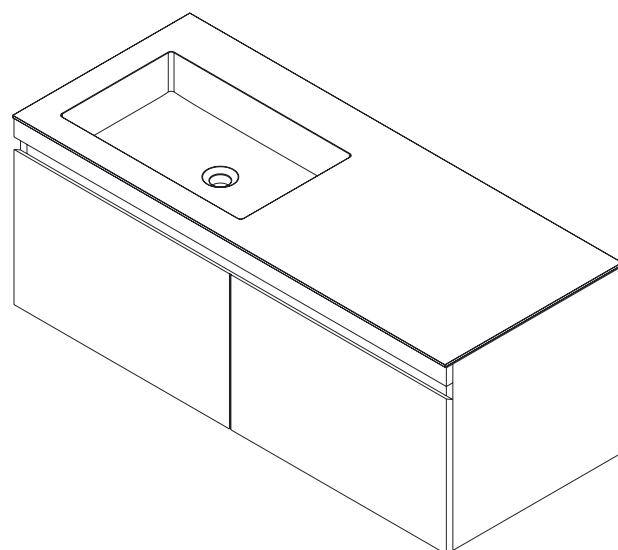
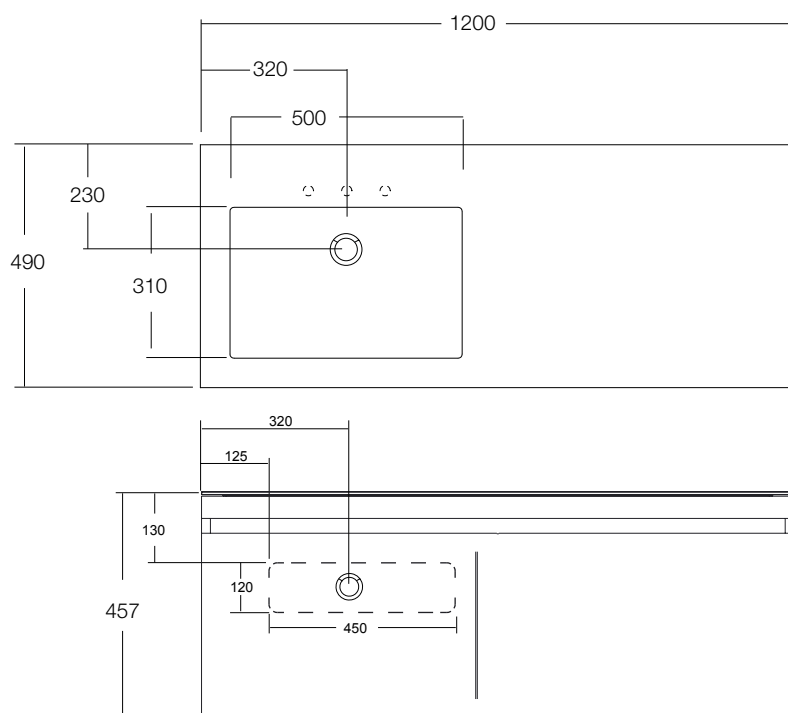
FRONT ELEVATION
BACK PANEL CUT OUT - - - -



Plumbers, please ensure a copy of the installation Instructions is left with the end user for future reference

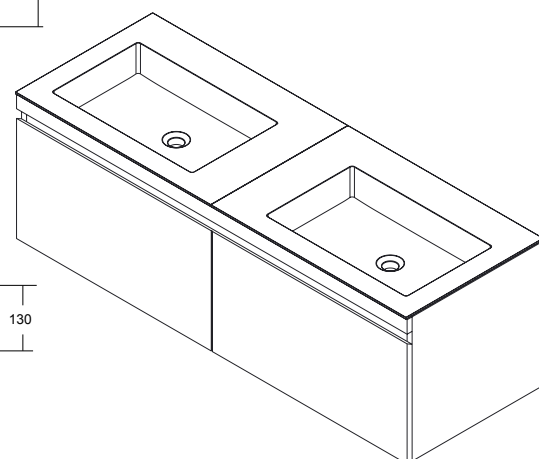
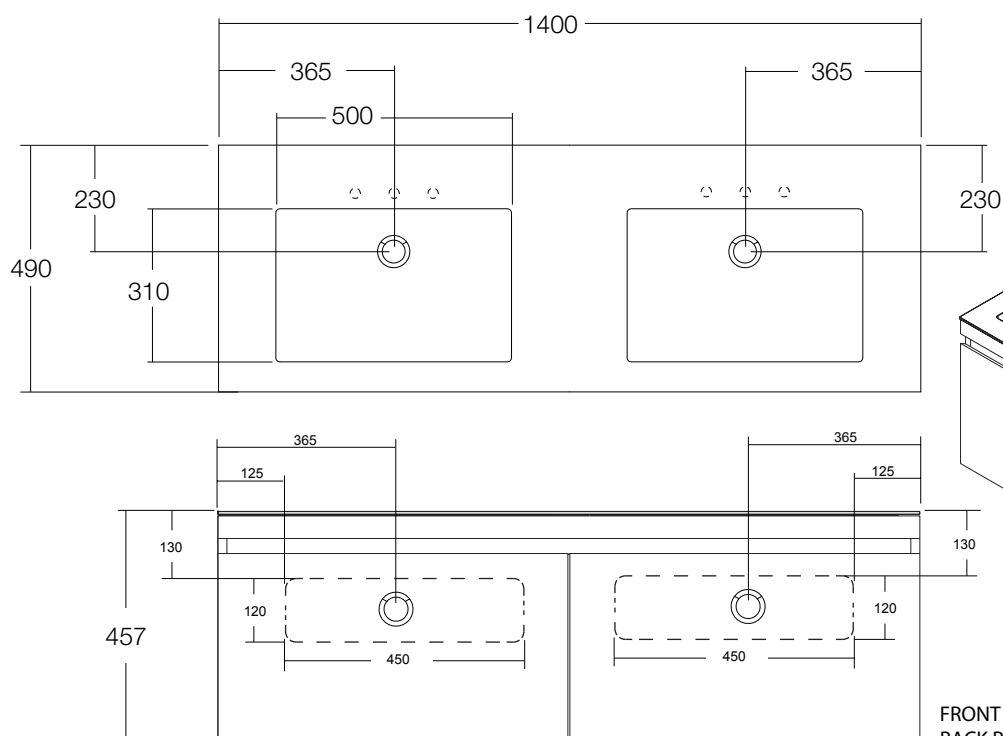
URBAN MK II WALL HUNG VANITY UNIT

1200 Vanity



FRONT ELEVATION
BACK PANEL CUT OUT - - - -

1400 Double Vanity

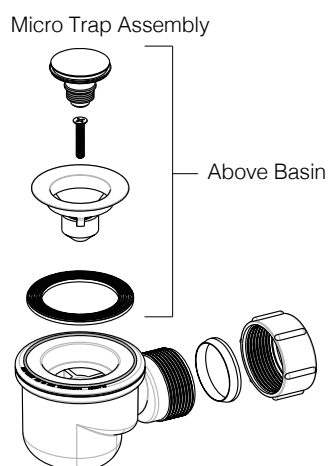
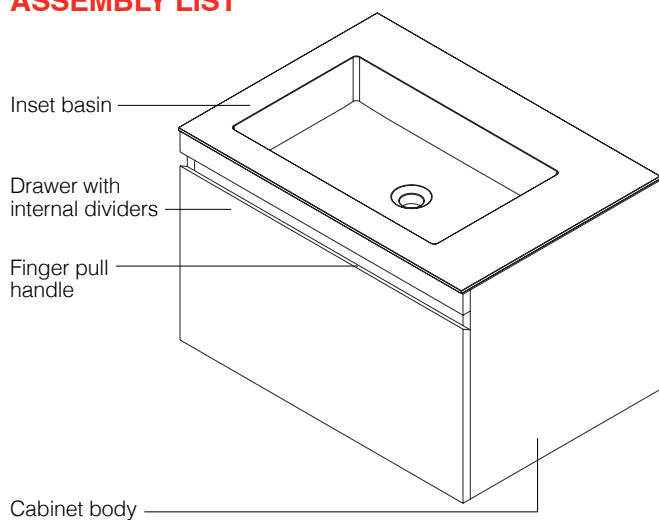


FRONT ELEVATION
BACK PANEL CUT OUT - - - -

Plumbers, please ensure a copy of the installation Instructions is left with the end user for future reference

URBAN MK II WALL HUNG VANITY UNIT

ASSEMBLY LIST



URBAN MK II WALL HUNG VANITY UNIT

INSTALLATION INSTRUCTIONS

NO claims for damages / defects will be recognised after installation.

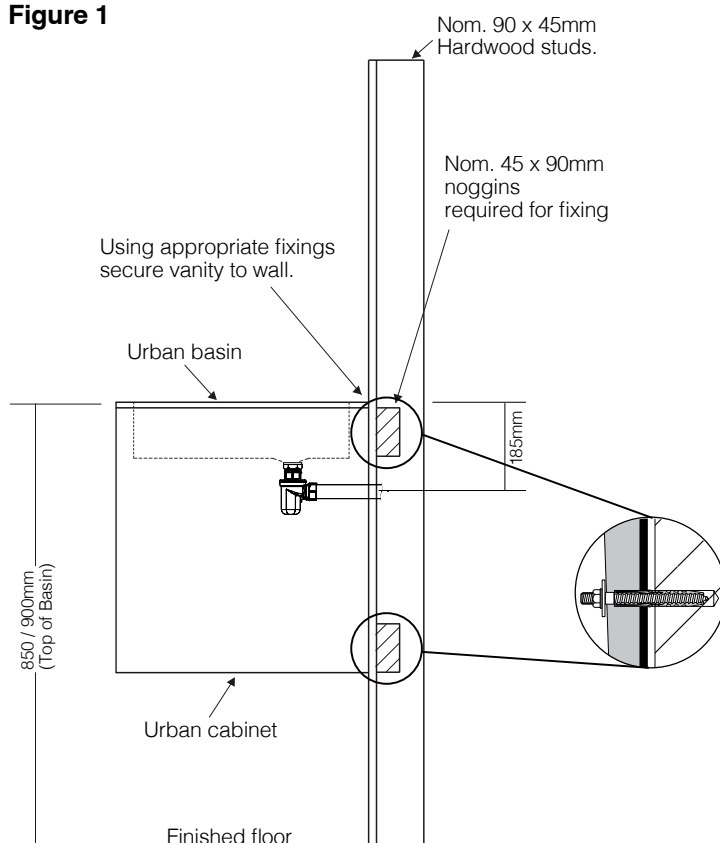
Prior to installation it is important to unpack and inspect your products to ensure no damage has occurred in transit and that the product IS CORRECT.

If damage has occurred, or a visible defect exists, do not proceed with installation and contact supplier IMMEDIATELY.

- Step 1.** Installer to determine appropriate fixings and provide adequate wall framing (studs/noggins) to ensure secure mounting of vanity to wall.
- Step 2.** Ensure that the resulting height will be correct when installing the vanity. See figure 1a.
- Step 3.** Remove drawer/s. See figure 2.
- Step 4.** If the wall is not level/square, packers must be used to prevent vanity twisting/malfunction.
- Step 5.** As a minimum, use fixings at all corners and top and bottom centre. Use additional fixings if required. All fixings must be secured to wall framing (studs/noggins).
- Step 6.** Once vanity is attached to wall, connect micro trap. Refer to figure 1.
- Step 7.** Insert drawer/s. See figure 3.
- Step 8.** Adjust drawer front if/as required. See figure 4.
Drawer adjustment is the responsibility of the licensed installer.

Note: Bottle trap is not included with basin

Figure 1



Dimensions are approximate. Information provided in this installation is a guide only. We recommend having the product on site prior to rough in.

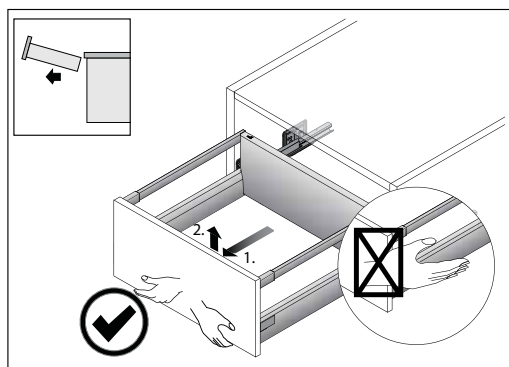
Plumbers, please ensure a copy of the installation Instructions is left with the end user for future reference

URBAN MK II WALL HUNG VANITY UNIT

URBAN MK II VANITY DRAWER ADJUSTMENT INSTRUCTIONS

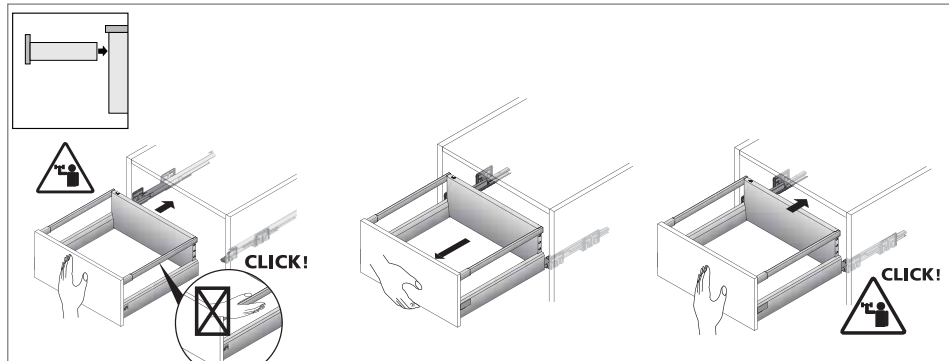
IMPORTANT:
DRAWER ADJUSTMENT IS THE RESPONSIBILITY OF THE LICENSED INSTALLER

Figure 2. Removing drawer



Remove drawer by pulling fully out and then pull upward, holding the underside front

Figure 3. Replacing drawer



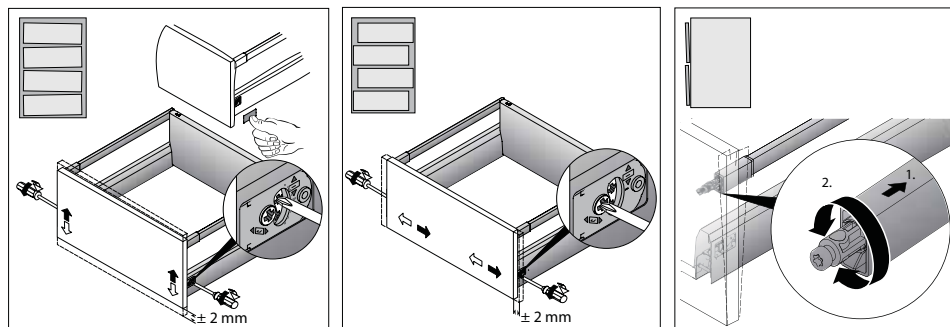
Drawer is inserted by locating it on the runners and pushing it in. Ensure runners 'click' into location. Test operation by opening and closing

URBAN MK II WALL HUNG VANITY UNIT

URBAN MK II VANITY DRAWER ADJUSTMENT INSTRUCTIONS

IMPORTANT:
DRAWER ADJUSTMENT IS THE RESPONSIBILITY OF THE LICENSED INSTALLER

Figure 4. Adjusting drawer front

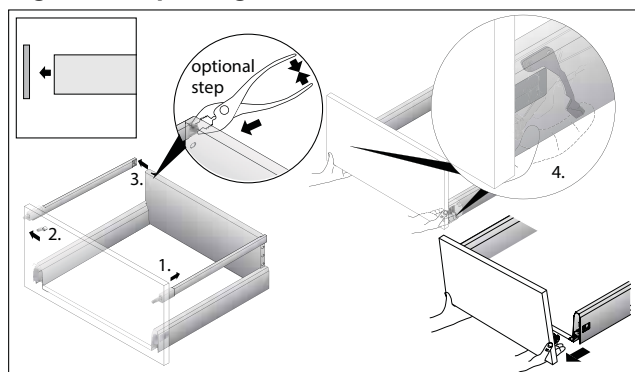


Drawer front height is adjustable at both left and right by maximum $\pm 2\text{mm}$. Rotate click wheel with screwdriver firmly located in place.

Drawer front sideways location adjusts left and right by maximum $\pm 2\text{mm}$. Use screwdriver on adjustment screws at left and right. Adjust as required.

Drawer front tilt is adjustable. Slide back rail cover. Rotate plastic lug in either direction to adjust accordingly.

Figure 5. Replacing drawer front



If front panel requires replacing it is easily removed & reinstalled.

1. Slide left & right rail covers back
2. Detach rails from drawer front panel by pushing to one side.
3. (Optional) Using pliers, remove rails by closing lugs & pulling rail away
4. Disengage front drawer panel by actuating left and right levers. Remove panel