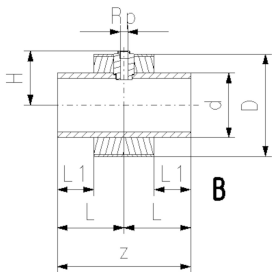
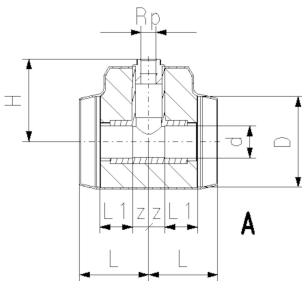


COOL-FIT 4.0 Té con salida roscada para instrumentos y sensores tipo 313, d32-d225

Model:

- Aislamiento PE100 **SDR17** métrico
- Aislamiento hecho de espuma HE (GF)
- Chaqueta Exterior: Resistente al impacto y rayos UV Color: negro
- Con salida roscada de 1/2" para sensores (temperatura, presión)
- Electrofusion Fitting with integrated sealing lip, for a water and vapour tight sealing
- *d32/90 - d110/180 available from Q4 2018



d/D (mm)	Rp (inch)	PN (bar)	Part No.	weight (kg)	H (mm)	L (mm)	L1 (mm)	z (mm)	Type
32/90	1/2	16	738 313 608	0.169	95	79	36	18	A
40/110	1/2	16	738 313 609	0.267	105	87	40	22	A
40/110	3/4	16	738 313 659	0.269	108	87	40	22	A
50/110	1/2	16	738 313 610	0.354	107	94	44	25	A
50/110	3/4	16	738 313 660	0.356	110	94	44	25	A
63/125	1/2	16	738 313 611	0.537	120	103	48	30	A
63/125	3/4	16	738 313 661	0.539	123	103	48	30	A
75/140	1/2	16	738 313 612	0.773	127	116	55	36	A
75/140	3/4	16	738 313 662	0.774	130	116	55	36	A
90/160	1/2	16	738 313 613	1.164	139	130	62	43	A
90/160	3/4	16	738 313 663	1.165	142	130	62	43	A
110/180	1/2	16	738 313 614	1.944	151	154	72	57	A
110/180	3/4	16	738 313 664	1.944	154	154	72	57	A
160/250	1/2	16	738 313 617	2.496	134	165	90	330	B
160/250	3/4	16	738 313 667	2.489	134	165	90	330	B
225/315	1/2	16	738 313 620	5.155	166	185	110	370	B
225/315	3/4	16	738 313 670	5.146	169	185	110	370	B

The technical data are not binding. They neither constitute expressly warranted characteristics nor guaranteed properties nor a guaranteed durability. They are subject to modification. Our General Terms of Sale apply.

Georg Fischer Piping Systems Ltd, Postfach, CH-8201 Schaffhausen/Switzerland

Phone +41 -(0)52-631 1111

e-mail: info.ps@georgfischer.com

Internet: <http://www.gfps.com>