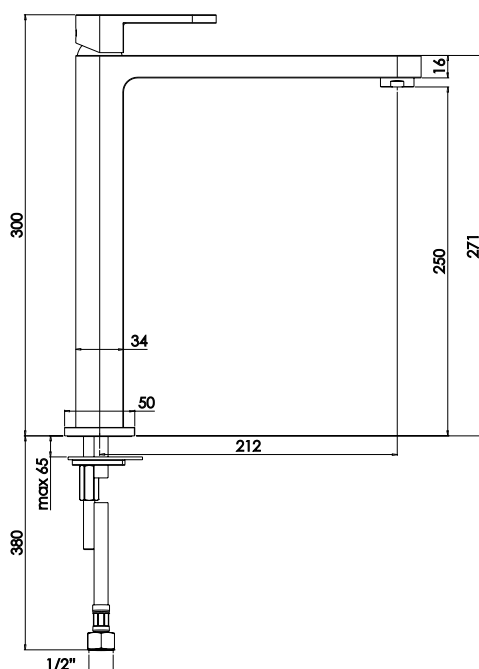


Nobili Up Extended Basin Mixer Chrome (5 Star)



SPECIFICATIONS

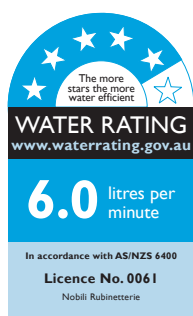
Recommended use	Domestic, hotel and commercial
Colour availability	Chrome
Pressure rating	Maximum continuous operating pressure 1000 kPa. Note: For best performance and longer life we recommend 150-500 kPa.
Temperature rating	Maximum continuous working temperature 80°
Suitable Hot Water Units	Storage tank: Yes Continuous Flow: Yes Gravity Feed: Not recommended
WELS	Stars: 5 Flow rate: 6 L/Min
Standards	AS/NZS 3718



To see the complete Teknobili range go to www.reece.com.au/bathrooms

CLEANING RECOMMENDATIONS

This product should not be cleaned with abrasive materials eg. steel wool/scourers. Do not use any corrosive or abrasive cleaning agents containing acids or scouring agents. Damage caused by any improper treatment is not covered by the product warranty- refer to Warranty Conditions on the last page.



Disclaimer: Products in this specification manual must by regulation be installed by licensed and registered trade people. The manufacturer/distributor reserves the right to vary specifications or delete models from their range without prior notification. Dimensions are nominal measurements only. Dimensions and set-outs listed are correct at time of publication however the manufacturer/distributor takes no responsibility for printing errors.

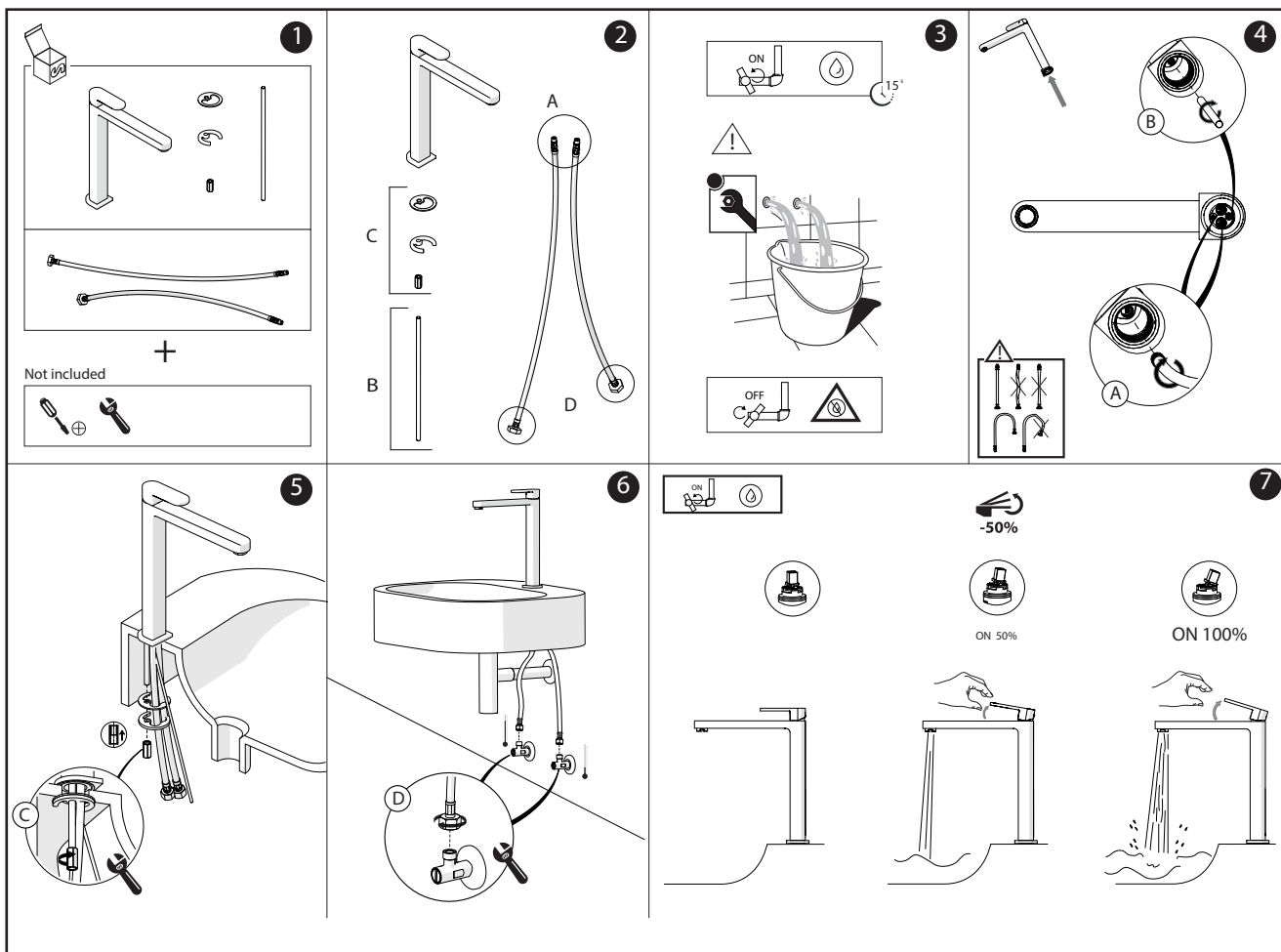
Tech Page Version 1

Nobili Up Extended Basin Mixer Chrome (5 Star)

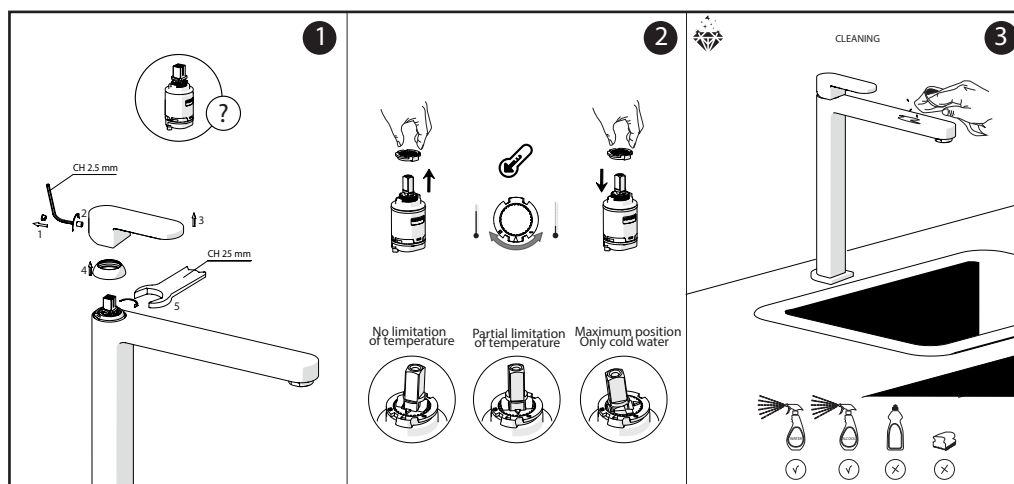
INSTALLATION INSTRUCTIONS

Important Note

Mixer must be installed to the requirements of AZ/NZS 3500 by a qualified plumber. Your mixer comes to you already factory assembled and tested. We do not recommend the dismantling of any internal part of the mixer. The mixers are factory tested and sealed so as to give the best performance.

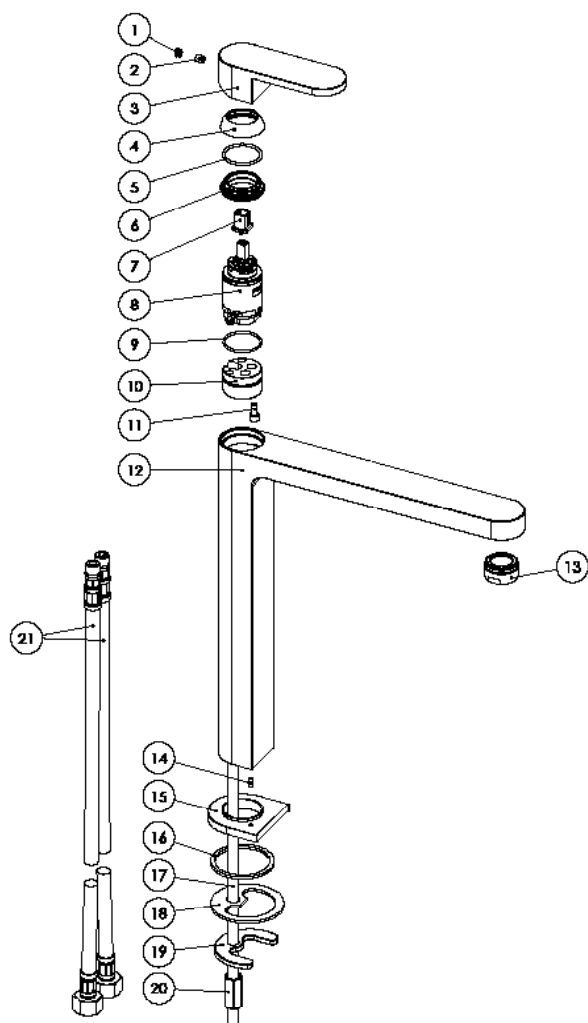


SERVICING - CARTRIDGE REPLACEMENT



Nobili Up Extended Basin Mixer Chrome (5 Star)

EXPLODED VIEW



Item	Description
1	Chrome Cover
2	Grub Screw
3	Mixer Handle
4	Cartridge Dome
5	O-Ring
6	Cartridge Lock Nut
7	Thermal Barrier
8	Cartridge
9	O-Ring
10	Cartridge Mounting Block
11	Bolt
12	Mixer Body
13	Aerator Complete
14	Dress Ring Locating Pin
15	Dress Ring
16	Rubber Sealing Washer
17	Fixing Rod
18	Plate Washer
19	Horse Shoe Plate
20	Hex Nut
21	Flexible Hoses