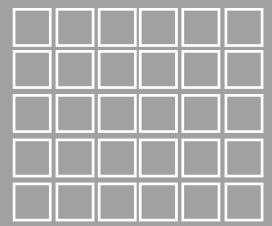
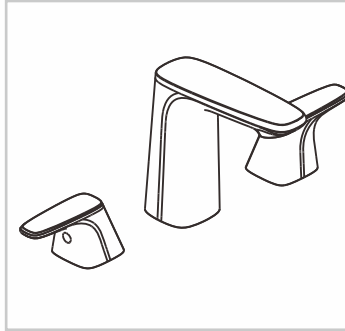


To ensure that your installation proceeds smoothly,  
please read this instructions carefully before you begin.

*American Standard*

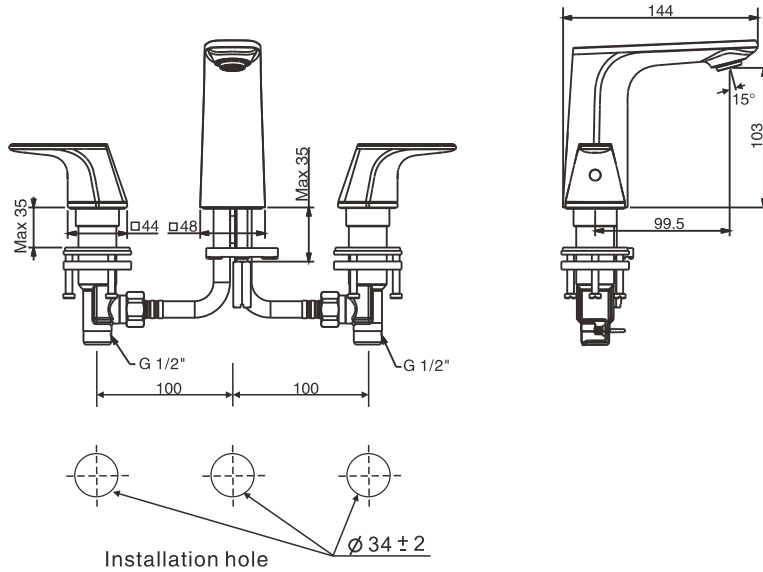
## Signature

FFAS1703-101500ZNO  
Basin Mixer (3 hole)



Installation &  
Operation Instruction

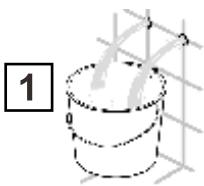
## Dimension



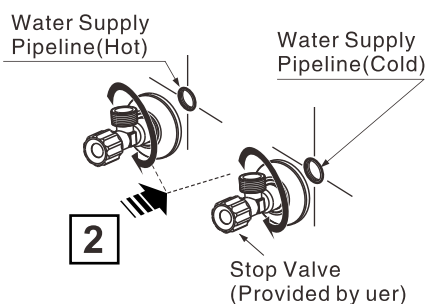
Unit: mm

## Installation

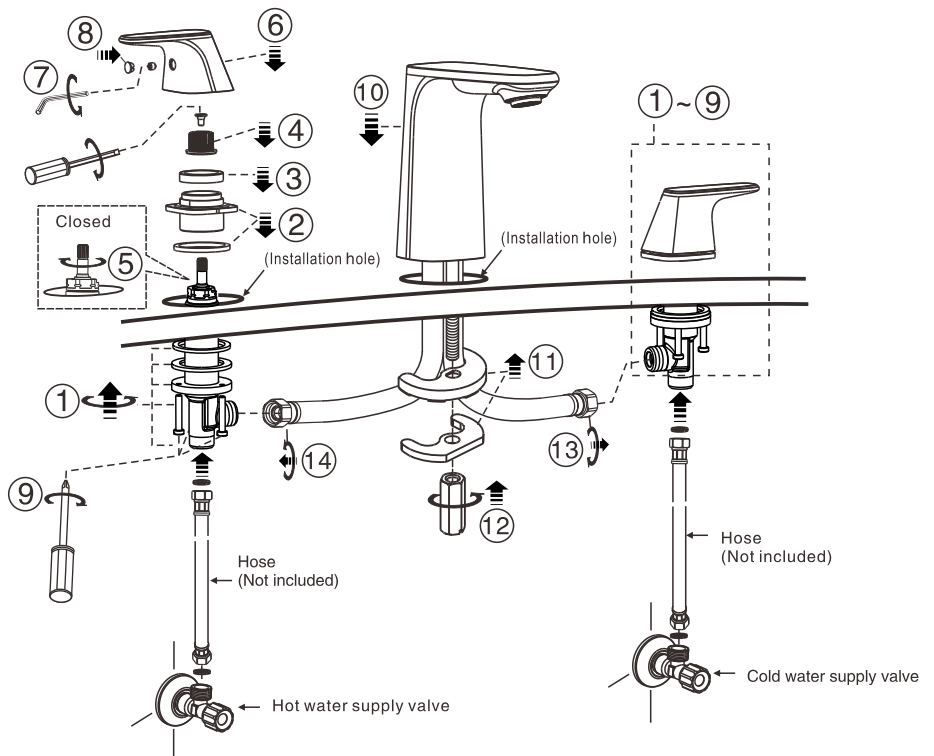
### 1 Preparation



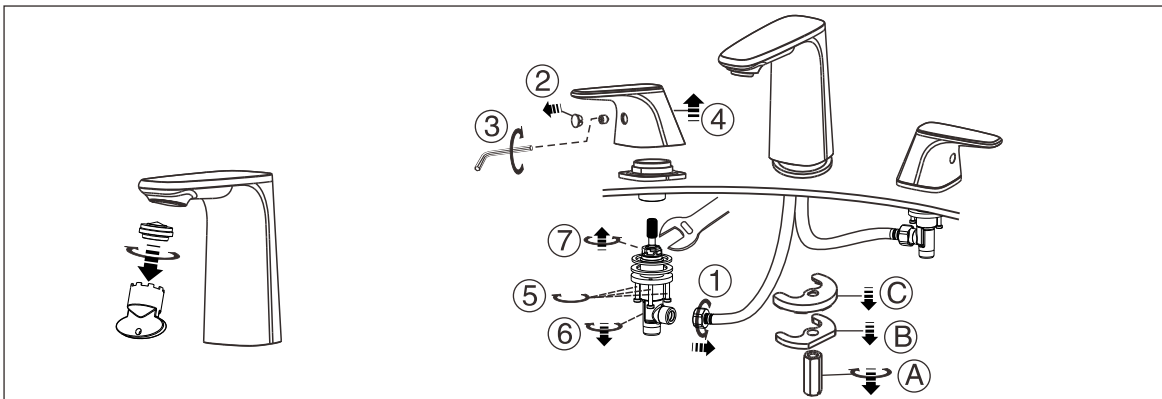
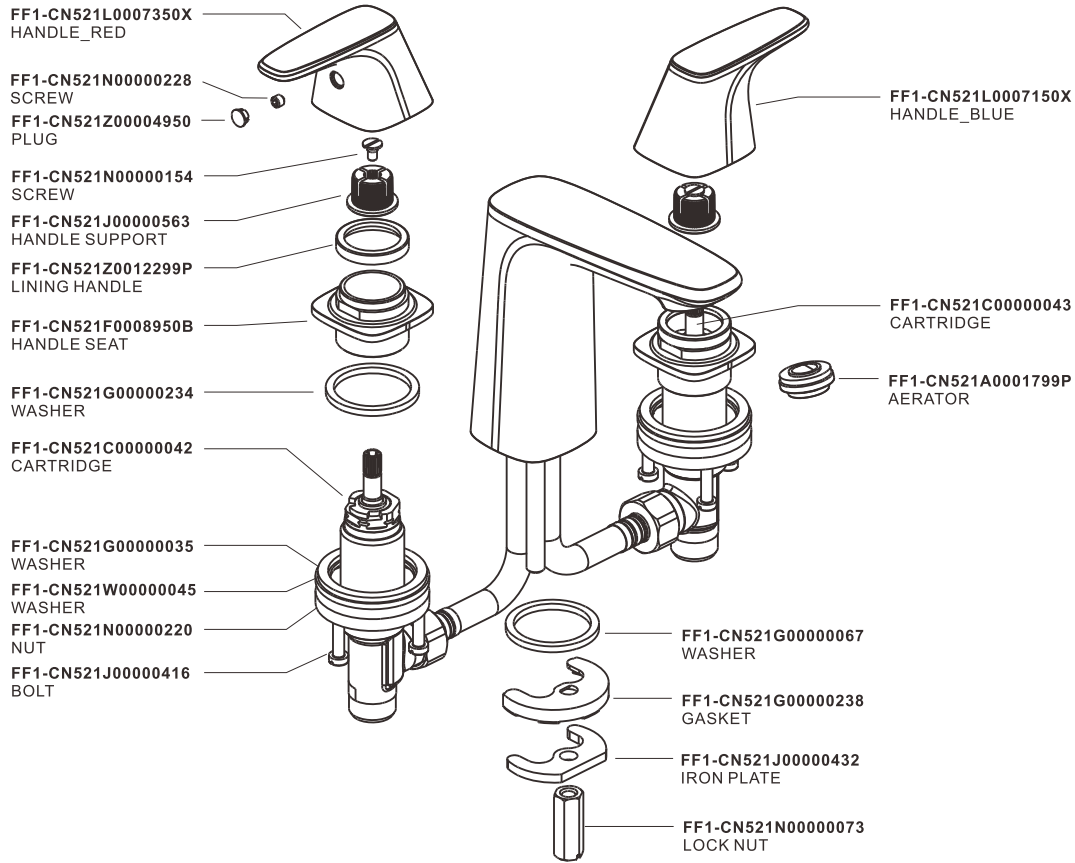
- \* Consult the dimension drawing and lay the pipes.
- \* Wash and clean the water supply pipeline.



### 2 Faucet Installation



# Parts List



## Notice

- \* Remove all impurity in pipes before beginning to avoid clogging. Connect faucet pipes correctly.
- \* Check installation distances in the Dimension diagram to ensure correct installation.

### Conditions for use

- \* Recommended water pressure condition: 0.1~0.5Mpa.
- \* Environment Temperature: 1~55°C
- \* Steam is not allowed to use.
- \* The cold and hot water pipes must not be reversed.

When in the process of installation, Please grab the body. Do not grab handle only.

**AUS**

Reece Australia Pty Ltd  
118 Burwood Hwy  
Burwood VIC 3125

Tel.: 1800 080 055

Email: [customercare@reece.com.au](mailto:customercare@reece.com.au)



**NZ**

Robertson  
25 Vestey Drive  
Mt Wellington, Auckland

Tel.: +64 9 5730490

Email: [sales@robertson.co.nz](mailto:sales@robertson.co.nz)