

A + L x ADP

# FLO - WALL HUNG VANITY



## SPECIFICATIONS

<b>Recommended Use</b>	Domestic, Hotel and Commercial
<b>Vanity Top &amp; Splashback Material</b>	Cherry Pie Solid Surface (20mm) or Friday™ Hybrid Quartz (20mm) or Caesarstone® (20mm).  Basin sold separately.  For more information please refer to the Colour Finish and Material Variations Document.
<b>Vanity Unit Material</b>	MDF MR E0 (Medium Density Fibreboard, Moisture Resistant, Rated Emission Level E0)
<b>Vanity Colour Variations</b>	Ultra White Matte Aston White Smooth Topiary Smooth Adriatic Smooth  For more information please refer to the Colour Finish and Material Variations Document.
<b>Interior Finish</b>	Graphite Grey
<b>Tap Hole Availability</b>	0, 1 or 3 Tap Holes (pending basin selection)
<b>Waste</b>	Chrome Universal Plug & Waste 40mm Outlet (included).
<b>Fixing</b>	Bolted/Screwed to the wall by a licensed tradesperson-Fixings not included.
<b>Drawers/Inclusions</b>	Hettich AvanTech YOU drawers in anthracite.
<b>Handle Options</b>	Francis Handles available in <i>Brass, Matte Black, Matte White, or Brushed Nickel.</i>



Handles



To see the complete ADP X A&L range go to [www.reece.com.au/bathrooms](http://www.reece.com.au/bathrooms)

STANDARD SIZES	750mm	900mm	1200mm	1500mm	1500mm	1800mm	1800mm
Width (mm)	752	904	1198	1502	1502	1796	1796
Depth (mm)	500	500	500	500	500	500	500
Wall Hung Height (mm)	547	547	547	547	547	547	547
Number of Drawers	1	1	2	2	2	3	3
Basin Configurations	Centre	Centre	Centre/ Offset	Centre/ Offset	Double	Centre/ Offset	Double

**Disclaimer:** Products in this specification manual must by regulation be installed by licensed and registered trade people. The manufacturer/distributor reserves the right to vary specifications or delete models from their range without prior notification. Dimensions are nominal measurements only. Dimensions and set-outs listed are correct at time of publication however the manufacturer/distributor takes no responsibility for printing errors.

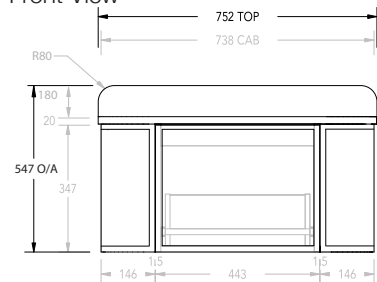
Tech Page Version 1

A + L x ADP

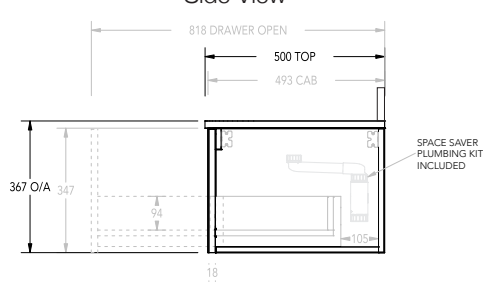
# FLO - WALL HUNG VANITY

## 750mm

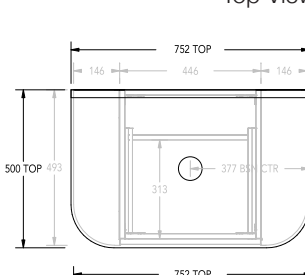
Front View



Side View

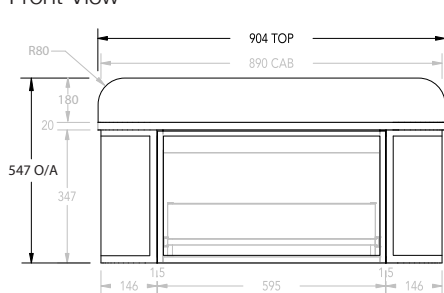


Top View

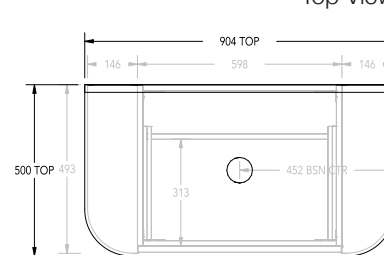


## 900mm

Front View

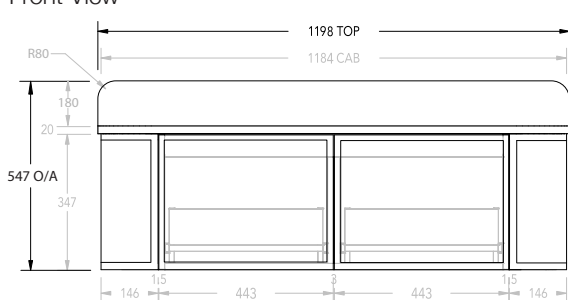


Top View

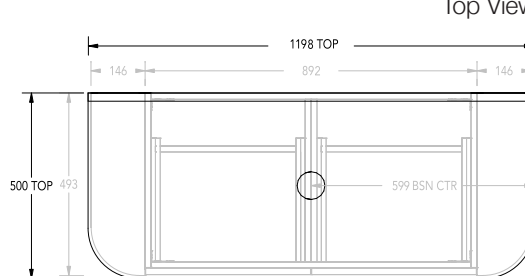


## 1200mm Centre

Front View

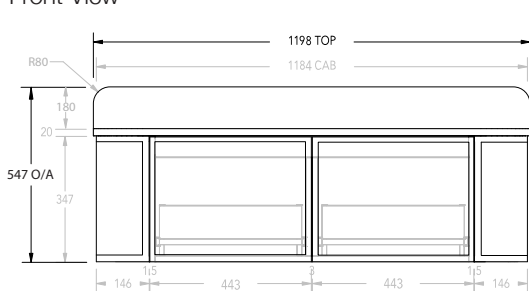


Top View

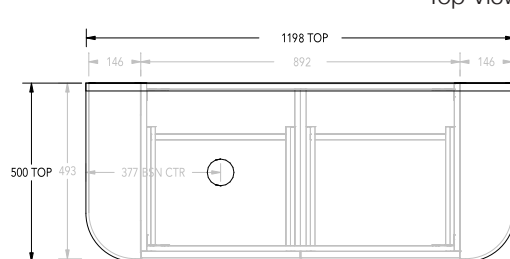


## 1200mm Offset

Front View

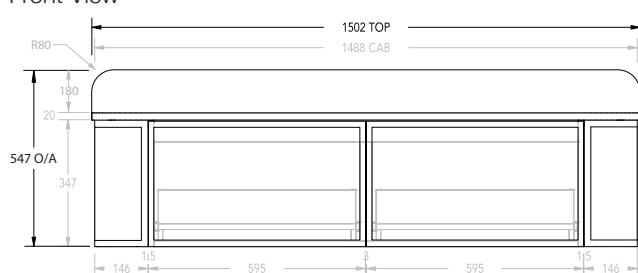


Top View

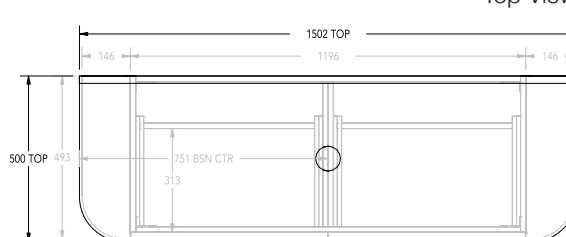


## 1500mm Centre

Front View



Top View



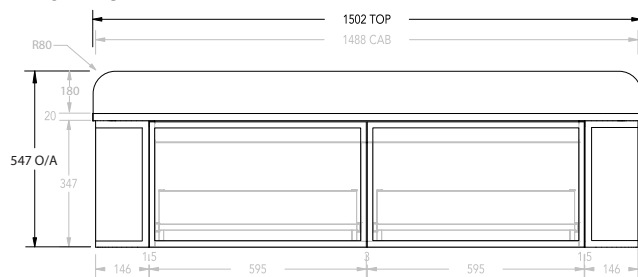
Dimensions are nominal measurements only.

A + L x ADP

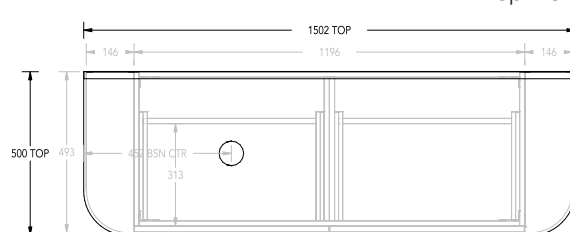
# FLO - WALL HUNG VANITY

## 1500mm Offset

Front View

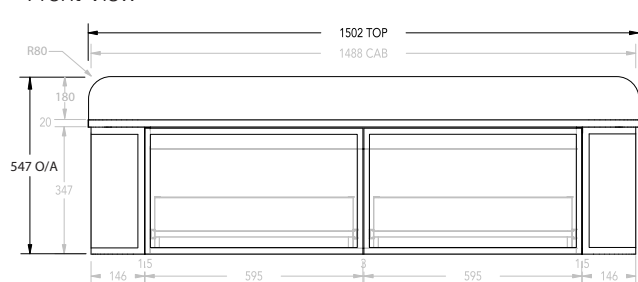


Top View

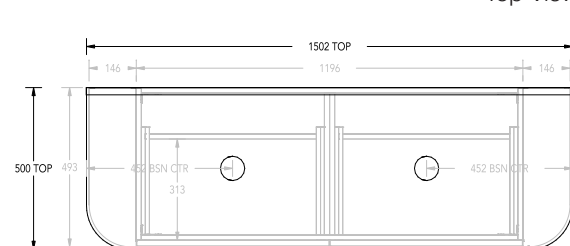


## 1500mm Double

Front View

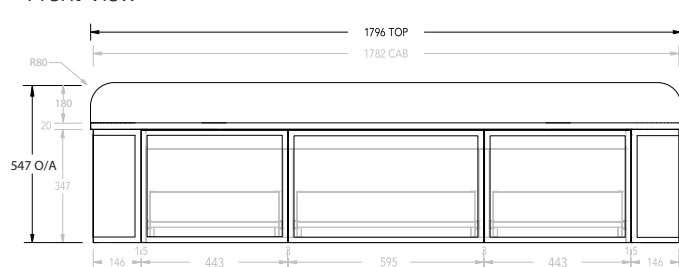


Top View

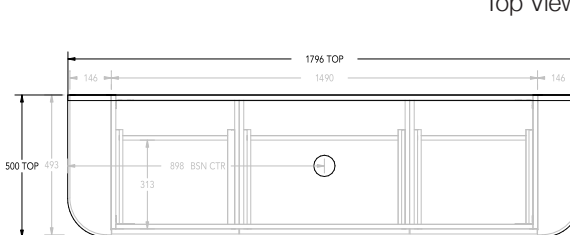


## 1800mm Centre

Front View

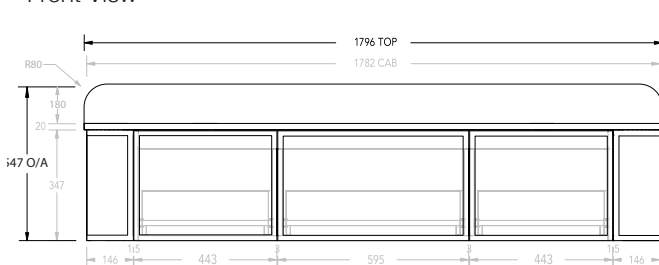


Top View

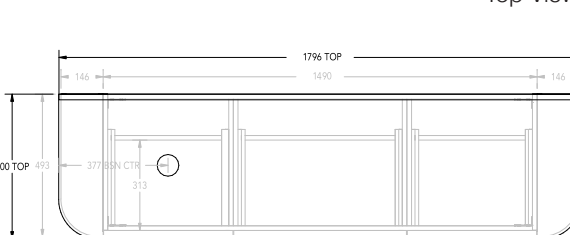


## 1800mm Offset

Front View

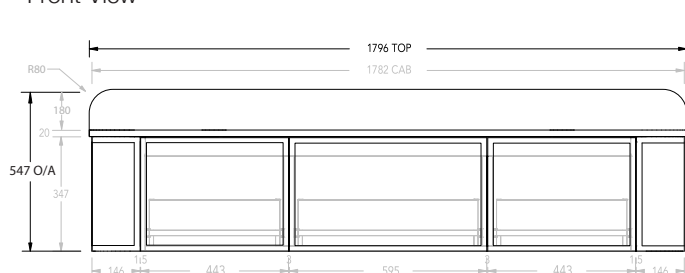


Top View



## 1800mm Double

Front View



Top View

