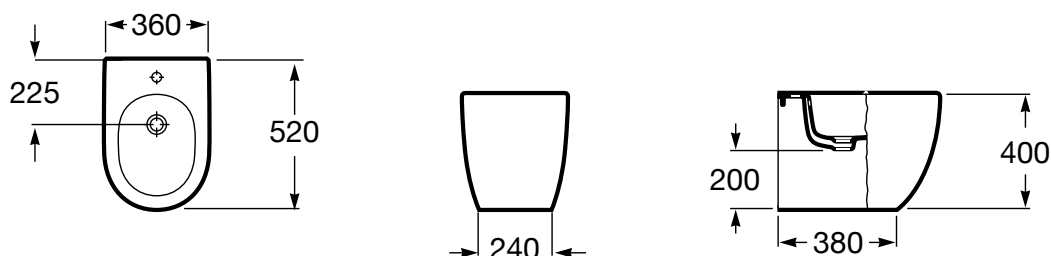


# ROCA

## MERIDIAN BACK TO WALL BIDETTE



Dimensions are nominal measurements only

### SPECIFICATIONS

<b>Recommended Use</b>	Domestic, Hotel and Commercial
<b>Material</b>	Vitreous china
<b>Colour</b>	White
<b>Weight</b>	23.4kg
<b>Fixing</b>	Screwed to the floor and bedded with sealant
<b>Overflow</b>	Integrated overflow
<b>Taphole Availability</b>	1 Taphole
<b>Bidet Cover</b>	Optional, sold separately



To see the complete ROCA range go to  
[www.reece.com.au/bathrooms](http://www.reece.com.au/bathrooms)

### CLEANING RECOMMENDATIONS

We recommend the use of soapy water or approved cleaners.

This product should not be cleaned with abrasive materials.

Damage caused by any improper treatment is not covered by the product warranty- Refer to Warranty Conditions.

# ROCA

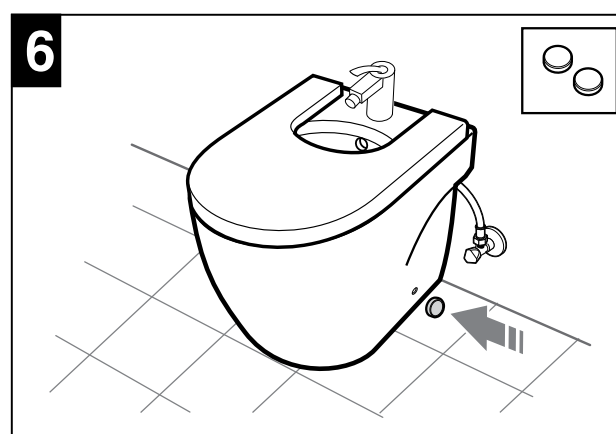
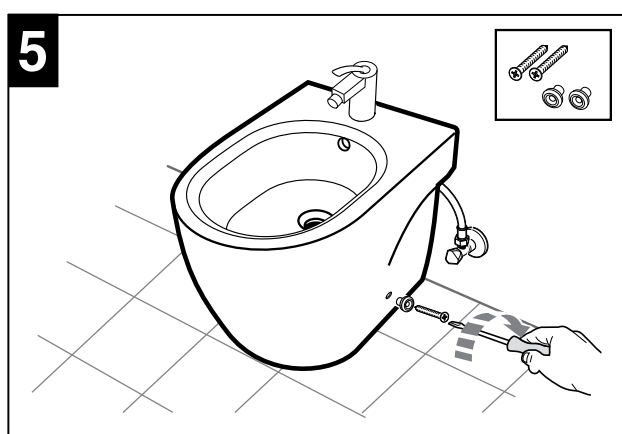
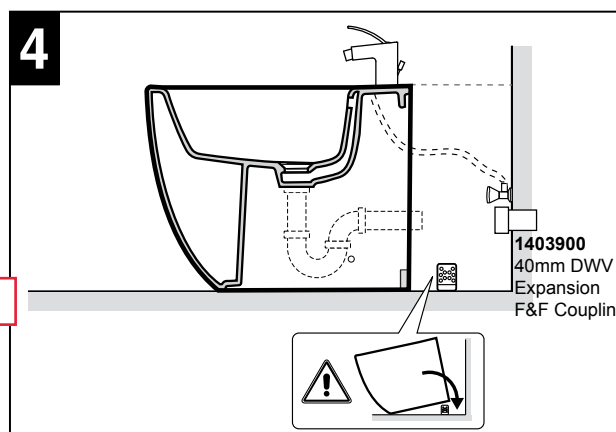
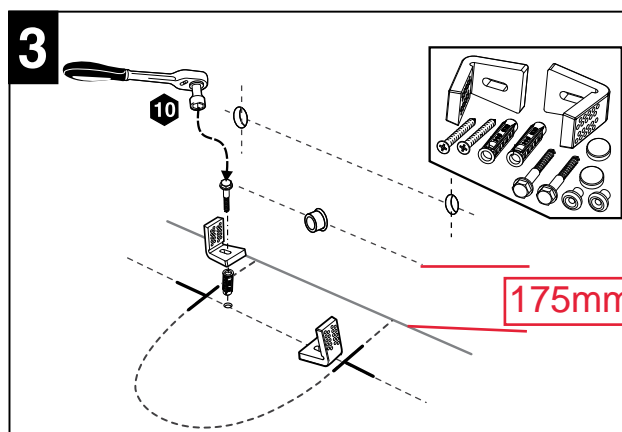
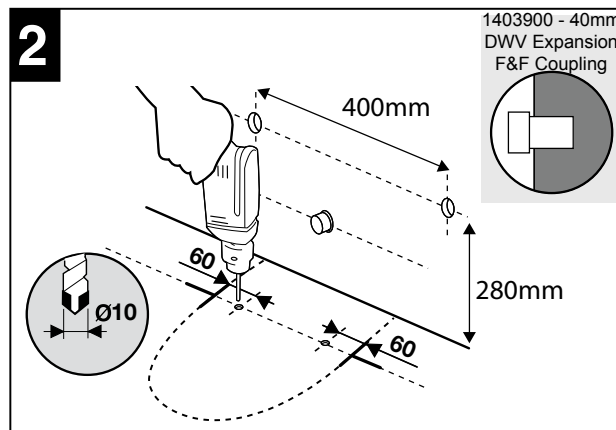
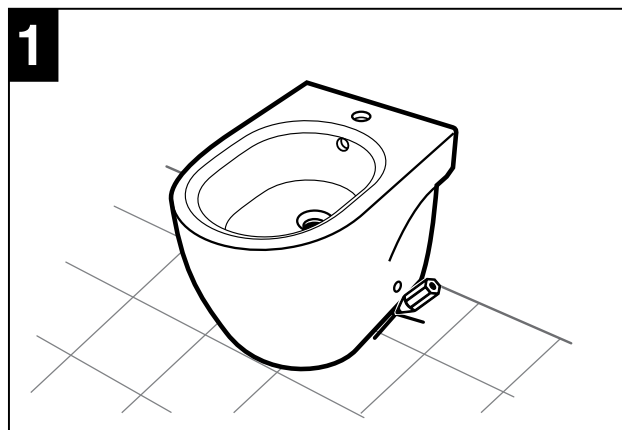
## MERIDIAN BACK TO WALL BIDETTE

### INSTALLATION INSTRUCTIONS

**NOTE:** It is recommended that a short trap is used for installation.

Waste setout measurement will depend on waste used.

Cover is optional, if cover is used it **MUST** be installed before Bidette is fixed to the wall.



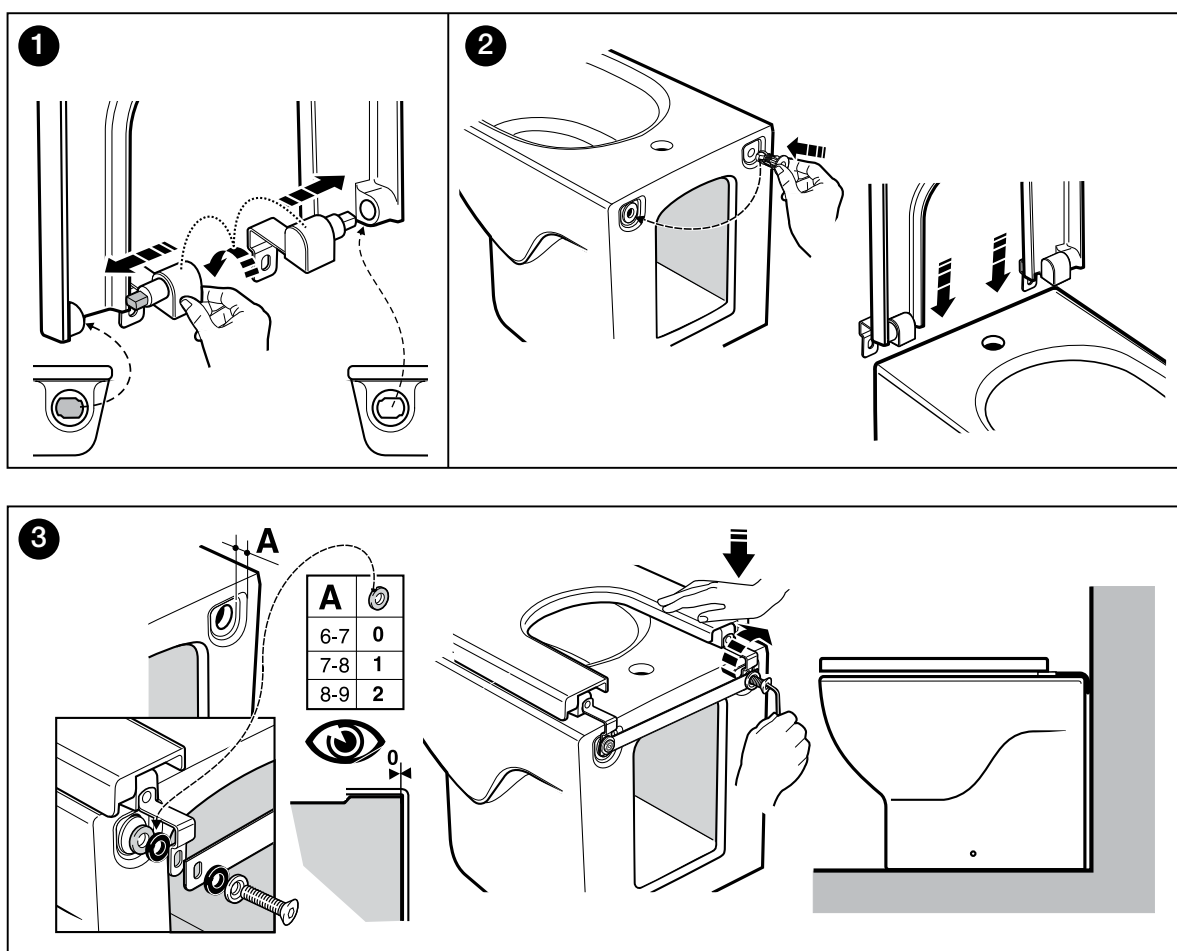
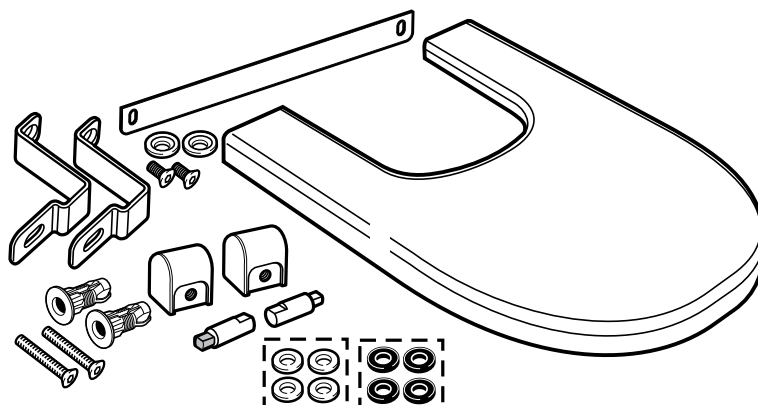
1403900 DWV Expansion assembly F and F 40mm.

# ROCA

## MERIDIAN BACK TO WALL BIDETTE

### BIDETTE COVER INSTALLATION INSTRUCTIONS

**NOTE:** Cover is optional, if cover is used it MUST be installed before Bidette is fixed to the wall.



Plumbers, please ensure a copy of the installation instructions is left with the end user for future reference