

Posh Solus Mini Wall Basin 485mm

INSTALLATION INSTRUCTIONS

Counter Top Installation

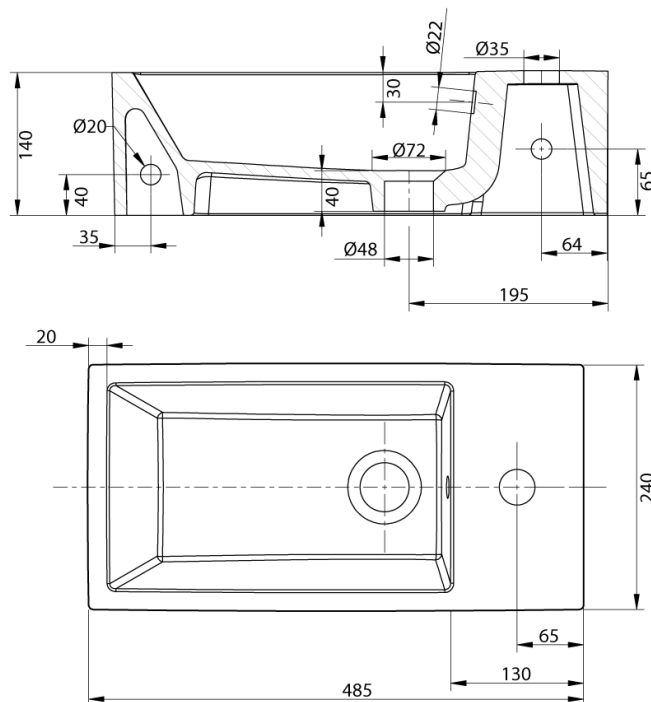
Rear of basin is punched for wall fixing bolts. Any counter top installation is recommended against the wall.

1. Use basin as cutout template and cut 20mm in from traced line.
2. Fit selected tapware and waste to basin. Ensure waste is sealed using flexible sealant around the rim.
3. Apply waterproof sealant to rim of basin.
4. Locate basin complete with fittings onto bench top and press firmly all around.
5. Remove excess sealant.

Wall Installation

If fixing to timber framed walls or partitioning the wall should be reinforced with noggin to receive fixing bolts.

1. Drill holes into wall at desired height and fixing centres and install fixing bolts supplied.
2. Fit selected tapware to basin. Fit the waste to basin ensuring it is sealed with flexible sealant on top.
3. Carefully align basin complete with fittings onto protruding bolts.
4. Insert nylon bushes and locking nuts supplied and partially tighten lock nuts to hold basin into position. Make minor adjustments at this stage and ensure basin is level and then fully tighten lock nuts. Do not over tighten.
5. If desired all visible external edges can be joint sealed using flexible sealant ensuring to wipe off any excess.



Dimensions are nominal measurements only.

Please ensure a copy of the installation instructions is left with the end user for future reference.