

KADO

Lux Rimless Plus Wall Hung Pan (4 Star)

Wall-Hung Pan Installation Instructions

NOTE: All measurements for roughing in should be taken from the finished wall/floor.

Important:

- Once inwall cistern and brackets have been installed as per manufacture's installation instructions, please implement the following steps to install pan.

Its important that the frame and bracket system sits flush against back of finished wall.

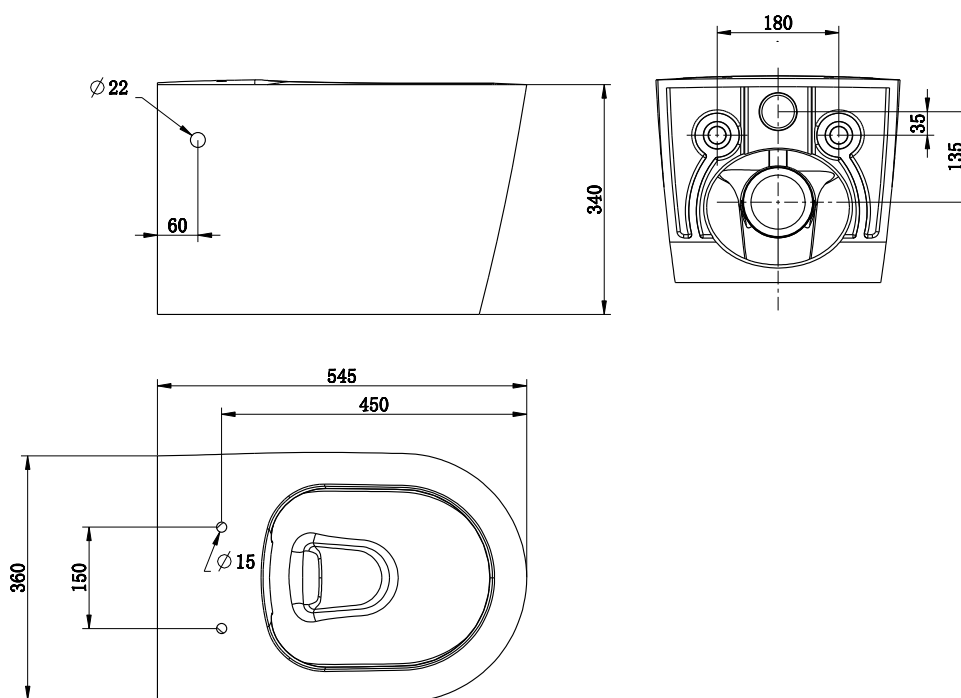
- Note:** In all circumstances the wall onto which the pan is mounted shall be capable of supporting the pan and load without deflection

1. Cut flush pipe and outlet pipe to correct length
2. Ensure inlet and outlet pipe are securely fixed into place prior to installing pan (lubricate kee seal and outlet seal for easier installation)
3. Fit pan with wall hung fixing brackets supplied with pan, follow the instructions enclosed with brackets.

(Wall-hung Pan Fixing Bracket (IN-WALL))

4. Flush test for leaks
5. Joint seal pan to wall using silicone
6. Install soft closing toilet seat

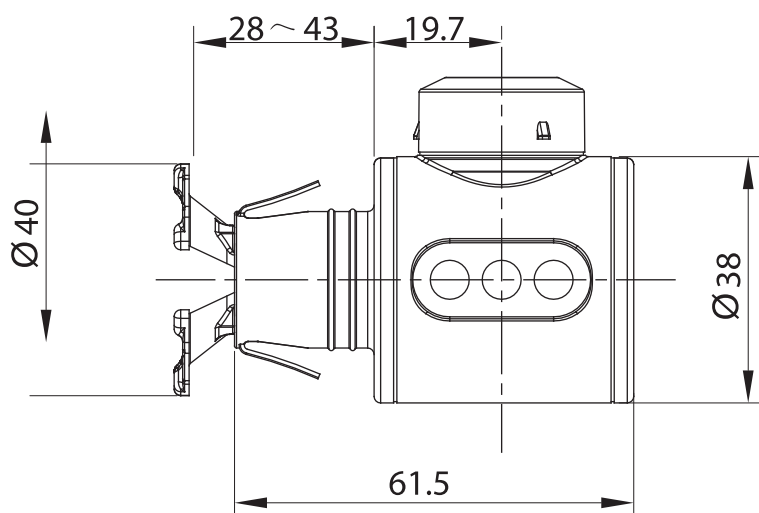
- Any installation should be carried out by a qualified tradesman with knowledge of statutory plumbing requirements in your area.



Dimensions are nominal measurements only.

Lux Rimless Plus Wall Hung Pan (4 Star)

Wall-Hung Pan Fixing Bracket (IN-WALL)

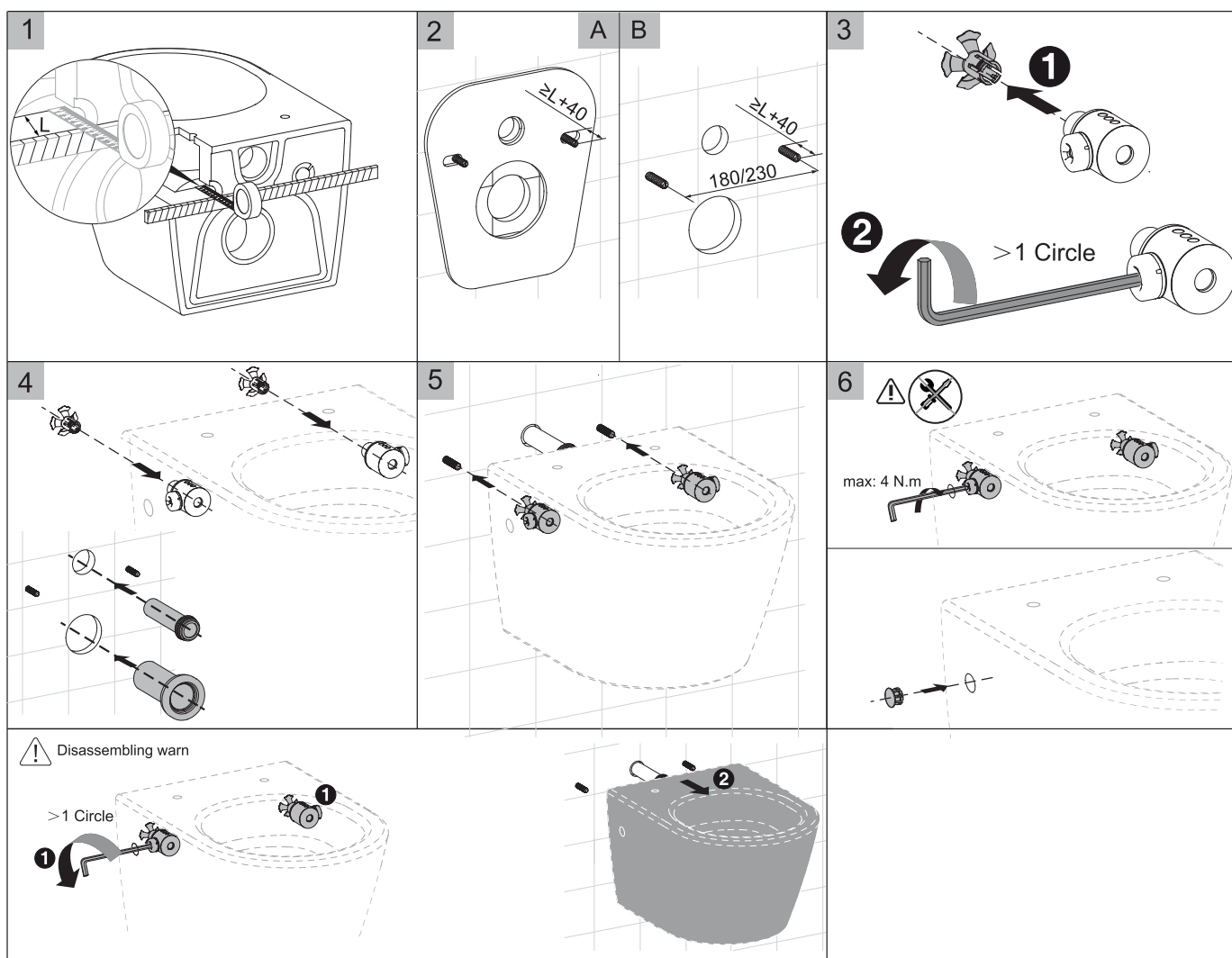


SPECIFICATIONS

Pan Thickness Installation Range	28-43mm (Standard) 19-34mm (Option)
Pan Installation Hole Diameter Range	Ø22-Ø28mm
Static Load Testing	400kg
Dynamic Lift Testing	Loading is 2500N

Lux Rimless Plus Wall Hung Pan (4 Star)

Wall-Hung Pan Fixing Bracket (IN-WALL)



Dimensions are nominal measurements only.

Care Details

We recommend the use of soapy water or approved cleaners. This product should not be cleaned with abrasive materials. Damage caused by any improper treatment is not covered by the product warranty - refer to Warranty Conditions.

Plumbers, please ensure a copy of the installation instruction is left with the end user for future reference.

