

KADO

Specification Sheet

Lussi Basin - Side Shelf



SPECIFICATIONS

Recommended Use	Domestic, Hotel & Commercial
Material	Solid Surface
Finish	Matte
Colour	White
Basin Type	Wall Mounted
Basin Configuration	LH Bowl, RH Bowl or DBL Bowl
Fixing	Bolted/screwed to wall by licensed trades person Basin fixing kit supplied
Tap Hole Availability	Single basin: 0 or 1 tap hole Double basin: 0 or 2 tap holes
Overflow	Yes
Waste	Supplied with 32-40mm waste with white s/surface plug
Trap	Sold separately



STANDARD SIZES	420	700	900	1200	1500 SGL	1500 DBL	1800 DBL
Width (mm)	420	700	900	1200	1500	1500	1800
Depth (mm)	280	480	480	480	480	480	480
Height (mm)	300	80	80	80	80	80	80
Weight (kg)	17	16	20	26	32	31	38
Capacity (lt)	1.2	4.6	4.6	4.6	4.6	4.6 (x2)	4.6 (x2)
Bowl Configuration	Left/Right	Left/Right	Left/Right	Left/Right	Left/Right	Double	Double
Tap Hole	0 or 1	0 or 1	0 or 1	0 or 1	0 or 1	0 or 2	0 or 2
DDA Compliant	No	Yes	Yes	Yes	Yes	Yes	Yes

Please note: For Lussi 420 basins we recommend using an outlet that uses 6 litres per minute or less.

Dimensions are nominal measurements only.

Disclaimer: Products in this specification manual must by regulation be installed by licensed and registered trade people. The manufacturer/distributor reserves the right to vary specifications or delete models from their range without prior notification. Dimensions are nominal measurements only. Dimensions and set-outs listed are correct at time of publication however the manufacturer/distributor takes no responsibility for printing errors.

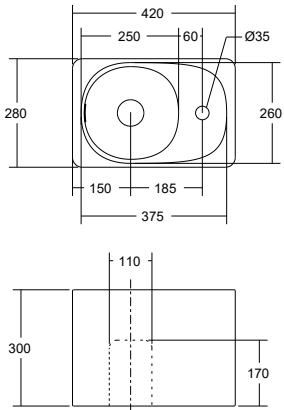
Published 12/09/2022



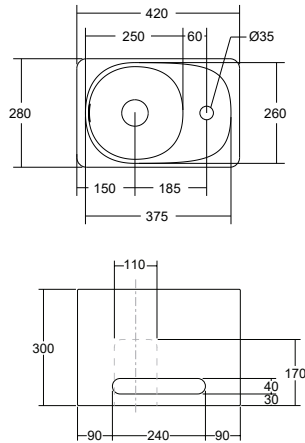
Lussi Basin - Side Shelf

Please note: drawings of vanities with single left hand bowls are also available with right hand bowls. Reverse details for right hand bowls.

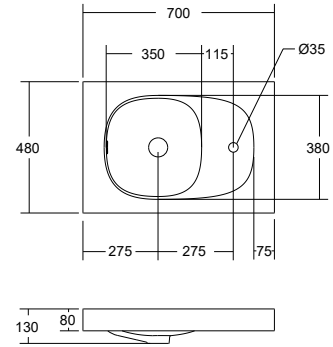
**Lussi 420 Basin
(No hand towel slot)**



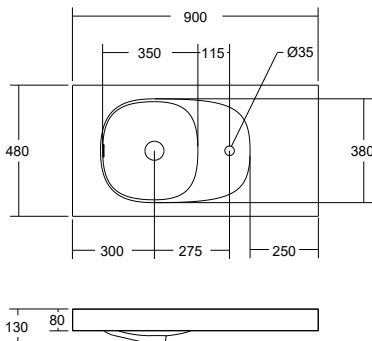
**Lussi 420 Basin
(With hand towel slot)**



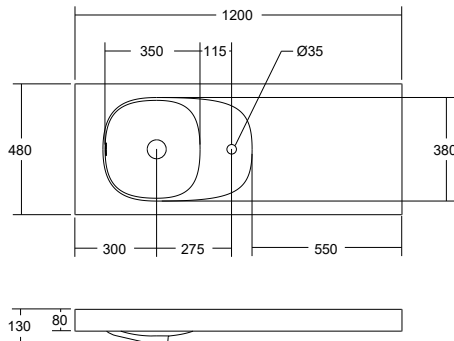
Lussi 700 Basin



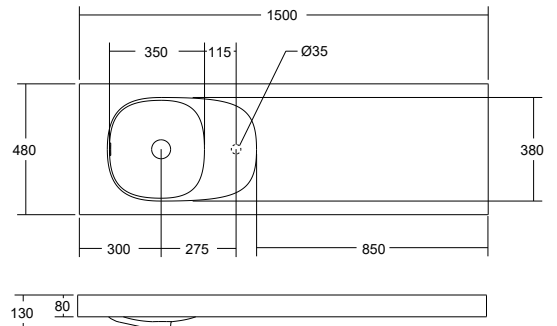
Lussi 900 Basin



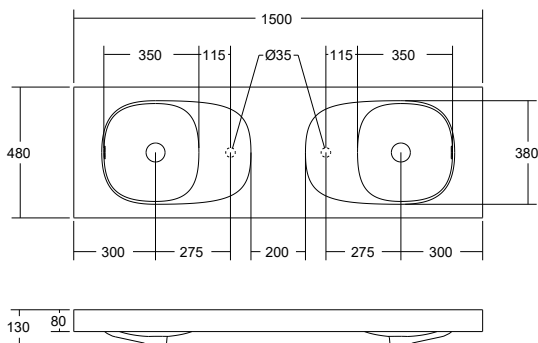
Lussi 1200 Basin



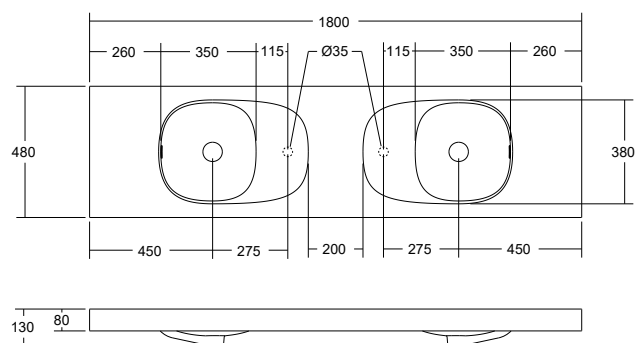
Lussi 1500 SGL Basin



Lussi 1500 DBL Basin



Lussi 1800 DBL Basin



Dimensions are nominal measurements only.

Disclaimer: Products in this specification manual must by regulation be installed by licensed and registered trade people. The manufacturer/distributor reserves the right to vary specifications or delete models from their range without prior notification. Dimensions are nominal measurements only. Dimensions and set-outs listed are correct at time of publication however the manufacturer/distributor takes no responsibility for printing errors.

Published 12/09/2022