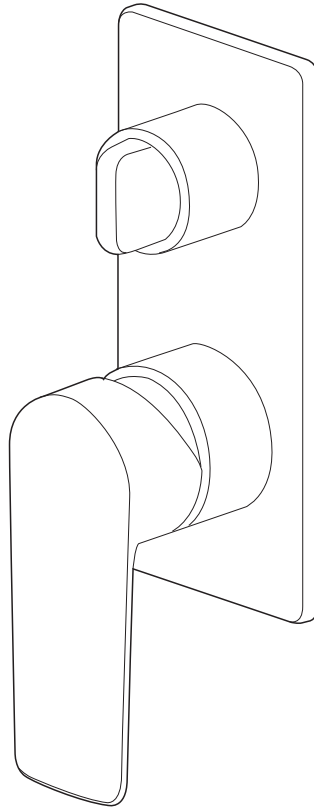
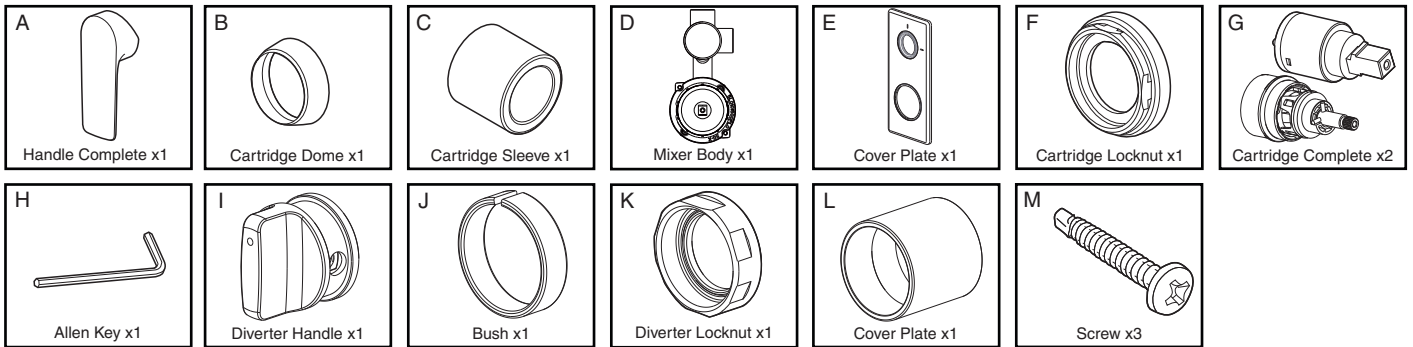




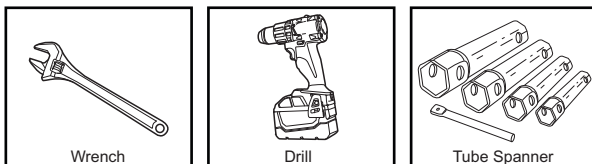
Milli Trace Shower Mixer With Diverter



Components Supplied



Tools Required



Installation Instructions



Mixer must be installed to the requirements of AS/NZS 3500 by a qualified plumber. The mixers are factory tested and sealed so as to give the best performance.



Milli Trace Shower Mixer With Diverter

Installation

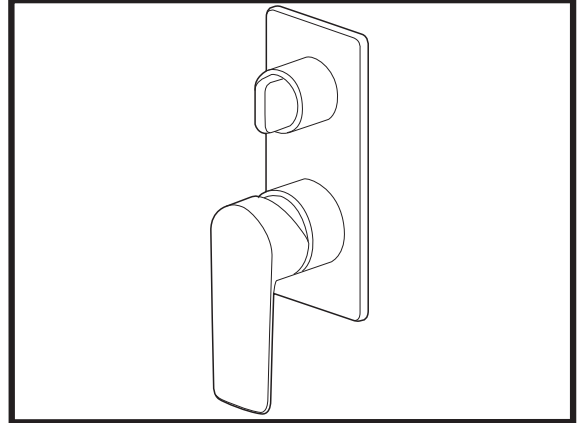


Flush out new pipe work prior to connecting the new mixer.



During installation, protect the exposed surface finish by using the plastic covers provided.

Note: This tap is suitable for high pressure applications where both hot and cold water supply pressures are at 150kpa or above.



- In a typical installation, the mixer is mounted onto timber/metal noggins (1) and secured with screws.
- Screw the body (2) in place, connect water supplies (3) and water outlets (4).

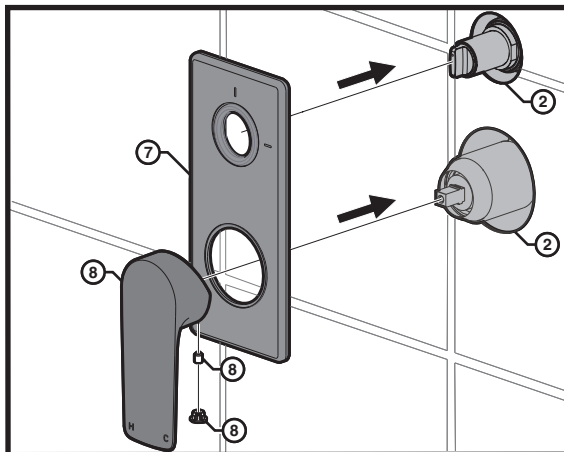
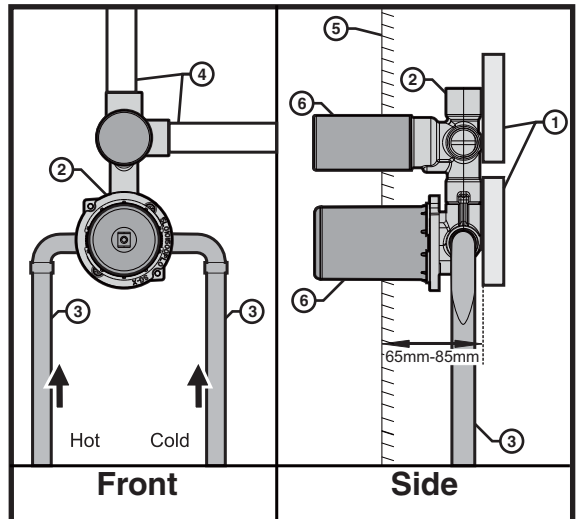
Note: Pressure check all connections.

Note: Ensure top outlet connects to main shower (4)



Leaking joints are not covered by the warranty.

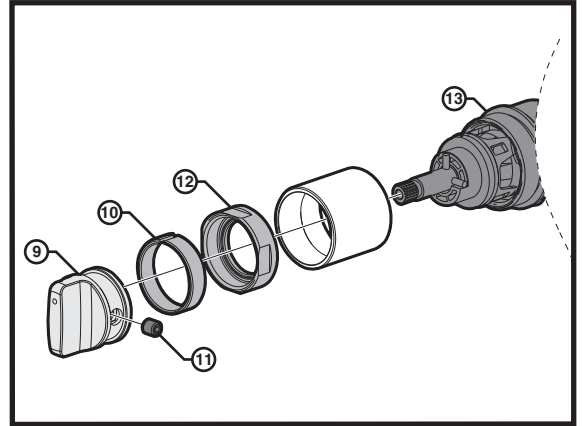
- Once finished wall (5) is completed remove protective covers (6).
- Fit Cover Plate (7) and Mixer handle (8).



Milli Trace Shower Mixer With Diverter

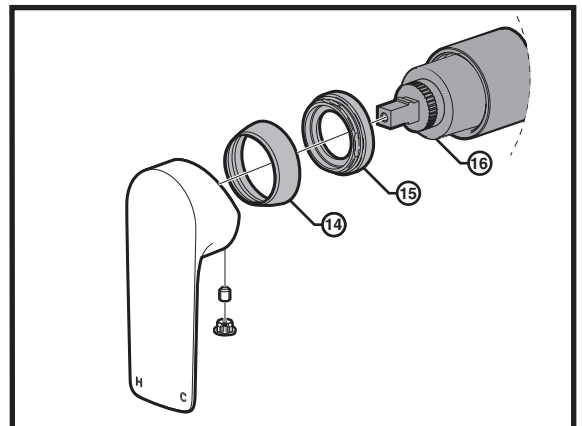
Servicing - Replacement of Diverter

- Disassemble Handle by removing decorative cover, grub screw and Handle.
- Remove Cover Plate.
- Remove Diverter Sleeve (9).
- Note: Ensure to protect sleeve surface while removing.**
- Remove Plastic Ring (10) from Diverter Handle (9).
- Using supplied allen key to remove Diverter Handle Grub Screw (11).
- Use Tube Spanner to remove Diverter Locknut (12).
- Remove and replace Diverter Cartridge (13).
- Reassemble in reverse order.



Servicing - Replacement of Mixer Cartridge

- Disassemble Handle by removing decorative cover, grub screw and Handle.
- Remove Cover Plate.
- Remove the Cartridge Dome (14), unscrew the Cartridge Locknut (15) and lift out Mixer Cartridge (16).
- Replace the Mixer Cartridge (16).
- Reassemble in reverse order.



Important !	Check for water leaks after installation
Important !	Maximum continuous operating temperature is 70 degrees.
Important !	Recommended pressure range is 150Kpa-500Kpa.

Care Details

We recommend the use of soapy water or approved cleaners. This product should not be cleaned with abrasive materials. Damage caused by any improper treatment is not covered by the product warranty. Refer to Warranty Conditions

Plumbers, please ensure a copy of the installation instruction is left with the end user for future reference.