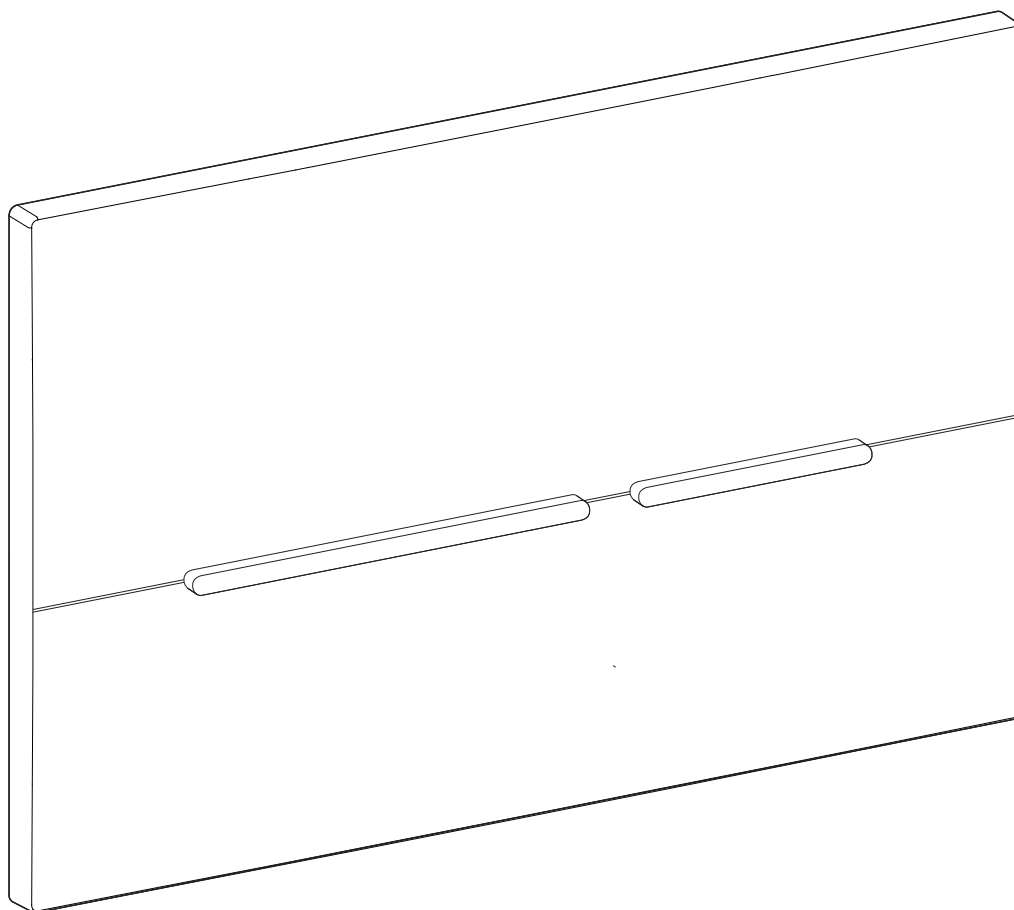
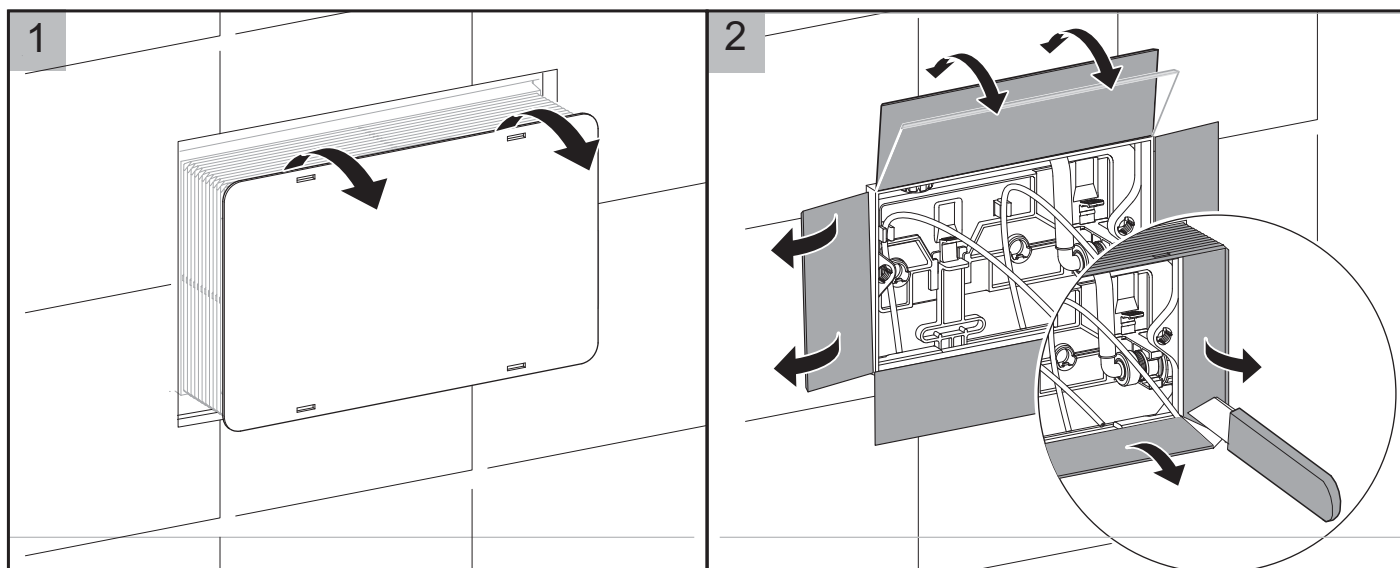


hideaway+

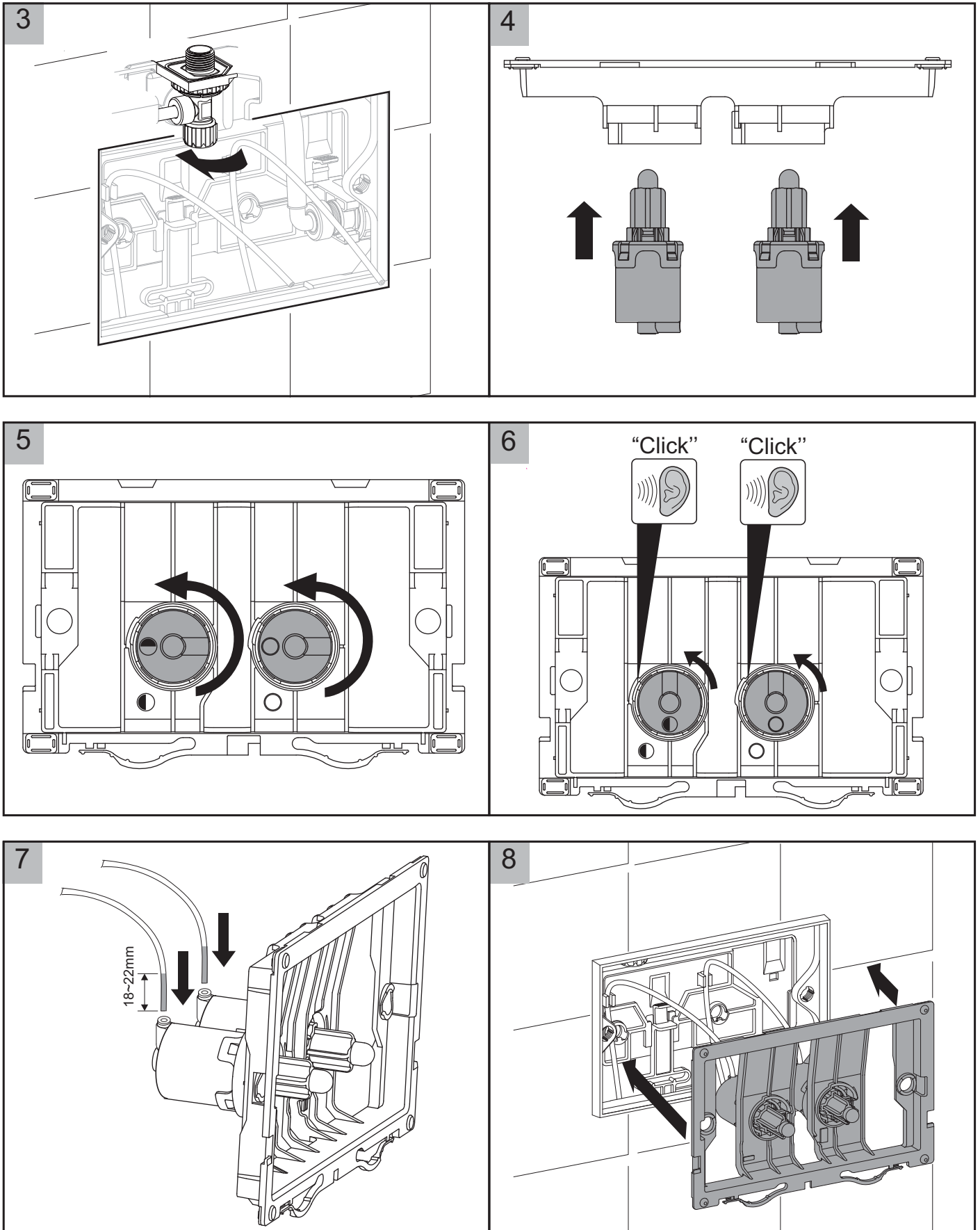
ABS Thin Button / Plate (In-wall)



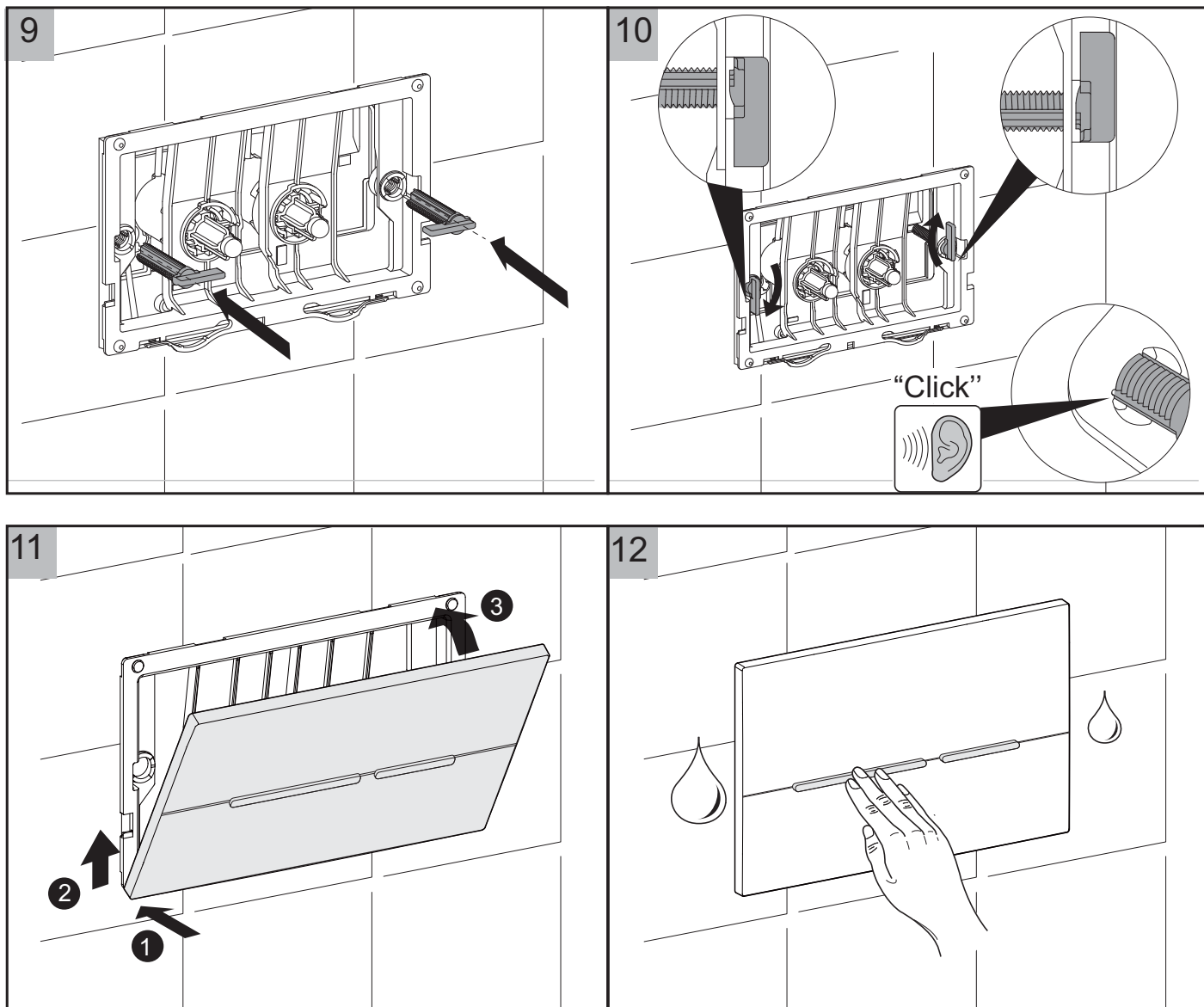
Installation



hideaway+



hideaway+



Care Details

We recommend the use of soapy water, soft cloth or approved cleaners.

This product should not be cleaned with abrasive materials.

Damage caused by any improper treatment is not covered by the product warranty - refer to Warranty Conditions.

Plumbers, please ensure a copy of the installation instruction is left with the end user for future reference.

