



Nobili Oz T7 L Pull Out Sink Mixer Chrome (4 Star)

NOTE

Mixer must be installed by a qualified plumber.

IMPORTANT

Your mixer comes to you already factory assembled and tested. We do not recommend the dismantling of any internal part of the mixer. The mixers are factory tested and sealed so as to give the best performance.

1. Please flush out new pipe work prior to connecting the new mixer.
2. All mixers should be installed with isolating stop cocks (Arco).
3. In some areas where the incoming water exceeds 500kpa, an approved pressure limiting device must be installed. Equal pressure for hot and cold water supply is required.
4. Mixers are recommended for use on mains pressure and instantaneous systems only.
5. Place dress ring (18) into body of mixer (8) and insert rubber washer (19).
6. Fit flexible connections (33) and mixer body (8) through sink hole making sure first the flexible tails (33) are tightened firmly into the mixer body.
7. Do not use Teflon tape on threads.
8. From underneath apply horse shoe rubber (24) prior to positioning the horse shoe plate (25) and hex nut (26).
9. Lock the mixer onto the sink by tightening the hex nut (26).
10. Connect the pull out hose handpiece (17) to the nylon flexible hose (15) ensuring that the rubber washer (16) is inserted and that a water tight seal is made. Feed the nylon flexible hose through the outlet.
11. Connect the nylon flexible hose (15) by tightening the adapting nipple (29) into the threaded bolt (23) making sure first to insert the seals for the adapting nipple (27 & 28).
12. Connect the hot and cold water supply with isolating stop cocks (Arco brand recommended). Check for leaks. Fit lead weight (32) to nylon hose (15) so that hand piece (17) fully retracts into the outlet (13).
13. Mixer includes double check valve fitted in the hand spray. Clean aerator at regular intervals, particularly if you notice a drop in pressure.

Plumbers, please ensure a copy of the installation instructions is left with the end user for future reference.



Nobili Oz T7 L Pull Out Sink Mixer Chrome (4 Star)

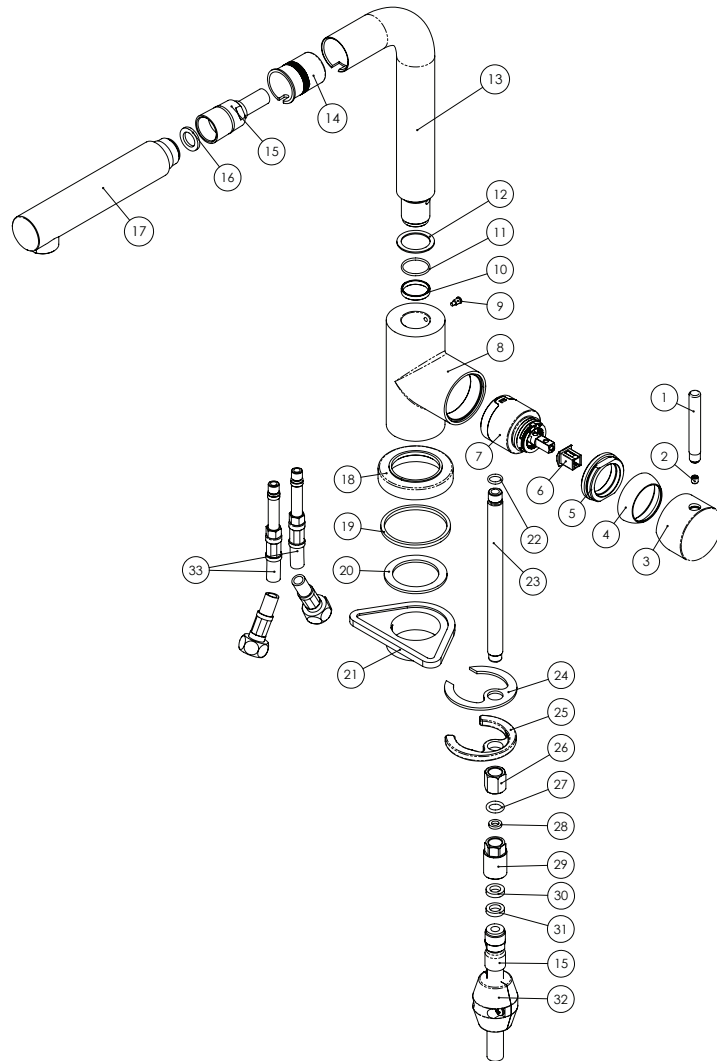


DIAGRAM NUMBER	DESCRIPTION
1	Lever
2	Grub Screw
3	Handle Body
4	Dress Ring for Cartridge
5	Cartridge Lock Nut
6	Thermo Cap
7	Cartridge
8	Mixer Body
9	Outlet Locking Screw
10-13	Outlet Fixing System
14	Outlet
15	Pull Out Hose
16	Rubber Washer

DIAGRAM NUMBER	DESCRIPTION
17	Hand Piece
18	Base Ring
19	Rubber Washer
20	Rubber Washer
21	Stabilising Plate
22	O-Ring
23	Threaded Rod
24	Horse Shoe Rubber
25	Metal Horse Shoe Plate
26	Locking Hex Nut
27-31	Hose Adaptor Kit 28
32	Lead Weight
33	Flexible Hose (Hot & Cold)