

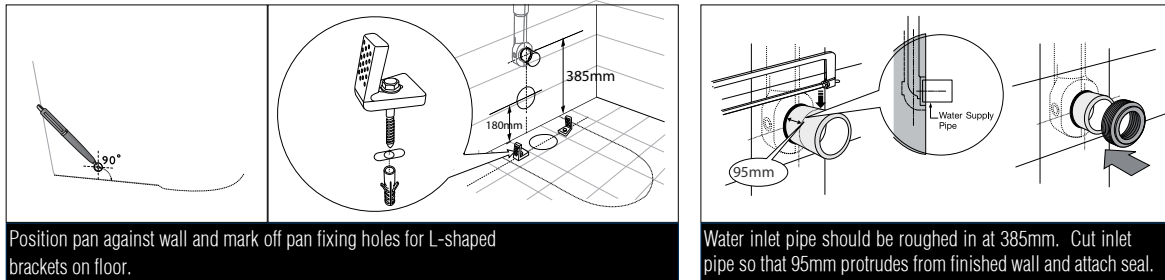
KADO

Kado Lux Rimless Back to Wall Overheight Pan (4 Star)

INSTALLATION INSTRUCTIONS

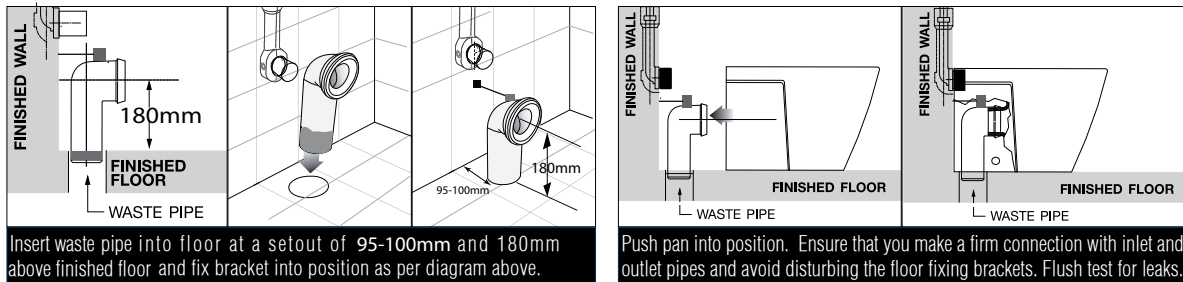
- Note:** All measurements for roughing in should be taken from the finished wall/floor

Fixing bracket & Water inlet

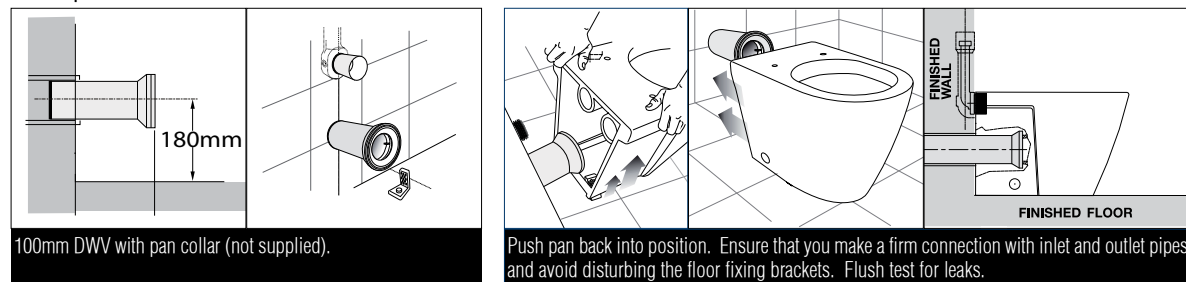


S-Trap Installation

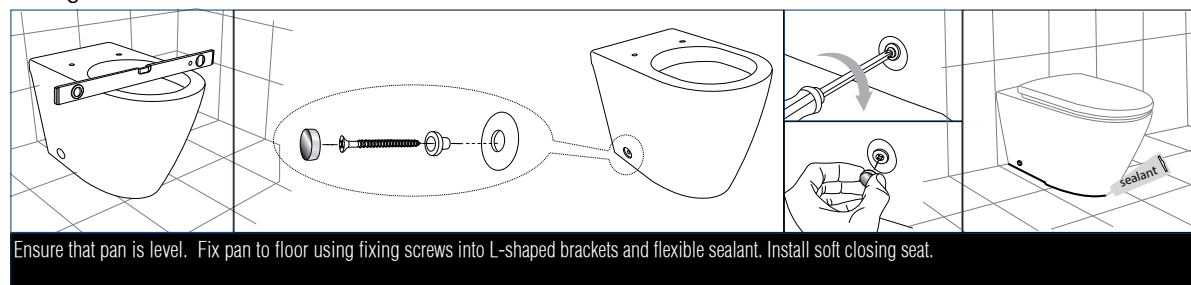
NOTE: This is a set out of 95-100mm



P-Trap Installation



Fixing Pan to Floor



Dimensions are nominal measurements only.

Plumbers, please ensure a copy of the installation instructions is left with the end user for future reference.

Published 10/12/2020