

TASMAN MIRROR CABINET



To see the complete Rifco range go to
www.reece.com.au/bathroom

SPECIFICATIONS

Recommended Use	Domestic, Commercial and Hotel
Materials	Cabinetry - Moisture Resistant Melamine Board. Copper Free Glass Mirror
Cabinet Finish	External: Polyurethane or Polytec Laminate Options. Internal: Moisture Resistant Melamine Board
Fixing	Bolted to wall by Licensed Tradesperson
Features	Fingerpull Recess to open. Soft Close doors. 3 Adjustable Glass Shelves (per cabinet)
Additional Options	Mirror also available in Bevelled edge.

STANDARD SIZES

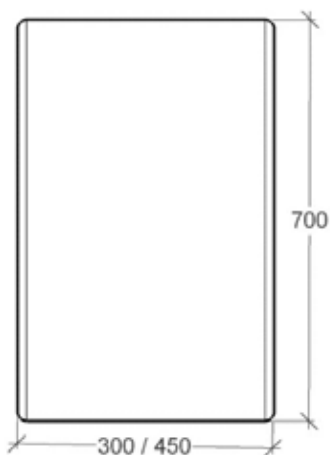
Width (mm)	300	450	600	750	900	1200	1500
Depth (mm)	130	130	130	130	130	130	130
Height (mm)	700	700	700	700	700	700	700
No. of doors	1	1	2	2	2	3	4

Disclaimer: Products in this specification manual must by regulation be installed by licensed and registered tradespeople. The manufacturer/distributor reserves the right to vary specifications or delete models from their range without prior notification. Dimensions are nominal measurements only. Dimensions and setouts listed are correct at time of publication however the manufacturer/distributor takes no responsibility for printing errors.

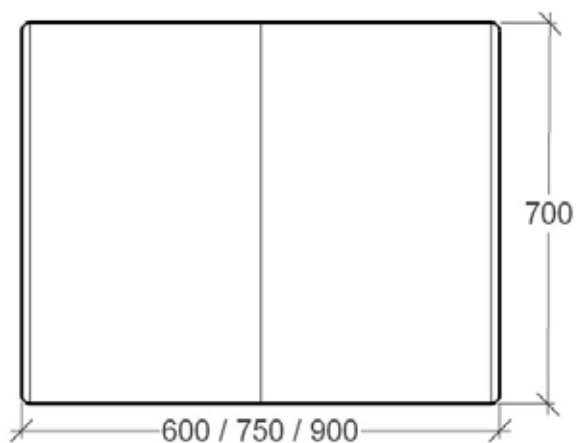
TASMAN MIRROR CABINET

STANDARD SIZES

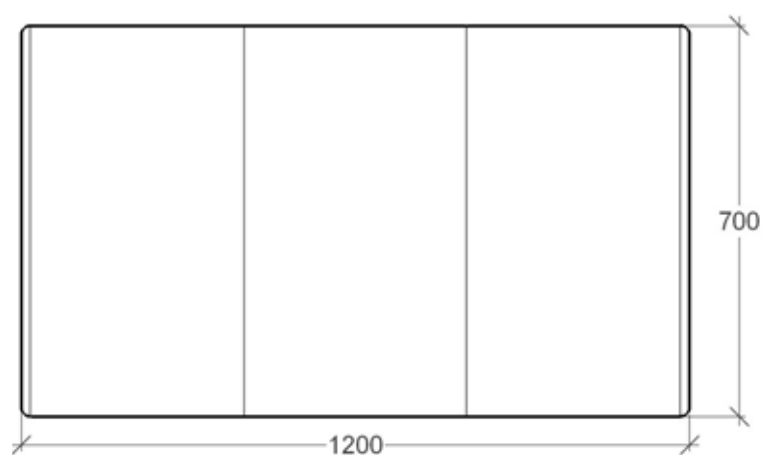
Single Door



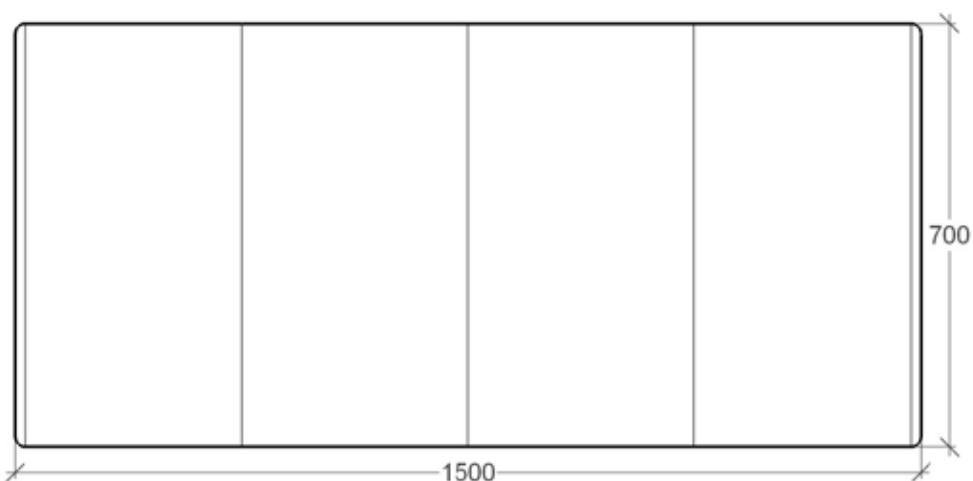
Double Door



Three Door



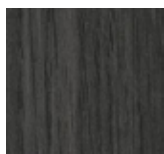
Four Door



TASMAN MIRROR CABINET

COLOUR OPTIONS

POLYTEC CABINET – MATTE/SHEEN OPTIONS



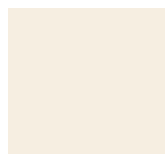
Shannon Oak



Rocco Lini



Gesso Lini



Café Cream



Black Wenge (Matte only)

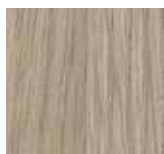
POLYTEC CABINET – RAVINE/LEGATO OPTIONS



Bleached Walnut



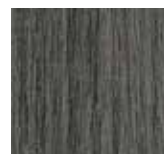
Drifted Oak



Maison Oak



Maroso Milan



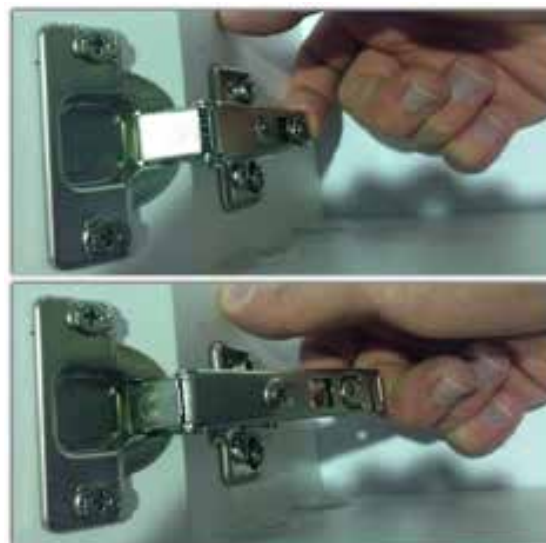
Char Oak (Ravine only)

Plumbers, please ensure a copy of the installation instructions is left with the end user for future reference.

TASMAN MIRROR CABINET

INSTALLATION INSTRUCTIONS

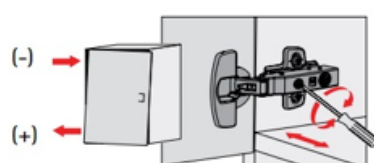
- Step 1.** Ensure that you have read the product warranty on the cabinet you have purchased. Then carefully read the Installation Instructions before attempting any installation.
- Step 2.** Lay cabinet on its back on a soft surface (eg a bed, or carpeted floor) so that the mirrors are facing the ceiling.
- Step 3.** Carefully remove doors by unclipping them from the cabinet as per diagram on the right. (No screwdriver is required here!)
- Ensure that they will be safe and secure during the next steps of installation.



- Step 4.** Secure the cabinet to the wall by using the appropriate screws through the fixing rail (you will need to consider what you are screwing to: (For gyprock wall – fix cabinet to studs- if possible. If not possible to locate studs, use wall anchor plugs; for masonry walls – appropriate plugs will need to be used. Use a spirit level to not only ensure that the cabinet is straight, but that your bathroom wall is level – otherwise your cabinet need to be 'packed-out' with an appropriate material. Ensure that all perimeter edges of the cabinet are sealed against the wall using a bathroom grade silicone.
- Step 5.** Carefully attach the doors back onto the cabinet. Remove the protective packaging and re-adjust the cabinet doors (if required) with a screwdriver (see diagram below). Finally, ensure that all screws are tight and not loose.

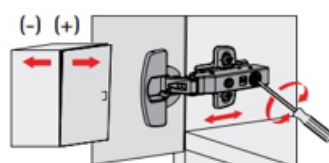
Hinge adjustment

Overlay adjustment



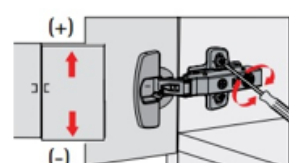
Turn screw clockwise:
Door overlay is reduced (-).
Turn screw anti-clockwise:
Door overlay increases (+).

Depth adjustment

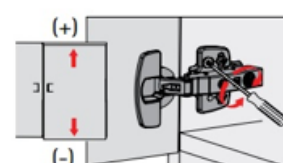


Direct, infinitely variable
depth adjustment

Height adjustment



Height-adjustable mounting
plates permit exact align-
ment of door height.



Direct, infinitely variable height
adjustment by eccentric screw.

How to care for your Rifco Bathroom Cabinet/Mirror

Ensure that your bathroom is well ventilated. Avoid excessive cleaning. Do not use any ammonia based cleaning products on this cabinet. Use of such products will cause edge creep on your mirror. Remove immediately any chemicals or products (eg toothpaste, or shaving cream, etc.) that comes into contact with your Rifco mirror. For cleaning of mirror, use either an approved mirror cleaner or a solution of warm water and methylated spirits. Apply the cleaning solution to a clean soft cloth and wipe the mirror, ensuring all joints and edges are thoroughly dry.

Plumbers, please ensure a copy of the installation instructions is left with the end user for future reference.