

## BATH & SPA BATH BASE FRAME SUPPORT

Decina's passion for innovation has led to the development of an exclusive bath & spa bath base support installation system of which most Decina baths & spa baths come with or can be ordered with.

- ✓ Adjustable self-levelling feet
- ✓ Protect against the bath warranty
- ✓ Simplify the installation process by eliminating the need for further steel framing, a wet bed slurry or a mortar bed\*



The Base Frame is an optional structural, bath support frame suitable for nearly all Decina bath & spa bath models that measure over 1400mm in length & comes as standard on ALL Dolce Vita spa baths. This galvanized steel frame is factory fitted & fiberglass bonded to the base of the bath, making it ready for immediate on-site installation. We recommend all baths & spa baths ordered with an overflow should be fitted with a BASE FRAME for elevation.



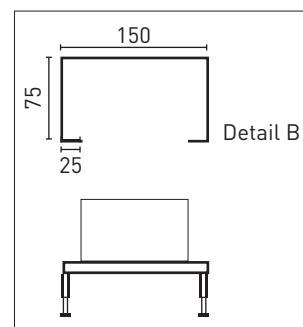
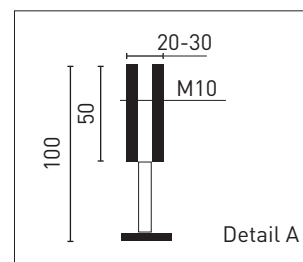
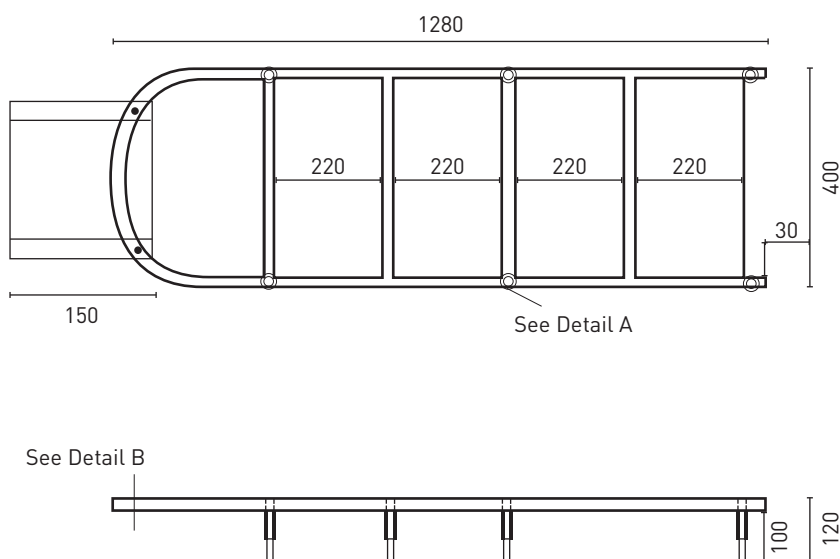
### SHAPE (Suitable for)

RECTANGLE (centre or end waste bath from 1395mm )  
CORNER

### CODE

TAP002  
TAP004

- Adjustable self-levelling feet add 90-120mm



\*If being used as a shower bath installation an additional mortar base support is required between the frame & the floor.