

Dura Stainless Steel Pipe Spool

Dura Stainless Steel Pipe Spool for easy connection of components.

Dura now offer another innovative pipe line solution. The Dura Stainless Steel Pipe Spool enables an easy connect from Flange to Roll Groove or a combination of both in one integral unit. Designed for the HVAC and water piping systems, the Dura Stainless Steel Pipe Spool negates the costly onsite fabrication.

Manufactured to suit your length & flange requirements

Prefabricated with Roll Grooved to floating flange connection:

- Reduces the need for costly site assembly
- Compact installation for limited spaces
- Easy pipe connection alignment

High strength stainless steel one-piece pipe (316 grade)

- No welds
- Corrosion resistant
- Light weight

Available in WaterMark pipe

- All sizes are also in WaterMark approved seam pipe

reece™

hvac

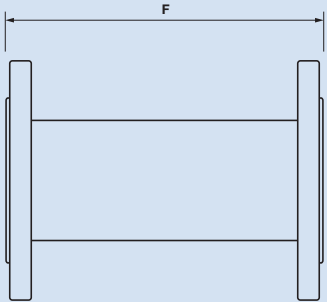
Dura RG Flanged Pipe Spool Specification Data

Technical Details:

Pressure Range	To specified flange rating
Temperature Range	-20°C to 120°C (-4°F to 248°F)
End Connections	AS Table D/E, ANSI 150/300, DIN 10/16, RX Roll Grooved
Size Range	65 - 200mm (2 1/2"-8") larger sizes upon request
Stainless SCH 10	ASTM A312 Stainless SCH 10 TP316/316L
Flanges	Powder Coated Steel with EPDM insulator

Dimensional Details:

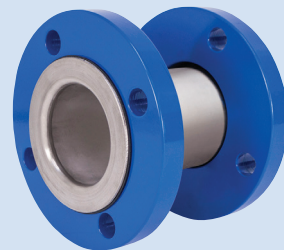
Pipe NB mm (inches)	Minimum 'Face to Face' Spool Length mm (inches)
65mm (2 1/2")	150mm (6")
80mm (3")	150mm (6")
100mm (4")	175mm (7")
125mm (5")	175mm (7")
150mm (6")	175mm (7")
200mm (8")	175mm (7")
65mm-200mm (2 1/2"-8")	Custom lengths (up to 5700mm) available on request



Threaded Sockets

Integral threaded sockets can be supplied for pressure gauges, thermowelds and drains.

Also available, Dura Stainless Steel Meter Spacer
Incorporates Watermarked Stainless Steel pipe, for water authority applications.



Reece. Works for you.™

Call 1800 032 566 or visit www.reece.com.au for your nearest Reece plumbing counter.

