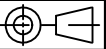
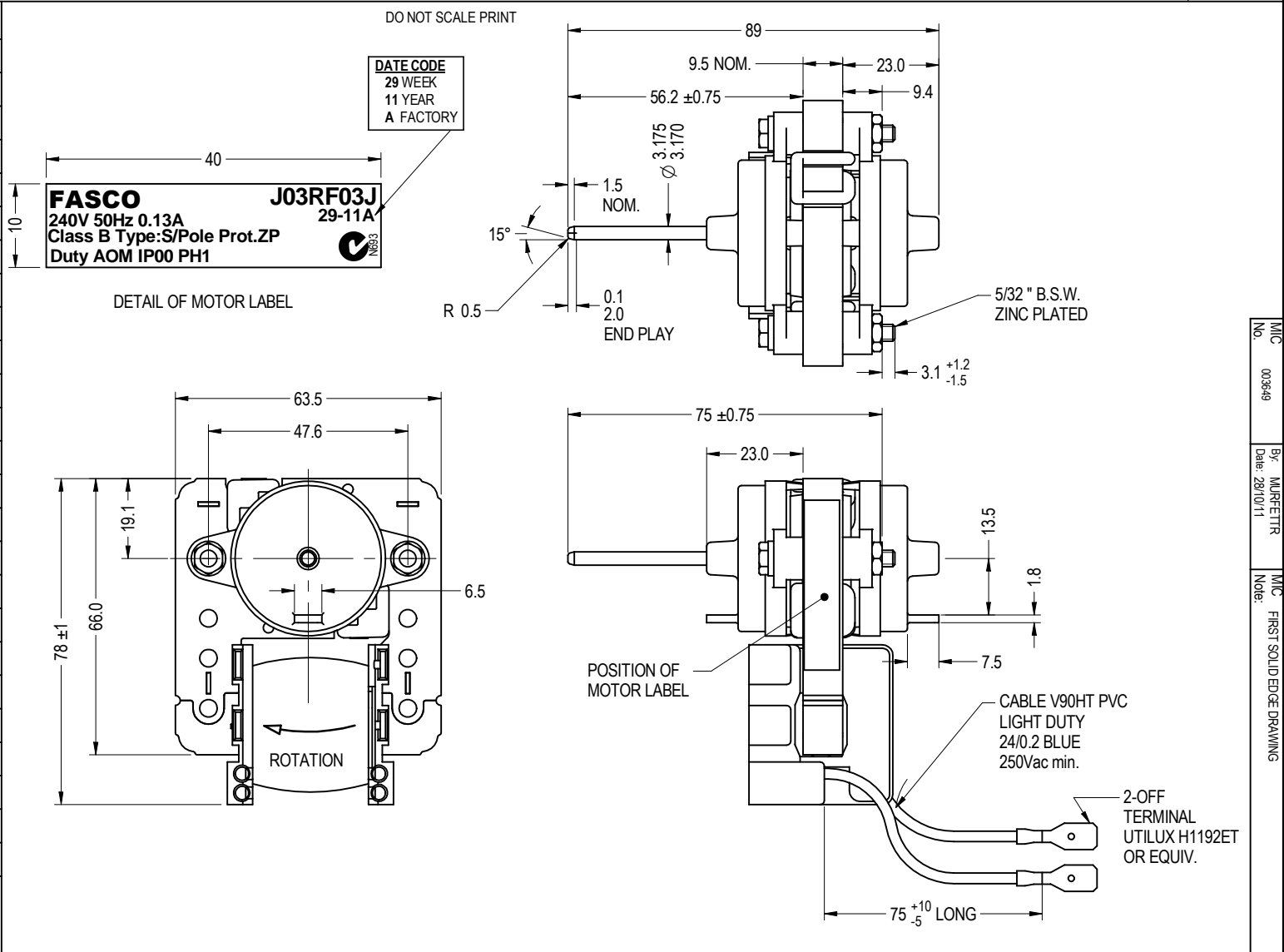


NOTE : FASCO AUSTRALIA IS HAPPY TO PROVIDE TECHNICAL ASSISTANCE TO OUR CUSTOMERS IN MANY AREAS. HOWEVER, SINCE FASCO AUSTRALIA IS NOT AWARE OF ALL DATA CONCERNING THE USE AND APPLICATION OF THIS MOTOR, THE SUITABILITY OF THE MOTOR FOR THE APPLICATION MUST BE DETERMINED BY AND IS THE RESPONSIBILITY OF THE CUSTOMER.



MOTOR SPECIFICATION				
CUSTOMER	VARIOUS			
CUSTOMER P/N	-----			
QR No.	-----	CAPACITOR	uf / V	
POWER OUTPUT	1.5W	START	-----	
MOTOR TYPE	S/POLE	RUN	-----	
SUPPLY	VOLTS	HERTZ	PHASE	POLES
	240	50	1	2
ENCLOSURE	STANDARD BOBBIN			
SPEED (RPM) AT RATED OUTPUT	1500±100	WINDING TYPE	SINGLE SP.	
ROTATION	CLOCKWISE			
INSULATION CLASS	B	DUTY	AOM	
THERMAL PROTECTION	ZP			
RATED CURRENT	0.13	AMPS AT RATED OUTPUT		
APPLICATION	REFRIGERATION MOTOR			
MOUNTING	SCREWS / END BRACKETS			
BEARING & LUBRICATION	SINTERED - SYNFLUID GULF OIL			
SUPPLY LEAD	COLOUR	BLUE		
	LENGTH	AS SHOWN		
	TERMINALS	AS SHOWN		
	Q.C. HOUSING	-----		
EARTH PROVISION	-----			
BASIC BUILD SPECIFICATION	-----			
PERFORMANCE SPECIFICATION	SPM53018-01			
SHAFT MATERIAL	S.S.310 / AISI 201			
CONNECTION DIAGRAM	-----	PAINT SPEC	CLEAR VARNISH	
SPECIAL REQUIREMENTS				
PACKAGING 30 - MOTORS PER BOX ADDITIONAL PROTECTION :- CORROSION INHIBITING PAPER IN EACH BOX PALLET AND BOX LABELS TO HAVE:- FASCO NUMBER DATE OF MANUFACTURE QUANTITY WEIGHT				



DIMENSIONS IN mm UNLESS OTHERWISE SPECIFIED GENERAL TOLERANCES LINEAR: X = ±1.0 XX = ±0.25 XXX = ±0.1 ANGULAR: X = 2° XX = ±0.5° SURFACE FINISHES MAX 3.0 MICRO METRES SYMBOLS PER A.S. 1100 This drawing remains the property of Fasco Australia Pty. Ltd. No part or parts of this drawing may be reproduced without written permission.	MAT'L			 ABN 76 000 010 944 1/14 Monterey Road Dandenong Victoria	FRAME	.MOTOR		
	FINISH				STATUS	240V 50HZ 1SP CW		
	DRAWN	MURFETTR	18/07/11		R SHEET	DWG. NO.	J03RF03J	
	CHECKED	BALCHANT	09/11/11					
	RELEASED	BALCHANT	09/11/11					
SCALE	1:1				REVISION	A		

MIC No. 003649
 By: MURFETTR
 Date: 28/10/11
 MIC No. FIRST SOLID EDGE DRAWING