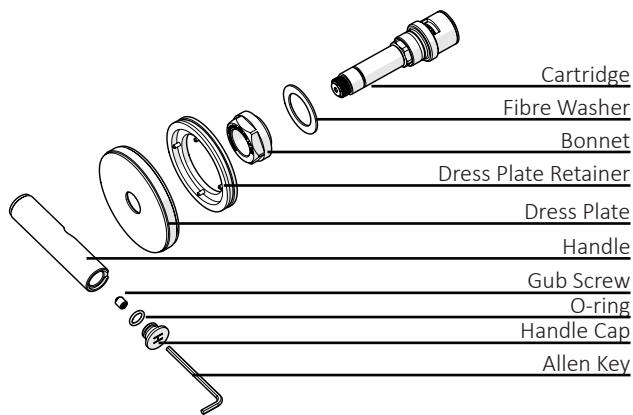




## Wall Top

### Installation Instructions



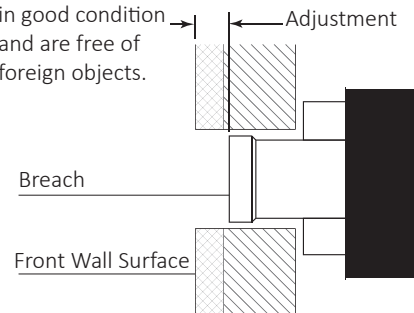
#### Adjustment

Standard = 5mm-17mm

Extended = 17mm-32mm

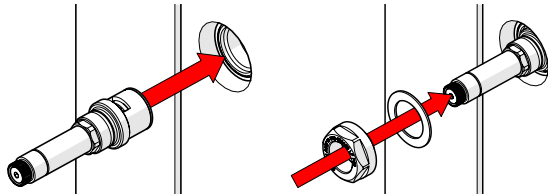
#### BREACH SET-UP

Ensure that seats in the Breach are in good condition and are free of foreign objects.

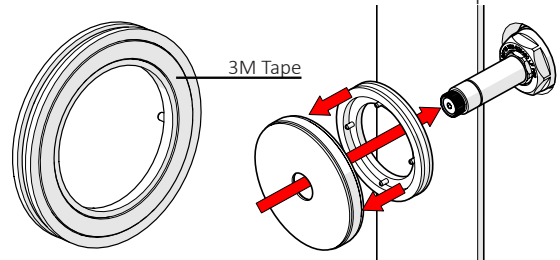


- 1** Screw Cartridge Body into recess until Cartridge Seat meets a physical stop.
- Fit Fibre Washer around the Spindle and then firmly fasten the Bonnet onto the Spindle using a spanner.

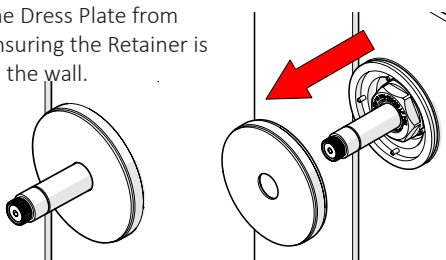
Do not over tighten.



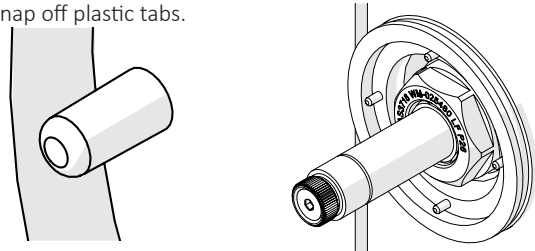
- 2** Remove protective film from 3M tape on back of Dress Plate Retainer. Push Retainer into Dress Plate and install up to wall.



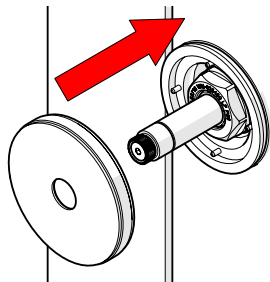
- 3** Remove the Dress Plate from the wall ensuring the Retainer is secured to the wall.



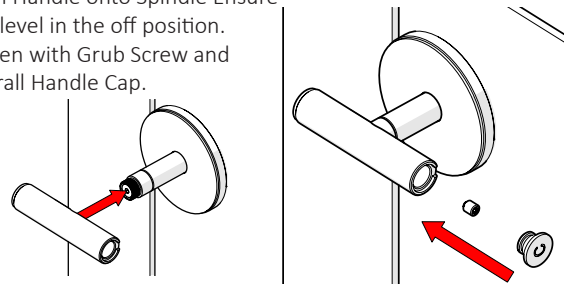
- 4** Snap off plastic tabs.



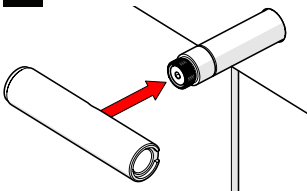
- 5** Push on Dress Plate ensuring it is flush with tile face.



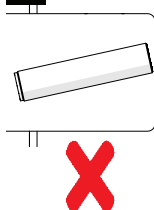
- 6** Push Handle onto Spindle Ensure it is level in the off position. Fasten with Grub Screw and install Handle Cap.



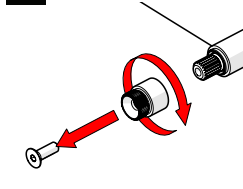
#### a FINE HANDLE ADJUSTMENT



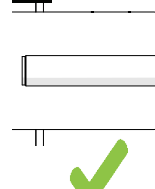
#### b



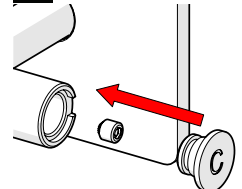
#### c



#### d



#### e



### Care Details

We recommend the use of soapy water or approved cleaners. This product should not be cleaned with abrasive materials. Damage caused by any improper treatment is not covered by the product warranty. Refer to Warranty Conditions

Installation should comply with Australian standard AS3500.1 or relevant local authority requirements. Showers may not be suitable for use within:

- Gravity-fed water systems
- Some instantaneous hot water systems

Any flow controller incorporated in the outlet to be tightened to prevent removal by hand. As Per AS3718

**Plumbers, please ensure a copy of the installation instruction is left with the end user for future reference.**

