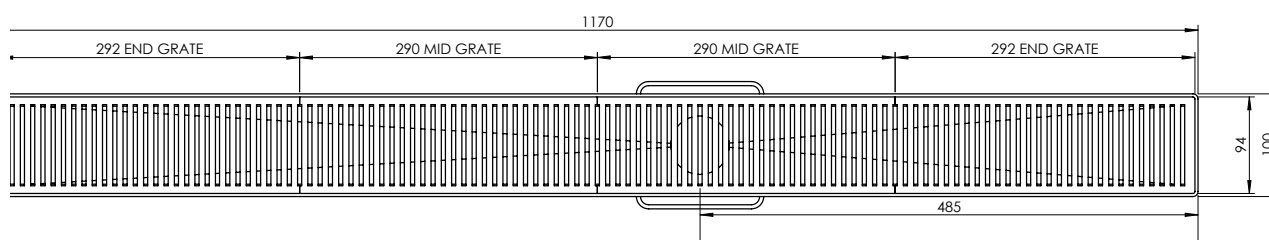
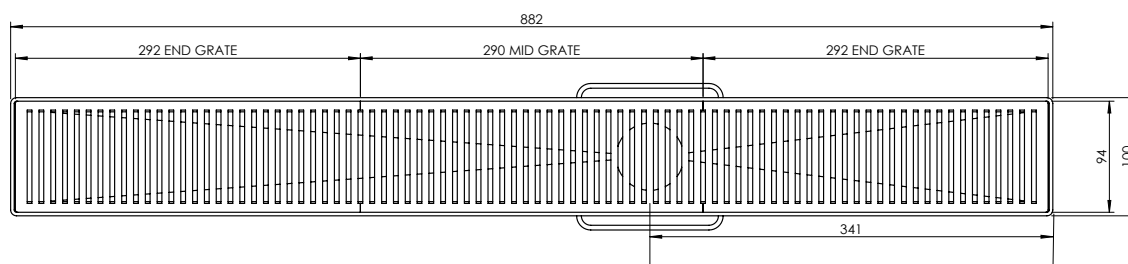
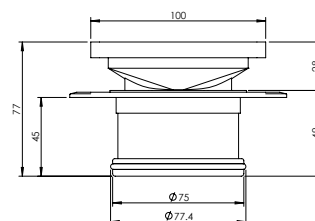
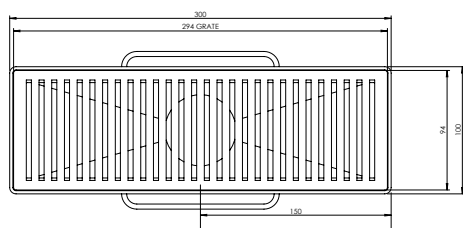


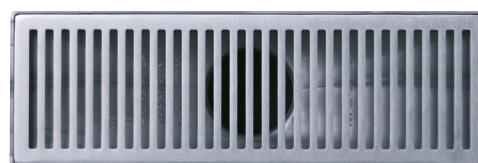
mizu

SHOWER CHANNELS



SPECIFICATIONS

Recommended use	Domestic, hotel and commercial
Colour Availability	Brushed Satin Chrome
Material	ABS Body / Solid Brass Grate
Length Options	300mm 900mm 1200mm
Height	Maximum Height 30mm minus tile thickness
Waste	DN80
Features	Non slip surface with no sharp edges. Electroplated Brass Grates - will not rust or Stain.



To see the complete MIZU range go to
www.reece.com.au/bathrooms

CLEANING RECOMMENDATIONS

We recommend the use of soapy water or approved cleaners.

This product should not be cleaned with abrasive materials.

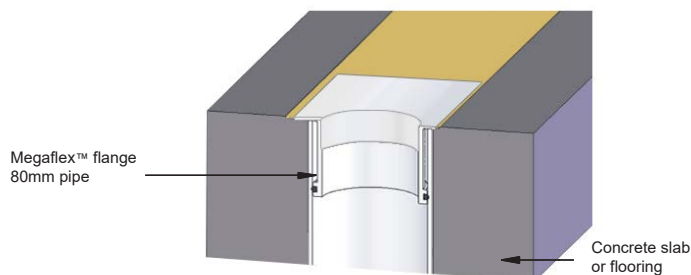
Damage caused by any improper treatment is not covered by the product warranty - Refer to Warranty Conditions.

mizu

SHOWER CHANNELS

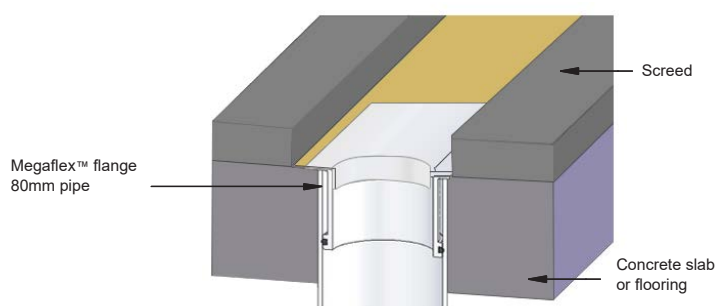
Step 1

Use the Channel body as a guide for Plumbing layout.
Insert Mega flex flange into Pipe.
With the flange sitting flush with the floor and sealing into the pipe with the O ring.



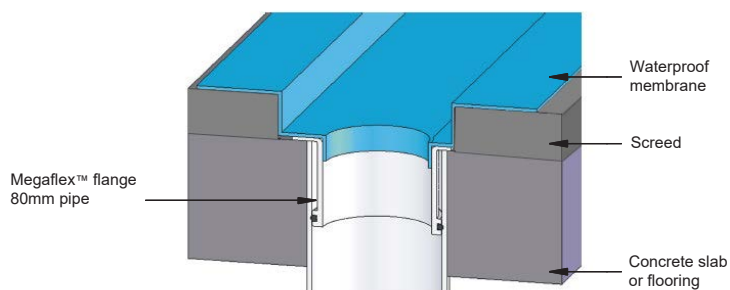
Step 2

Screed the floor creating the required fall to the drain and using the Channel body as a guide for required heights and tile thickness.



Step 3

Waterproof as per your desired method (note this product is to be installed after waterproofing).



Step 4

Install channel and adjust heights to suit tiling.
(it is recommended to have the Grates in the channel so it does not warp during the tiling and installation process.
Either turn them up side down or wrap in newspaper and insert in the channel during this process). Channel has in built fall to the waste so should be installed level.

Channel is designed to be supported underneath so back filling under the channel is required to prevent movement.

