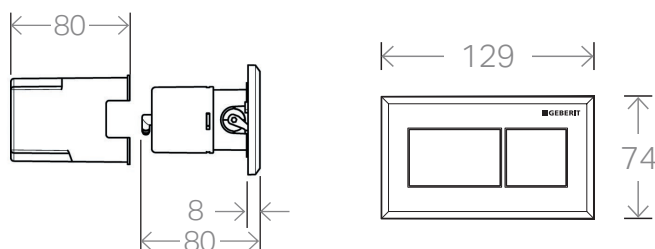


■ GEBERIT

SIGMA PNEUMATIC – PNEUMATIC BUTTON



Button can not be placed in front of the cistern.
Service access is required for the cistern.

FEATURES & BENEFITS

15 year warranty	Peace of mind
Easy, reliable operation	water saving
25 year spare parts availability guarantee	Serviceable for the life of your bathroom
Vandal resistant	Perfect for commercial buildings
Remote cistern In-ceiling or In-duct	Suit difficult bathroom layouts
Sophisticated square design, small size	Fits any bathroom style
Easy to clean	Finger prints can be removed easily

SPECIFICATIONS

Operation	Pneumatic, Remote
Application	Dual-flush
Colour range	Brushed chrome Bright chrome
Product material	Zinc die cast
Compatibility	Suits Sigma 120, Under Counter 150 and Sigma 75 Pneumatic cisterns

To suit BTW toilet pan only. Wall hung option available from mid 2013.

For remote installation only. Separate access is required to service the cistern.

COLOUR OPTIONS



Sigma Pneumatic Brushed chrome 9504020
Sigma Pneumatic Bright chrome 9504021



Product code: see below with colour options



CLEANING INSTRUCTIONS

You have selected a Geberit product with a high-grade surface. Please follow the cleaning instructions so that your Geberit product will give you many years of pleasure.

Never use aggressive cleaners that contain chlorine, are acidic, abrasive or corrosive. Only use water and a mild cleaning agent.

1. Clean the unit with a soft cloth soaked in water.
2. Dry with a soft cloth.

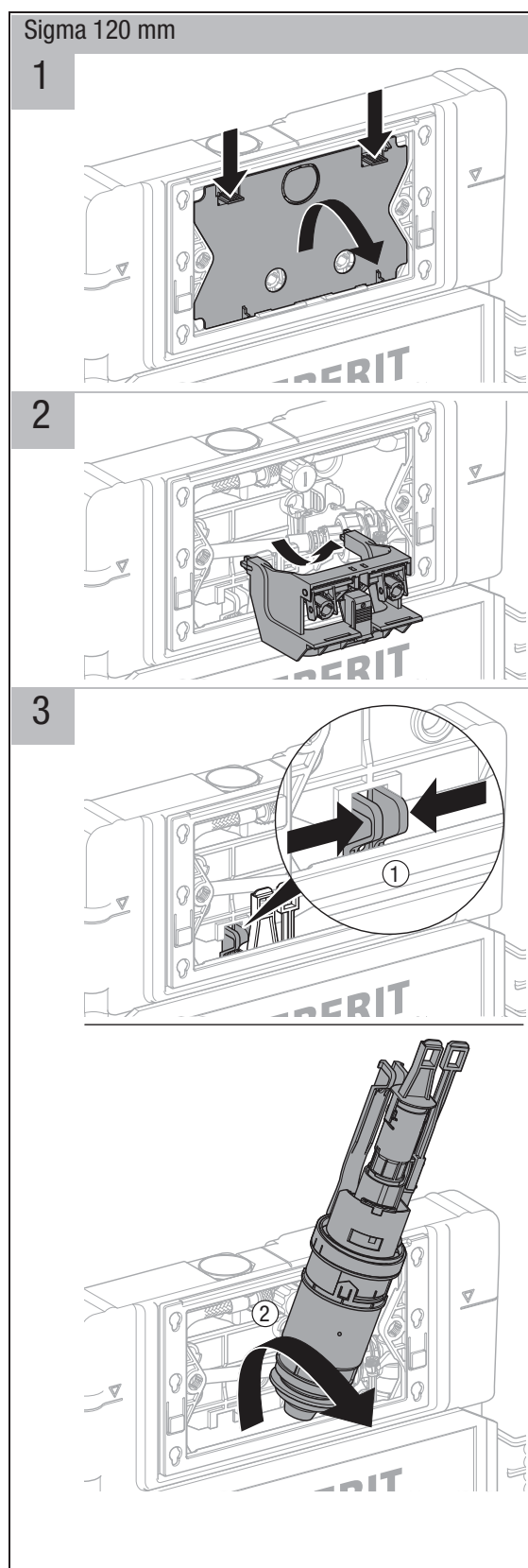
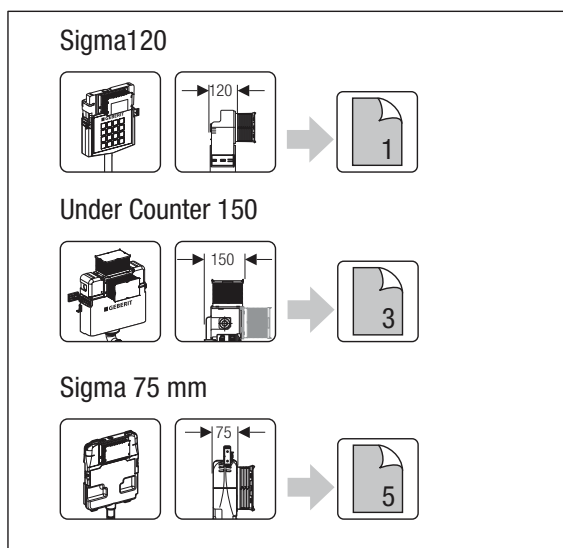
The unit warranty does not cover damage arising from improper treatment with cleaning agents.

Disclaimer: Products in this specification manual must by regulation be installed by licensed and registered trade people. The manufacturer/distributor reserves the right to vary specifications or delete models from their range without prior notification. Dimensions and set-outs listed are correct at time of publication however the manufacturer/distributor takes no responsibility for printing errors.

Tech Page Version 1 – January 2013

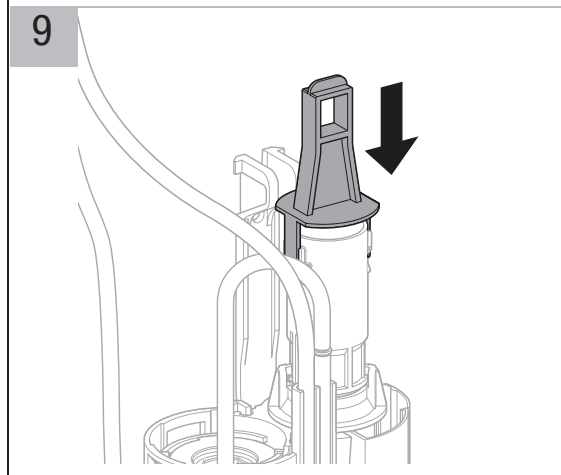
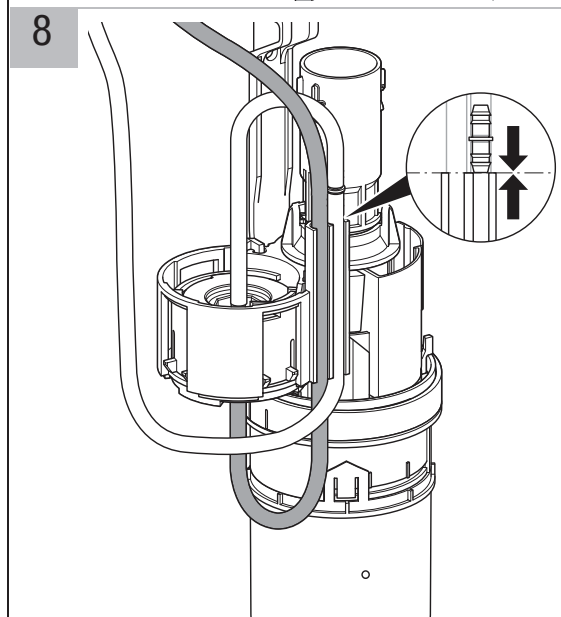
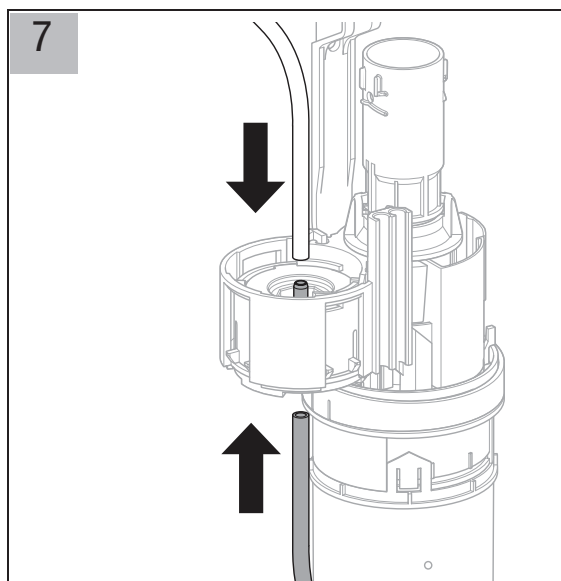
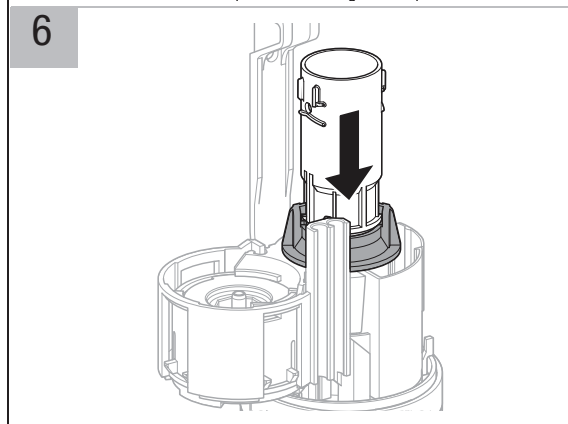
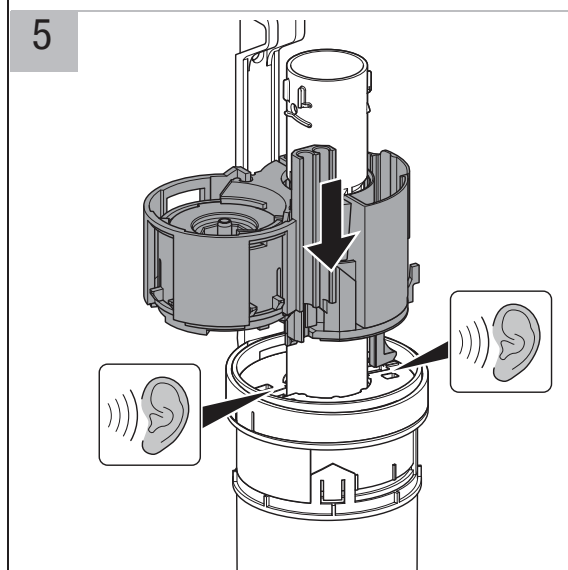
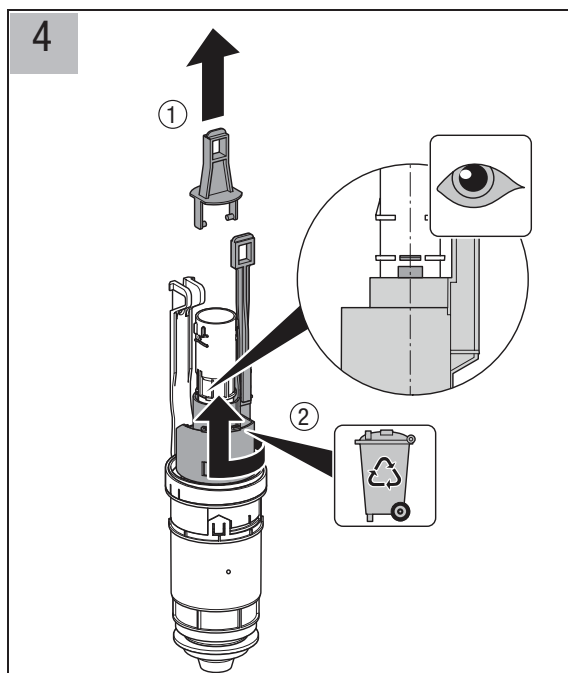
■ GEBERIT **SIGMA PNEUMATIC** **– PNEUMATIC BUTTON**

INSTALLATION INSTRUCTIONS



■ GEBERIT **SIGMA PNEUMATIC** **– PNEUMATIC BUTTON**

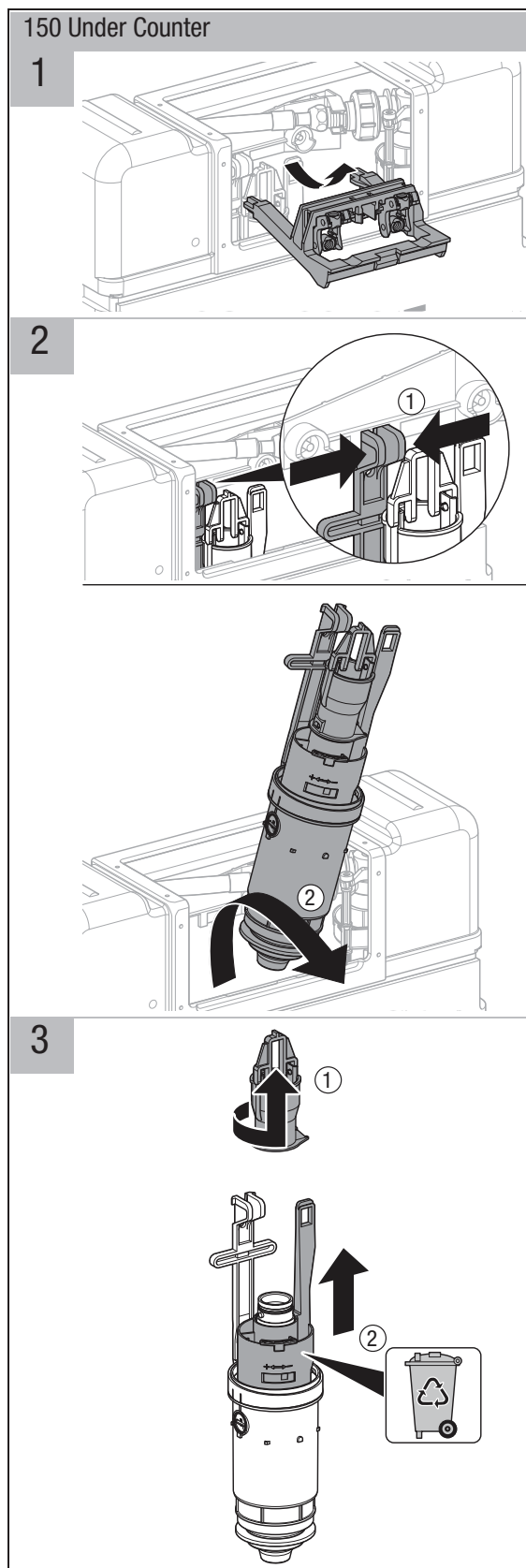
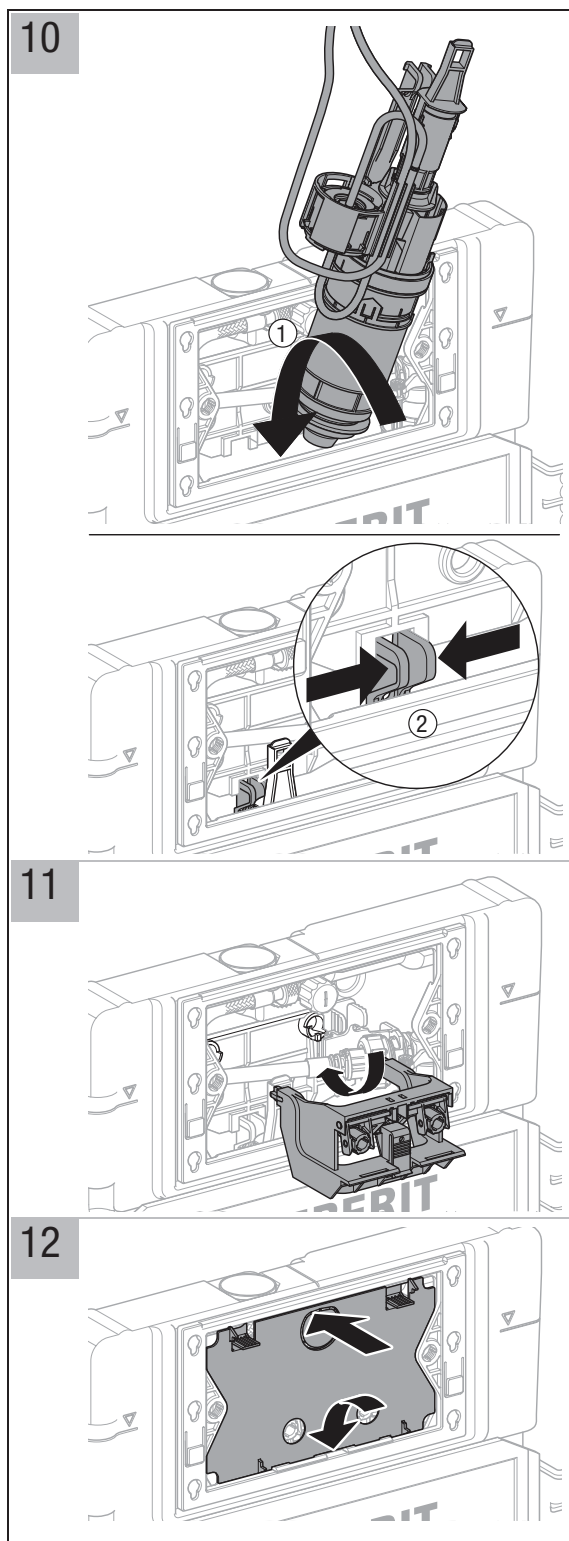
INSTALLATION INSTRUCTIONS



Plumbers, please ensure a copy of the installation instructions is left with the end user for future reference

■ GEBERIT **SIGMA PNEUMATIC** **– PNEUMATIC BUTTON**

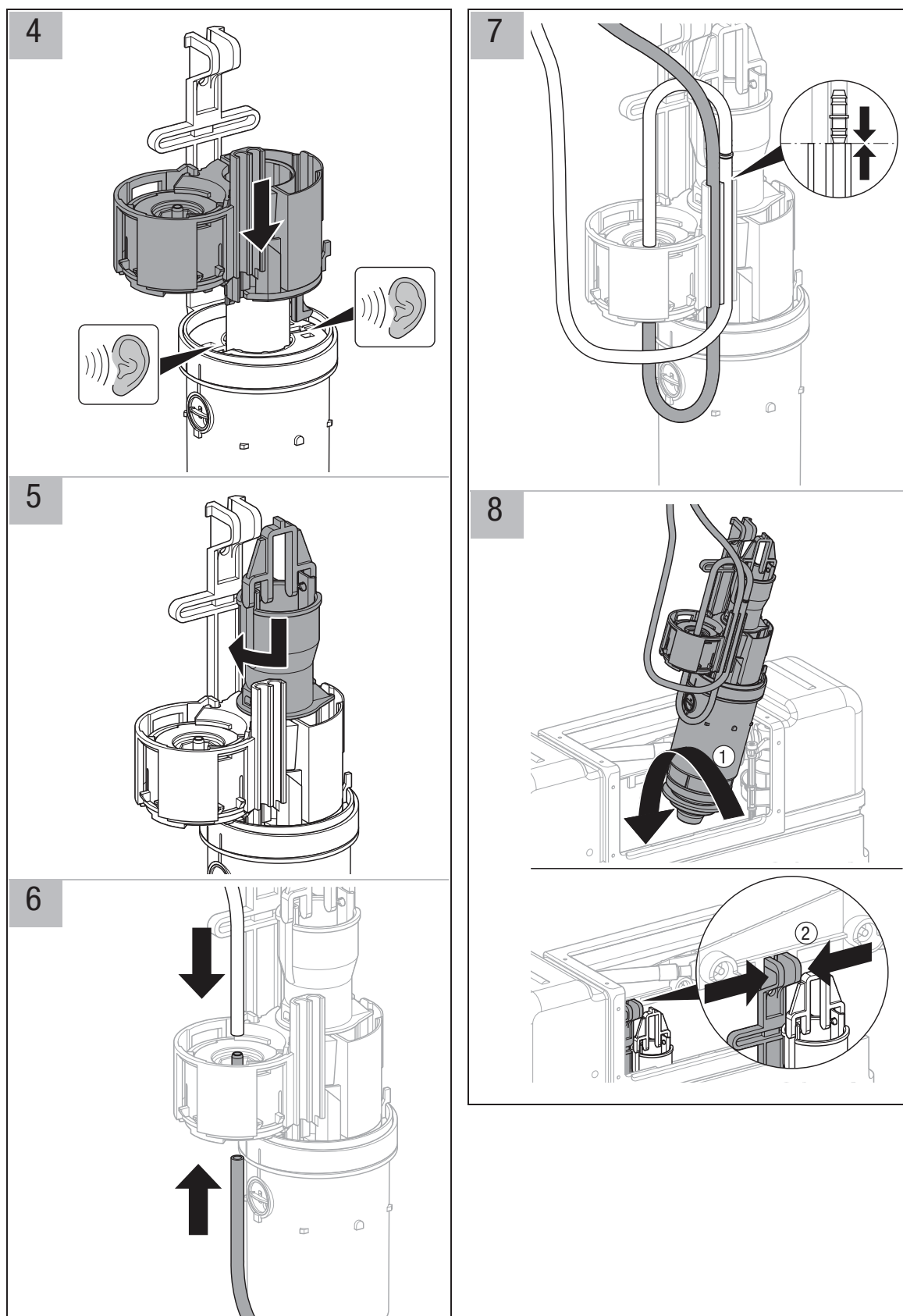
INSTALLATION INSTRUCTIONS



Plumbers, please ensure a copy of the installation instructions is left with the end user for future reference

■ GEBERIT **SIGMA PNEUMATIC** **– PNEUMATIC BUTTON**

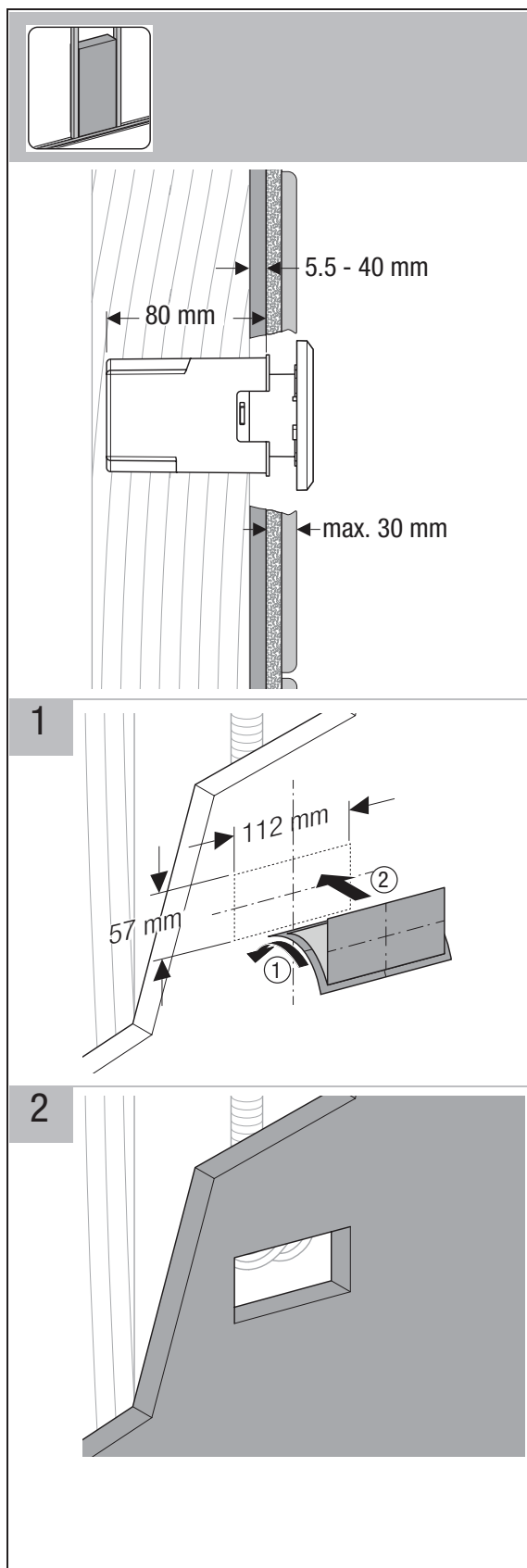
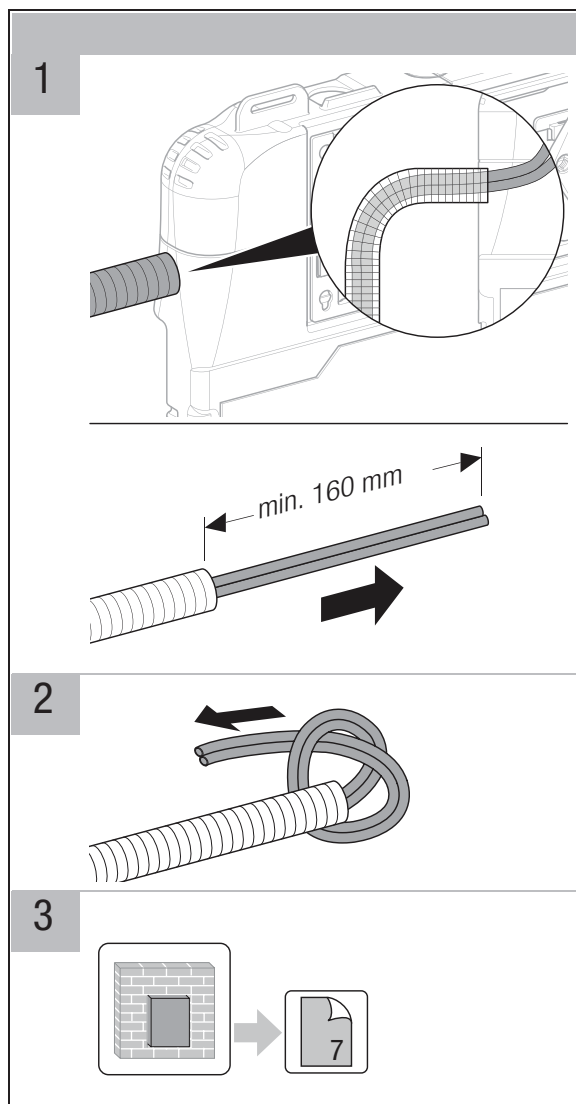
INSTALLATION INSTRUCTIONS



Plumbers, please ensure a copy of the installation instructions is left with the end user for future reference

■ GEBERIT **SIGMA PNEUMATIC** **– PNEUMATIC BUTTON**

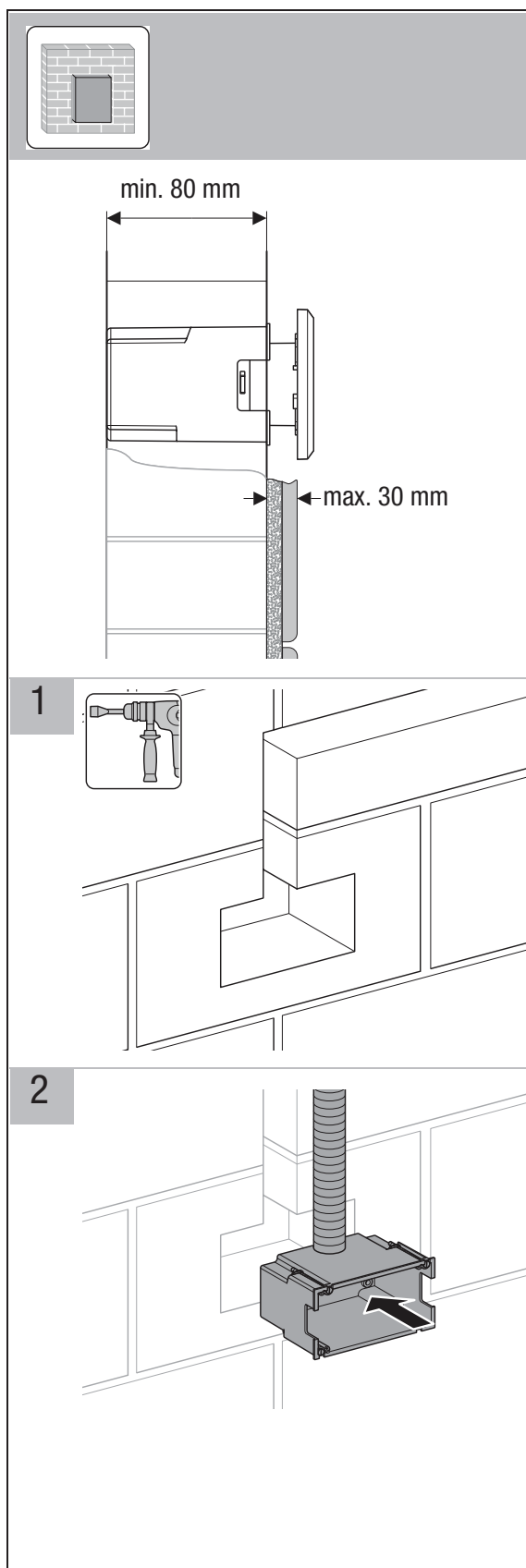
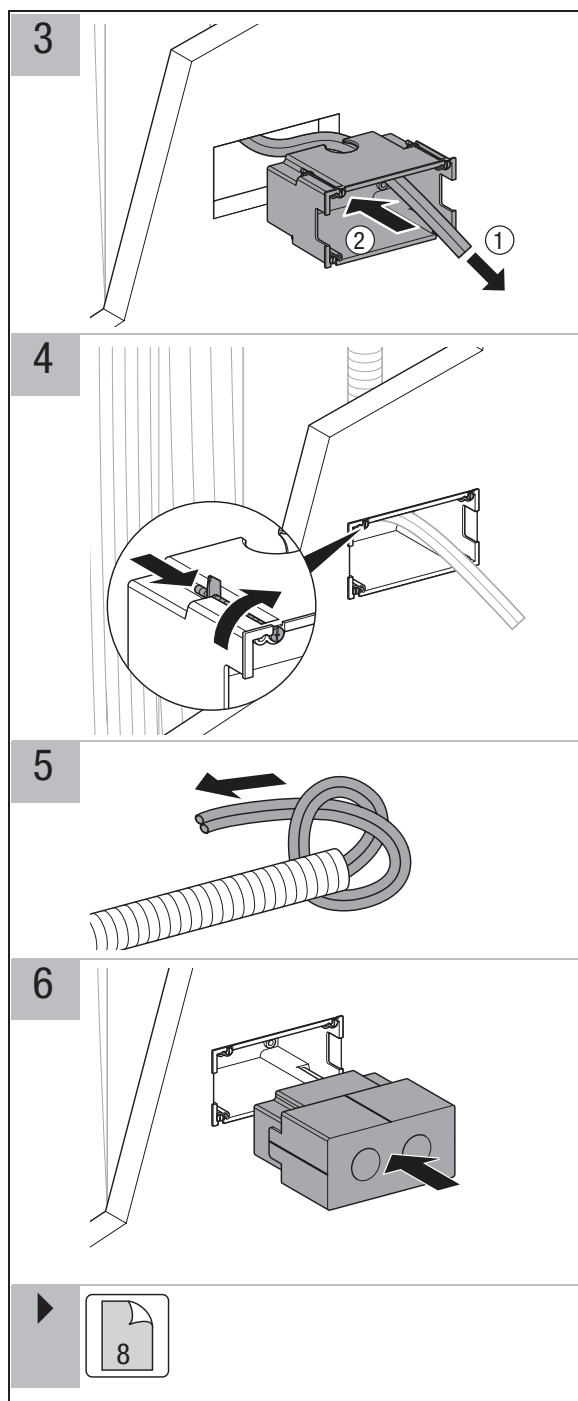
INSTALLATION INSTRUCTIONS



Plumbers, please ensure a copy of the installation instructions is left with the end user for future reference

■ GEBERIT **SIGMA PNEUMATIC** **– PNEUMATIC BUTTON**

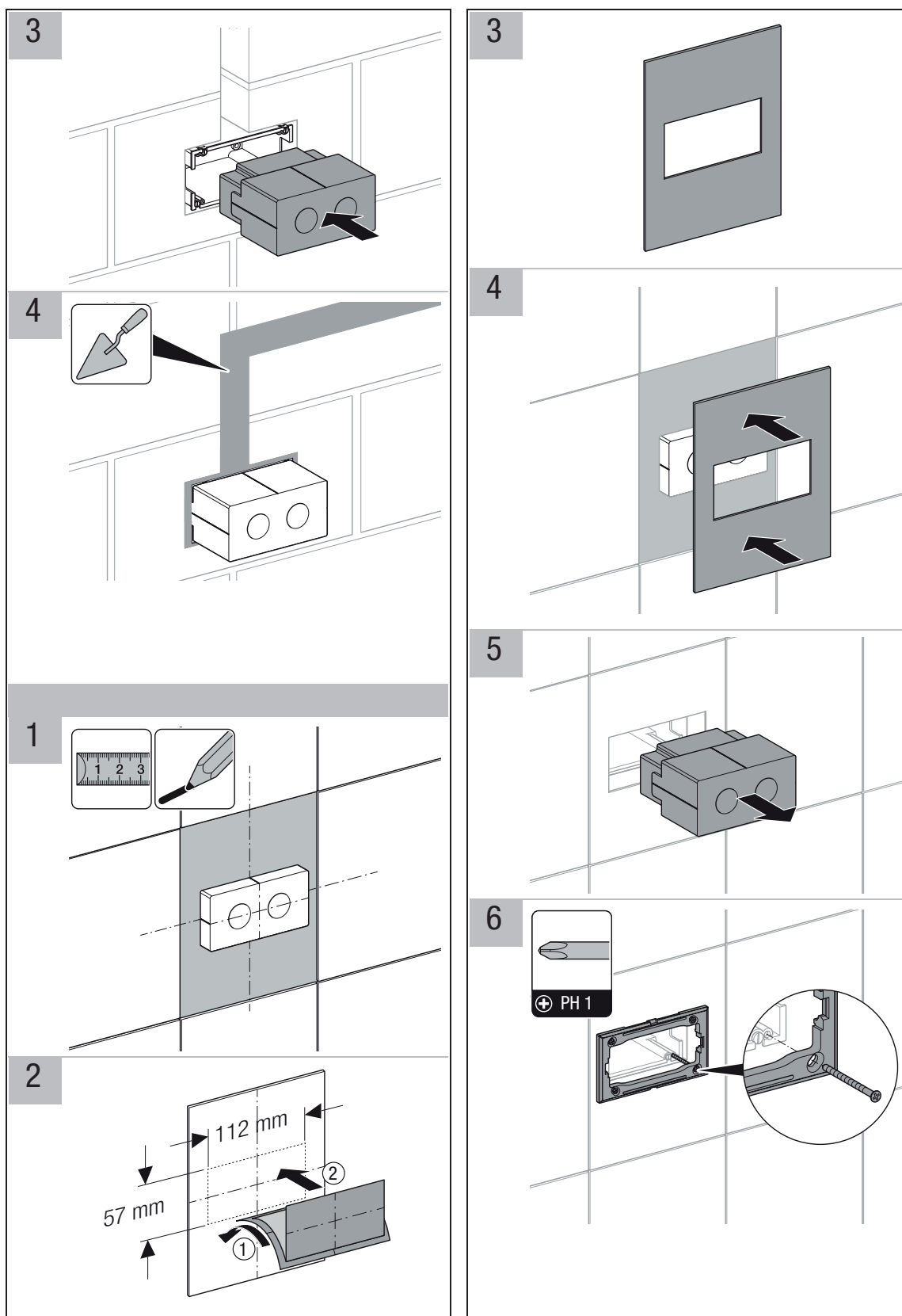
INSTALLATION INSTRUCTIONS



Plumbers, please ensure a copy of the installation instructions is left with the end user for future reference

■ GEBERIT **SIGMA PNEUMATIC** **– PNEUMATIC BUTTON**

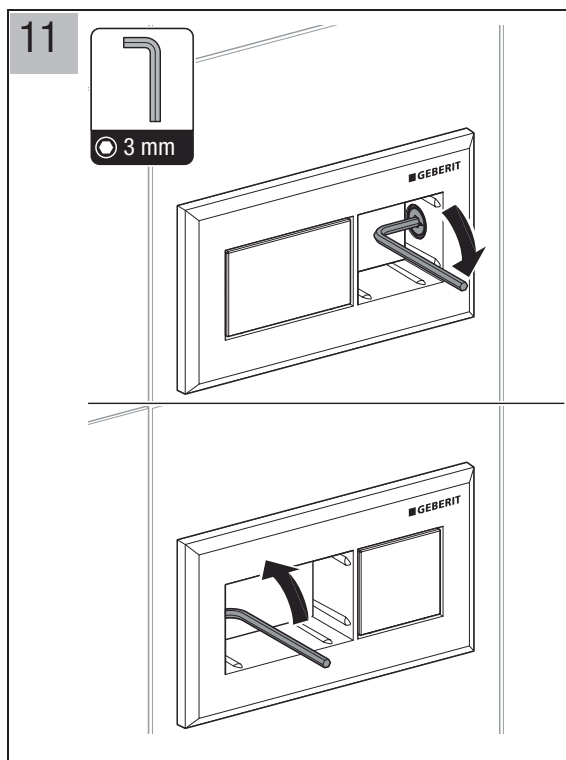
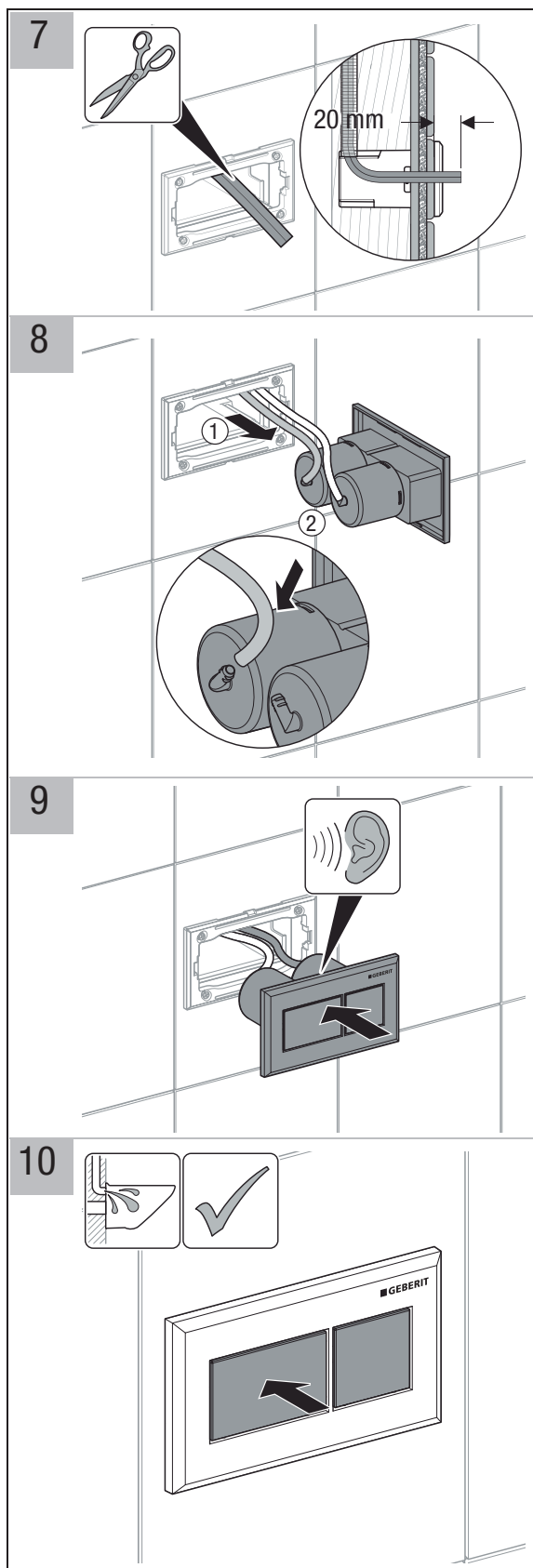
INSTALLATION INSTRUCTIONS



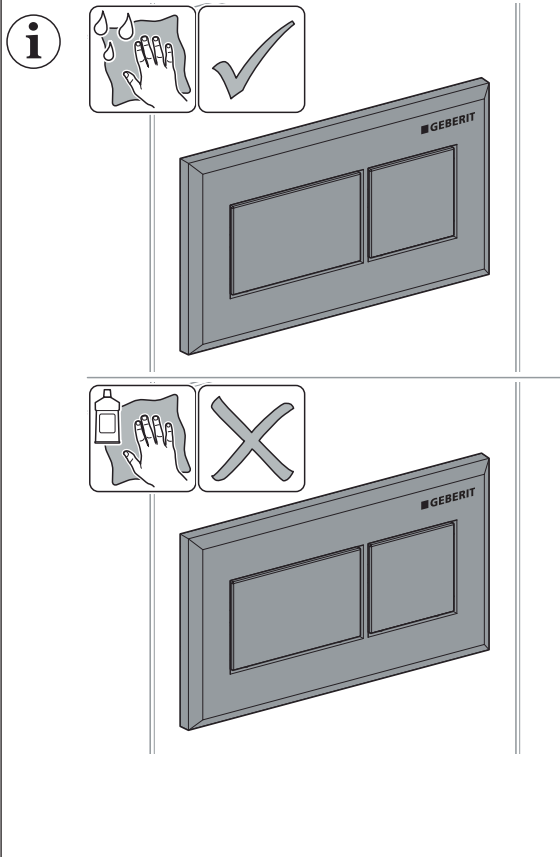
Plumbers, please ensure a copy of the installation instructions is left with the end user for future reference

■ GEBERIT **SIGMA PNEUMATIC** **– PNEUMATIC BUTTON**

INSTALLATION INSTRUCTIONS



Maintenance



■ GEBERIT

SIGMA PNEUMATIC – PNEUMATIC BUTTON

REECE PRODUCT QUALITY GUARANTEE

You have purchased a quality product from Reece Pty Ltd ABN 84 004 097 090 ("Reece"). This product is covered by a 15 year product warranty on the tank and push plate and a 3 year warranty on internal components including valves, electronic and pneumatic parts.

15 YEAR WARRANTY – DOMESTIC USE

This warranty covers faults in the product construction, material and assembly. Products which are within 15 years from the date of purchase, found upon inspection by an authorised Reece representative, to be defective in construction, material or assembly, will be repaired or exchanged with an equivalent product free of charge. Replaced items become Reece's property.

All replacement products will be available for collection without charge to the customer at the nearest Reece branch to the customer's location, or elsewhere as agreed between the customer and Reece.

LABOUR

The labour for the replacement of products to which this warranty applies will be supplied by Reece or relevant supplier using licensed plumbers engaged by Reece or relevant supplier within 1 year from the date of purchase.

Spare parts which are within 1 year from the date of purchase found upon inspection by an authorised Reece representative to be defective in construction, material or assembly, will be replaced free of charge.

WARRANTY CONDITIONS

This warranty will apply only under all of the following conditions:

- The item has been installed by a licensed plumber
- The item has been installed for and subjected to domestic residential use only
- Failure is due to a fault in the manufacture of the product
- Proof of purchase (including the date of purchase) is provided
- The installation of the product is in accordance with the instructions provided

This warranty does not cover products purchased as an ex-display without being fully checked and tested for sale by the manufacturer.

This warranty does not include faults caused by:

- Unsuitable or improper use
- Incorrect installation or installation not in accordance with the instructions provided

- Installation or part installation by the purchaser or any person other than a LICENSED PLUMBER
- Normal wear and tear
- Inadequate or complete lack of maintenance
- Chemical, electrochemical or electrical influences
- Harsh detergents or abrasive cleaners used on product finishes

1 YEAR WARRANTY – COMMERCIAL USE

'Commercial' use is all use other than for normal domestic residential purposes, including use in non-business places as in public buildings, schools, sports centres and in establishments that contain private bathrooms with high frequency of use by many individuals, such as hotels, motels, retirement villages and hospitals.

The Commercial warranty covers this product against manufacturing faults in the construction, material and assembly of both the finished products and any spare parts for a period of 1 year from the date of purchase. Products and spare parts which are found upon inspection by an authorised Reece representative to be defective in construction, material or assembly will be repaired or exchanged free of charge.

Replaced items become Reece's property. The labour for the replacement of products and spare parts to which this warranty applies will be supplied by Reece or relevant supplier using licensed plumbers engaged by Reece or relevant supplier.

The Warranty Conditions and exclusions which apply to the domestic use warranty also apply to this commercial warranty.

EXCLUSIONS

To the fullest extent permitted by law, Reece excludes all liability for damage or injury to any person, damage to any property, and any indirect consequential or other loss or damage.

CLAIM PROCEDURE

For all warranty queries customers are to contact the branch where the product was purchased. These details can be found on your purchase invoice. Our goods come with guarantees that cannot be excluded under the Australian Consumer Law. You are entitled to a replacement or refund for a major failure and for compensation for any other reasonably foreseeable loss or damage. You are also entitled to have the goods repaired or replaced if the goods fail to be of acceptable quality and the failure does not amount to a major failure.

GEBERIT COMPATABILITY GUIDE

COMPATABILITY	MECHANICAL	PNEUMATIC	ELECTRONIC
CISTERN	Sigma75 Sigma120 Under Counter 150	Sigma75 Pneumatic Sigma120 Under Counter 150	Sigma120
BUTTON	