

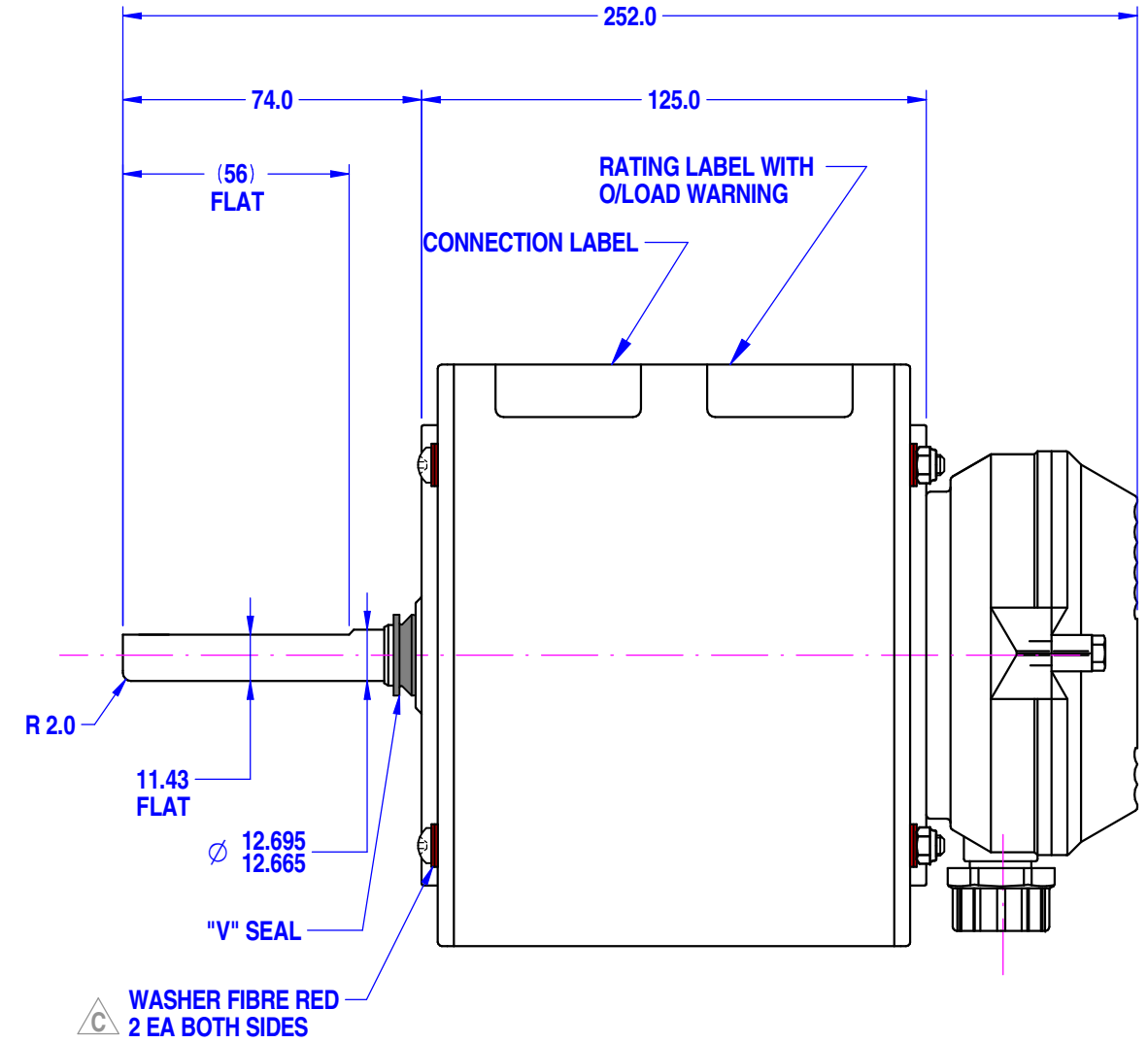
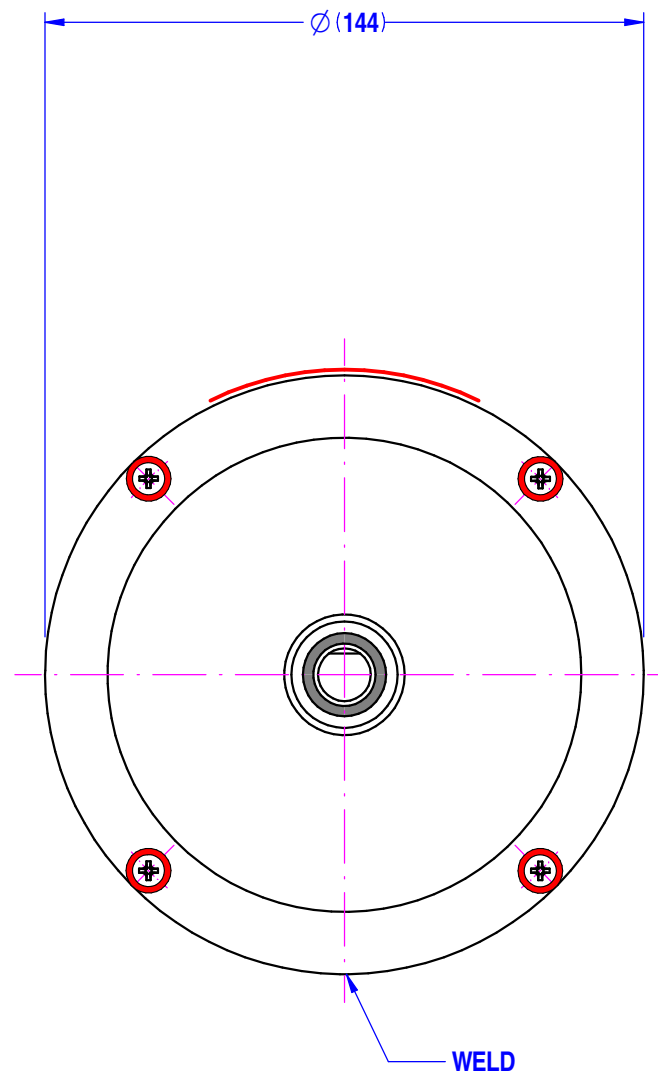
**MOTOR SPECIFICATION**

FINAL INSPECTED MOTORS MUST COMPLY WITH ELECTRIC MOTOR VIBRATION SPECIFICATION (ES049)

THIRD ANGLE PROJECTION

**808536MTB-A11**

Q.R. No.	Y001045	CUSTOMER NO.	-
CUSTOMER	VARIOUS		
MOTOR RATING	VOLTS	415	Hz 50 Ph 3 Duty A.O.M.
	RPM.	900	0.95 AMPS
	NOM. OUTPUT	250 WATTS	
ROTATION	CLOCKWISE DRIVE END (REVERSIBLE)		
CAPACITOR	START	----- μF/V	RUN - μF/V
ENCLOSURE	TOTALLY ENCLOSED		
MOTOR TYPE	3 PH	INSULATION CLASS	B130
THERMAL PROTECTION	NIL		
APPLICATION	FAN - SHAFT HORIZONTAL		
BEARING D.E.	6202 DDU C3 EA2	LUBRICATION	LONG LIFE, WIDE RANGE
BEARING N.D.E.	6202 DDU C3 EA2		
SUPPLY LEAD	-		
EARTH PROVISION	IN TERM. BOX		
BASIC BUILD SPECIFICATION	305-570-05	PAINT/ COLOUR	PC GREY CASE PLAIN E/SH
PERFORMANCE SPECIFICATION	SP85105-01		
CONNECTION DIAGRAM	393-000-AM	RATING LABEL	LABELSTD.FMT



DESIGNED AND MANUFACTURED TO AUSTRALIAN STANDARDS & SPECIFICATIONS

**FASCO** ddmmyxxxx

MODEL **808536MTB-A11**

VOLTS	415	TYPE	3 PHASE	Hz	50
WATTS	250	DUTY	AOM	PH	3
AMPS	0.95	CLASS	B130	PROT.	NIL
R.P.M.	900	μF/V S	NIL	R	NIL
WATTS IN MAX		MAX kPa			

**SPECIAL REQUIREMENTS:**

- WEATHERPROOF MOTORS TO ES050
- CONNECTION LABEL 393-487-01 TO BE PUT ON CASE
- WASHER FIBRE TO BE FITTED ON TIE RODS BOTH SIDES.

UNLESS OTHERWISE SPECIFIED : DIMENSIONS ARE IN MM. TOLERANCES

DECIMALS	ANGULAR
.X ± 1.0	± 30'
.XX ± 0.1	

THIS DRAWING REMAINS THE PROPERTY OF FASCO MOTORS AND MAY NOT BE USED, COPIED OR ISSUED WITHOUT WRITTEN PERMISSION FROM FASCO MOTORS

MOTOR WEIGHT	6.1 kg.	
DRAWN	Nutapong	13/02/2001
CHECKED	Pipat	08/11/2018
RELEASED	Suksakorn	08/11/2018
SCALE	N.T.S.	

**FASCO THAILAND**

29/7-8 MOO 3, BANGKRUAY - SAINOI Rd., BANGKRANG, MUANG NONTABURI DISTRICT, NONTABURI 11000 THAILAND

FRAME	MOTOR	
STATUS	R	
SHEET	DWG. NO.	REVISION
A3	808536MTB-A11	D

MIC1804207 By: Veeranut Date:07/11/2018 MIC D: REMOVE C-TICK FROM LABEL