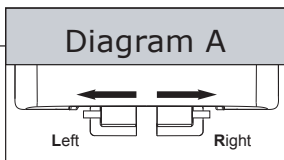
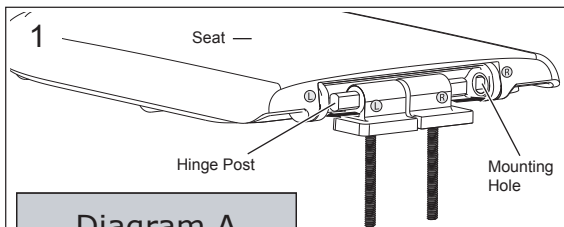
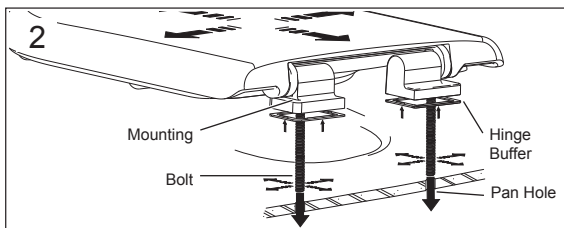


Soft-close Exposed Fixing Hinge

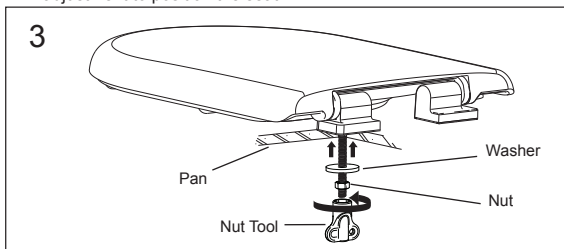
Installation Instructions



Push Hinge Posts **fully** into Mounting Holes in the seat (see Diagram A).



Ensure the Hinge Buffers are fitted to the underside of the Mountings. Lower seat onto pan, sliding bolts through pan holes, utilising the bolts X-Y adjustment to position the seat.



Check that the seat is correctly positioned on the pan. Slide Washer up to base of Pan and tighten Nut firmly using the Nut Tool.

Manufactured and Distributed for

GWAIL

ABN 15 055 964 380

GPO Box 1411, Brisbane 4001

Leaflet No. 813 507~C