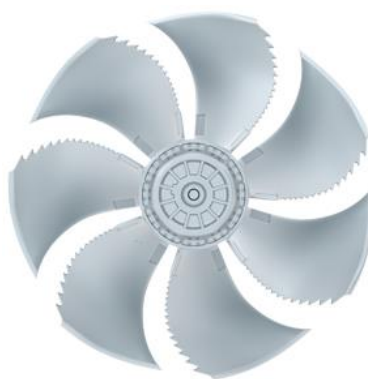


Movement by Perfection



The Royal League in ventilation, control and drive technology



### Product documentation

Type  
FN050-4EQ.4I.V7P1

Article number  
142503

## Product documentation

Customer  
Actrol

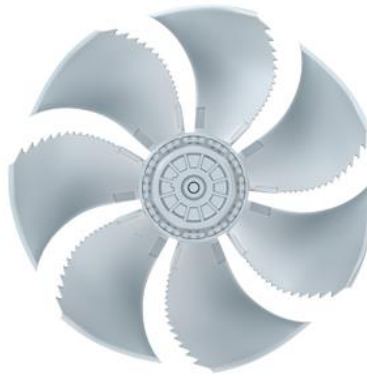
ZIEHL-ABEGG Contact  
Kenz Zacharias  
Tel. +61 2 8883 2854  
Email. [kenz.zacharias@ziehl-abegg.com.au](mailto:kenz.zacharias@ziehl-abegg.com.au)

Project  
Axial Fan

ZIEHL-ABEGG Subsidiary  
Australia  
ZIEHL-ABEGG Australia Pty Ltd (VIC)  
181 Calarco Drive  
Derrimut  
VICTORIA 3030  
AUSTRALIA  
Phone +61 3 99310899  
Fax +61 3 99310499  
[www.ziehl-abegg.com.au](http://www.ziehl-abegg.com.au)  
[info@ziehl-abegg.com.au](mailto:info@ziehl-abegg.com.au)

Type  
FN050-4EQ.4I.V7P1

Article number  
142503



### Contents

1.	Product specification	3
2.	Characteristic Curve	4
3.	Drawing	5
4.	Connection diagram	6

## 1. Product specification

### Technical data

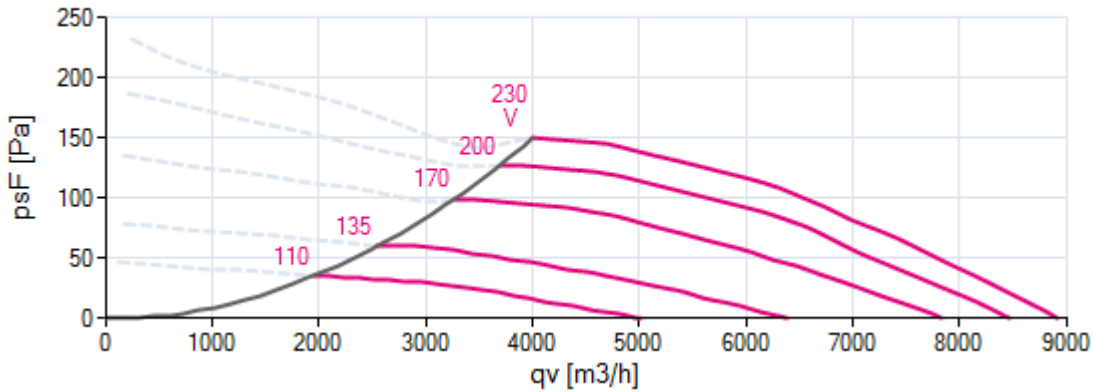
Article number	142503
Type	FN050-4EQ.4I.V7P1
Designation	Axial fan with sickle blades
Rated values	1~230V±10% 50Hz P <sub>1</sub> 760W 3.30A ΔI=5% 1230/min 16.0uF/400V 70°C 1~230V±10% 60Hz P <sub>1</sub> 1,05kW 4,60A ΔI=0% 1250/min 16,0uF/400V 50°C
Electrical connection	Terminal box K62
Min. operating temperature °C	-25***
Mounting type terminal box	Mounted on Stator
Type of protection	IP54
Thermal class	THCL155
Connection diagram	1360-104XA
Rating plate	1x fixed
Fitting position	H/Vu/Vo
Motor protection	thermal contact
Impregnation	Moisture and hot climate protection
Quality of bearings	ball bearing with long-time lubrication
Material Rotor	Aluminium
Painting rotor	Rotor 1 coat painted
colour rotor	RAL 9005 (jet black)
Material blades	Aluminium
Painting impeller	1 coat painted
Colour blades	RAL 9005 (jet black)
Guard grille type	ring grill
Control	--
Other	Balancing quality G 4,0
Painting housing	Bell mouth 1 coat paint
Colour housing	RAL 9005 (jet black)
Painting mot.suspens	Motor suspension 1 coat paint
colour suspension	RAL 9005 (jet black)
Weight kg	18,90
ErP Data	Efficiency $\eta_{\text{statA}}$ : 28,9 % Efficiency grade: $N_{\text{actual}} = 36,3 / N_{\text{target}} = 36^*$ *ErP 2013* Does not comply with the stipulations of the ErP regulations

\*\*\* Occasional operation  $\leq -20^{\circ}\text{C}$  and in consideration of lowest temperature according to product documentation permissible. For cooling applications with continuous operation  $\leq -20^{\circ}\text{C}$  cold design on request.

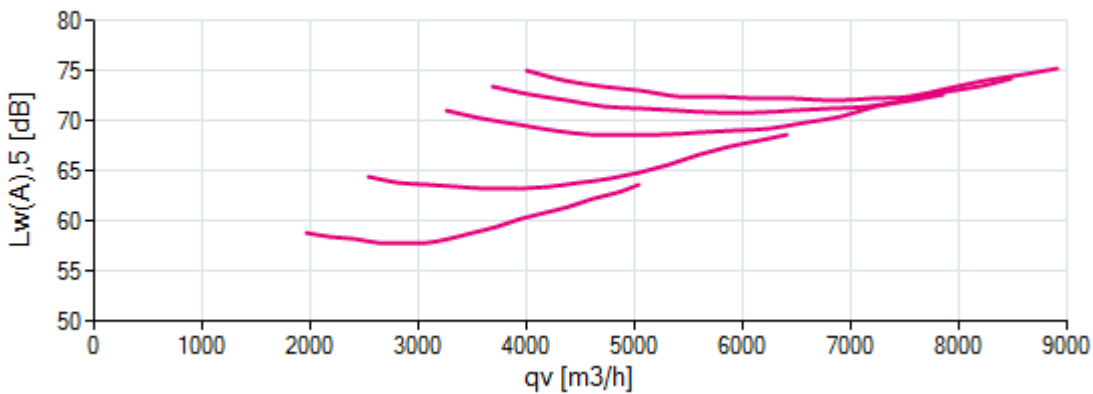
### 2. Characteristic Curve

FN050-4EQ.4I.V7P1 Gemessen in Volldüse ohne Berührungsgitter in Einbauart A nach ISO 5801  
1~ 230V 50Hz Messdichte 1,16

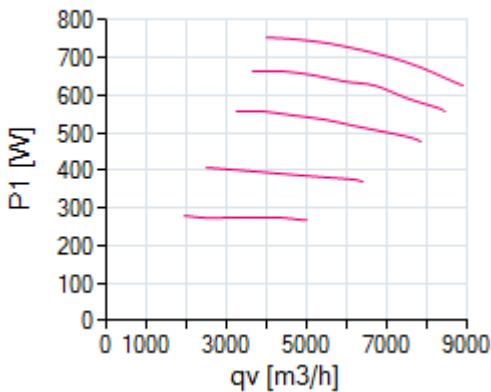
#### Air performance



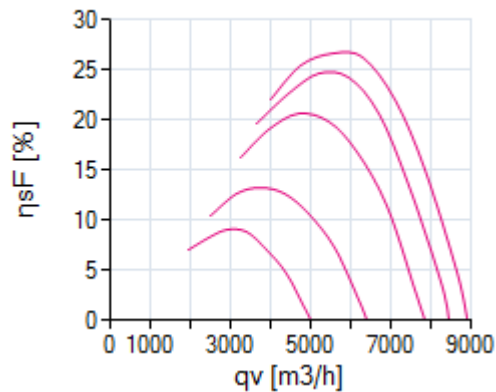
#### Acoustics



#### Power input



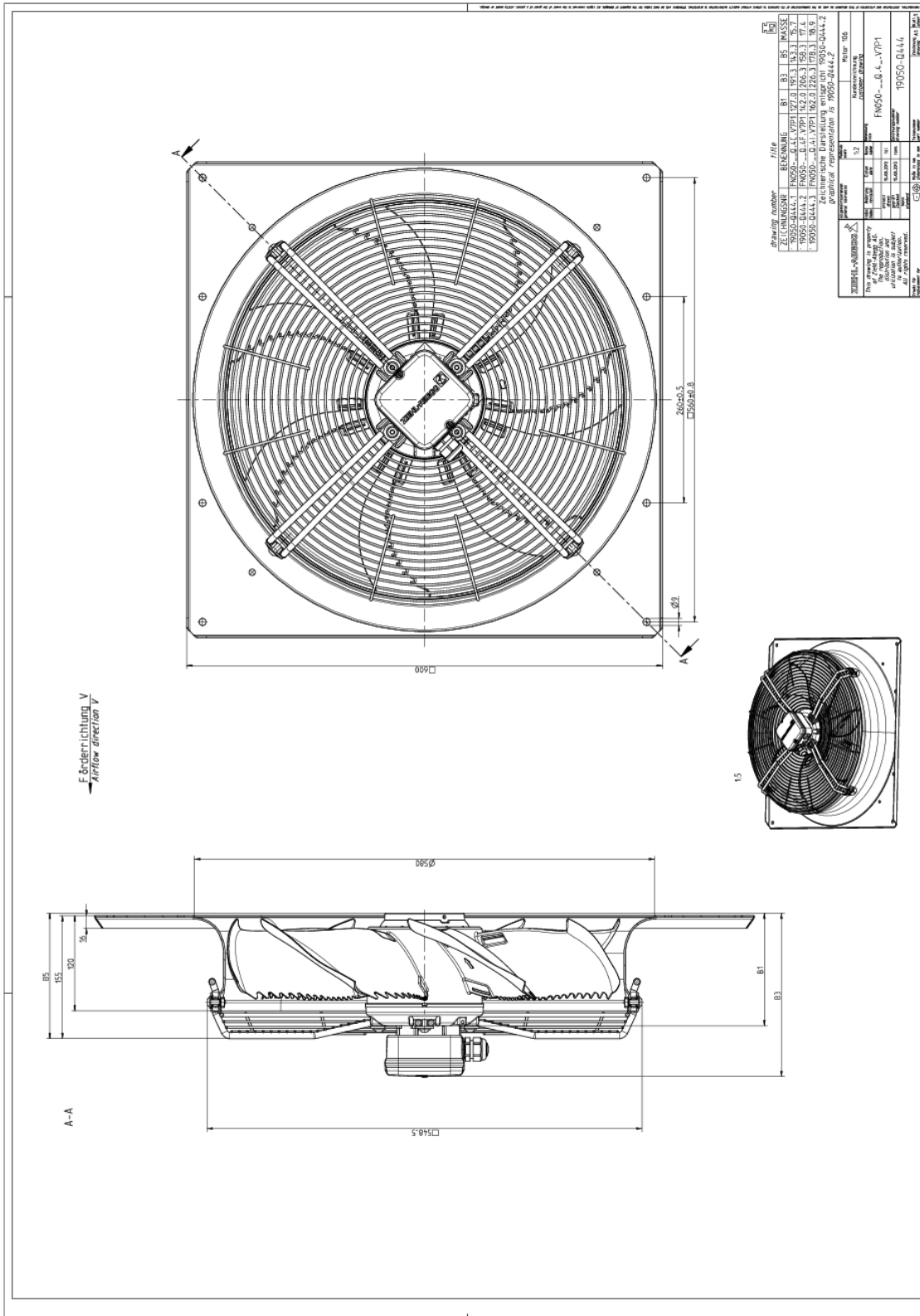
#### Efficiency



Please note: It's not allowed to use this fan in the stall area!\*

\*In doubt please ask your responsible ZIEHL-ABEGG sales contact.

### 3. Drawing



Dimensions in mm

Shown drawing is just to show the dimensions of the fan.

www.ziehl-abegg.com  
22/05/2019 12:26:09 PM

Movement by Perfection | Bewegung durch Perfektion

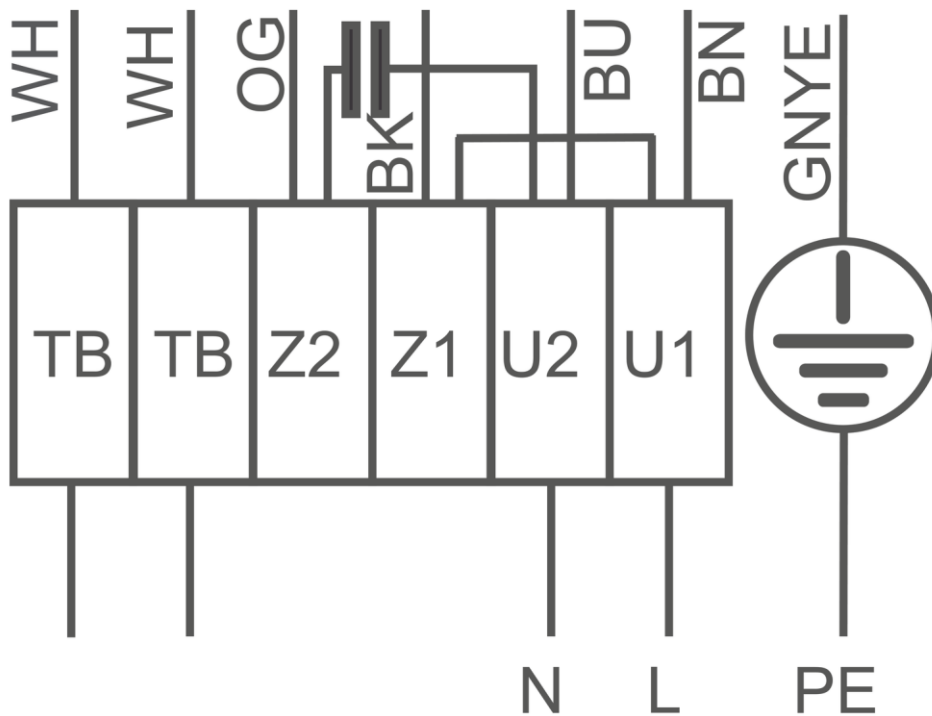
### 4. Connection diagram

1360-104XA

1~Motor with capacitor and thermostatic switch (if built in).

- BN brown
- BU blue
- BK black
- OG orange
- WH white
- GNYE green-yellow

Clockwise rotation



EU-Declaration of conformity



The Royal League in ventilation, control and drive technology

## Intelligent control technology for any application

### ZIEHL-ABEGG system capabilities:

Everything from a single source – perfectly matched for optimal performance

Please contact us. We would be pleased to design an individual solution for your requirements.

We would like to welcome you on our worldwide exhibitions. Please find our next exhibitions [here](#).