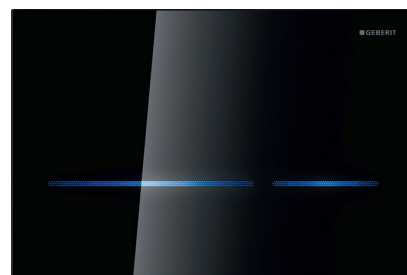
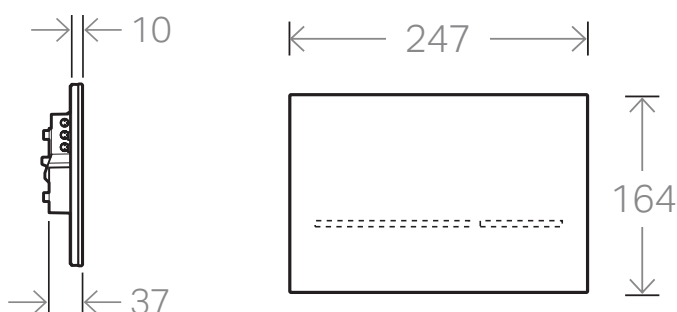


# ■ GEBERIT

## SIGMA80 ELECTRONIC BUTTON/ACCESS PLATE



9504022 Sigma80 Black

Sigma80 requires power supply installation set 9504026

### FEATURES & BENEFITS

<b>15 year warranty on flush plate</b>	Peace of mind
<b>Hands free operation</b>	Activated with the wave of a hand, no finger prints
<b>25 year spare parts availability guarantee</b>	Serviceable for the life of your bathroom
<b>Recommended use</b>	Domestic or Commercial
<b>Automatic stand by mode</b>	Minimises energy consumption
<b>A choice of five different colour settings for the button lights</b>	Suit individual bathroom layout and personal taste

### SPECIFICATIONS

<b>Operation</b>	Electronic, hands free
<b>Application</b>	Dual-flush access plate
<b>Colour range</b>	Black, Smoked Reflective
<b>Power supply</b>	Power installation set mandatory: 9504026
<b>Product material</b>	Glass
<b>Compatibility</b>	Sigma120 cistern
<b>Standby power</b>	1 watt

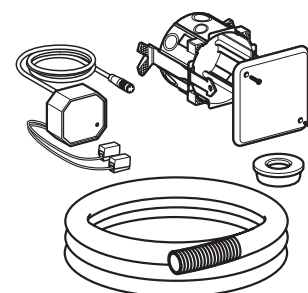
### COLOUR OPTIONS



Sigma80 Black Glass  
Sigma80 Reflective Glass



9504022  
9504023



9504026 Installation set



### CLEANING INSTRUCTIONS

You have selected a Geberit product with a high-grade surface. Please follow the cleaning instructions so that your Geberit product will give you many years of pleasure.

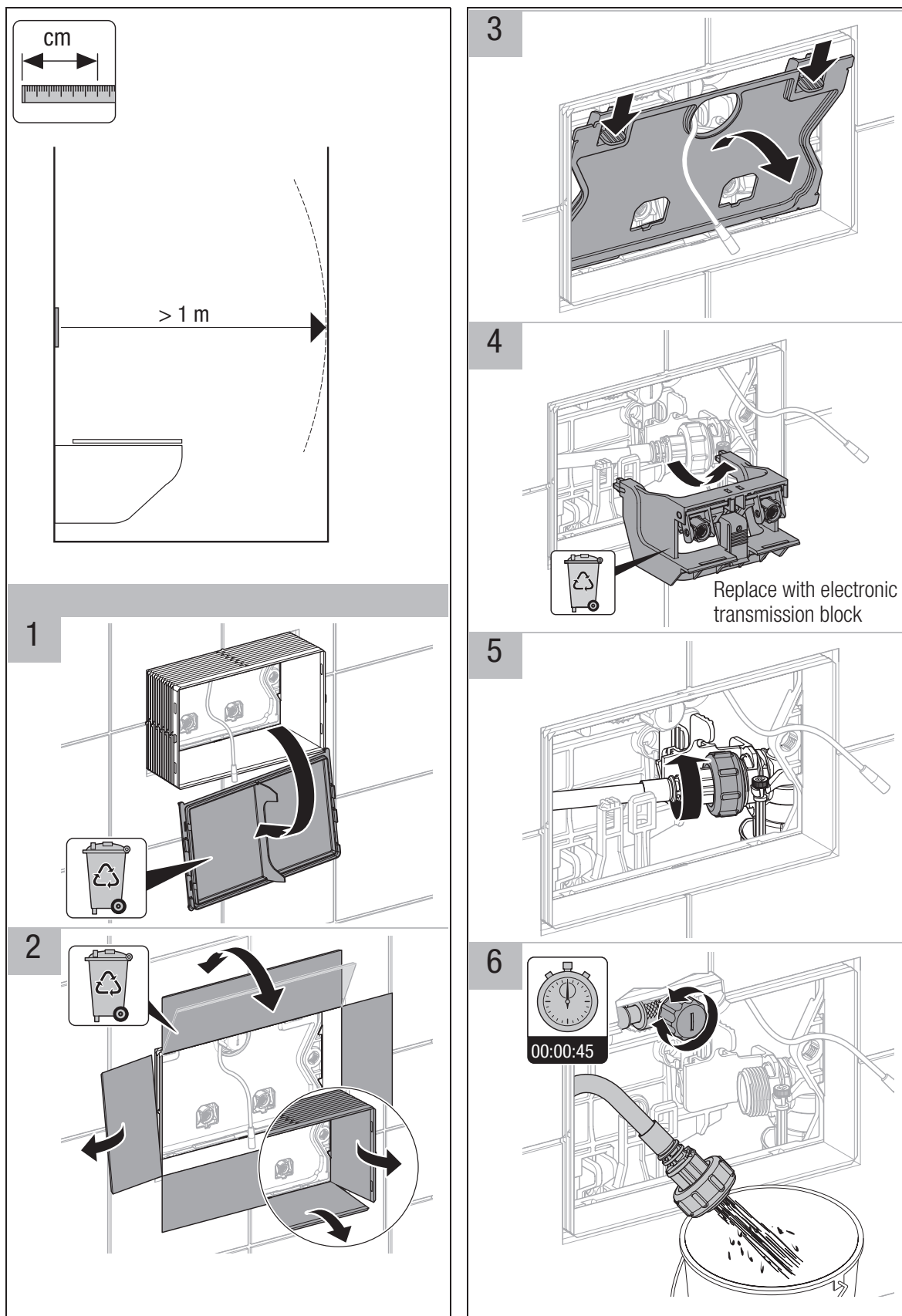
Never use aggressive cleaners that contain chlorine, are acidic, abrasive or corrosive. Only use water and a mild cleaning agent.

1. Clean the unit with a soft cloth soaked in water.
2. Dry with a soft cloth.

The unit warranty does not cover damage arising from improper treatment with cleaning agents.

# **■ GEBERIT** **SIGMA80 ELECTRONIC** **BUTTON/ACCESS PLATE**

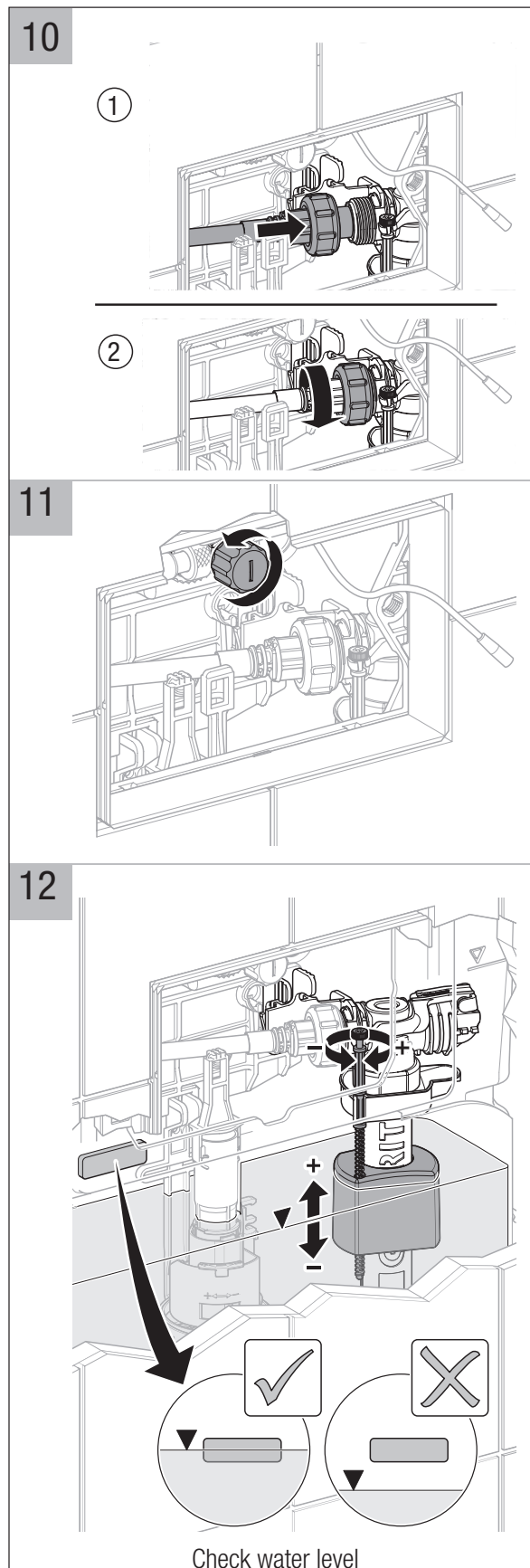
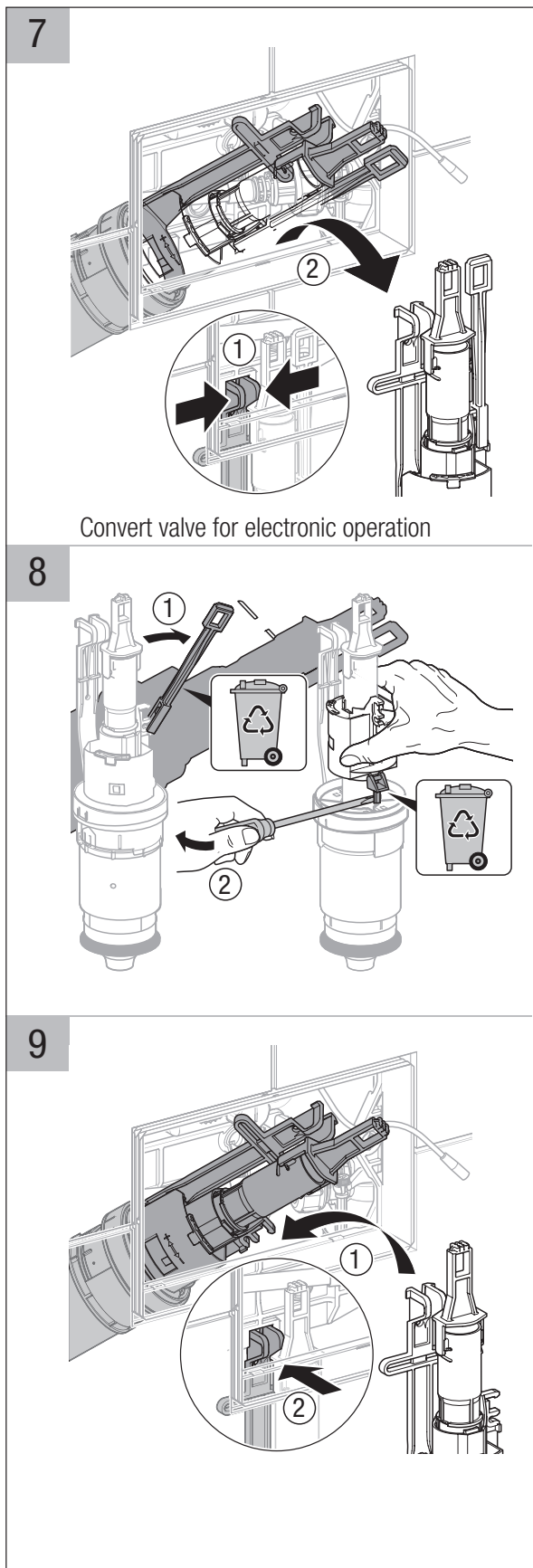
## **INSTALLATION INSTRUCTIONS**



Plumbers, please ensure a copy of the installation instructions is left with the end user for future reference

# **■ GEBERIT** **SIGMA80 ELECTRONIC** **BUTTON/ACCESS PLATE**

## **INSTALLATION INSTRUCTIONS**

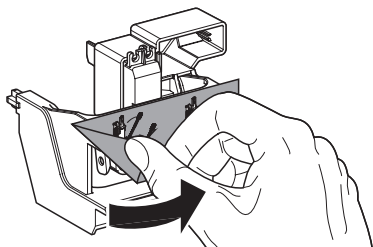


Plumbers, please ensure a copy of the installation instructions is left with the end user for future reference

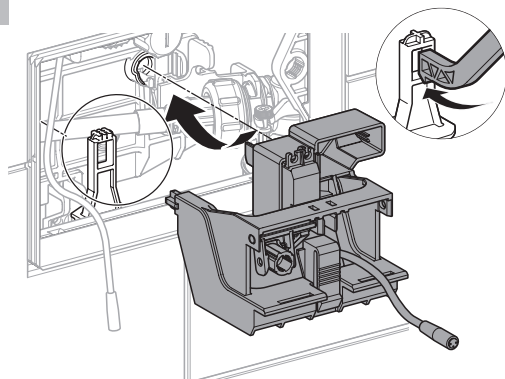
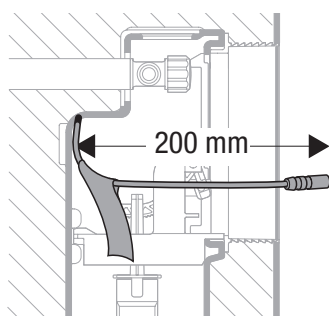
# **■ GEBERIT** **SIGMA80 ELECTRONIC** **BUTTON/ACCESS PLATE**

## **INSTALLATION INSTRUCTIONS**

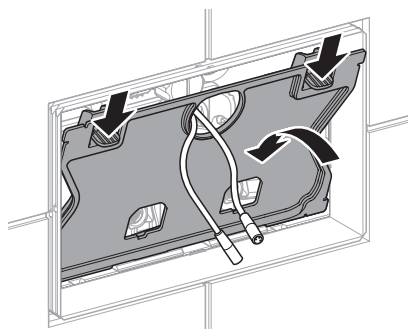
13



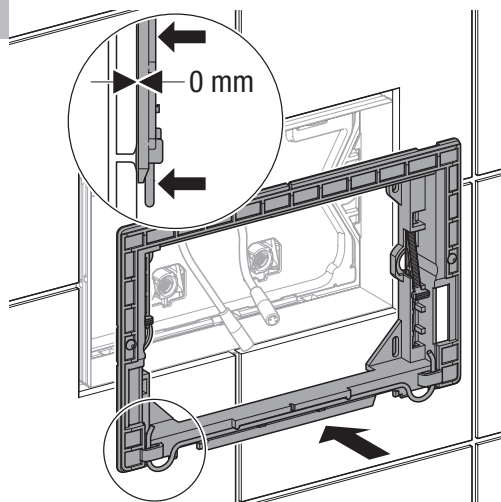
14


**i**


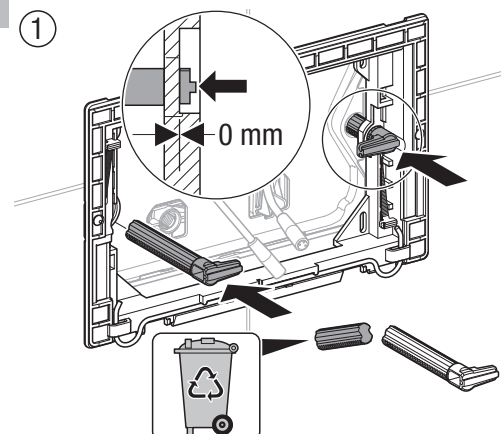
15



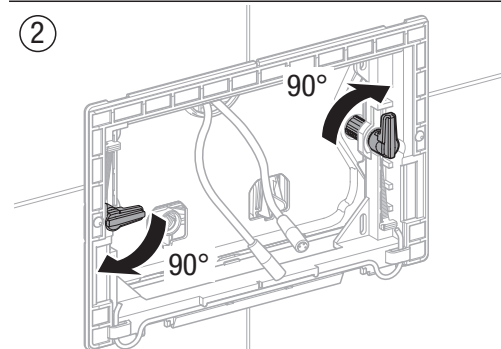
16



17

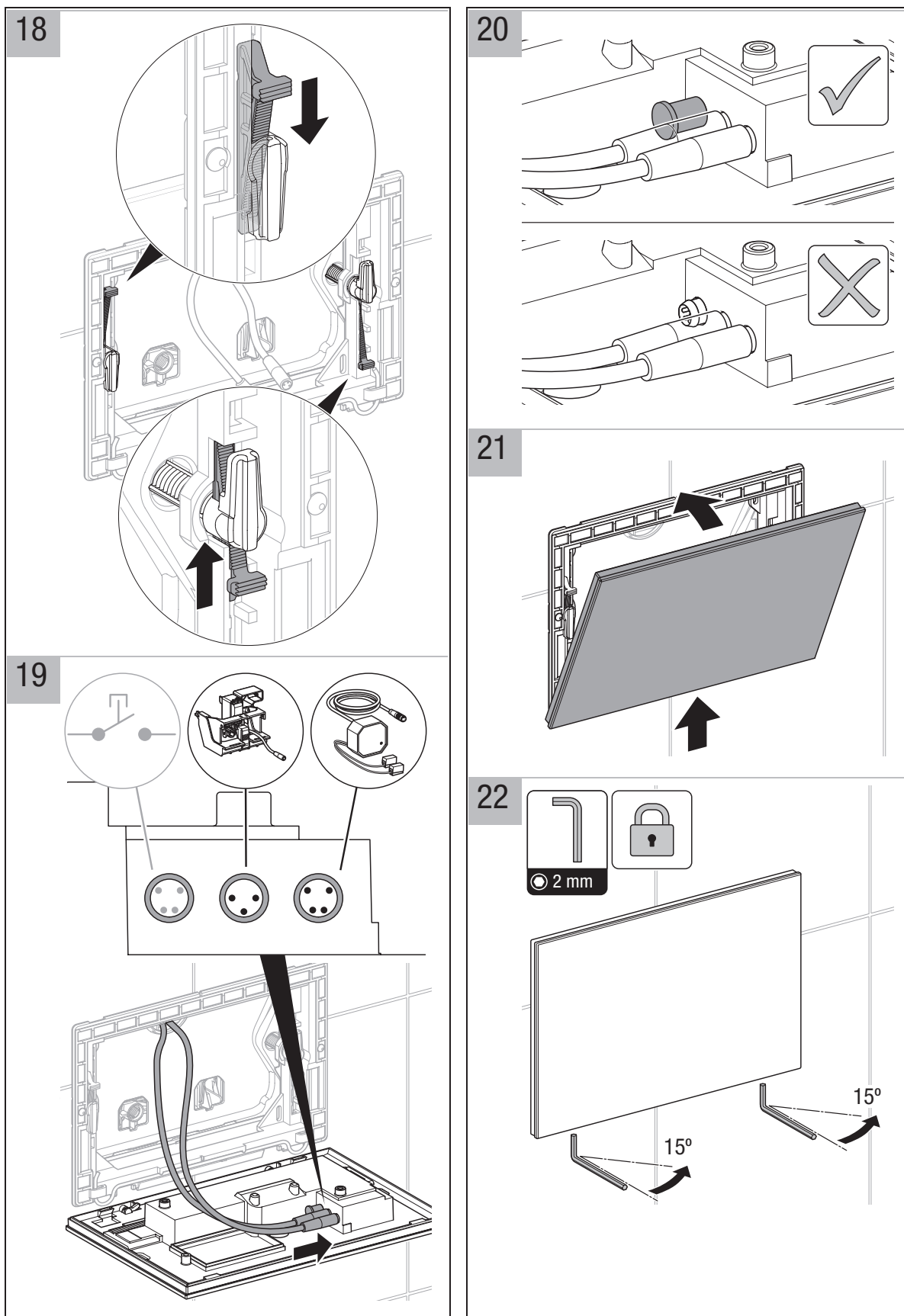


②



# **■ GEBERIT** **SIGMA80 ELECTRONIC** **BUTTON/ACCESS PLATE**

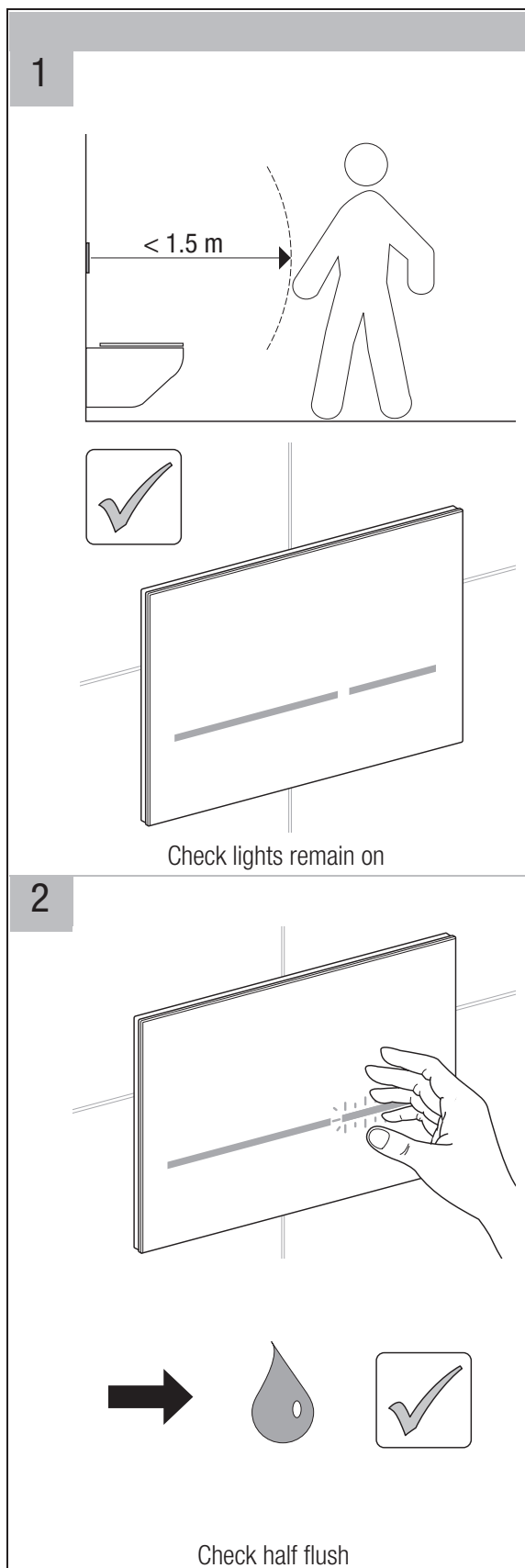
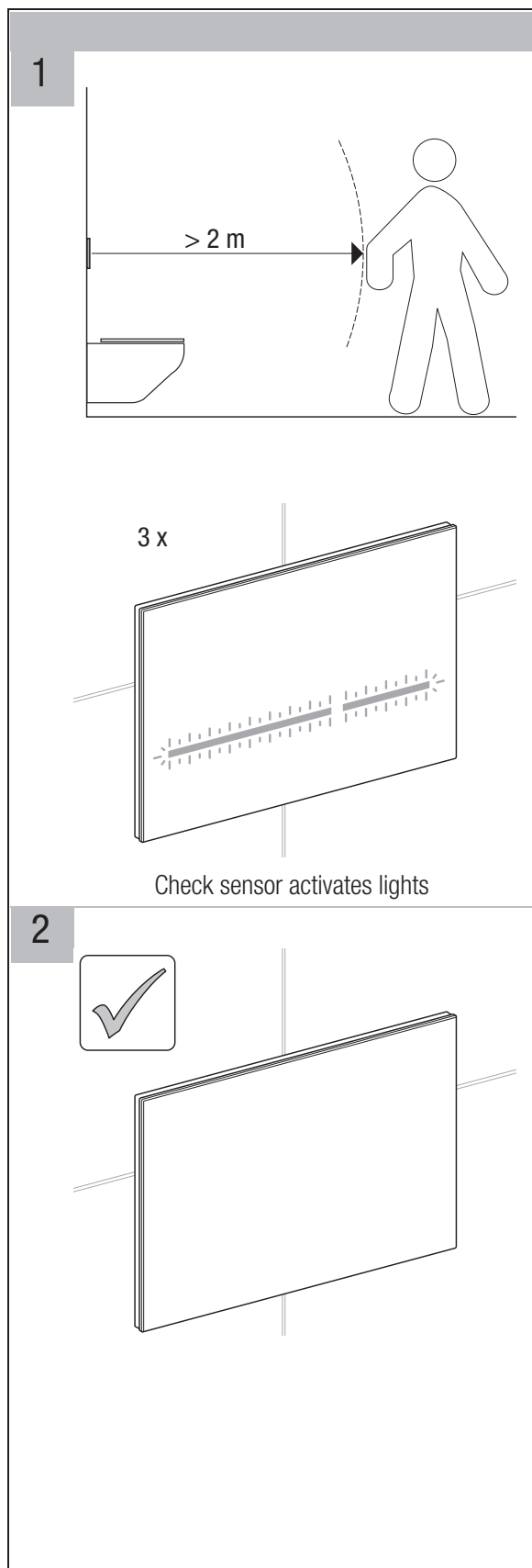
## **INSTALLATION INSTRUCTIONS**



Plumbers, please ensure a copy of the installation instructions is left with the end user for future reference

# **■ GEBERIT** **SIGMA80 ELECTRONIC** **BUTTON/ACCESS PLATE**

## **INSTALLATION INSTRUCTIONS**

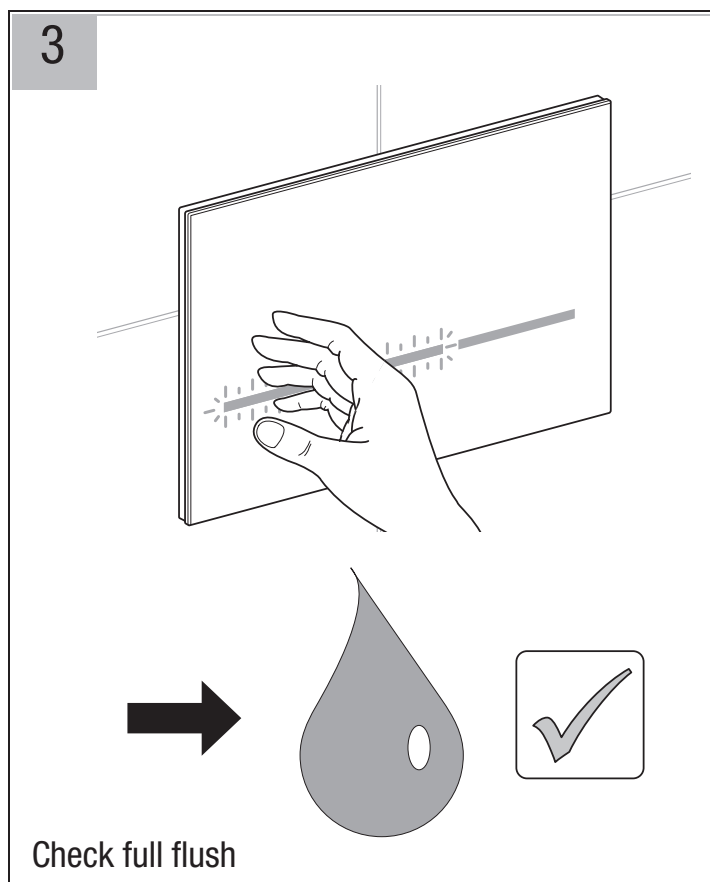


Plumbers, please ensure a copy of the installation instructions is left with the end user for future reference

# **■ GEBERIT**

## **SIGMA80 ELECTRONIC BUTTON/ACCESS PLATE**

### **INSTALLATION INSTRUCTIONS**



**■ GEBERIT**  
**SIGMA80 ELECTRONIC**  
**BUTTON/ACCESS PLATE**

**INSTALLATION INSTRUCTIONS**

## EN

Intended use:

The installation set with mains transformer is intended to provide a power supply for Geberit WC flush controls.

This product may only be mounted by qualified persons in accordance with EN IEC 62079:2001.



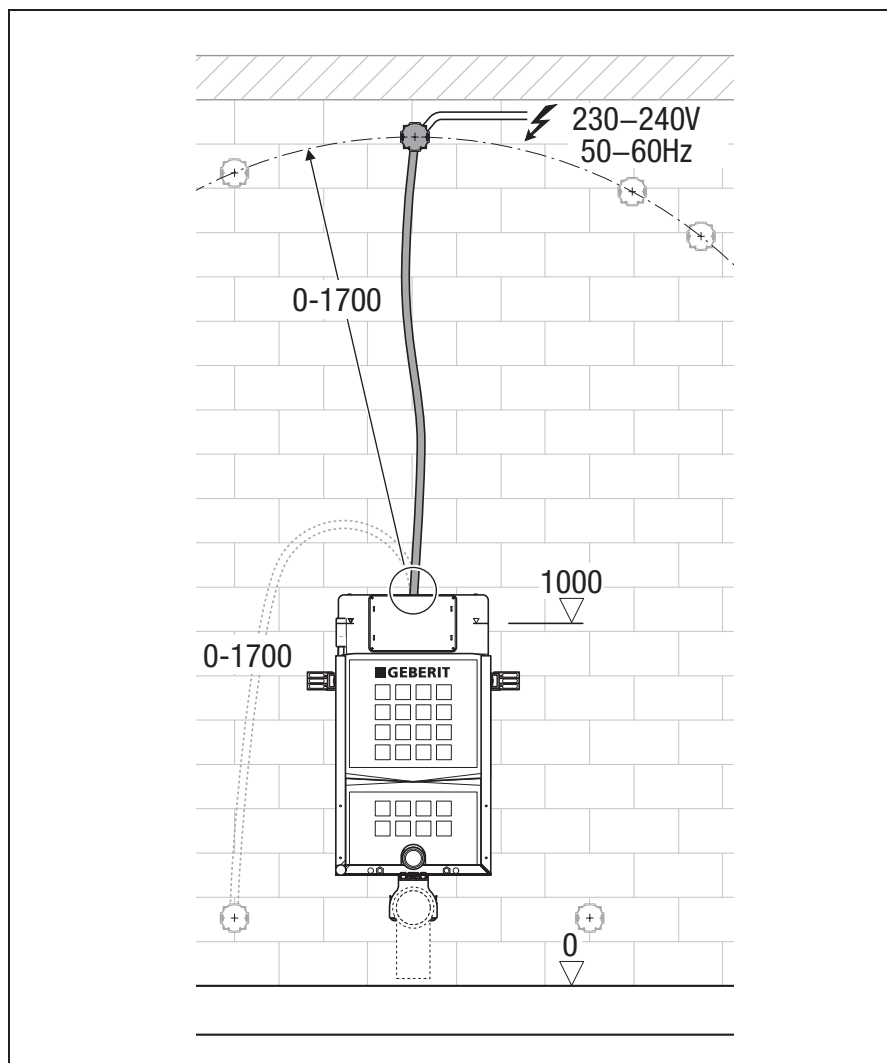
Connect the all-pole power switch in series with at least 3 mm contact opening.



# ■ GEBERIT

## SIGMA80 ELECTRONIC BUTTON/ACCESS PLATE

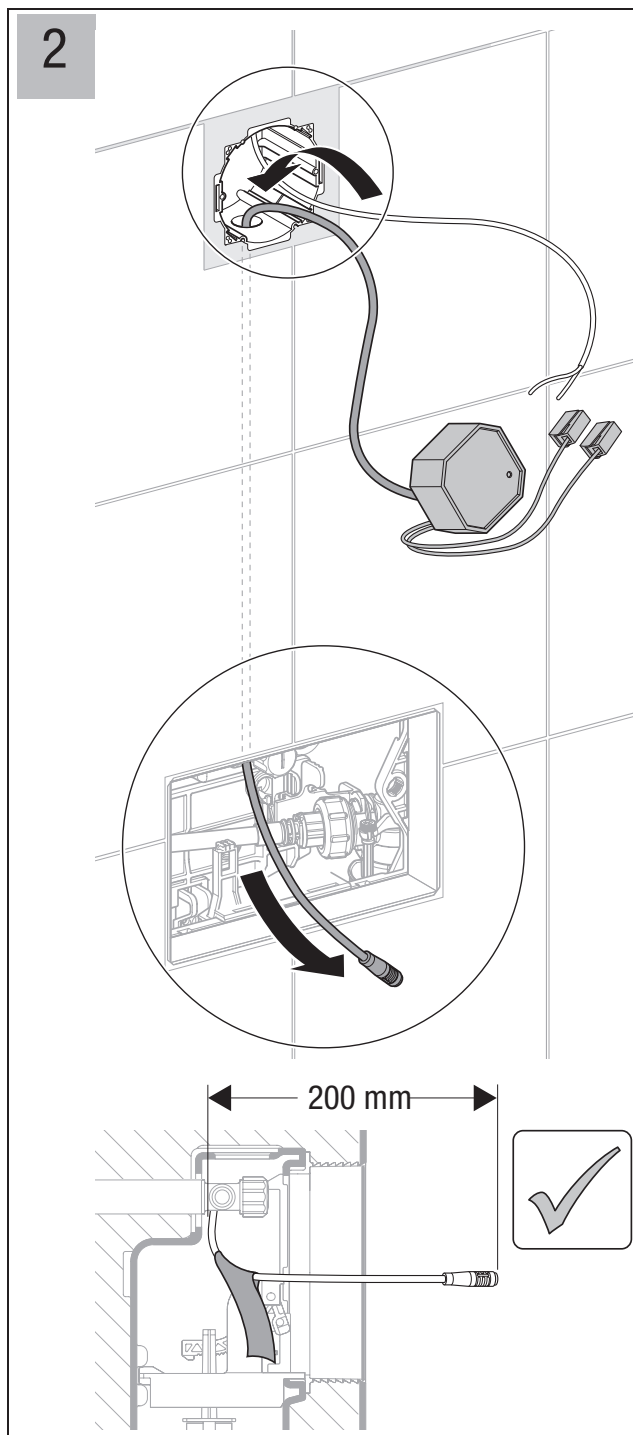
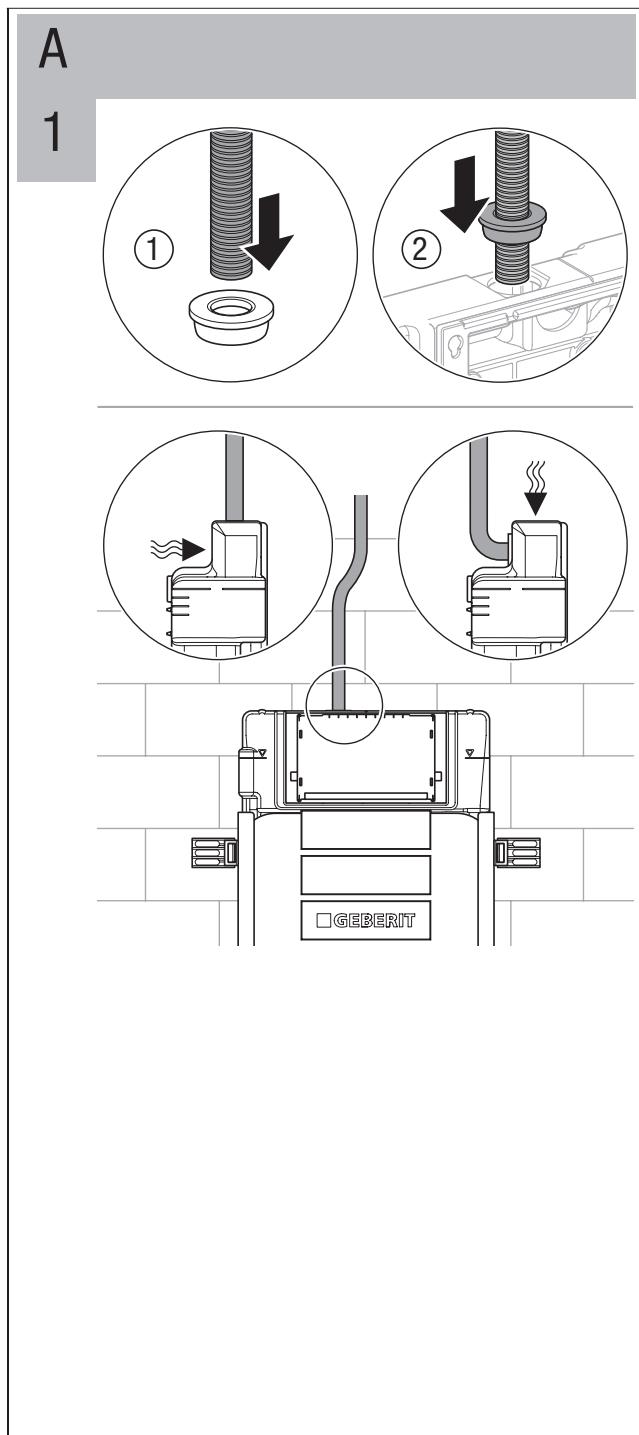
### INSTALLATION INSTRUCTIONS



**■ GEBERIT**

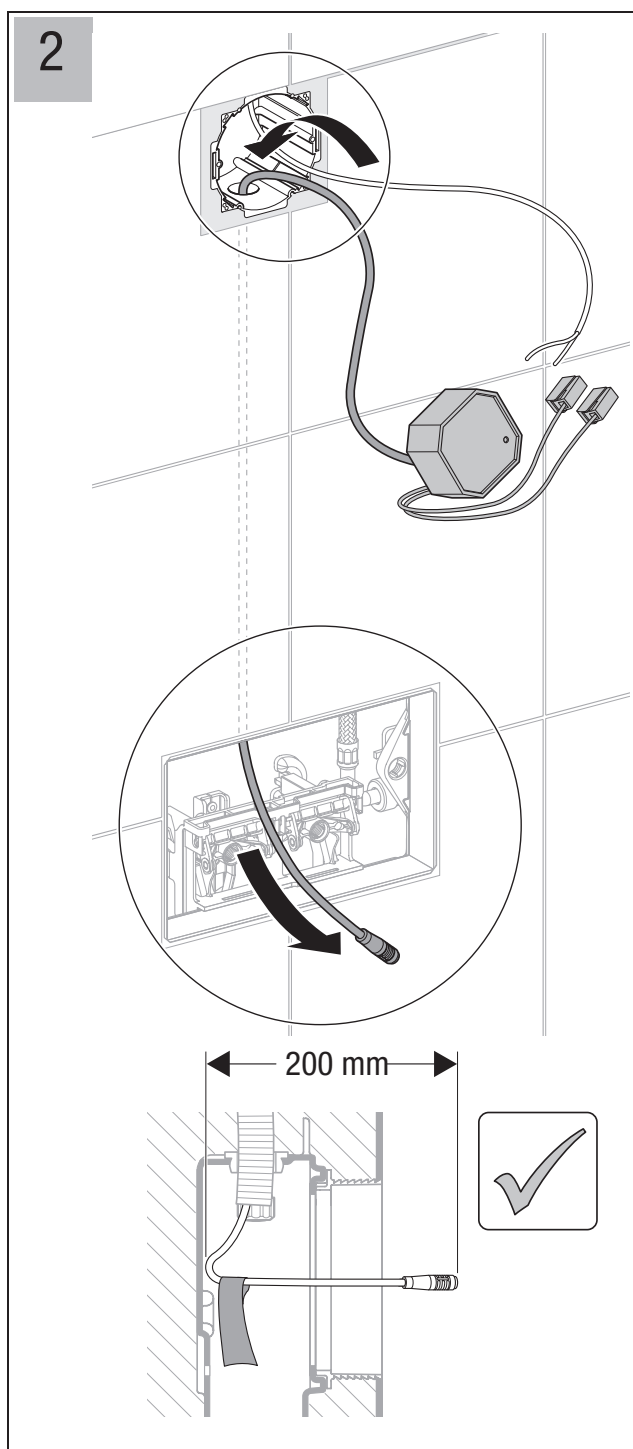
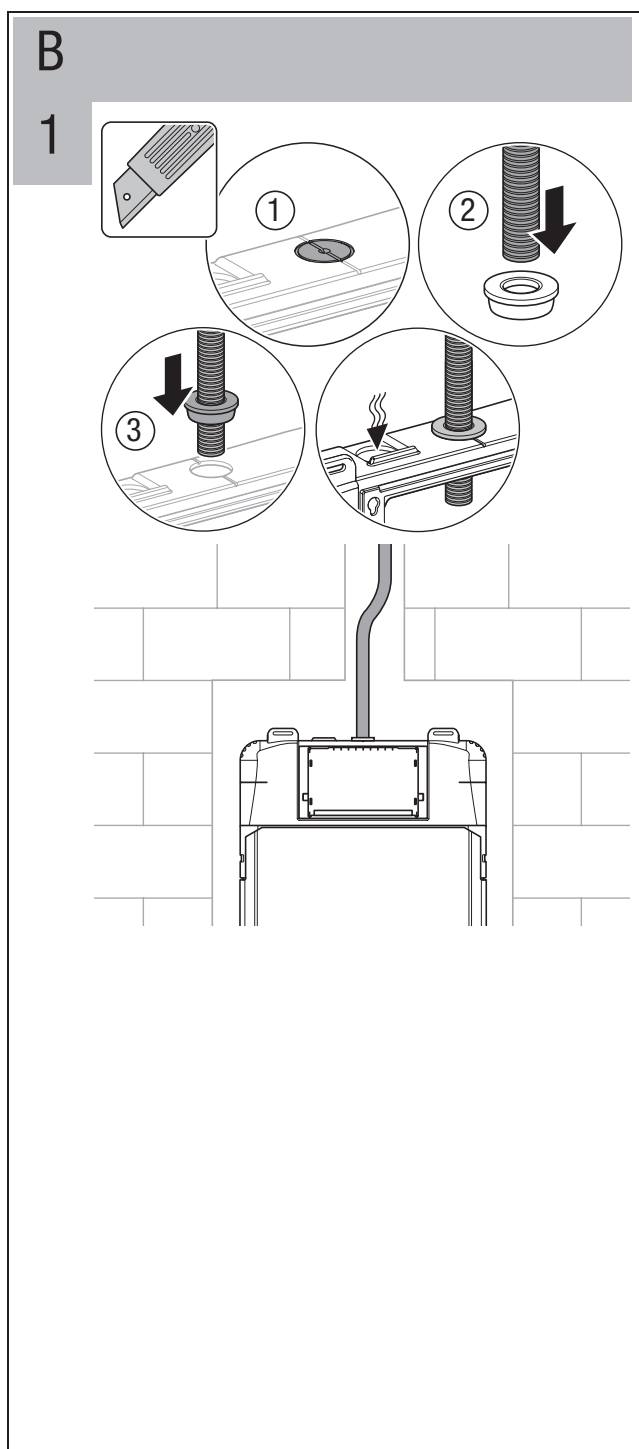
# **■ GEBERIT** **SIGMA80 ELECTRONIC** **BUTTON/ACCESS PLATE**

## **INSTALLATION INSTRUCTIONS**



# **■ GEBERIT** **SIGMA80 ELECTRONIC** **BUTTON/ACCESS PLATE**

## **INSTALLATION INSTRUCTIONS**

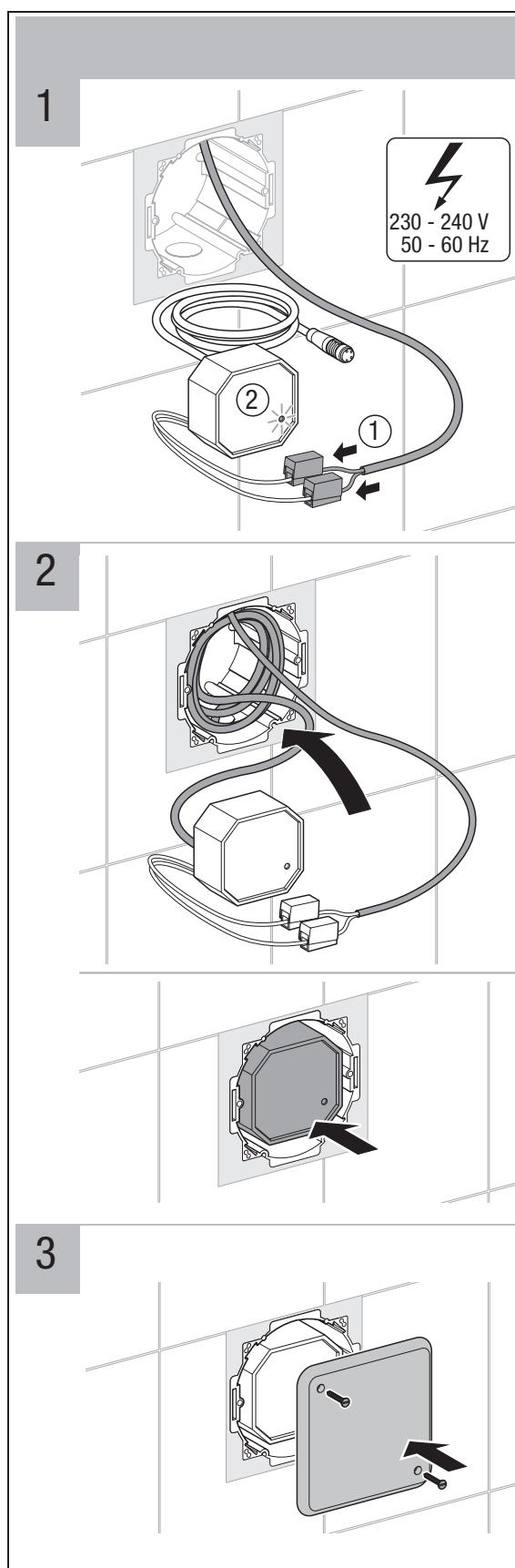


Plumbers, please ensure a copy of the installation instructions is left with the end user for future reference

# ■ GEBERIT

## SIGMA80 ELECTRONIC BUTTON/ACCESS PLATE

### INSTALLATION INSTRUCTIONS

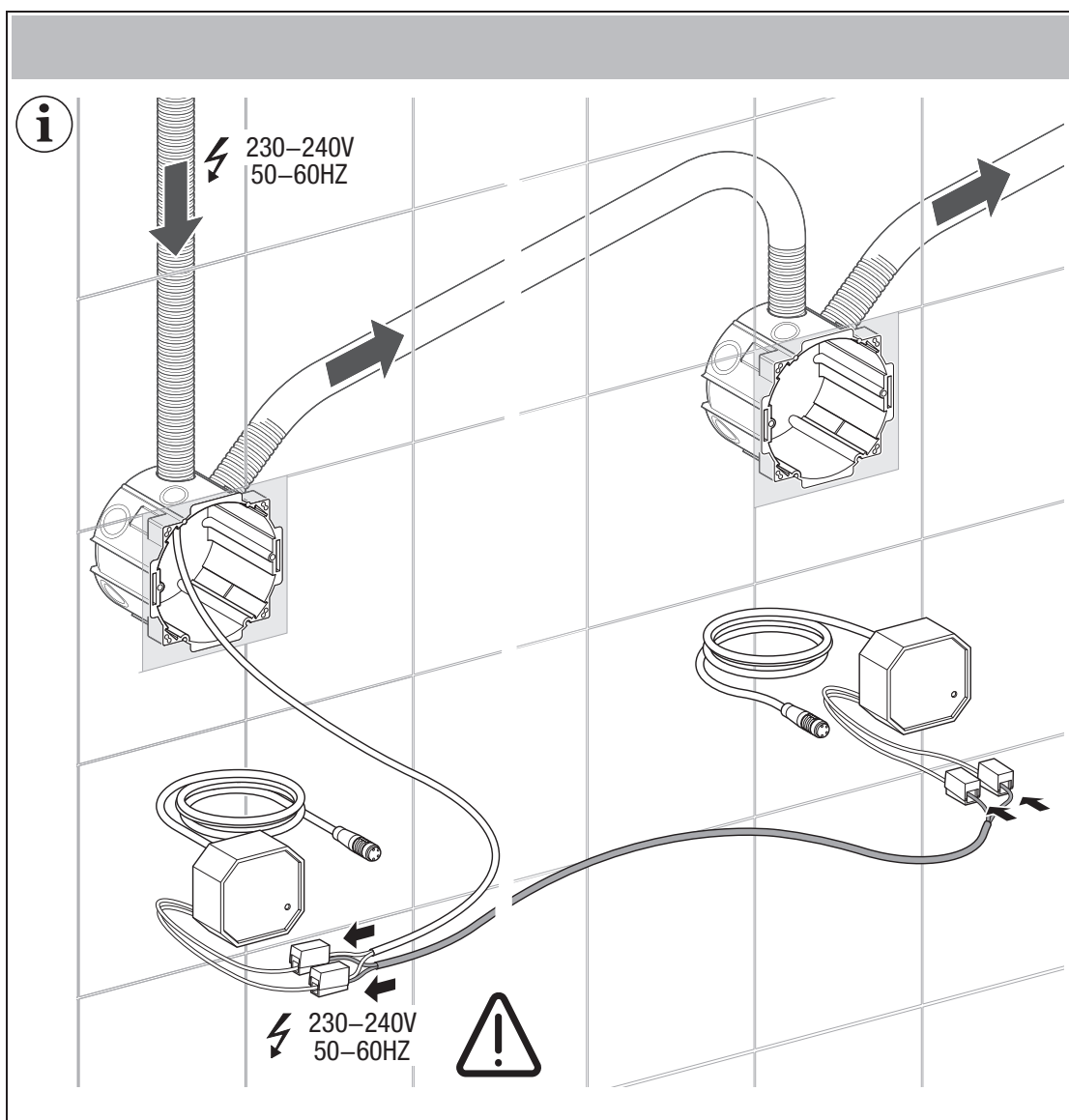


Plumbers, please ensure a copy of the installation instructions is left with the end user for future reference

# ■ GEBERIT

## SIGMA80 ELECTRONIC BUTTON/ACCESS PLATE

### INSTALLATION INSTRUCTIONS



Plumbers, please ensure a copy of the installation instructions is left with the end user for future reference

# ■ GEBERIT

## SIGMA80 ELECTRONIC BUTTON/ACCESS PLATE

### REECE PRODUCT QUALITY GUARANTEE

You have purchased a quality product from Reece Pty Ltd ABN 84 004 097 090 ("Reece"). This product is covered by a 15 year product warranty on the tank and push plate and a 3 year warranty on internal components including valves, electronic and pneumatic parts.

#### 15 YEAR WARRANTY – DOMESTIC USE

This warranty covers faults in the product construction, material and assembly. Products which are within 15 years from the date of purchase, found upon inspection by an authorised Reece representative, to be defective in construction, material or assembly, will be repaired or exchanged with an equivalent product free of charge. Replaced items become Reece's property.

All replacement products will be available for collection without charge to the customer at the nearest Reece branch to the customer's location, or elsewhere as agreed between the customer and Reece.

#### LABOUR

The labour for the replacement of products to which this warranty applies will be supplied by Reece or relevant supplier using licensed plumbers engaged by Reece or relevant supplier within 1 year from the date of purchase.

Spare parts which are within 1 year from the date of purchase found upon inspection by an authorised Reece representative to be defective in construction, material or assembly, will be replaced free of charge.

#### WARRANTY CONDITIONS

This warranty will apply only under all of the following conditions:

- The item has been installed by a licensed plumber
- The item has been installed for and subjected to domestic residential use only
- Failure is due to a fault in the manufacture of the product
- Proof of purchase (including the date of purchase) is provided
- The installation of the product is in accordance with the instructions provided

This warranty does not cover products purchased as an ex-display without being fully checked and tested for sale by the manufacturer.

This warranty does not include faults caused by:

- Unsuitable or improper use
- Incorrect installation or installation not in accordance with the instructions provided

- Installation or part installation by the purchaser or any person other than a LICENSED PLUMBER
- Normal wear and tear
- Inadequate or complete lack of maintenance
- Chemical, electrochemical or electrical influences
- Harsh detergents or abrasive cleaners used on product finishes

#### 1 YEAR WARRANTY – COMMERCIAL USE

'Commercial' use is all use other than for normal domestic residential purposes, including use in non-business places as in public buildings, schools, sports centres and in establishments that contain private bathrooms with high frequency of use by many individuals, such as hotels, motels, retirement villages and hospitals.

The Commercial warranty covers this product against manufacturing faults in the construction, material and assembly of both the finished products and any spare parts for a period of 1 year from the date of purchase. Products and spare parts which are found upon inspection by an authorised Reece representative to be defective in construction, material or assembly will be repaired or exchanged free of charge.

Replaced items become Reece's property. The labour for the replacement of products and spare parts to which this warranty applies will be supplied by Reece or relevant supplier using licensed plumbers engaged by Reece or relevant supplier.

The Warranty Conditions and exclusions which apply to the domestic use warranty also apply to this commercial warranty.

#### EXCLUSIONS

To the fullest extent permitted by law, Reece excludes all liability for damage or injury to any person, damage to any property, and any indirect consequential or other loss or damage.

#### CLAIM PROCEDURE

For all warranty queries customers are to contact the branch where the product was purchased. These details can be found on your purchase invoice. Our goods come with guarantees that cannot be excluded under the Australian Consumer Law. You are entitled to a replacement or refund for a major failure and for compensation for any other reasonably foreseeable loss or damage. You are also entitled to have the goods repaired or replaced if the goods fail to be of acceptable quality and the failure does not amount to a major failure.

### GEBERIT COMPATABILITY GUIDE

COMPATABILITY	MECHANICAL	PNEUMATIC	ELECTRONIC
CISTERN	Sigma75 Sigma120 Under Counter 150	Sigma75 Pneumatic Sigma120 Under Counter 150	Sigma120
BUTTON	